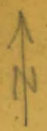
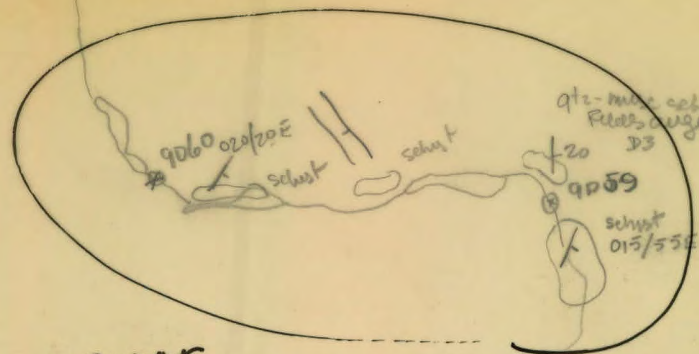


105-G-11

10411

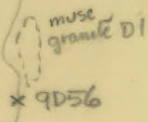
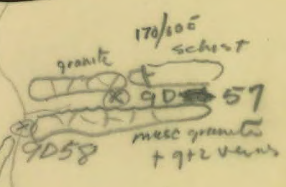


9061



error

actual route



A 12371-103

014053





FINLAYSON REGION

MINK CREEK.

MINK CR.

*Plotted
crosses*

MINK



NOTE
MUST SORT
RK TYPES
+ MINER...

SCALE: 1" = 1 MI.
JULY 20, 1969
MAD-105 G/11
RAY WELLS

FINLAYSON LAKE REGION

July 17, 1969



Ray wells.

Photo A12231-109

Pick-up 4:30

Come in with Werner.

105 $\frac{G}{H}$

MINK CREEK
'FINLAYSON REGION'

JULY 19, 1969

Plotted
Cards



MINK
CREEK

GREEN-WHITE
STAIN ON
LAKES

9J-302

9J-300

9J-299

9J-301

9J-298

15', .7' CLEAR
MOD., AVERAGE
GRAVEL

9J-297

9J-296

9J-295

9J-294

SWAMP AREA

HUMUS
(TS167)

2', 1/2' CLEAR, MOD, LOW

9J-293

9J-292

9J-291

LOWLAND
CREEK
POORLY
DEFINED

NOTE:-

- RK TYPES (FLDAT ONLY PRESENT)
COINCIDE WITH 'GSC'
INTERPRETATION OF SURROUNDING
HIGHLAND.

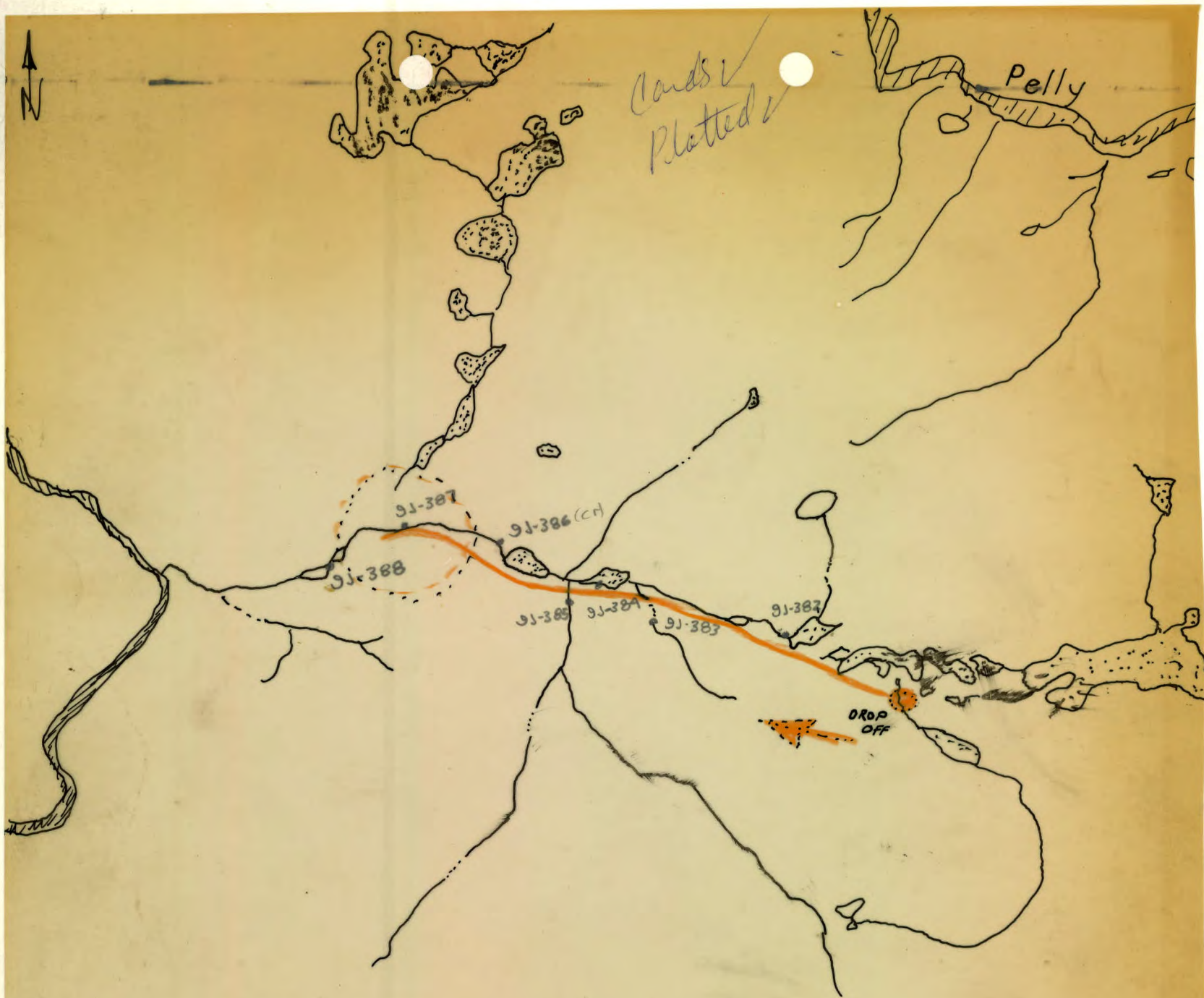
JUR +/- OR CRET.

- MED. TO COARSE
BIO. GRAN. DIO
QRTZ MON (PORPHY...)
MINOR (DIO., GRAN, GNEISS)

RAY WELLS

SCALE: 1" = 1 MI

MAP: 105 G/11



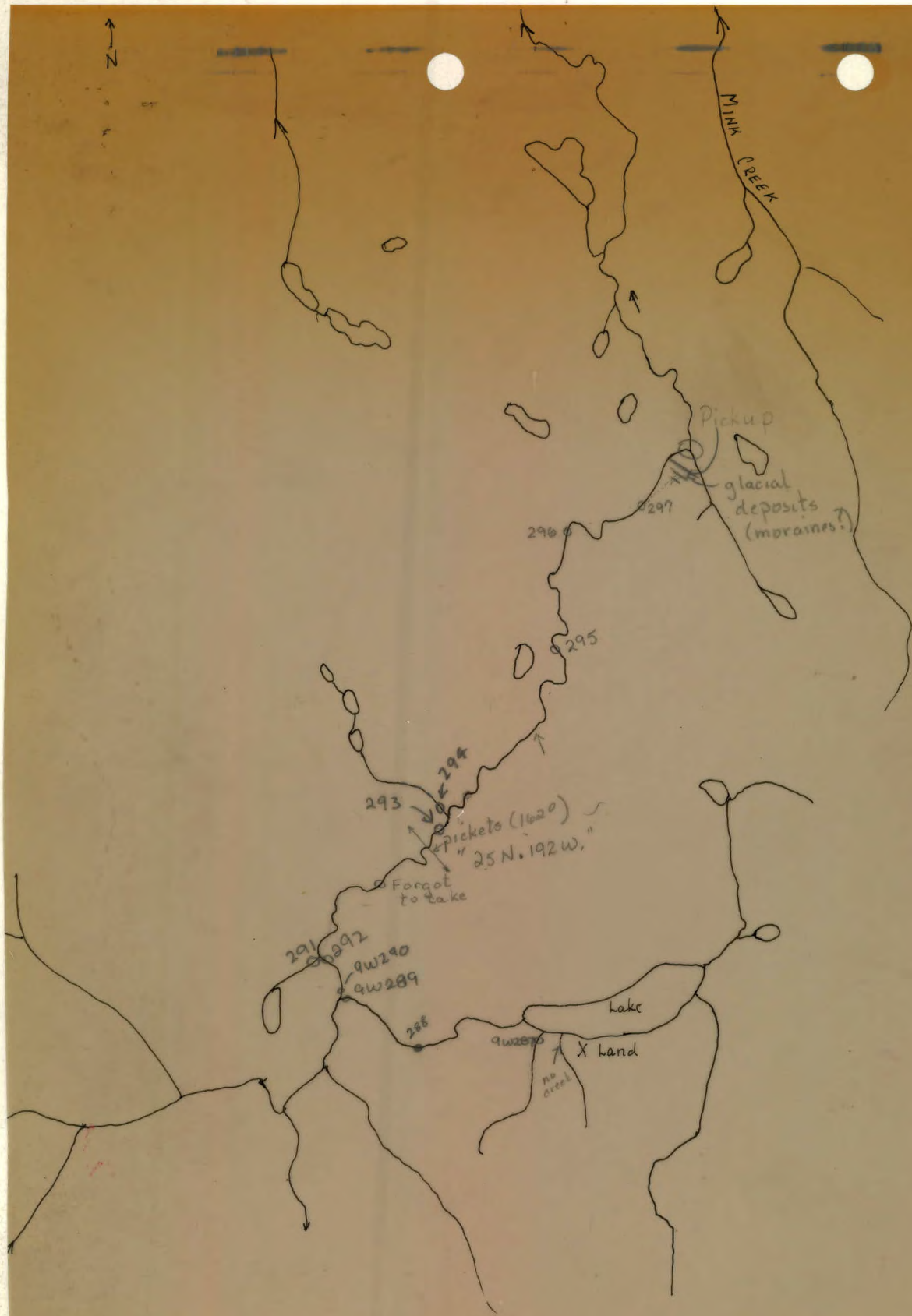
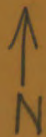
Finlayson Region

JULY 25, 1969

SCALE: 1" = 1 MI

MAP: MINKO + STARR OR
105 G 11 + G 12
R. WELLS

W. Greenwood
July 20/69
A-12326-285-83
1056/11



1" = 1 mi
1056/11
(Mink Creek)