

Green Hill

J. Hundere Traverses
Phil Group and
Region

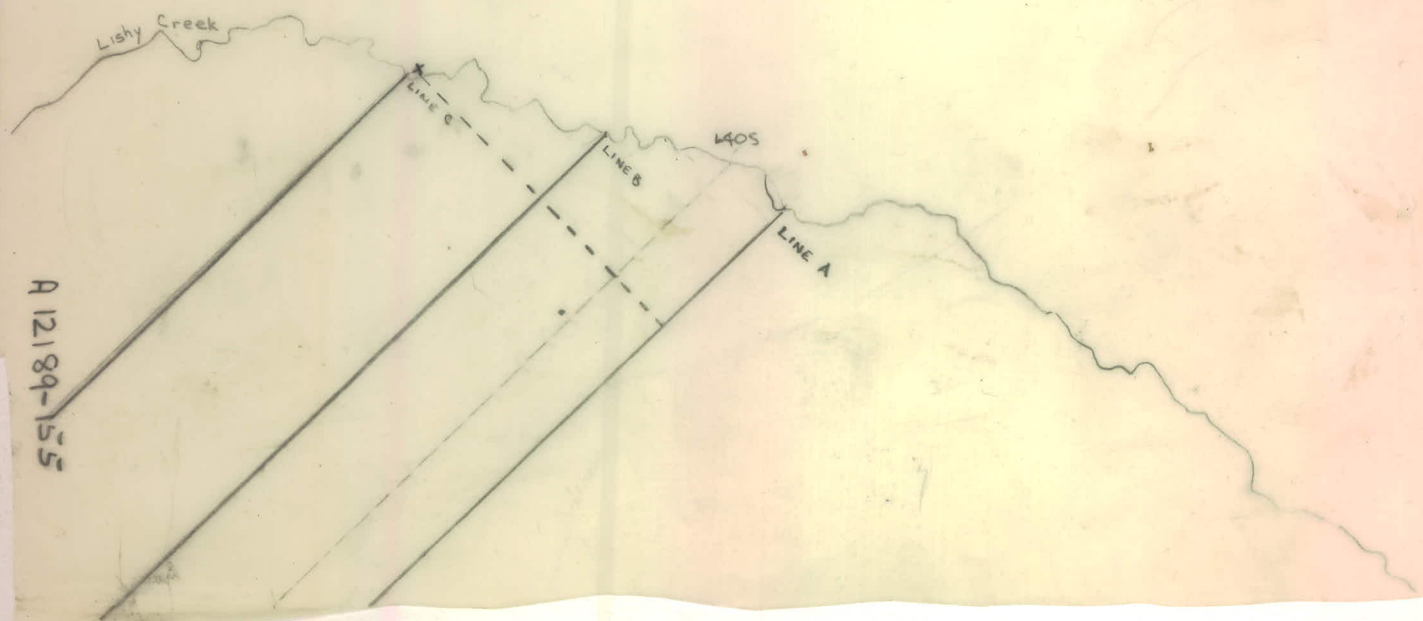
May 17-June 16, 1968



A12189-155

014124

Regional Geochem Lines
South of Lishy Creek
June, 1968



A 12189-155

Notes on Area approx. 10 miles South West of Fortin Lake

(The Camp that Burned)

June 19 - June 21, 1968

Air Photo Overlays

Plot of: { Silt Sample } Locations
 { Soil Sample }
 { Rock Sample }

KIRKLAND

105 6 15