

Plotted 23/July/66

BCC

BONDAR-CLEGG & COMPANY LTD.

geologists • geochemists • analysts

**ANALYTICAL WORK SHEET
GEOCHEMICAL**

014249

Report Number R-5-66 Weight of Sample 0.500
 From Canol Road Reconnaissance O.E.X Extraction Hot Aqua Regia
 Tested For Cu-Pb-Zn Volume Used AA unit
 Date Rec'd 24 May 66 Analyst [Signature]
dated 4/6/66 Cu Pb Zn Ag Zn

SAMPLE NUMBER		Cu	PPM	Pb	PPM	Zn	PPM	Ag	PPM	Zn	PPM
OURS	YOURS										
1	B-5A	11%	22	49%	8		485				
2	A-3	15%	30	39%	6		200				
3	B-2	6	12	2	4		71700				71700
4	B-8	6	12	2	4		250				560
5	B-3(AA)	20	400	N.D	N.D		165				33
6	B-2A	10	20	6	12		364				74
7	chop between A-1 and A-2	25	500	14	8		374				
8	A-1	210	420	5	10		71700	✓			
9	A-4	20	40	5	10		1491	✓			
10	A-1	20	40	4	8		254				
11	B-3	10	20	6	12		150				
12	B-6	16	32	14	8		290				
13	B-3A	13	26	3	6		200				
14	B-41	8	16	N.D	N.D		104				
15	B-5	12	24	10	12		350				
16	A-0	22	44	3	6		232				
17	B-4	20	40	N.D	N.D		160				
18	B-7	N.D	N.D	N.D	N.D		340				
19	A-7	8	16	4	8		425				
20	A-10	10	20	N.D	N.D		186				
21	A-5	14	28	N.D	N.D		179				
22	A-0	2	4	4	8		240				
23	A-2	3	6	3	6		206				
24	X-4	8	16	3	6		240				
25	A-9	15	30	4	8		525				
26	A-8 SE	12	24	5	10		825				
27	A-3	14	28	4	8		612				
28	A-5	2	4	N.D	N.D		790				
29	X-6 E	N.D	N.D	3	6		340				

Platt July 2/66



BONDAR-CLEGG & COMPANY LTD.

geologists • geochemists • analysts

Samples arrived
21 May 1966

ANALYTICAL WORK SHEET
GEOCHEMICAL

Report Number R 2-66

Weight of Sample 0.5 gm

From Atlas Stream samples (cond)

Extraction HT HNO₃ - HCl

Tested For Cu, Pb, Zn, ~~As~~

Volume Used AA unit

Date 1/6/66

Analyst [Signature]

SAMPLE NUMBER		Cu	PPM	Pb	PPM	Zn	PPM	As	PPM	PPM	PPM
OURS	YOURS										
1	D-6	9%	48	6%	12		340				
2	D-7	8%	16	8%	16		350				
3	φ-7	3%	06	7	14		350				
4	φ-1	18%	36	2	4		390				
5	D-2	21%	42	4	8		220				
6	D-3	5%	10	8	16		170				
7	φ-2	13%	26	6	12		215				
8	φ-8	12%	24	2	4		190				
9	D-0	15%	30	2	4		180				
10	D-5	12%	24	7	14		350				
11	φ-4	16%	32	3	6		180				
12	φ-8	18%	36	1	2		390				
13	φ-13	21%	42	4	8		180				
14	φ-3	8%	16	5	10		140				
15	D-4	9%	18	2	4		215				
16	φ-5	16%	32	1	2		145				
17	φ-9	13%	26	5	10		130				
18	φ-12-E	11%	22	3	6		185				
19	D-8	23%	46	3	6		200				
20	φ-14	24%	48	N.D.	N.O.		180				
21	φ-6	7%	14	4	8		105				
22	D-1	9%	18	5	10		170				
23	φ-11	13%	26	2	4		160				

4

Plot 2

BCC

BONDAR-CLEGG & COMPANY LTD.

geologists • geochemists • analysts

ANALYTICAL WORK SHEET
GEOCHEMICAL

Report Number R-4-66

Weight of Sample 0.200

From Carol Road Reconnaissance

Extraction Hot HNO₃-HCl

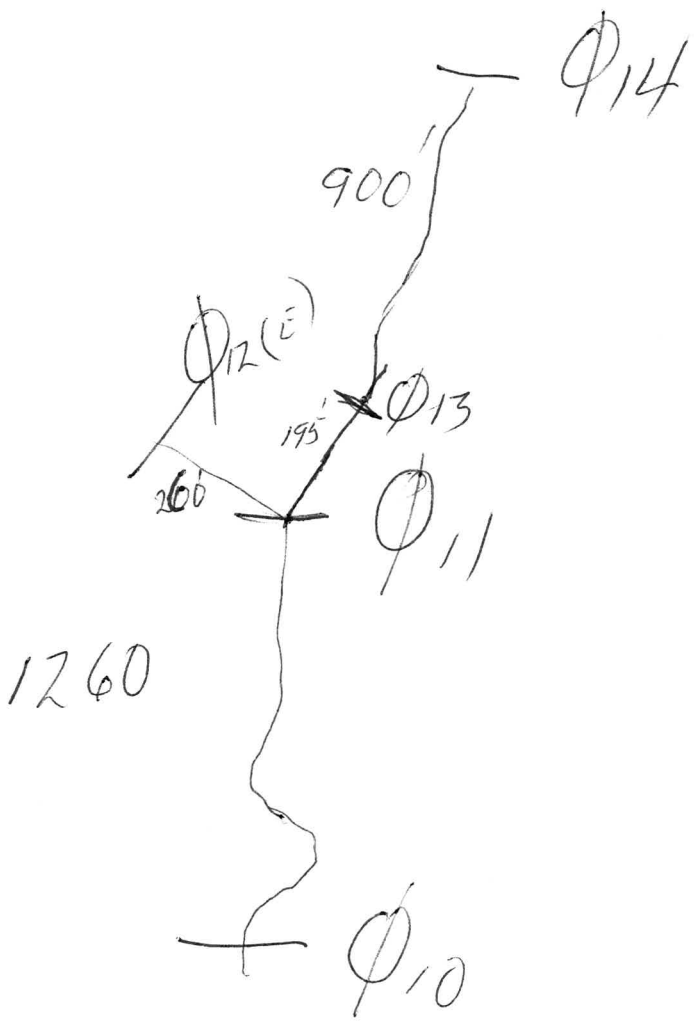
Tested For Cu-Pb-Zn-Ag

Volume Used 10ml AA unit

Date Arrived 23 May 66
Subd 4/6/66

Analyst ABD

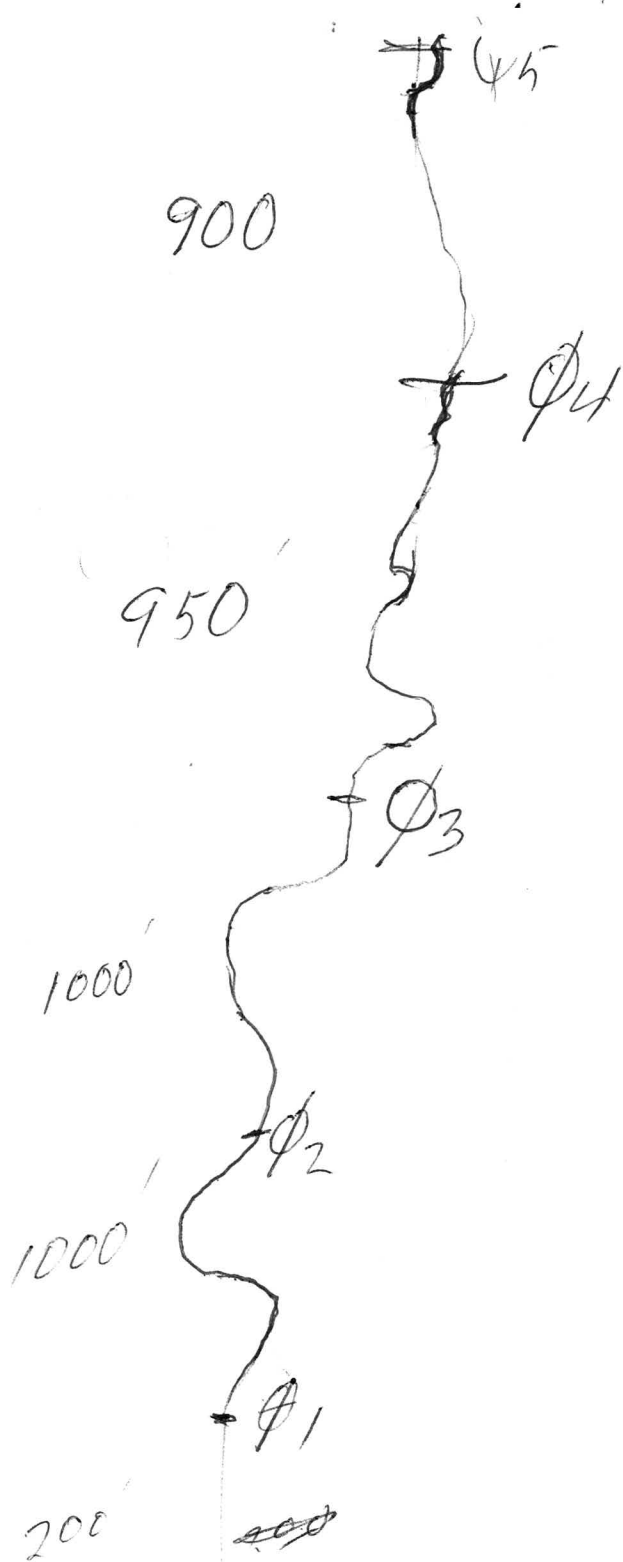
SAMPLE NUMBER		Cu	PPM	Pb	PPM	Zn	PPM	Ag	PPM	PPM	PPM
OURS	YOURS										
1	E-11	16%	80	N.D.	ND	65	650				
2	E-0	4%	20	N.D.	ND		200	✓			
3	E-4	25%	125	2%	10		563				
4	E-17	15%	75	8	20		563				
5	E-3	20%	100	2	10		288				
6	E-12	10%	50	4	20		637				
7	E-10	22%	110	4	20		650				
8	E-16	11%	55	6	30		325				
9	E-1	0%	ND	4	20		225				
10	E-W1	5%	25	N.D.	ND		212				
11	E-13	10%	50	4	20		537				
12	E-17A	0%	ND	5	25		375				
13	E-19	12%	60	2	10		700				
14	E-5	13%	65	3	15		575				
15	E-2	2%	40	2	10		250				
16	E-8	0%	ND	N.D.	ND		750				
17	E-9	10%	50	2	10		687				
18	E-15	10%	50	5	25		825				
19	E-7	14%	70	5	25		662				
20	E-18	10%	50	3	15		625				
21	E-14	8%	40	ND	ND		525				
22	E-6	6%	30	1	5		650				
23	<u>Done</u>	5%	25	4	20		55.				ms



Three students working for summer program to start are
conducting a geochemical site near of the canal road area, tributary
of the Laby River west of Ross.

The area is favorable for mineralization in this area
Pb showings are reported in the vicinity of Rom Creek.
Samples are being run for Pb, Zn, Cu and Ag.

Where is near 4 mil?
I French has it for Cook mtn?



900

ψ_5

ϕ_4

950

ϕ_3

1000

ϕ_2

1000

ϕ_1

200

~~400~~

RIVER

ENTRY DATE

07056

75-66
TEL. CODE 203 847-04 COMPLETE PARTIAL

TERMS: 30 DAYS NET—NO CASH DISCOUNT

ITEM	CODE	QTY. ORD.	PART NO.	QTY. SHIPPED	DESCRIPTION
110715		6	0230065	6	CHART PAPER

P. O. NO. - 649

DATE

METHOD

NO. OF CASES

VIA

SIZE

GROSS WEIGHT

NET WEIGHT

QTY. BACK ORD.

PERKIN-ELMER
450 40816

NORWALK, CONNECTICUT, U.S.A.

PACKING
LIST

WE ACCEPT YOUR ABOVE-IDENTIFIED ORDER FOR THE MATERIAL DESCRIBED ABOVE ON THE TERMS AND CONDITIONS APPEARING ON THE FACE AND
STANDING THAT WHERE THE TERMS OF YOUR ORDER VARY FROM THE TERMS OF THIS ACCEPTANCE, THE TERMS OF OUR ACCEPTANCE SHALL CONTROL.
IF DAMAGED, ENTER CLAIM AGAINST CARRIER AS OUR RESPONSIBILITY CEASES WHEN MATERIAL IS DELIVERED TO CARRIERS. REQUEST INSTRUCTIONS IMMEDIATELY.

PACKING LIST-2

WITH THE
RIAL ON
IS OR REJEC

UNDER-
RECEIPT.
CTIONS.

10 ml 55

check

525 650
625 662
687 750
250 575
700

~~525~~

check standard

375 537
212 225 525 650
288 637
200 563
563
650

50 ml

R2-66
R4-66
Zn

R4-66

180 170
105 180
200 185
130 245 215
140
180
1180 390
180 250
180 190 215
170 220
350 390
340

52 sample

50 ml. normally

R2-66