

N ↑ 105 F-10

H. H. HUNNIGAN  
- JULY 14/76

Boundary

To Market

448  
959

986  
987  
988  
989  
990  
991  
992  
993  
994  
995  
996  
997  
998  
999

996  
997

998  
999

1000  
1001

1002  
1003

1004  
1005

1006  
1007

1008  
1009

1010  
1011

1012  
1013

1014  
1015

1016  
1017

1018  
1019

1020  
1021

1022  
1023

1024  
1025

1026  
1027

1028  
1029

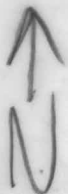
014323

A1223 8-73

105-F-9-10

AV66

H. HANNIGAN



AR2249-19



②

N  
↑

226 O

225 O

Ellin

0228 (bag 227 tore)

← canyon

229 O

0230

chopper hopped

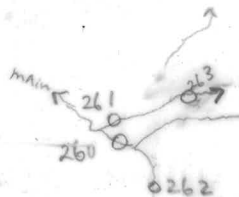
Tench

Surv 27/76

A 12177 426

105 F 10

2  
←



box # 264-266  
1st

0267

0268

2690

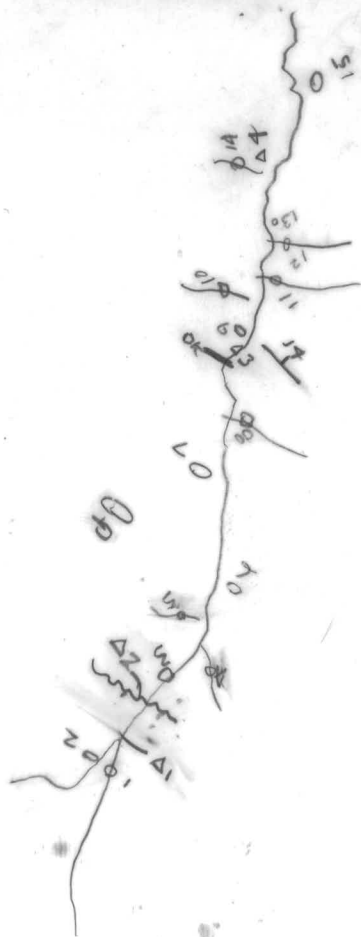
2700 0271-PY6T

Tend  
A12371 384  
June 27/76



105F10

M. FRETWELL  
20/6/76  
A12238-195



105 F10

20/6/76  
A12371-381  
M. FRETWELL



①

PYGT 440 yellow phos

1000

4600

4700

4200

S-1277

422

423

424

425

426

428

430

431

432

433

434

2 ←

Teach  
July 2  
A12371 377  
105 F10

2

1000' } 452 -og - more than -ak?   
 175' } 453 g below 1st peak   
 454 75 paces - before 1st gully   
 455 280 paces silt 2nd gully - S   
 456 2000' - L   
 457 2000' SP   
 458 - S end of lake

- photo on   
 air photo when got   
 back

0451

0448

0447  
0446

0444

0443

0442

0441

0439

0438

0437

0435 - ridge top

0434

0433

0432

Teach   
 July 2   
 A12371 379   
 105 F 10

③

OPNT 458

0457

.456

0455

0454

0453

.452

0451

↑ N

Tench  
July 2  
A12693 370  
105 F10



105 F-10

21/6/76

A12371-379

M. Fretwell



105E10

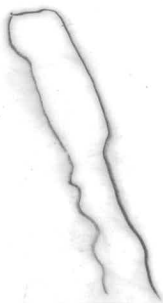
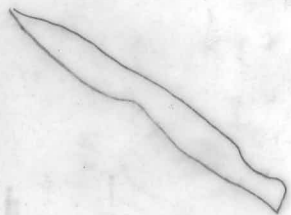
21/8/76

M. F. F. F.

A12238-197







↑  
 P. DEAN  
 23 JUNE 1976  
 A12693-371  
 105F-10

End of mapping

15 → 20 volcanic + SEAP.

△ 16  
 ● 43  
 ● 35

△ 14  
 ● 34  
 ● 33  
 ● 31

black  
 dk. brown  
 to acid vult.

pyroclastic

12 calc acid

40

11

massive  
 volcanic  
 vult.

pyroclastic

13 calc vult.

P16D-28L  
 to 30L  
 SOILS IN  
 Gossan

calc acid  
 pyroclastic

27L  
 P16D-23L  
 SOILS IN  
 Gossan

10

9

87

↑  
 105F  
 7  
 calc  
 blocky  
 vult.

↑  
 105F  
 7  
 calc  
 blocky  
 vult.

↑  
 105F  
 7  
 calc  
 blocky  
 vult.



170: - 250 -  
174: - 330 -  
175: - 1480 -  
177: - 260, 700  
178: - 700 -  
179: - 1600 -

604  
2A, 870, 125

603  
BI SHK

602  
Sole

601  
LINSTAI

600  
AI 3

599  
AI 2

598  
AI 1

597  
AI 0

596  
AI -1

595  
AI -2

594  
AI -3

593  
AI -4

592  
AI -5

591  
AI -6

590  
AI -7

589  
AI -8

588  
AI -9

587  
AI -10

586  
AI -11

585  
AI -12

584  
AI -13

583  
AI -14

582  
AI -15

581  
AI -16

580  
AI -17

579  
AI -18

578  
AI -19

577  
AI -20

576  
AI -21

575  
AI -22

574  
AI -23

573  
AI -24

572  
AI -25

571  
AI -26

570  
AI -27

569  
AI -28

568  
AI -29

567  
AI -30

566  
AI -31

565  
AI -32

564  
AI -33

563  
AI -34

562  
AI -35

561  
AI -36

560  
AI -37

559  
AI -38

558  
AI -39

557  
AI -40

556  
AI -41

555  
AI -42

554  
AI -43

553  
AI -44

552  
AI -45

551  
AI -46

550  
AI -47

549  
AI -48

548  
AI -49

547  
AI -50

546  
AI -51

545  
AI -52

544  
AI -53

543  
AI -54

542  
AI -55

541  
AI -56

540  
AI -57

539  
AI -58

538  
AI -59

537  
AI -60

536  
AI -61

535  
AI -62

534  
AI -63

533  
AI -64

532  
AI -65

531  
AI -66

530  
AI -67

529  
AI -68

528  
AI -69

527  
AI -70

526  
AI -71

525  
AI -72

524  
AI -73

105 F-10

4 Jul 76

M. Wetzel

A12249-89

101. 11. 501. 5000

179: 16, 1600, 62

181.

182

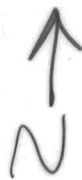
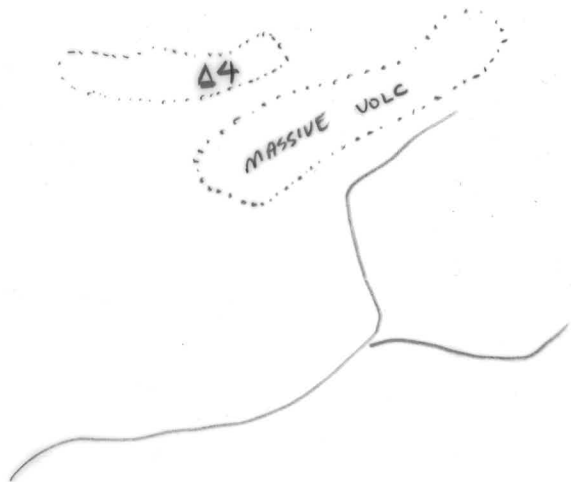
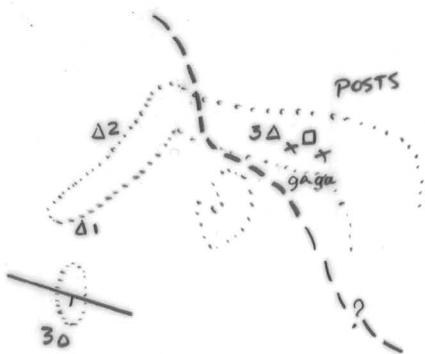
X

↑  
N  
P. DEAN  
20 JUNE 76  
105 F-10  
2572

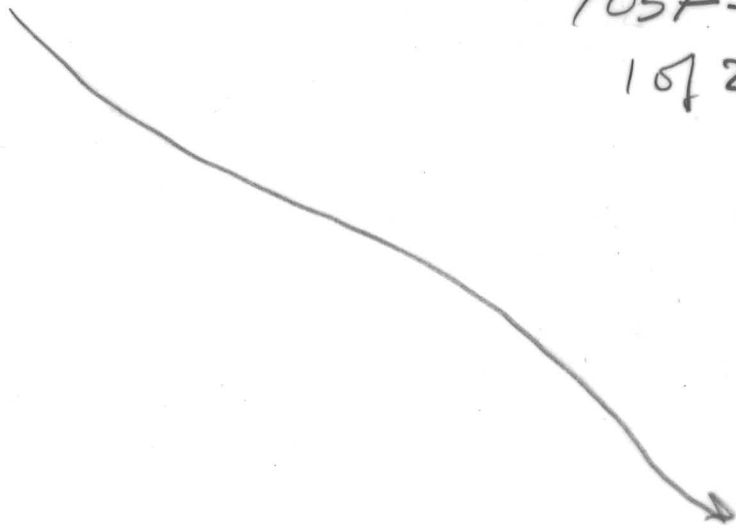
PYRITE  
PHYLLITE  
↓  
Δ7 Δ8 Δ9  
Δ6  
dk  
grey  
Phyll

Δ5

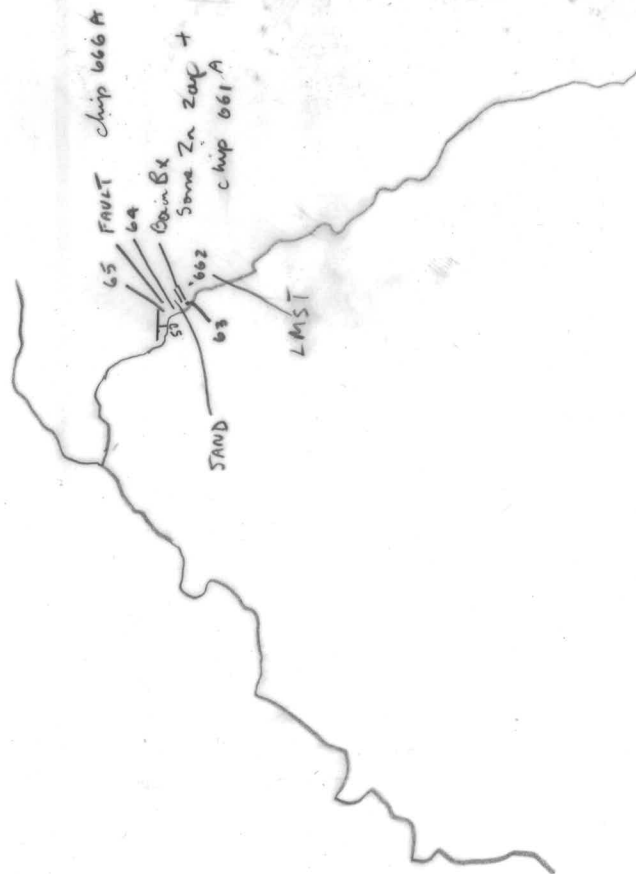
A12693-369



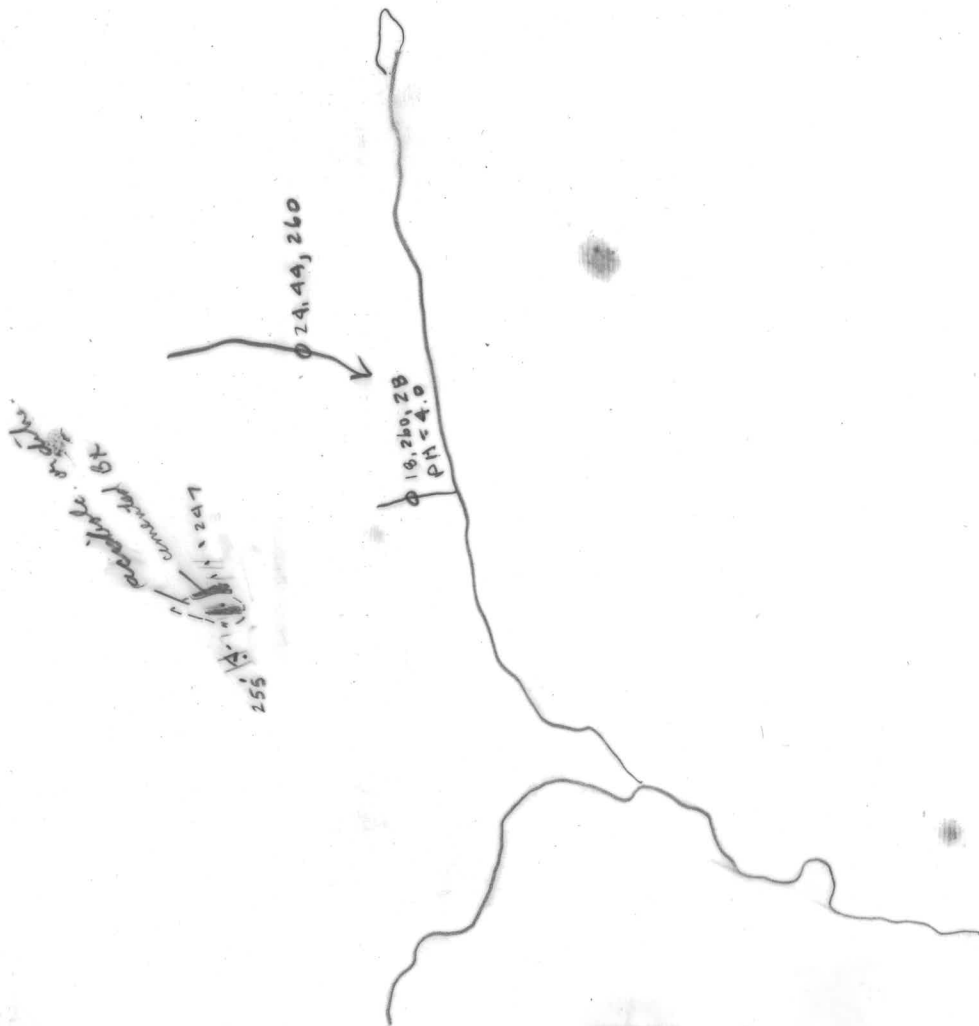
P. DEAN  
20 JUNE 76  
105F-10  
1072



A12371-379



105G-5.  
6/7/76  
M. FRETWELL  
A12178-439



248	16, 220, 36
49	14, 240, 20
50	60, 710, 40
51	14, 2200, 10
52	22, 220, 32
53 R.	21, 124, 41
54	42, 290, 46
55	44, 194, 40

LOS FEIO  
 6/7/76  
 M. FRETWELL  
 A12249-90

N 105 F 10

June 27/36

H. WANNING



D

A12238-173

N ↑ 105-F-10

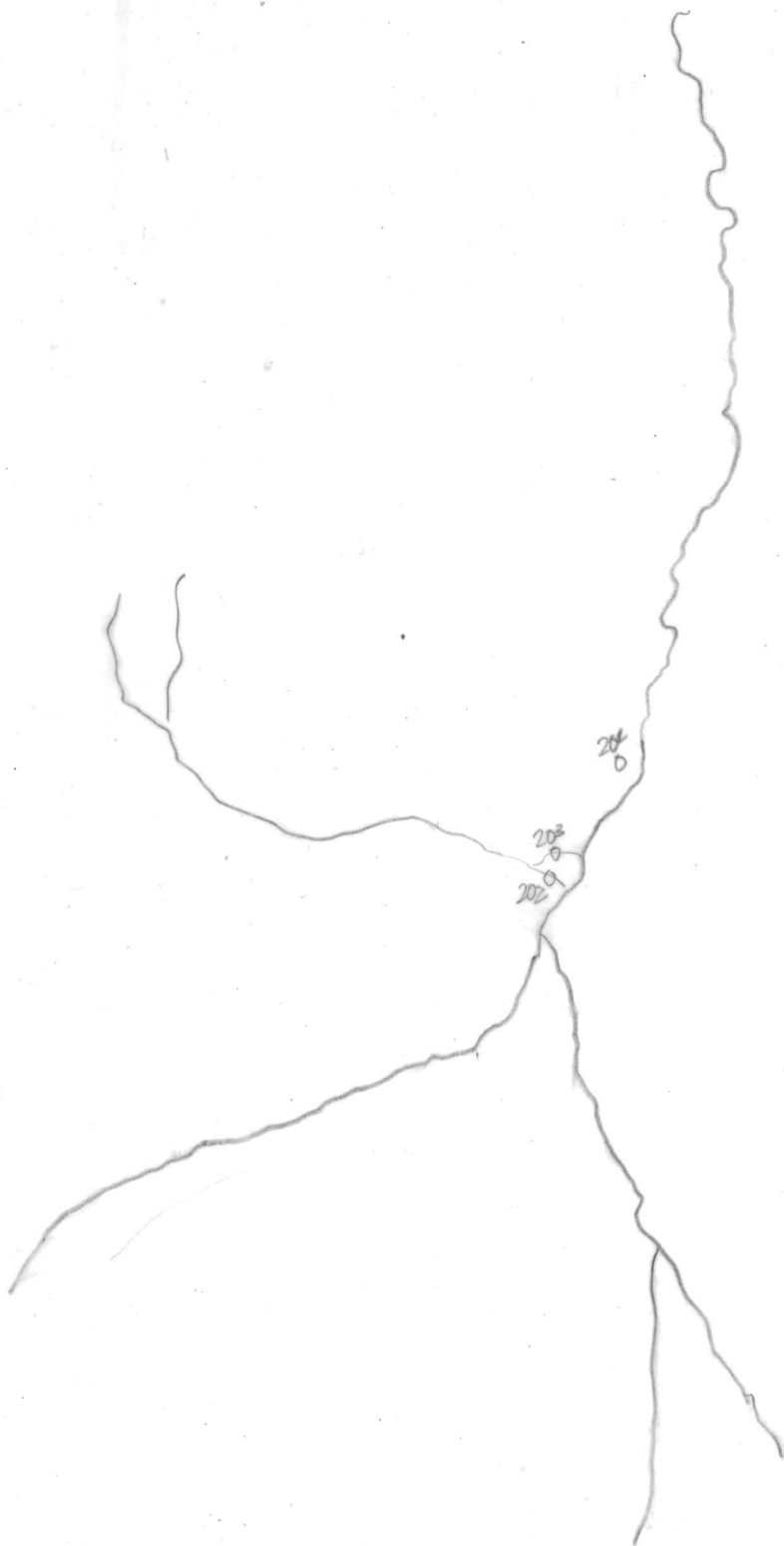
H. HANNIGAN

JUNE 27/76

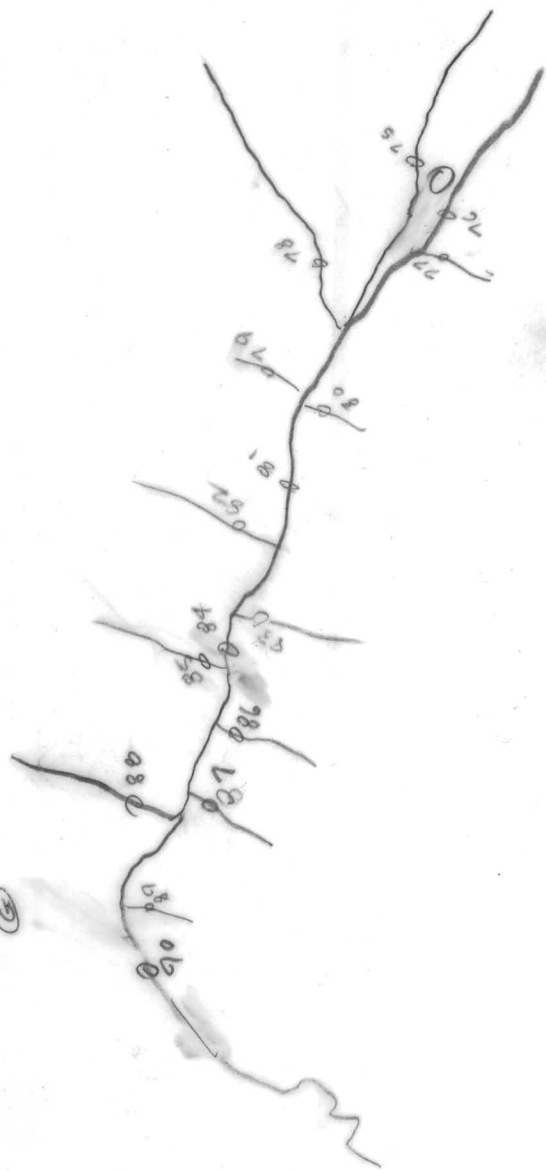


(3)

N ↑ 105-f-10  
H. HANWIGAN  
105-f-10



(2)



105F10

22/6/76

A12249-89

M. Tschwell

①

N 105-F-10  
H. HANNIGAN  
JULY 2/76



A12391-576

②

N↑ 105 F-10

HANNIGAN  
JULY 2/76



(3)

NA 105-F-10

H. HANNIGAN

JULY 2/76

A 0238-201



(4)

AB238-202

105  
106  
107  
108  
109  
110  
111  
112  
113  
114  
115  
116  
117  
118  
119  
120  
121  
122  
123  
124  
125  
126  
127  
128  
129  
130  
131  
132  
133  
134  
135  
136  
137  
138  
139  
140  
141  
142  
143  
144  
145  
146  
147  
148  
149  
150  
151  
152  
153  
154  
155  
156  
157  
158  
159  
160  
161  
162  
163  
164  
165  
166  
167  
168  
169  
170  
171  
172  
173  
174  
175  
176  
177  
178  
179  
180  
181  
182  
183  
184  
185  
186  
187  
188  
189  
190  
191  
192  
193  
194  
195  
196  
197  
198  
199  
200

N<sup>A</sup> 105-F-10  
H. HANNIGAN  
JULY 2/76

5

NA

105-F-10

H. HANNIGAN

JULY 2/70

36

365

364

363

362

361

5

A12249-79

NT

(6)

105-F-10  
H. HANNIGAN  
JULY 2/76

374

373

372

371

370

369

368

367

366

APD 249-80

^

170. -250 -  
173. -160,420  
174. -980 -  
175. -1480 -  
177. -269,400  
SP 178. -700 -  
179. -1600 -



105 F-10

5/7/76

A12249-83

M. Retwell

①

N

damaged SP channel  
 737 738  
 739 740  
 741 742  
 743 744  
 745 746  
 747 748  
 749 750  
 751 752  
 753 754  
 755 756 yellow #165  
 757 758  
 759 760  
 761 762  
 763 764  
 765 766  
 767 768  
 769 770  
 771 772  
 773 774  
 775 776  
 777 778  
 779 780  
 781 782  
 783 784  
 785 786  
 787 788  
 789 790  
 791 792  
 793 794  
 795 796  
 797 798  
 799 800  
 801 802  
 803 804  
 805 806  
 807 808  
 809 810  
 811 812  
 813 814  
 815 816  
 817 818  
 819 820  
 821 822  
 823 824  
 825 826  
 827 828  
 829 830  
 831 832  
 833 834  
 835 836  
 837 838  
 839 840  
 841 842  
 843 844  
 845 846  
 847 848  
 849 850  
 851 852  
 853 854  
 855 856  
 857 858  
 859 860  
 861 862  
 863 864  
 865 866  
 867 868  
 869 870  
 871 872  
 873 874  
 875 876  
 877 878  
 879 880  
 881 882  
 883 884  
 885 886  
 887 888  
 889 890  
 891 892  
 893 894  
 895 896  
 897 898  
 899 900  
 901 902  
 903 904  
 905 906  
 907 908  
 909 910  
 911 912  
 913 914  
 915 916  
 917 918  
 919 920  
 921 922  
 923 924  
 925 926  
 927 928  
 929 930  
 931 932  
 933 934  
 935 936  
 937 938  
 939 940  
 941 942  
 943 944  
 945 946  
 947 948  
 949 950  
 951 952  
 953 954  
 955 956  
 957 958  
 959 960  
 961 962  
 963 964  
 965 966  
 967 968  
 969 970  
 971 972  
 973 974  
 975 976  
 977 978  
 979 980  
 981 982  
 983 984  
 985 986  
 987 988  
 989 990  
 991 992  
 993 994  
 995 996  
 997 998  
 999 1000

Trench July 12  
 105 F 10  
 A12249 87



108801  
 108802  
 108803  
 108804  
 108805  
 108806  
 108807  
 108808  
 108809  
 108810  
 108811  
 108812  
 108813  
 108814  
 108815  
 108816  
 108817  
 108818  
 108819  
 108820  
 108821  
 108822  
 108823  
 108824  
 108825  
 108826  
 108827  
 108828  
 108829  
 108830  
 108831  
 108832  
 108833  
 108834  
 108835  
 108836  
 108837  
 108838  
 108839  
 108840  
 108841  
 108842  
 108843  
 108844  
 108845  
 108846  
 108847  
 108848  
 108849  
 108850  
 108851  
 108852  
 108853  
 108854  
 108855  
 108856  
 108857  
 108858  
 108859  
 108860  
 108861  
 108862  
 108863  
 108864  
 108865  
 108866  
 108867  
 108868  
 108869  
 108870  
 108871  
 108872  
 108873  
 108874  
 108875  
 108876  
 108877  
 108878  
 108879  
 108880  
 108881  
 108882  
 108883  
 108884  
 108885  
 108886  
 108887  
 108888  
 108889  
 108890  
 108891  
 108892  
 108893  
 108894  
 108895  
 108896  
 108897  
 108898  
 108899  
 108900

Tench July 12  
 105 F10  
 A12238 194 (M)

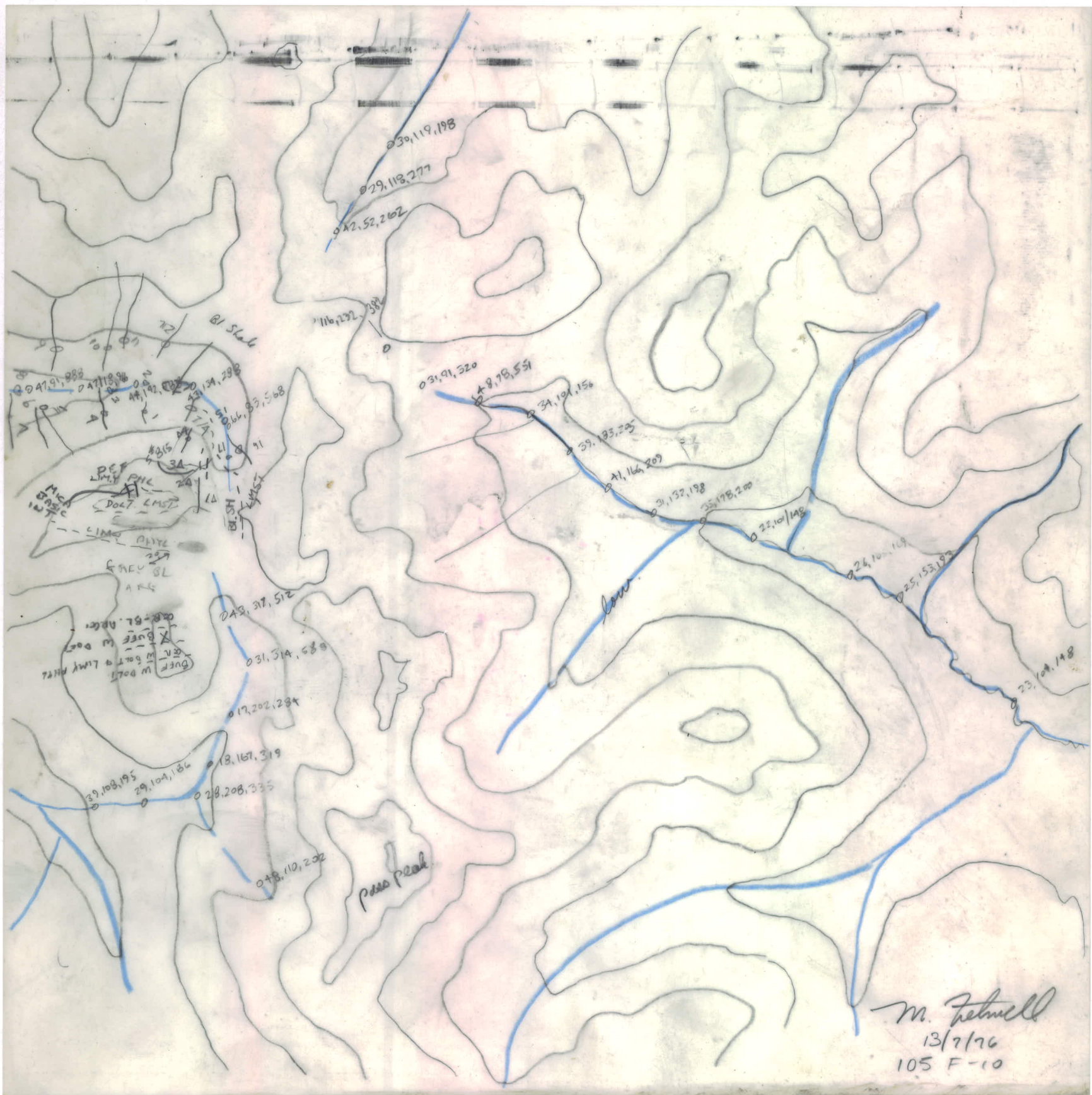


105 E-10

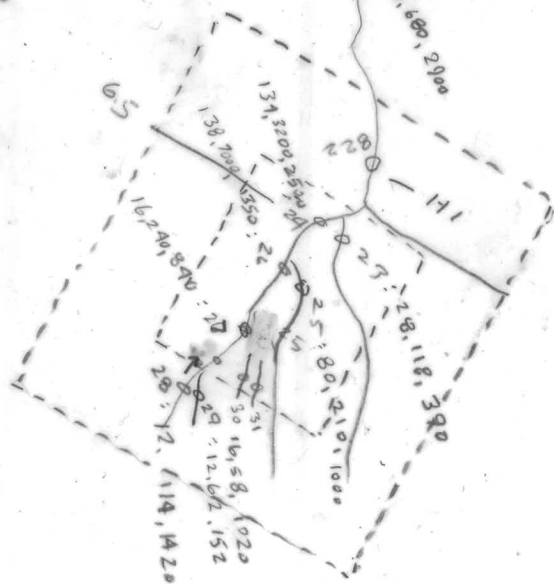
13/2/76

M. Fretwell

A12693-369



M. Fennell  
13/7/76  
105 F-10



105F-10

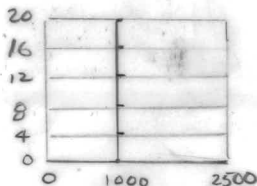
1917/76

W. A. Astwood

A12238-200



Askin group grid



July 28  
Harrigan + Tench  
A 12249-84  
105 F 10

N 105 F10  
H. HANNIGAN  
AUG 7

(2)



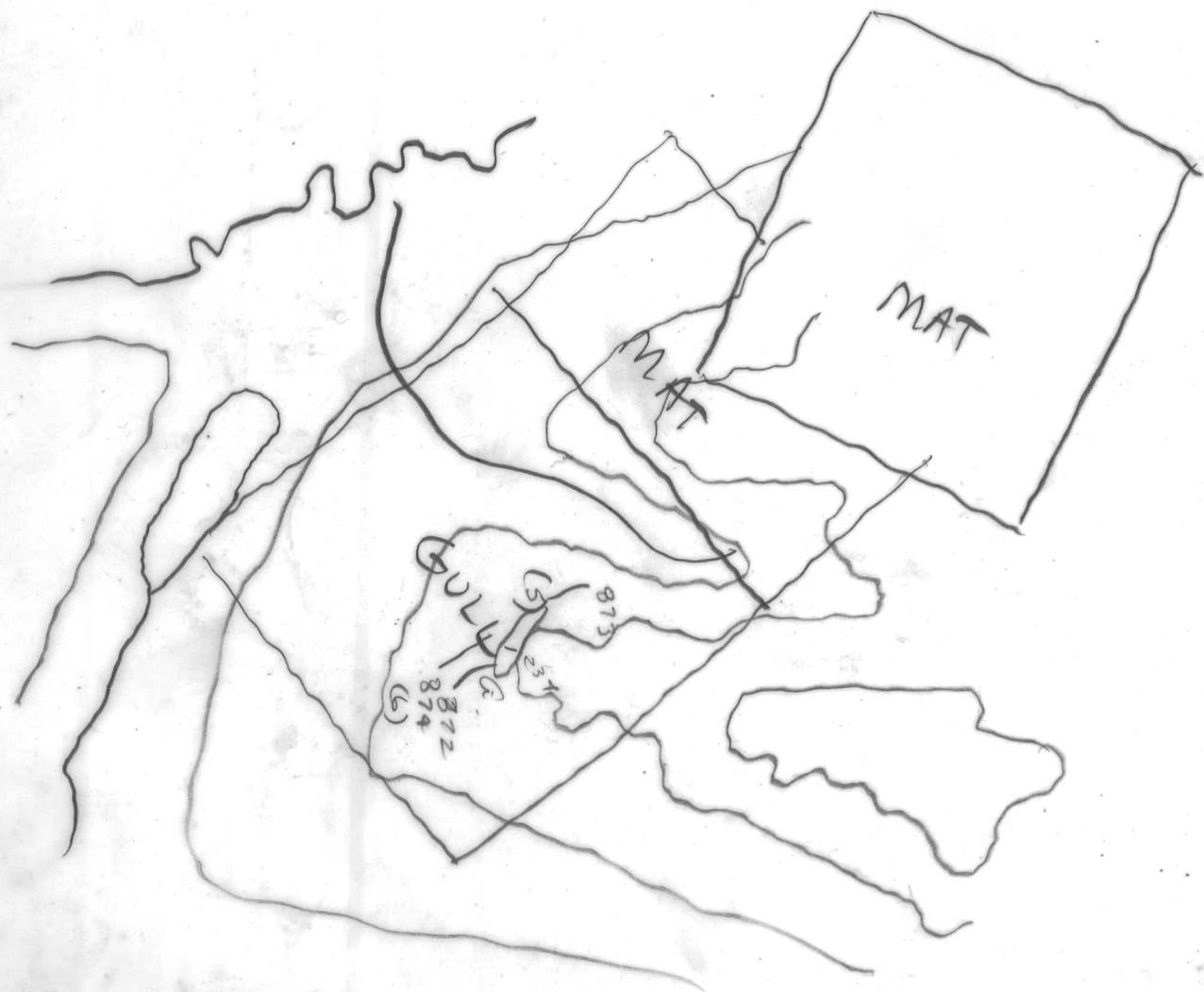
A12371-374

N 105° 10'  
AV 4  
H. HANINGAN

①



A10693-368



N↑ 105-F-10

H HARRIGAN

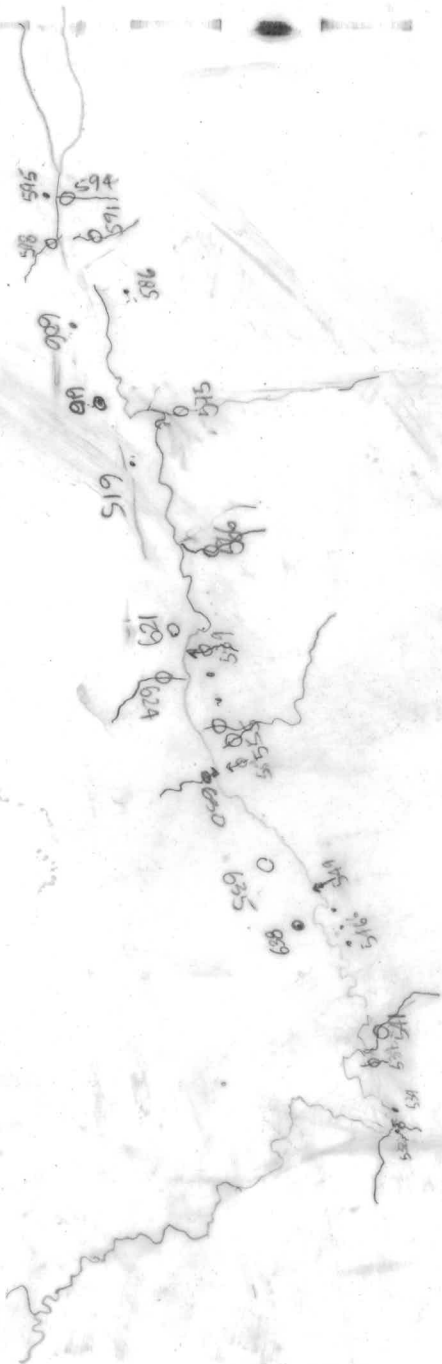
JULY 12/76



A 12693-368

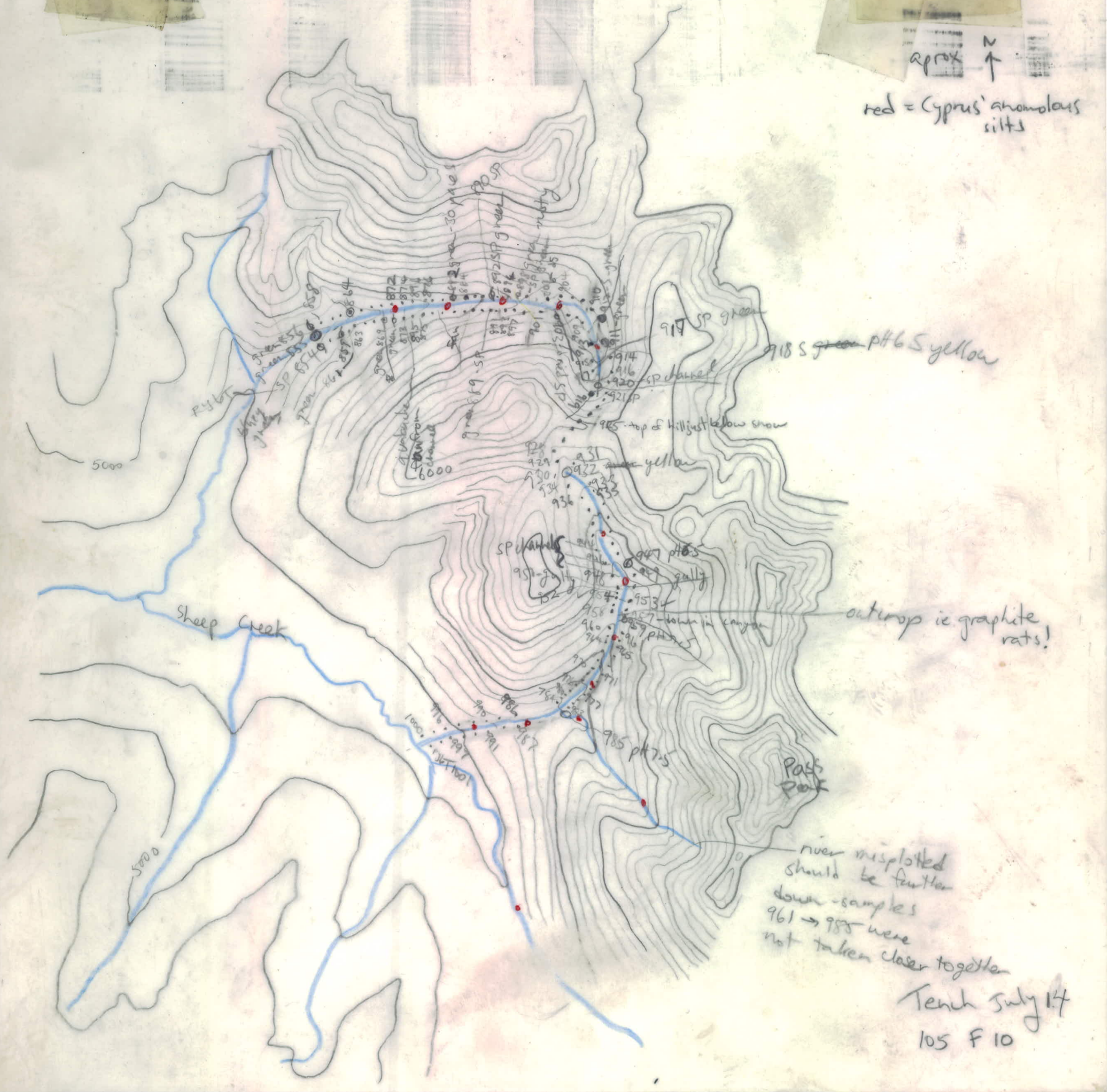
(2)

N↑  
105-F-10  
H. HANNIGAN  
July 9/76



A 12693-869

approx N ↑  
red = Cyprus' anomalous  
silt



river misplotted  
should be further  
down - samples  
961 → 988 were  
not taken closer together

Tench July 17  
105 F 10