

July 19/63

Connected Conwest helicopter,
arrived 1:30 P.M. at cabin

Carried out. recy of Red
Mtn - pyritic argillite with
much loose textured quartz.
Needs further investigation

014328

Properly showings.

Furthest east trenches
and vein. Within 50' of
granitic contact.

Granite is near pegmatitic
with some felsitic phases on
border - incl. xenolite of schist

Veins in Foliation? - bedding
of schist. width variable
6' → 10' - some smaller
cross veins

Galena in irregular
zones - could be across
main vein? - " → a few ¹⁰⁰
feet 30% galena or less
best avg. - guess 40-60% Ag

Plan of work - check 2
main E vein system and
granitic contact to N.

Then section across Yukon
Gp to follow S of Baswell.
Check showings to W

Boswell ^{1/4}

Put in the Rain
WATERPROOF

Elev Camp 3130'

July 20/63

3200' ① Sta. pit 400' N of camp. -

qtz calcite vein 3' wide
in schist - qtz-bio-ser. -

carbonate in schist 1' from wall
rusty alt 1' into wall rock

3850' ② qtz vein 60/55 SE 1.5' wide
no calcite or wall vein alt - Pb

4135' ③ - 6' thick - no sep or calcite 350/65E

4000' ④ - Pb - 8' vein

Calcite in vein toward granite
contact - 50'

Notes on qtz go fold porph-
WNW trending body 100-200'
thick in folia? - disjunctive
light rusty br. color, rotten
weathering

Serpentine - 200' body
round outline

Very distinctive Fractured
reddish and grey weathering.

- green → black serp in
places - very fresh light green
to check!

Schist adjacent strongly
pyritic and rusty (burned appear.)

July 21


3135' Camp

3860 (5) Bos - 3' qtz vein - spec
 shows - 2 by grade vein +
 wall rock 6" from vein
 wall rock alt. 2-3"
 - bio schist country etc
 galena hard to find replace but much in
 blasted debris - avg < 5% Pb?
 ind. Pb in crown structure in vein.

Also spec of qtz-feld pop
 junction below (5)

D3-21.7. shows qtz 2' sill in 150' folia
 bio schist - granite phase of 'when Gpi'

Drg-folds 300' E of D3-21.7.
 looking W - sec

to  N same?

3400 Pit #2 is on gr contact

Thin cross structure 6"-2'

wide + pyrochroite

pyrite

chalcopyrite

D4.21.7 - bio-sil schist. for

300' W of pit #2

good location

DS.21.7 - Marble - white 130/85.5

3400' elev thickness - min - 60-80

max 150-200?

Boswell

3225 Base

July 22, 1953

Just cross Boswell. spec D3-22.7
of mica-schistose gneiss ~ 115/55 SW

3450' ^{1st} ^{2nd} stop - good mica gneiss

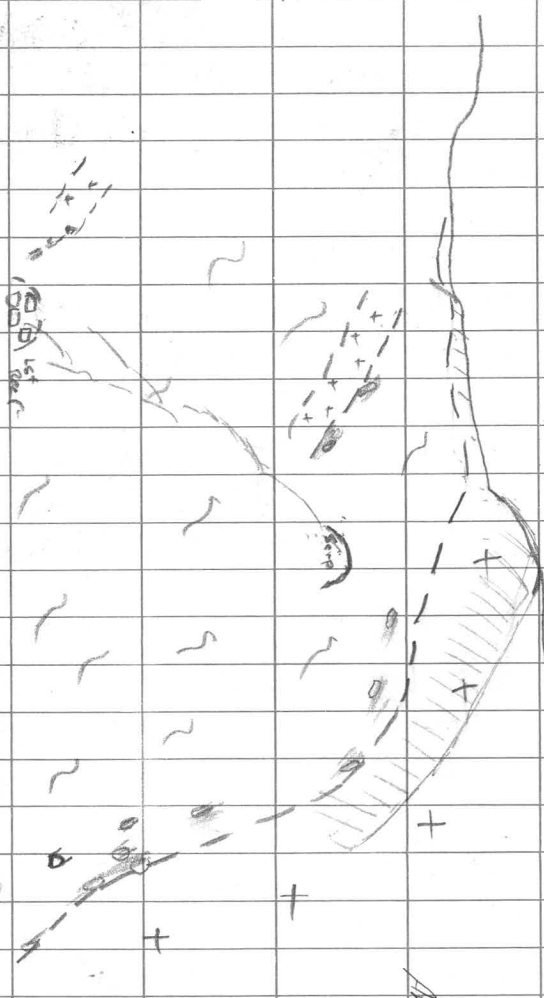
3600' ⑥ Qtz veins 1'-3' wide in fold
of schistose gneiss - 3 veins

3675 ⑦ Qtz veins a few" wide on cross
- trace in gneiss schist

Line on S side is approx
along strike from 1st reef
of white marble on N side
- ~~at line~~ - white → lt. grey

D3-22.7 - spec from top of
ridge - bio-feld gneiss
or. QD gneiss

Sketch looking N across Boswell R.

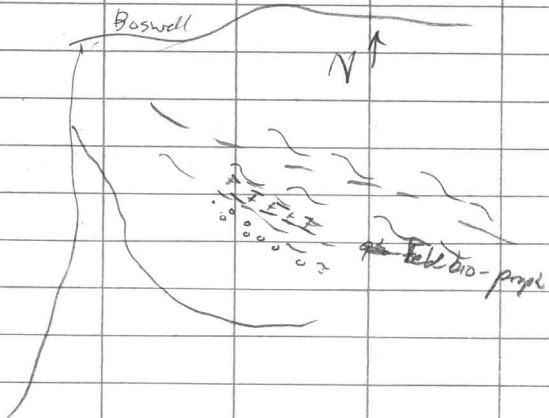


Area photo 29
R6112

Boswell R.

July 22/63

D4 22.7 Bio-qtz. fela-
gneiss strongly foliated typical
of SE ridge.



Baswell Riv

Put in the Rain
WATERPROOF

Base

3150'

July 23/63

3450 (8) On E side of steep Cr. gulley - irregular
in foliation 6-8' thick - Spec
bio-feld gneiss

(7) Across Cr. 3' thick - regular

Elev at NW top 4650'.