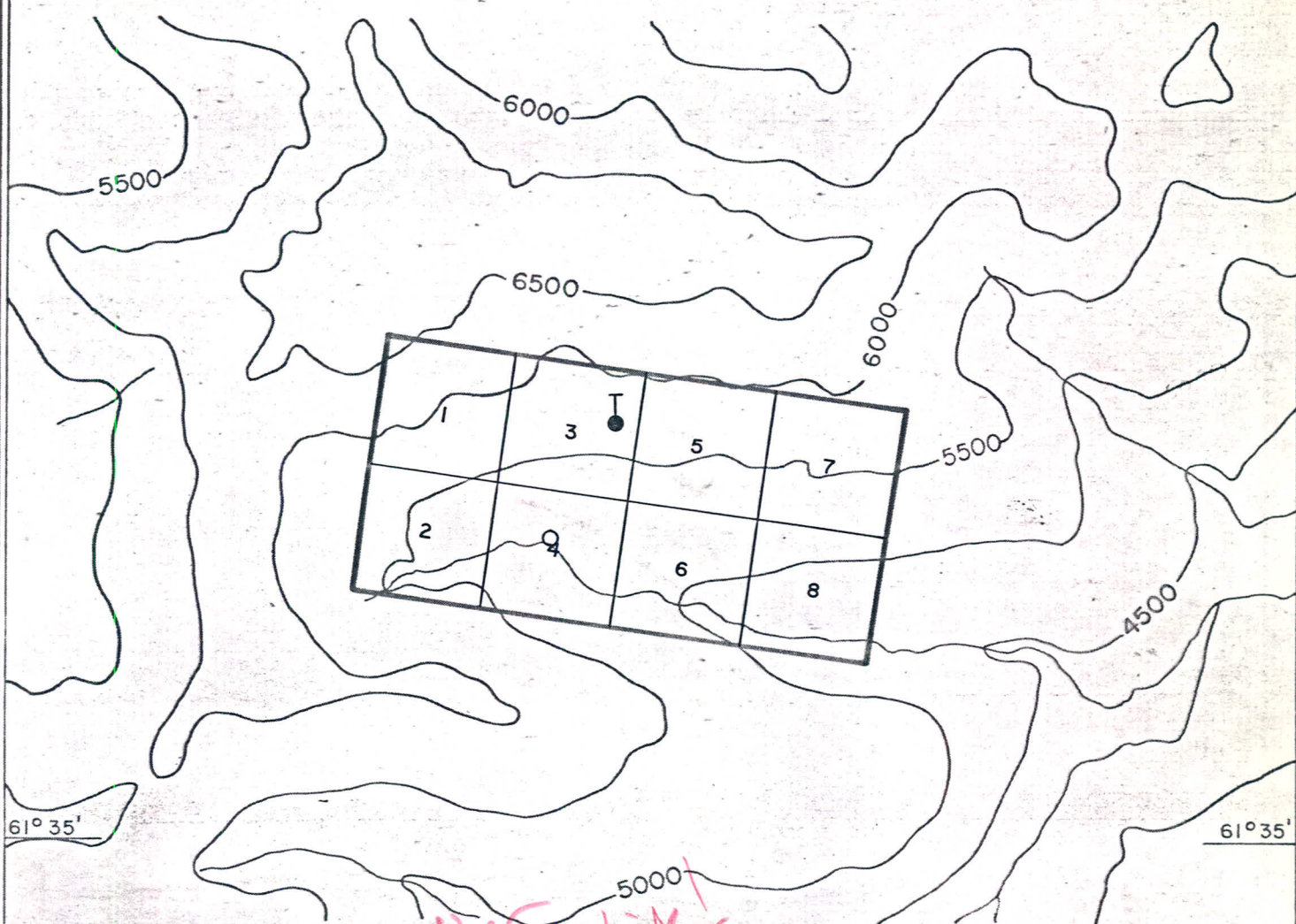


132° 20'



61° 35'

61° 35'

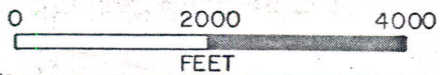
LEGEND

- Proposed Drill Hole Location
- Proposed Water Supply

*Radio transmitter
Gov'to Lake -> I think!*

(Topo Base - Gov't. Claim Map)

132° 20'



014361

CYPRUS ANVIL MINING CORPORATION	
PELMAC PROJECT	
EROS CLAIMS	
CLAIM MAP & PROPOSED DDH SITE	
NTS 105 F-9 SURVEY BY L. C. P. DRAWN BY C. L. C.	DATE: APRIL 24, 1980