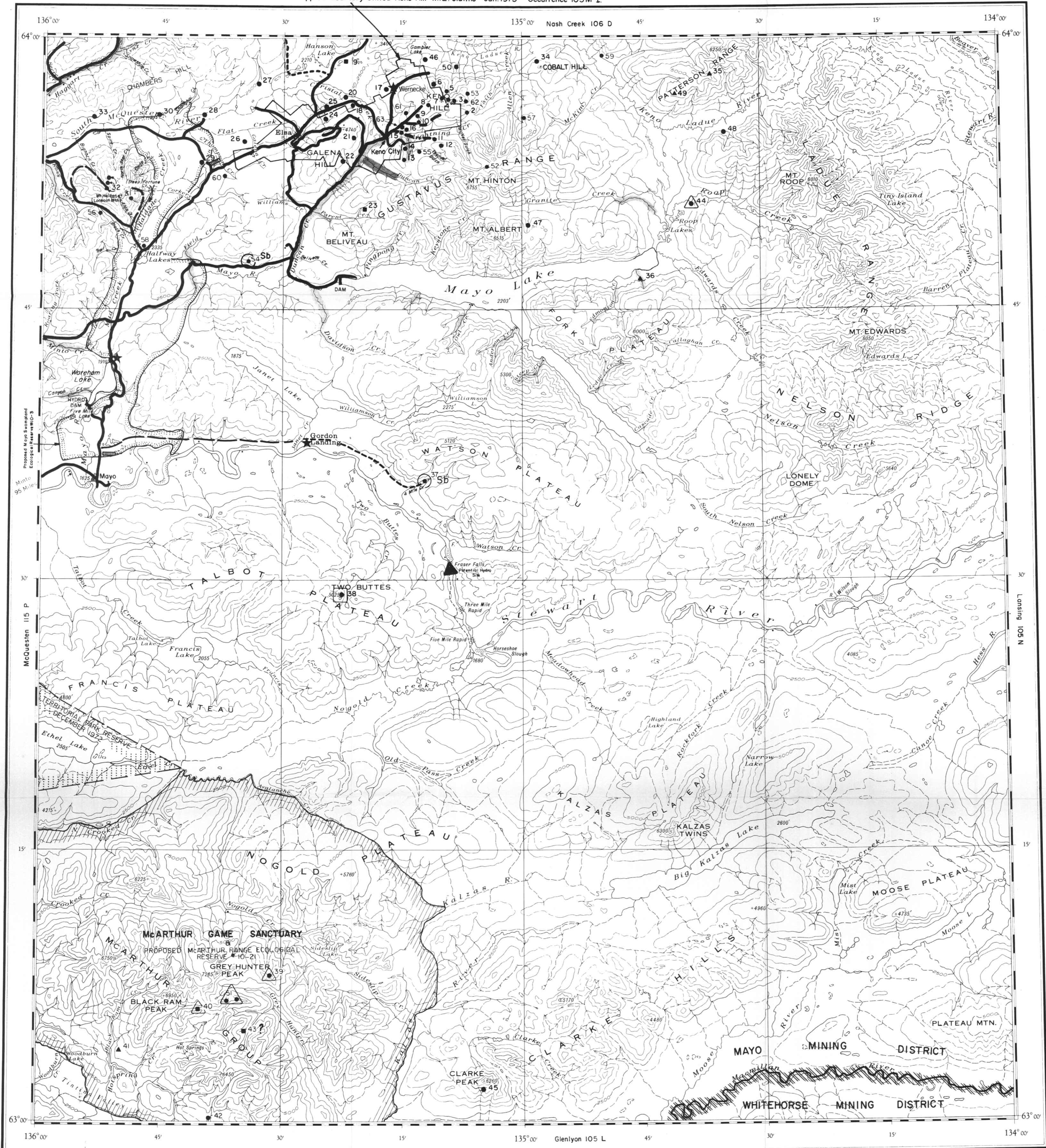


Approx. boundary United Keno Hill M.L. claims - Jan. 1973 - Occurrence IO5M 1.

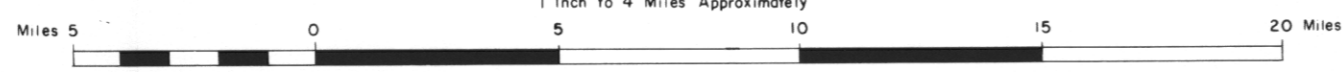


- 1 UNITED KENO HILL
- 2 FAITH
- 3 DUNCAN
- 4 GOLD QUEEN
- 5 SILVER BASIN
- 6 NABOB No. 2
- 7 LADUE FRACTION
- 8 COMSTOCK
- 9 APEX
- 10 VANGUARD
- 11 HOMESTAKE
- 12 CHRISTINE
- 13 MO
- 14 MAYBRUN
- 15 HOGAN
- 16 RUNER
- 17 WERNECKE
- 18 FORMO
- 19 NOMAD
- 20 PADDY
- 21 EAGLE
- 22 FISHER
- 23 PARENT
- 24 CREAM and JEAN
- 25 NORD
- 26 GERLITZKI
- 27 UR
- 28 SHANGHAI
- 29 WAYNE
- 30 ARGENT
- 31 STREBCHUK
- 32 MT. HALDANE
- 33 LAYSIER
- 34 COBALT
- 35 PATTERSON
- 36 ETTA
- 37 GORDON
- 38 TWO BUTTES
- 39 SIDESLIP
- 40 PIMA
- 41 RAM
- 42 HOT SPRING
- 43 LOST WERNECKE COPPER
- 44 ROOP
- 45 ABLE
- 46 MOON
- 47 MT. ALBERT
- 48 MCKIM
- 49 VACA
- 50 NERO
- 51 FRIESEN
- 52 MT. HINTON
- 53 AVENUE
- 54 CHANGE
- 55 YONO
- 56 SUNDOWN
- 57 GUSTAVUS
- 58 HALFWAY
- 59 RANKIN
- 60 NEWRY
- 61 CHRISTAL
- 62 SEGSWORTH
- 63 IRONCLAD

- REFERENCE**
- Highway
  - Tote trail
  - Winter trail
  - Airstrip (length if known)
  - Historic site or recreation area
  - Mining district boundary
  - Territorial boundary
  - Microwave tower

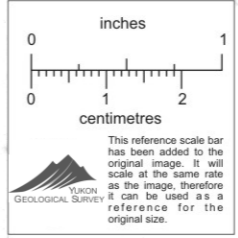
# IO5 M MAYO

SCALE 1:250,000  
1 inch to 4 Miles Approximately



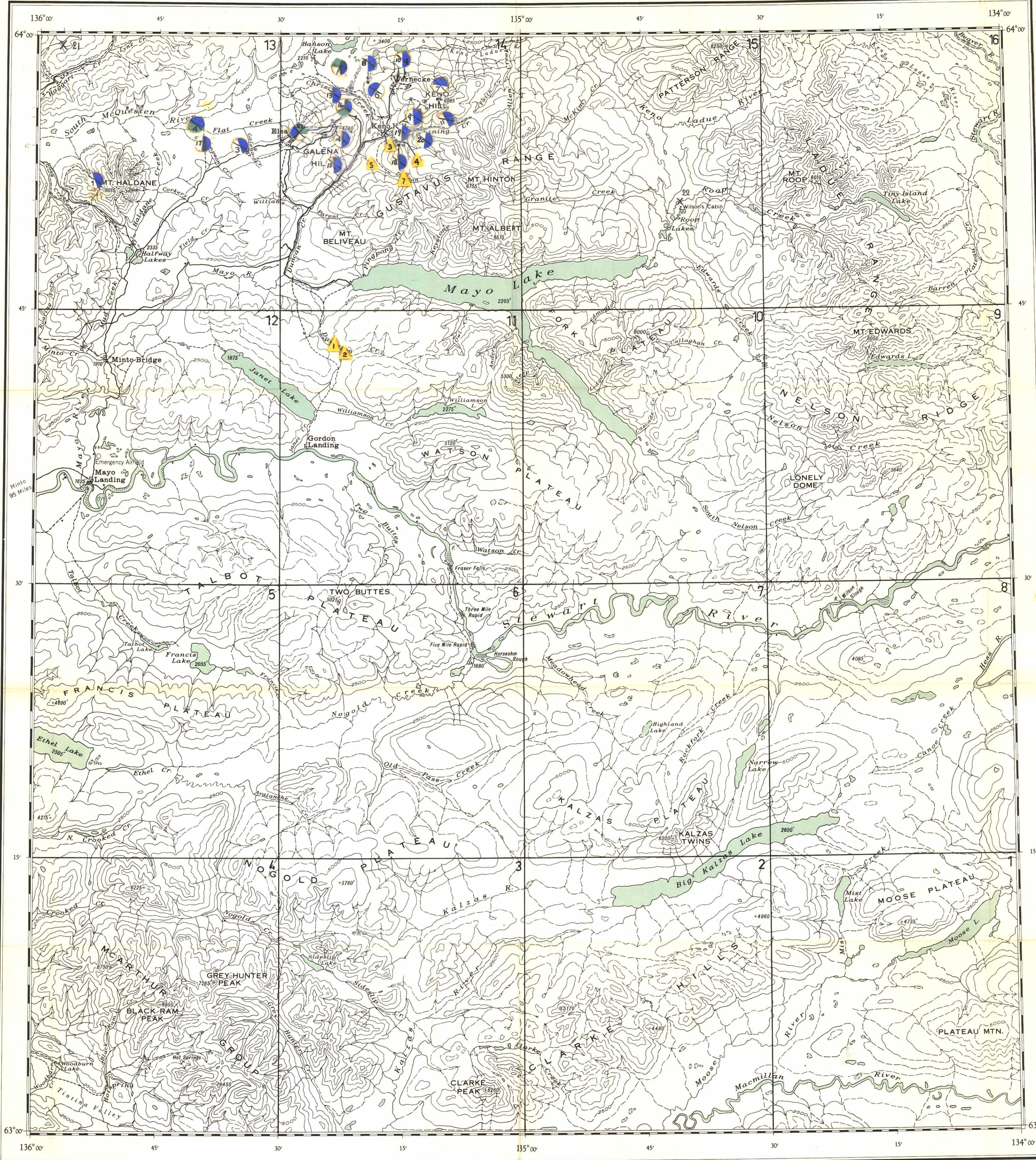
- ACCURACY OF LOCATION**
- Within 1/2 mile
  - 1/2 to 2 miles
  - Less than 2 miles

- CLASSIFICATION OF DEPOSITS**  
containing one or more of Cu, Mo, W
- Vein
  - Skarn
  - Porphyry
  - Magmatic
  - △ Stratiform
  - Massive sulfide
  - Copper in basic lava
  - Uncertain
  - Placer Occurrences



Northern Cordillera Mineral Inventory - 1972 - Archer, Cathro & Associates Ltd.

**ALL KNOWN OCCURRENCES ARE PLOTTED ON THIS MAP**  
Those containing Cu-Mo-W are classified according to type of deposit with symbols as shown in legend.  
Occurrences of Coal, Asbestos, Iron and Nickel are symbolized on the map with the letters C, A, F, N respectively.



**MINERAL SHOWINGS LOCATION MAP**

**LEGEND:**

**LODE DEPOSITS**

- MINERAL PRODUCER (PAST, PRESENT OR FUTURE)
- PROSPECT
- MINERAL OCCURRENCE (SMALL OR NO INFORMATION AVAILABLE)

**COLOR CODE:**

- GOLD
- SILVER
- COPPER
- LEAD
- ZINC
- TUNGSTEN
- MOLYBDENUM
- IRON
- GARNET
- NICKEL
- ASBESTOS

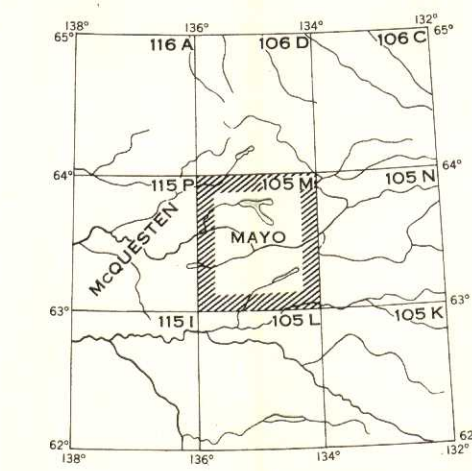
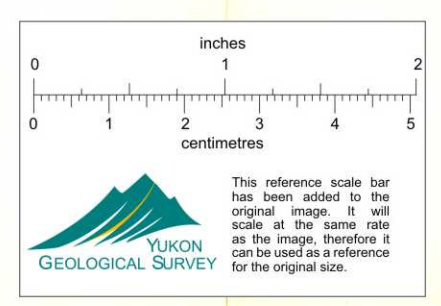
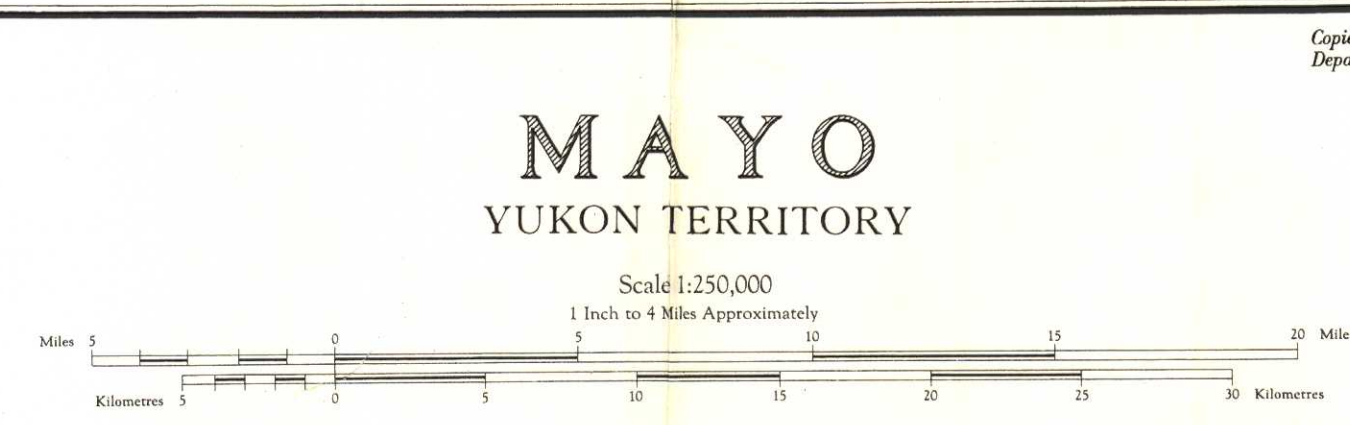
**PLACER DEPOSITS**

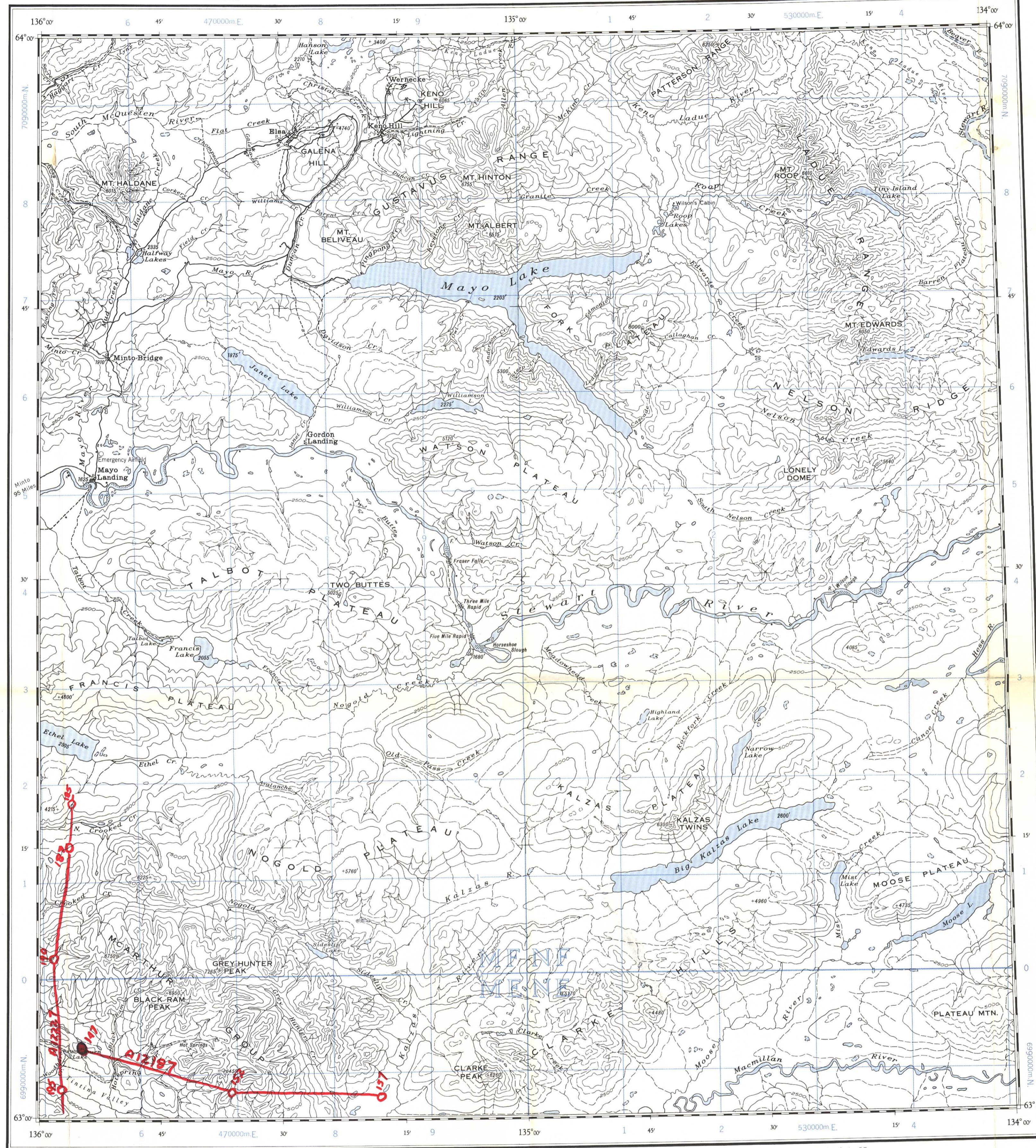
- GOLD
- TIN

**REFERENCE**

Road and buildings.....	—————
Road not well travelled.....	.....
Trail and winter road.....	.....
Church.....	.....
Post office.....	.....
Lake and stream (position approximate).....	.....
Fall and rapid.....	.....
Sand or gravel.....	.....
Contours (interval 500 feet).....	.....
Contours (position approximate).....	.....
Height in feet above Mean sea level.....	.....
Mine.....	.....

Published 1950. Previous edition 1941.  
 Surveys and Topography by the Topographical Survey, 1937.  
 Reprinted with corrections at the Surveys and Mapping Branch, Ottawa, 1950.  
 Approximate magnetic declination 34°30' East.  
 The declination of the compass needle is decreasing 4 minutes annually.  
 Converted from 1:253,440 to 1:250,000 by the Surveys and Mapping Branch.





Refer to this map as: 105M EDITION 2 ASE SERIES A 302

GRID ZONE IDENTIFICATION	
8V	70
TO GIVE A REFERENCE TO NEAREST 1000 METRES	
EXAMPLE: STREAM JUNCTION	
SQUARE: Read letters of 100,000 m. square NF	
EASTING: Read number on grid line immediately to left of point	0
Estimate tenths of a square from this line eastward to point	2
NORTHING: Read number on grid line immediately below point	4
Estimate tenths of a square from this line northward to point	45
MILITARY GRID REFERENCE (to nearest 1000 metres)	NF0245
If reporting beyond 10° in any direction, prefix Grid Zone Designation as: BVNF0245	

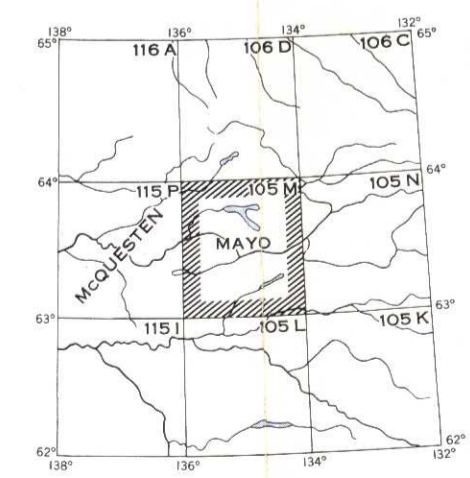
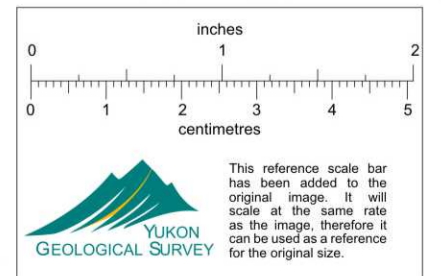
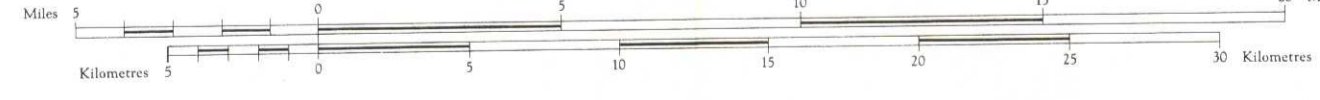
TEN THOUSAND METRE  
UNIVERSAL TRANSVERSE MERCATOR GRID  
ZONE 8

Copies may be obtained from the Map Distribution Office, Department of Mines and Technical Surveys, Ottawa.

- REFERENCE**
- Road and buildings.....
  - Road not well travelled.....
  - Trail and winter road.....
  - Church.....
  - Rail office.....
  - Lake and stream (position approximate).....
  - Fall and rapid.....
  - Sand or gravel.....
  - Contours (interval 500 feet).....
  - Contours (position approximate).....
  - Height in feet above Mean sea level..... 2600'
  - Mine.....
- Published 1950. Previous edition 1941.  
Surveys and Topography by the Topographical Survey, 1937.  
Reprinted with corrections at the Surveys and Mapping Branch, Ottawa, 1950.  
Approximate magnetic declination 34°30' East.  
The declination of the compass needle is decreasing 4 minutes annually.  
Converted from 1:253,440 to 1:250,000 by the Surveys and Mapping Branch.

**MAYO**  
YUKON TERRITORY

Scale 1:250,000  
1 Inch to 4 Miles Approximately



INDEX TO ADJACENT SHEETS SHEET 105 M  
EDITION 2 ASE