

Inter-Office Letter

COMPANY		DATE September 24th, 1969
FROM:	TO:	
SUBJECT:	014728	
		ATTN. OF:

George Johnny Gossan - 105-M-3

Gossan found by George Johnny while working for Hess OEX crew out of Big Kalzas Lake August 4th, 1969. Assays of gossan material reported to run 4% lead. Limited follow-up carried out in September, 1969, by Hugo Brodell. Results of this work not known as of September 24th, 1969.

J. S. Brock



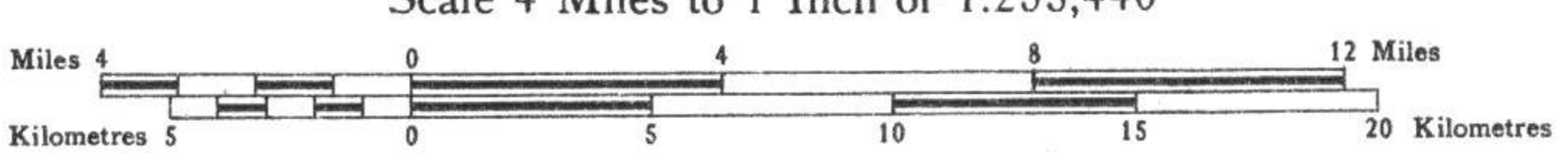
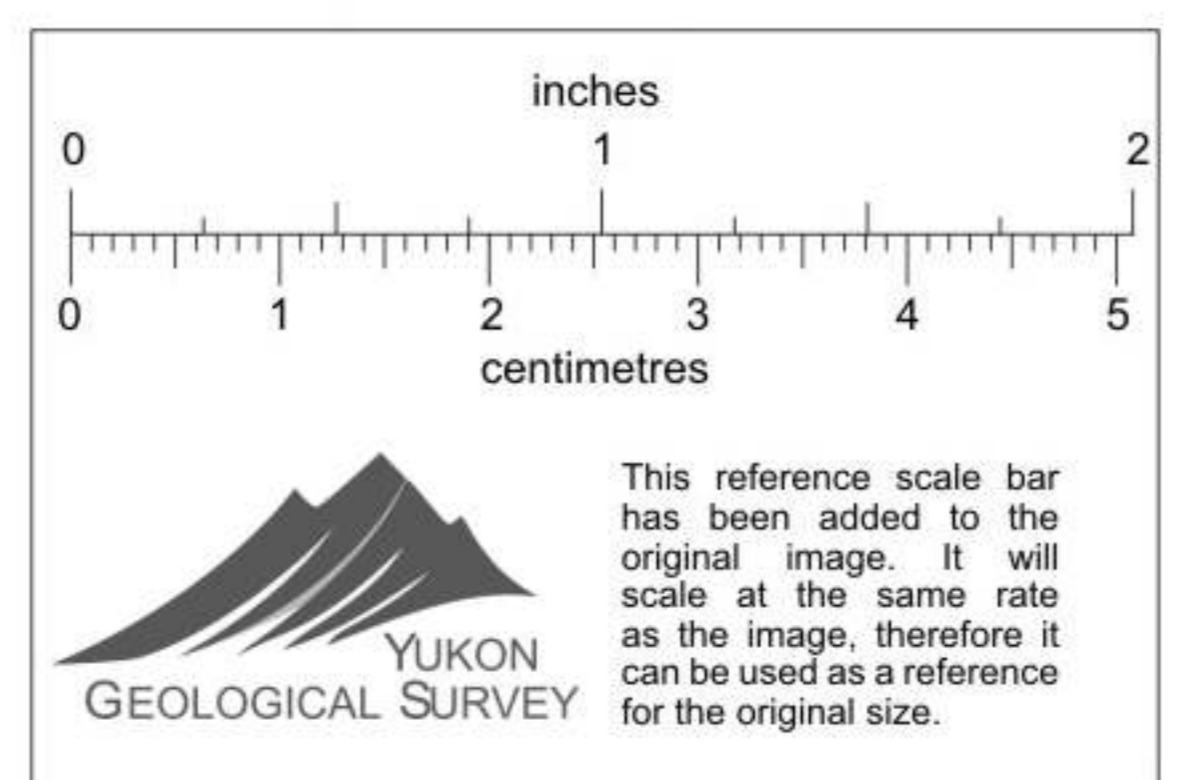
McQuesten 115 P

approx location of
Gossan located by
G. H. Johnny
~ 4000 ft. long.

Copies may be obtained from the Map Distribution Office,
Department of Mines and Technical Surveys, Ottawa.

REFERENCE

Road and buildings.....	—
Road not well travelled.....	—
Trail and winter road.....	—
Church.....	—
Post office.....	—
Lake and stream (position approximate).....	—
Fall and rapid.....	—
Sand or gravel.....	—
Contours (interval 500 feet).....	—
Contours (position approximate).....	—
Height in feet above Mean sea level.....	2000'
Mine.....	—

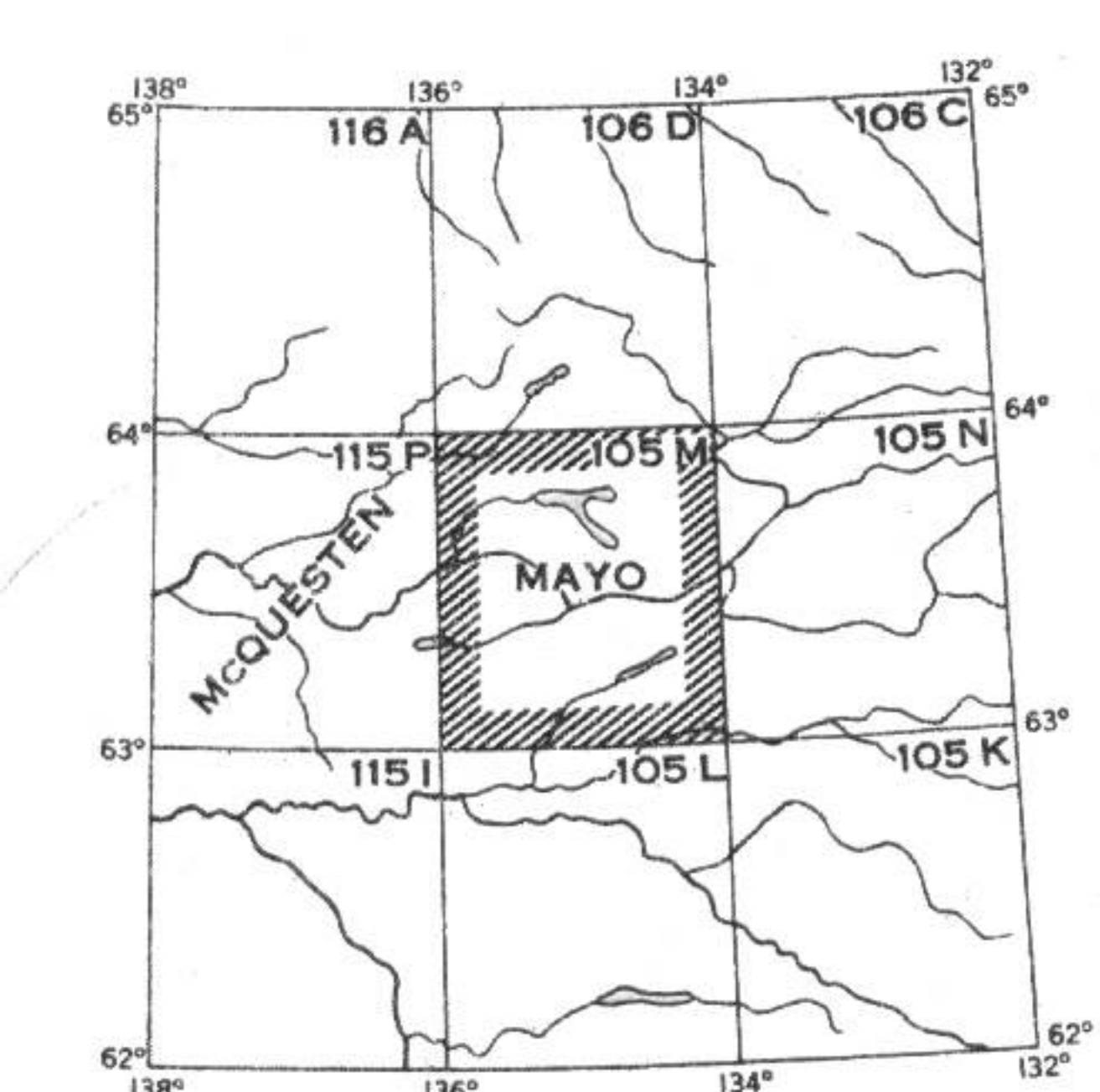


MAYO
YUKON TERRITORY

Scale 4 Miles to 1 Inch or 1:253,440

Published 1950. Previous edition 1941.
Surveys and topography by the Topographical Survey, 1937.
Reprinted with corrections at the Surveys and Mapping Branch, Ottawa, 1950.
Approximate magnetic declination 34°30' East.
The declination of the compass needle is decreasing 4 minutes annually.

Price 25 cents



INDEX TO ADJACENT SHEETS SHEET 105 M