

Report on GEOCHEMICAL SURVEY ON  
ARGENT 1-8 CLAIMS 10 Mi.W of ELSA  
SHEET 105-M-13 (MT. HALDANE)  
Lat.  $63^{\circ}56'N.$ , LONG.  $135^{\circ}49'W.$

by A.E. AHO

June 30, 1963 - Aug.1, 1963

105 M 13

014767

TABLE OF CONTENTS

|                                   | Page       |
|-----------------------------------|------------|
| Report on Argent Soil Sample Grid | 1          |
| Geologic Map of Argent Claim      |            |
| Group Showing Soil Sample Grid    | Back Cover |

Report On Argent  
Geochemical Soil Sample Grid

Soil samples were collected from a grid situated on Argent No. 3 and Argent No. 4 Mineral Claims (see map). A two hundred (200) foot line spacing and a fifty (50) foot sample interval was employed, with a total of about forty-five (45) samples being taken. The sampling was done by Murray O. Hampton and John Brock in August, 1963. Three days were spent on sampling preparation and analyzing for mercury.


The area is not well suited to geochemical soil sampling techniques due to the irregular topography and resulting variations in soil types. Part of the grid is on the talus with a very little poorly developed soil. Numerous depressions occur on the grid and all have soil which has a very high organic content.

The 45 samples were prepared, dried, crushed, sieved, and tested with the Lemaire Mercury Detector. The results of the mercury analysis were erratic and inconclusive. The samples have not been tested by any other geochemical method at time of writing. However, when tested by a method unaffected by organic material useful results might be obtained.

Because of the erratic inconclusive results, the values obtained have not been plotted and only the outline of the grid areas covered is indicated on the accompanying map. The prepared samples have been retained for further testing for Pb, Zn and Cu but this has not yet been done.

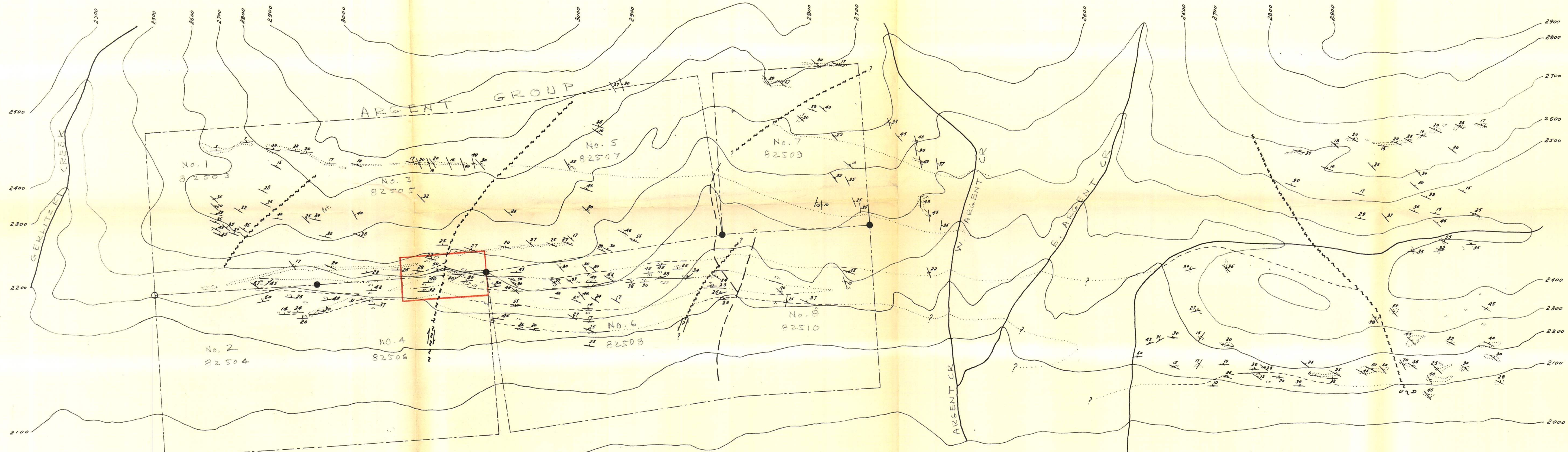
Total costs of this phase of work on the Argent claims is estimated to be about \$120.00

Respectfully Submitted,

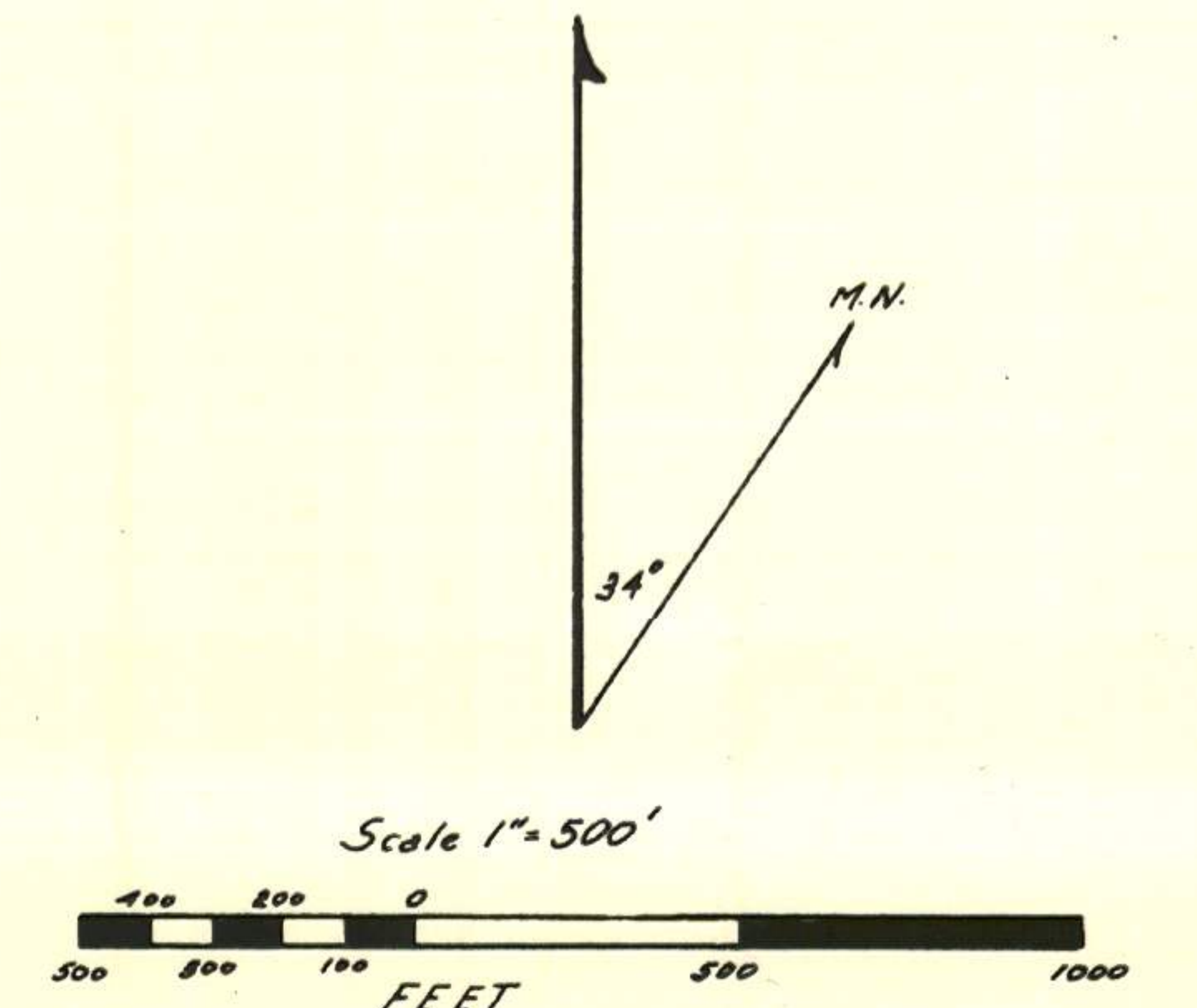


Dr. A.E. Aho

# GEOLOGIC MAP OF THE ARGENT GROUP

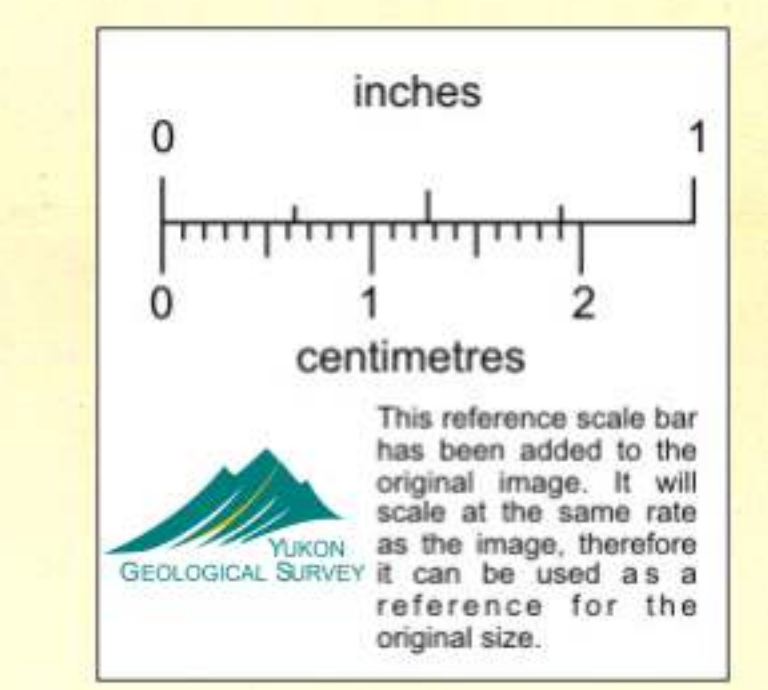


Geochemical Soil Sample Grid  
outlined in red —



## LEGEND

- Dark grey volcanic
- Biotite lamprophyre
- Rhyolite porphyry
- Grey schist
- Limestone
- Greenish schist
- Grey quartzite
- Outcrop
- Geologic contact defined
- Geologic contact approximate
- Dip/strike of bedding foliation
- Fault
- Creek indefinite
- Creek intermittent
- Claimpost accurate
- Claimpost approximate



Base map enlarged from 1:50,000 scale maps of  
Dept. of Mines and Technical Surveys.  
Map & Geology by D. Tempelman-Kluit.