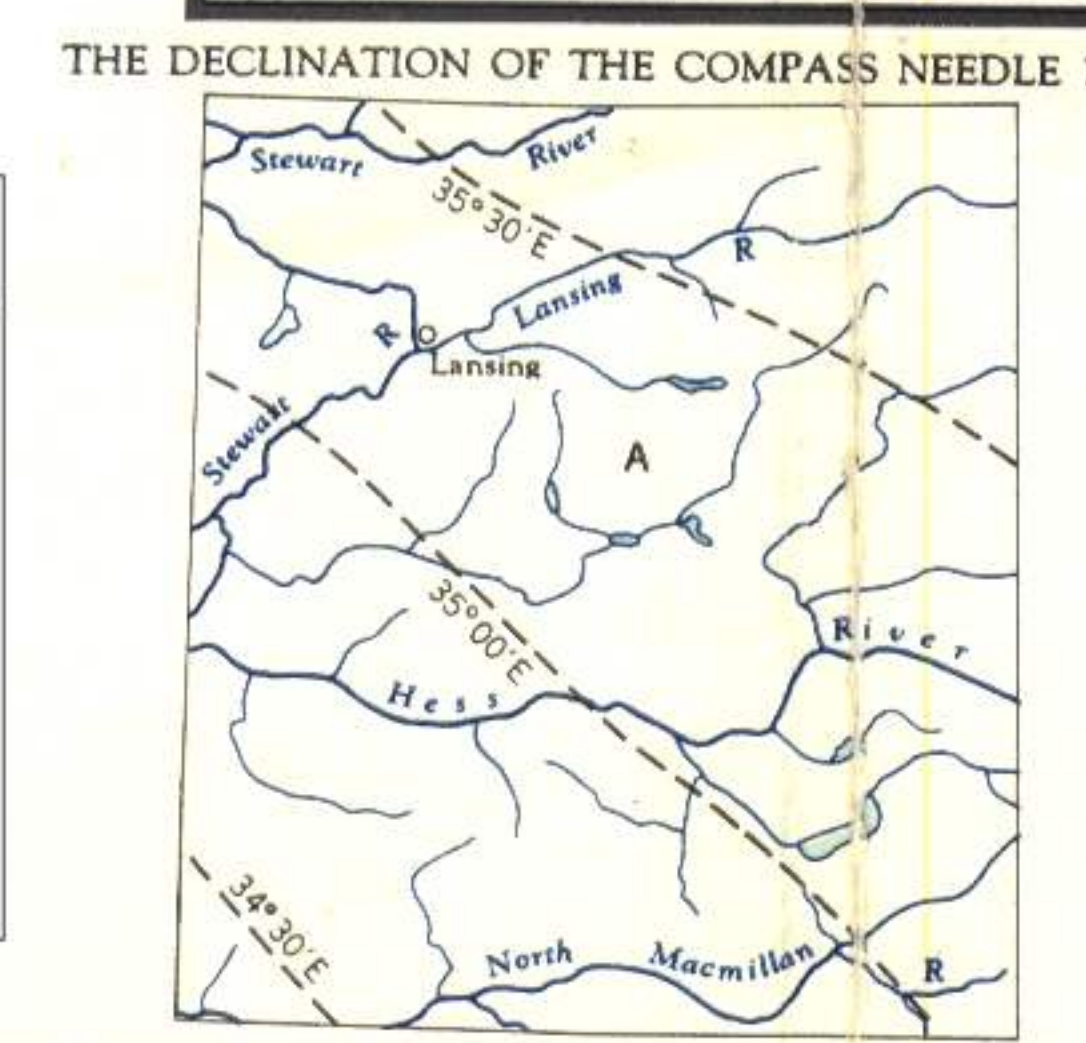
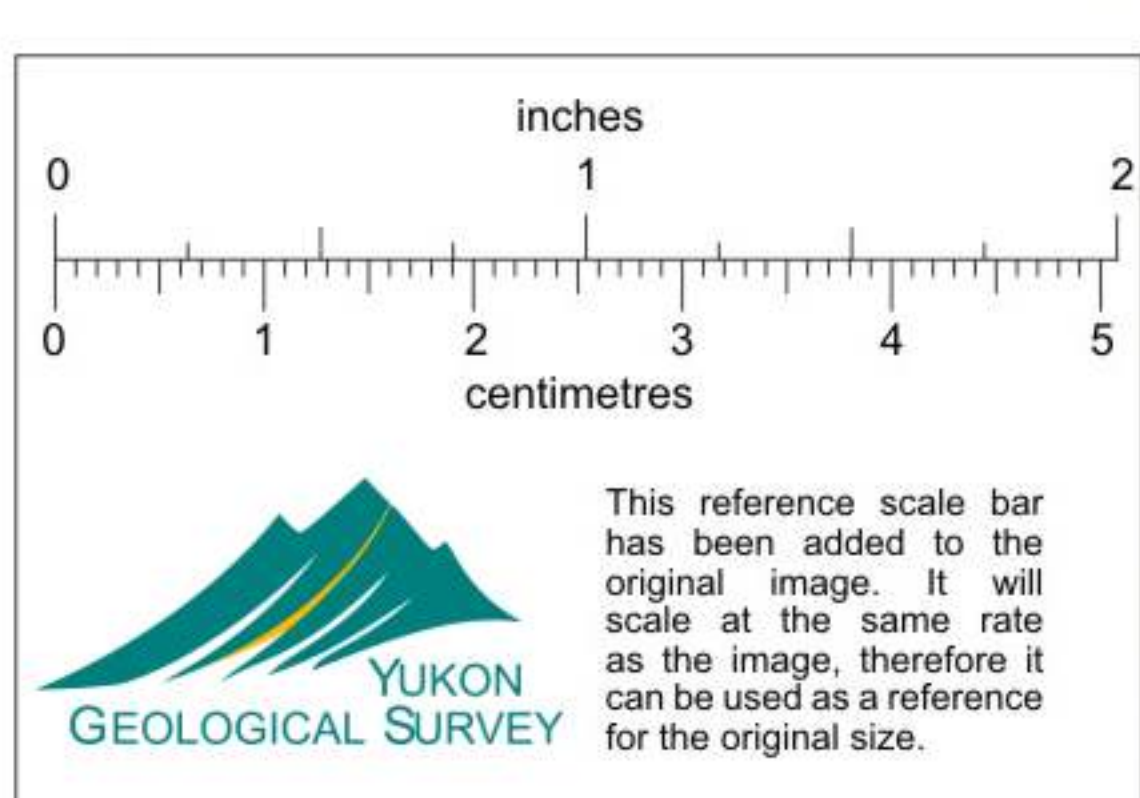
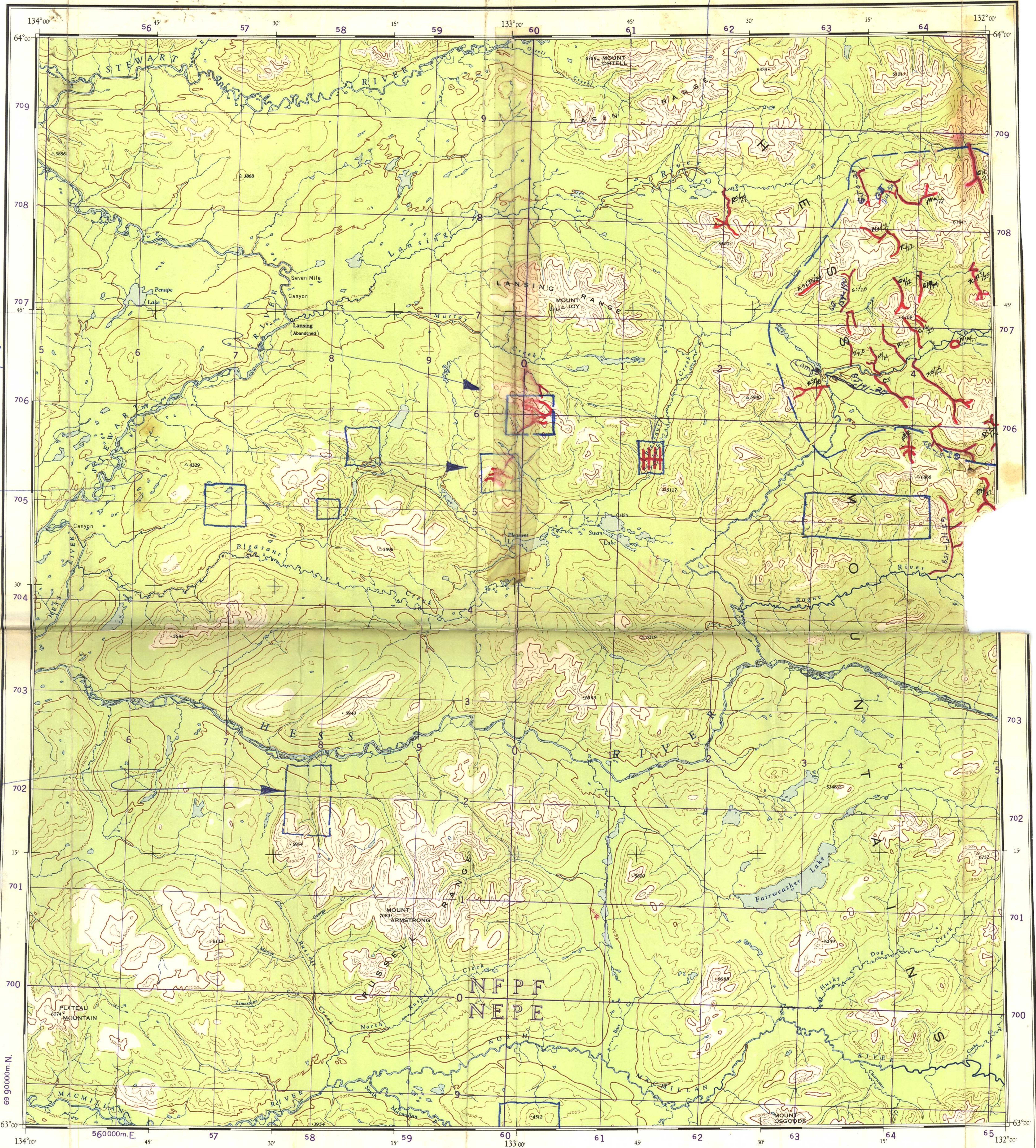


Geochem Anomaly #90
HESS RIVER AREA

Geochem Anomalies
94, 95, 96
HESS RIVER AREA
- contour soil sampling near the headwaters of south-flowing stream
- silt sampling of the north-flowing drainage
- detailed geological mapping of area

Geochem Anomalies
102
HESS RIVER AREA
- contour soil sampling
- stream sediment check sampling
- detailed geological mapping of area

Geochem Anomalies
34 & 35
HESS RIVER AREA
- soil sample profiles on either bank of stream in the immediate vicinity of anomaly



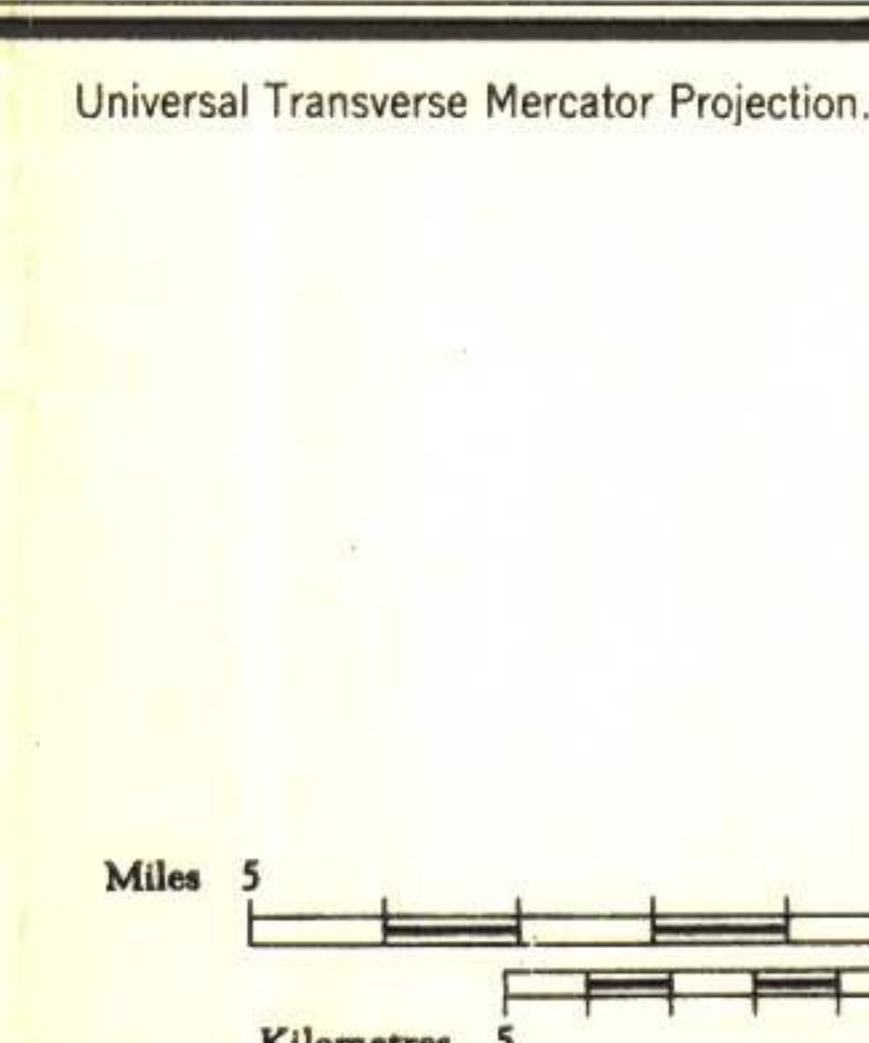
Produced by the Surveys and Mapping Branch, Dept. of Mines and Technical Surveys, 1954, from air photographs taken in 1949. Printed by the Army Survey Est., R.C.E., Dept. of National Defence, 1955.

Universal Transverse Mercator Projection.

Contour interval 500 Feet
All Elevations in Feet above Mean Sea Level.
North American Datum 1927.

REFERENCE

Wagon or Winter Road	---
Trail or Portage
Village or Settlement	○
Post Office	□
Building or Cabin	■
Horizontal Control Point	+
Astronomical Position	⊙
Spot Elevation, (in feet)	▲



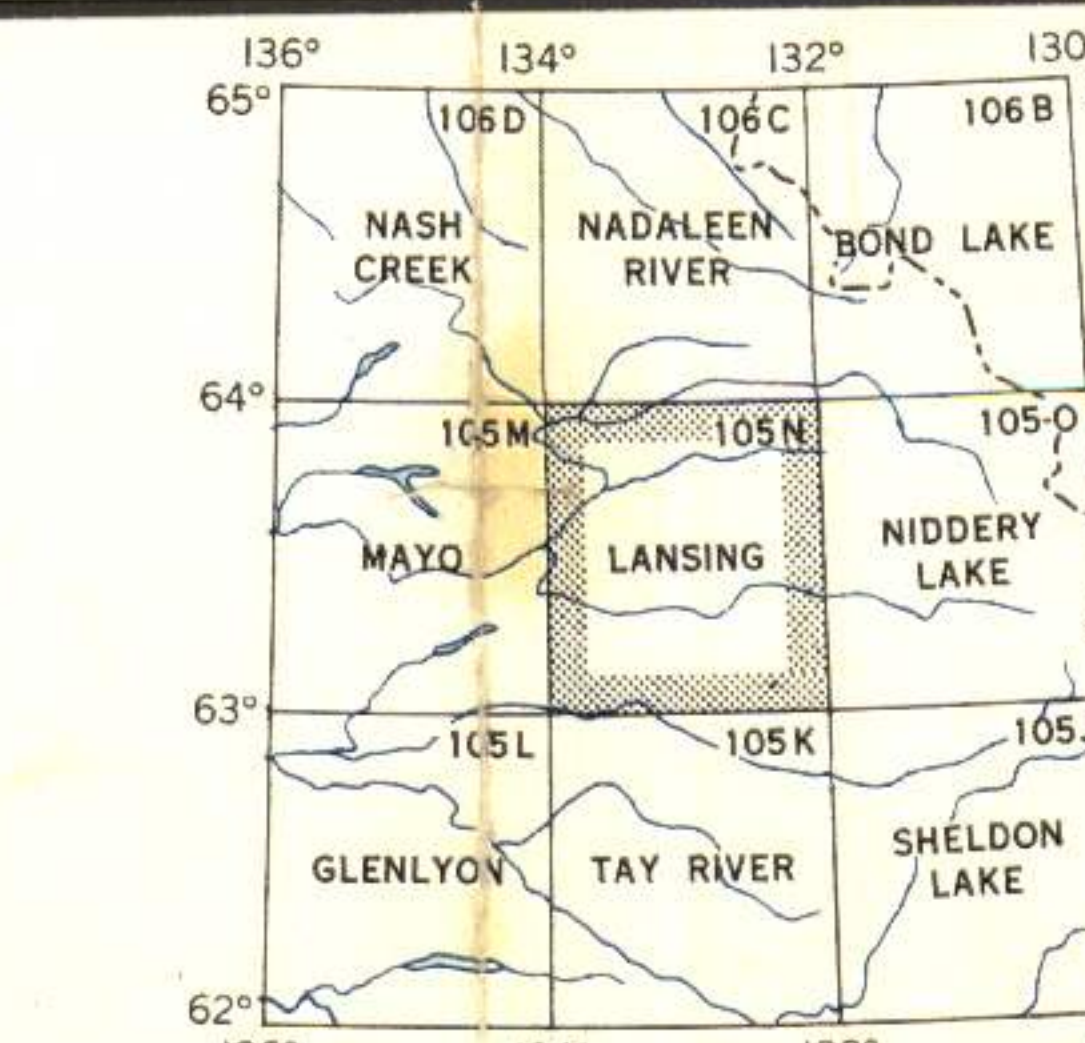
LANSING
YUKON TERRITORY

Scale 1:250,000
1 Inch to 4 Miles Approximately

105 N

REFERENCE

Contours, Elevation
Contours, Depression
Contours, Approximate
Stream, Intermittent or Dry
Rapids and Falls
Marsh or Swamp
Sand, Gravel or Mud
Wooded Areas



014886