

- 22, 40, 58, 366
- 30, 35, 54, 322
- 18, 40, 16, 160
- 30, 40, 42, 408
- 18, 25, 16, 88
- 26, 35, 34, 250
- 36, 20, 54, 112
- 18, 25, 12, 88
- 40, 25, 36, 358
- 36, 30, 22, 620
- 46, 30, 60, 398
- 26, 30, 42, 180
- 18, 40, 52, 130
- 18, 40, 40, 88
- 22, 40, 58, 218
- 30, 25, 40, 240
- 46, 40, 120, 720
- 46, 25, 42, 422
- 18, 30, 66, 250
- 26, 25, 66, 340
- 26, 30, 46, 282
- 40, 45, 74, 534
- 30, 30, 66, 358 (SITE)
- 36, 40, 68, 270
- 65, 35, 32, 270
- 56, 30, 50, 322
- 60, 30, 54, 308
- 46, 35, 74, 400
- 18, 40, 62, 190 (SITE)
- 40, 35, 116, 250
- 26, 26, 66, 248
- 26, 25, 54, 300
- 22, 35, 46, 210
- 36, 35, 46, 564
- 36, 48, 100, 322
- 36, 40, 70, 416
- 
- 18, 40, 52, 190
- 18, 20, 82, 112
- 26, 50, 84, 248
- 18, 35, 46, 160
- 30, 35, 44, 258
- 18, 30, 66, 130
- 12, 35, 54, 120
- 36, 55, 110, 358
- 26, 25, 70, 258

015114

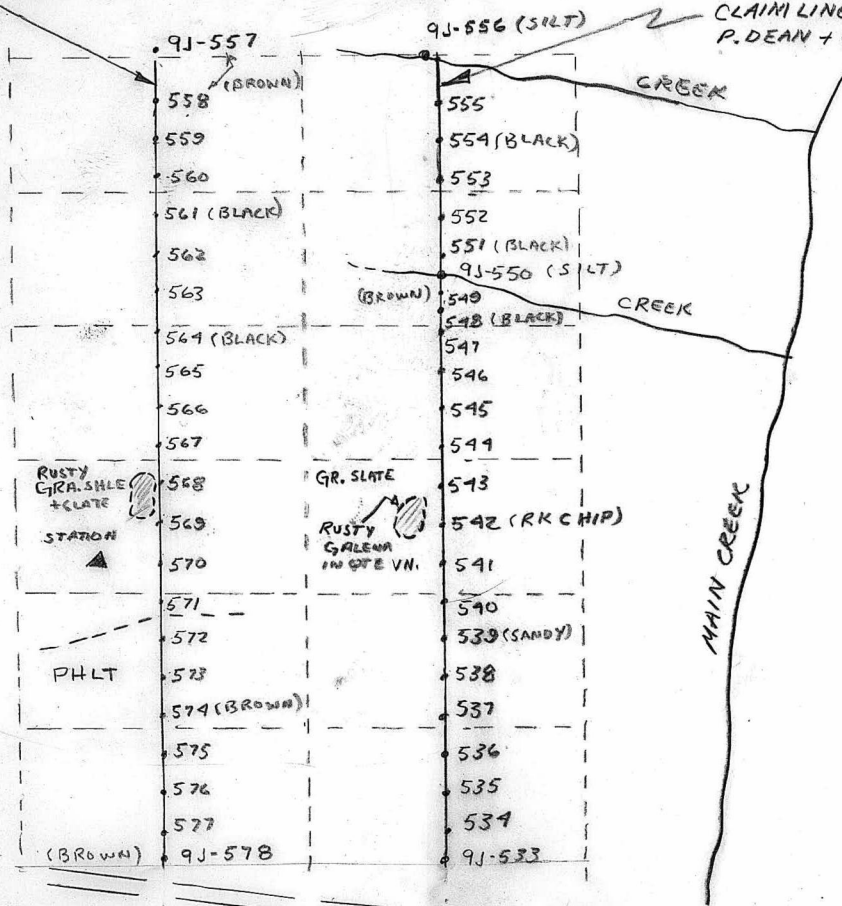
# TAY RIVER REGION

SOIL TRAVERSE (SCALE 1" = 200')



CLAIM LINE  
E. BUSS +  
W. HAMILTON

CLAIM LINE FOR  
P. DEAN + G. DENTON



## RK TYPES:

- PRE DOMINANTLY SHALE (GR. + CHERT) SLATE + PHLT
- OUTCROP THRU. OUT CLAIM LINES
- VERY LITTLE VISIBL MINERALIZATION

R. WELLS  
AUG 23, 1969  
MAP 105K04

14  
6  
9/8400  
20

Plotted on REK DETAIL  
9.

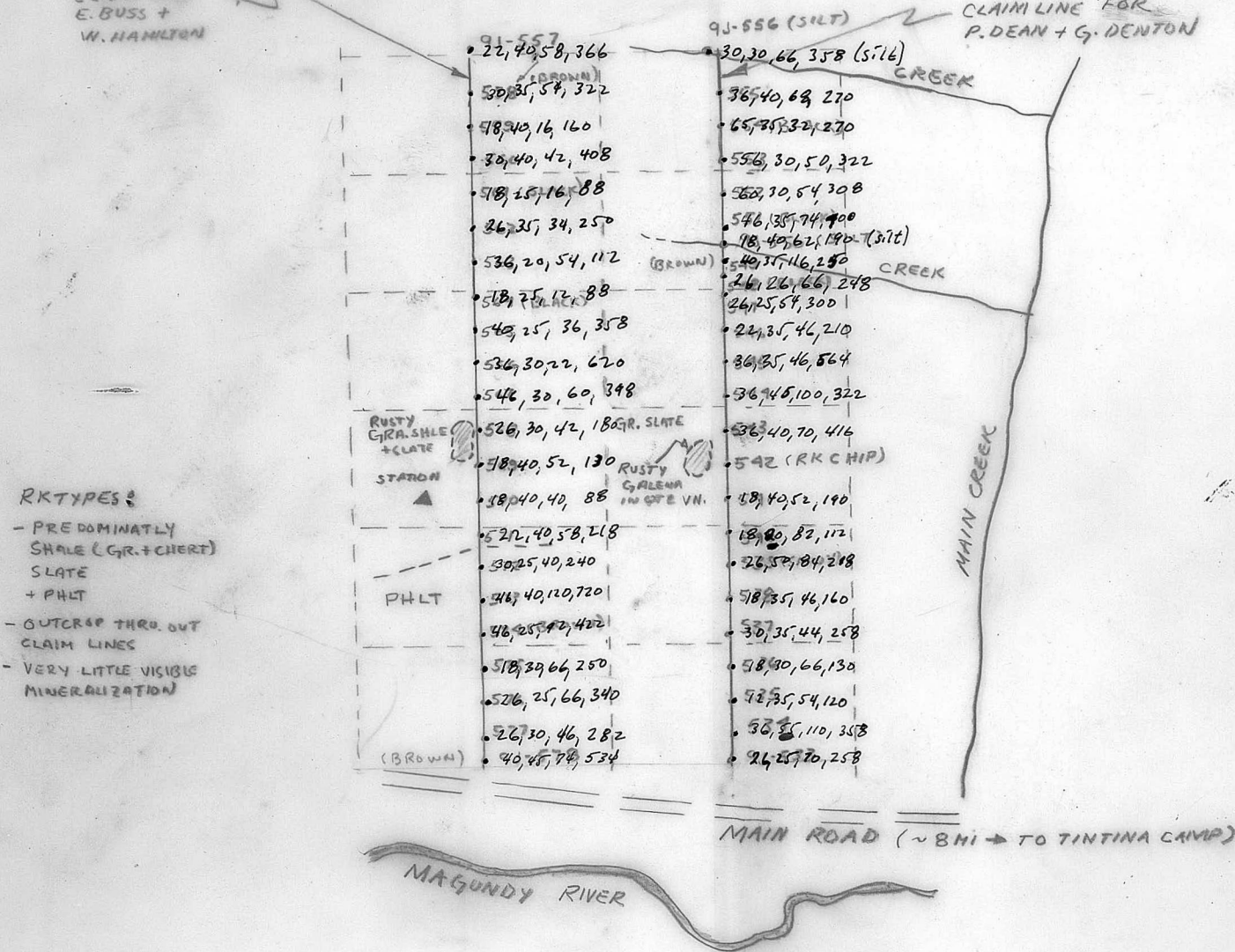
# TAY RIVER REGION

SOIL TRAVERSE (SCALE 1" = 200')



CLAIM LINE  
E. BUSS +  
W. HAMILTON

CLAIM LINE FOR  
P. DEAN + G. DENTON



## RK TYPES:

- PREDOMINATLY SHALE (GR. + CHERT)
- SLATE + PHLT
- OUTCRIP THRU OUT CLAIM LINES
- VERY LITTLE VISIBL MINERALIZATION

R. WELLS  
AUG 23, 1969  
MAP 105K04

14  
6  
4 | 8400  
20

Plotted on REK DETAIL  
eg

015114

Samples 519 60

TAY RIVER REGION

Wells  
Tran 577

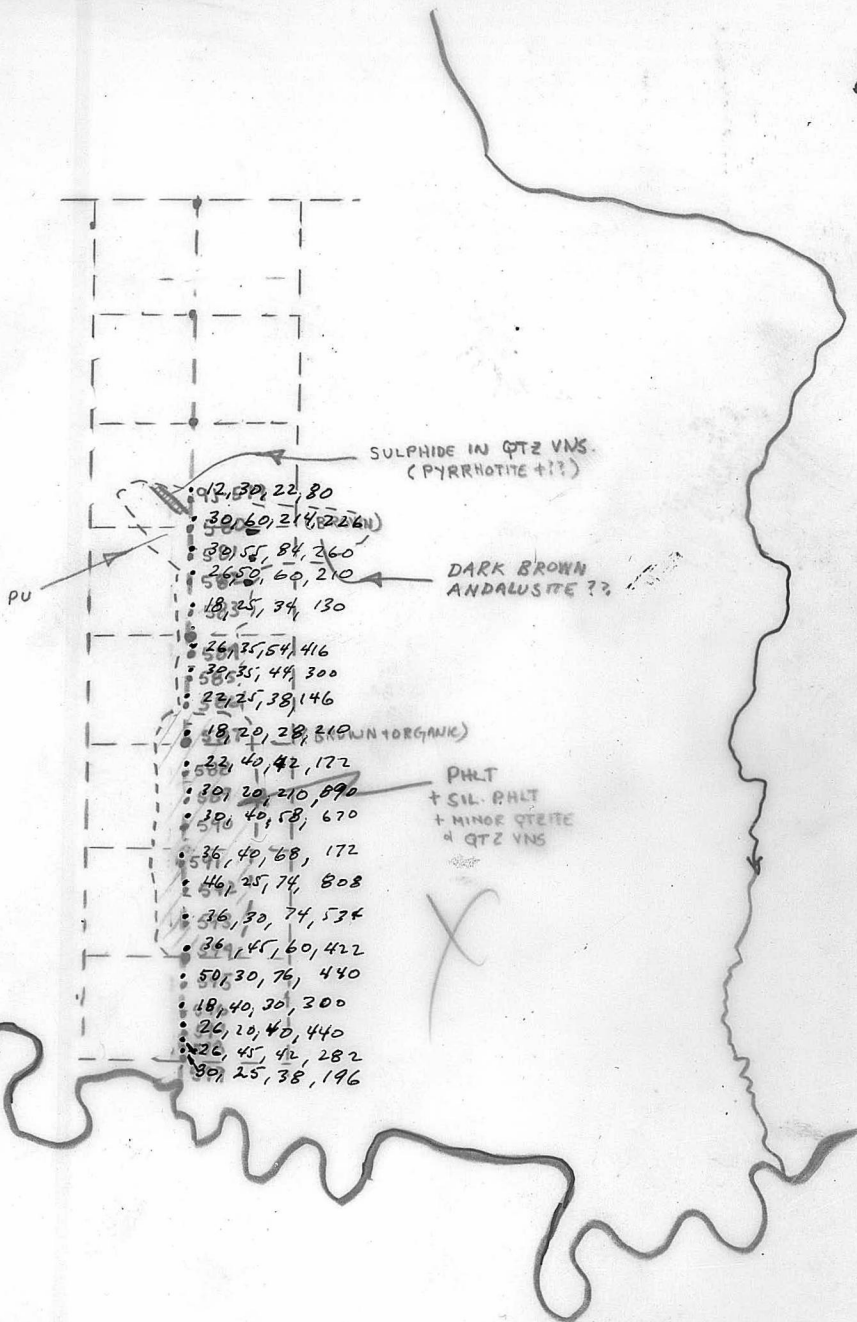


Aug 24/69

105 K09

A-12182-199

Finish Soil Sampling  
of REK CLAIM LINES



- 12, 30, 22, 80
- 30, 60, 214, 226
- 30, 55, 84, 260
- 26, 50, 60, 210
- 18, 25, 34, 130
- 26, 35, 54, 416
- 30, 35, 44, 300
- 22, 25, 38, 146
- 18, 20, 28, 210
- 22, 40, 42, 172
- 30, 20, 210, 890
- 30, 40, 58, 670
- 36, 40, 68, 172
- 46, 25, 74, 808
- 36, 30, 74, 534
- 36, 45, 60, 422
- 50, 30, 76, 440
- 18, 40, 30, 300
- 26, 20, 40, 440
- 26, 45, 42, 282
- 30, 25, 38, 146

Samples 579 to

# TAY RIVER REGION

Wells  
Transect 77

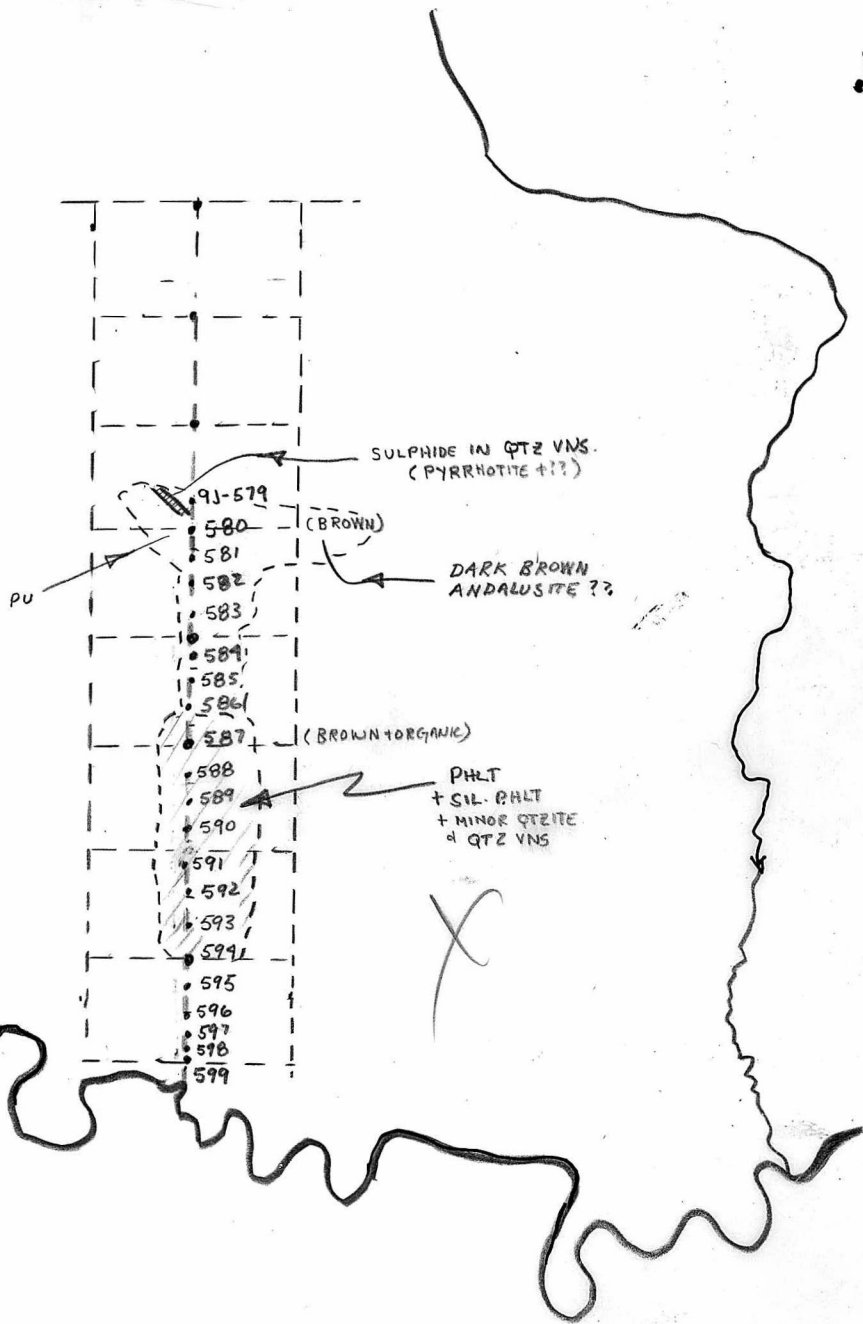


Aug 24/69

105 K04

A-12/82-199

Finish Soil Sampling  
of REK CLAIM LINES



105 K4  
Aug 22/69



Geology of  
Rek claims  
Godwin, Dean

Samples 9A148 to 9A175

A12182-199

A12182-199

Magundy, R

DISPLACEMENT

1517  
1518  
1519  
1520  
1521  
1522  
1523  
1524  
1525  
1526  
1527  
1528  
1529  
1530  
1531  
1532  
1533  
1534  
1535  
1536  
1537  
1538  
1539  
1540  
1541  
1542  
1543  
1544  
1545  
1546  
1547  
1548  
1549  
1550  
1551  
1552  
1553  
1554  
1555  
1556  
1557  
1558  
1559  
1560  
1561  
1562  
1563  
1564  
1565  
1566  
1567  
1568  
1569  
1570  
1571  
1572  
1573  
1574  
1575  
1576  
1577  
1578  
1579  
1580  
1581  
1582  
1583  
1584  
1585  
1586  
1587  
1588  
1589  
1590  
1591  
1592  
1593  
1594  
1595  
1596  
1597  
1598  
1599  
1600  
1601  
1602  
1603  
1604  
1605  
1606  
1607  
1608  
1609  
1610  
1611  
1612  
1613  
1614  
1615  
1616  
1617  
1618  
1619  
1620  
1621  
1622  
1623  
1624  
1625  
1626  
1627  
1628  
1629  
1630  
1631  
1632  
1633  
1634  
1635  
1636  
1637  
1638  
1639  
1640  
1641  
1642  
1643  
1644  
1645  
1646  
1647  
1648  
1649  
1650  
1651  
1652  
1653  
1654  
1655  
1656  
1657  
1658  
1659  
1660  
1661  
1662  
1663  
1664  
1665  
1666  
1667  
1668  
1669  
1670  
1671  
1672  
1673  
1674  
1675  
1676  
1677  
1678  
1679  
1680  
1681  
1682  
1683  
1684  
1685  
1686  
1687  
1688  
1689  
1690  
1691  
1692  
1693  
1694  
1695  
1696  
1697  
1698  
1699  
1700  
1701  
1702  
1703  
1704  
1705  
1706  
1707  
1708  
1709  
1710  
1711  
1712  
1713  
1714  
1715  
1716  
1717  
1718  
1719  
1720  
1721  
1722  
1723  
1724  
1725  
1726  
1727  
1728  
1729  
1730  
1731  
1732  
1733  
1734  
1735  
1736  
1737  
1738  
1739  
1740  
1741  
1742  
1743  
1744  
1745  
1746  
1747  
1748  
1749  
1750  
1751  
1752  
1753  
1754  
1755  
1756  
1757  
1758  
1759  
1760  
1761  
1762  
1763  
1764  
1765  
1766  
1767  
1768  
1769  
1770  
1771  
1772  
1773  
1774  
1775  
1776  
1777  
1778  
1779  
1780  
1781  
1782  
1783  
1784  
1785  
1786  
1787  
1788  
1789  
1790  
1791  
1792  
1793  
1794  
1795  
1796  
1797  
1798  
1799  
1800  
1801  
1802  
1803  
1804  
1805  
1806  
1807  
1808  
1809  
1810  
1811  
1812  
1813  
1814  
1815  
1816  
1817  
1818  
1819  
1820  
1821  
1822  
1823  
1824  
1825  
1826  
1827  
1828  
1829  
1830  
1831  
1832  
1833  
1834  
1835  
1836  
1837  
1838  
1839  
1840  
1841  
1842  
1843  
1844  
1845  
1846  
1847  
1848  
1849  
1850  
1851  
1852  
1853  
1854  
1855  
1856  
1857  
1858  
1859  
1860  
1861  
1862  
1863  
1864  
1865  
1866  
1867  
1868  
1869  
1870  
1871  
1872  
1873  
1874  
1875  
1876  
1877  
1878  
1879  
1880  
1881  
1882  
1883  
1884  
1885  
1886  
1887  
1888  
1889  
1890  
1891  
1892  
1893  
1894  
1895  
1896  
1897  
1898  
1899  
1900  
1901  
1902  
1903  
1904  
1905  
1906  
1907  
1908  
1909  
1910  
1911  
1912  
1913  
1914  
1915  
1916  
1917  
1918  
1919  
1920  
1921  
1922  
1923  
1924  
1925  
1926  
1927  
1928  
1929  
1930  
1931  
1932  
1933  
1934  
1935  
1936  
1937  
1938  
1939  
1940  
1941  
1942  
1943  
1944  
1945  
1946  
1947  
1948  
1949  
1950  
1951  
1952  
1953  
1954  
1955  
1956  
1957  
1958  
1959  
1960  
1961  
1962  
1963  
1964  
1965  
1966  
1967  
1968  
1969  
1970  
1971  
1972  
1973  
1974  
1975  
1976  
1977  
1978  
1979  
1980  
1981  
1982  
1983  
1984  
1985  
1986  
1987  
1988  
1989  
1990  
1991  
1992  
1993  
1994  
1995  
1996  
1997  
1998  
1999  
2000

ROAD

105 K 4  
Aug. 22/64  
Geology around Rek. Cl.

G. Pearce



Samples 1PS62 to 1122

Photo A12182-199

A12182-199

Claim #1 SPEK5  
(at claim line)

5300

5000

2000

Boer pond

Spring



105 K4  
Aug 22/69

Geology of  
Rek claims  
Godwin, Dean

Samples 9A148 to 9A175

A12182-199

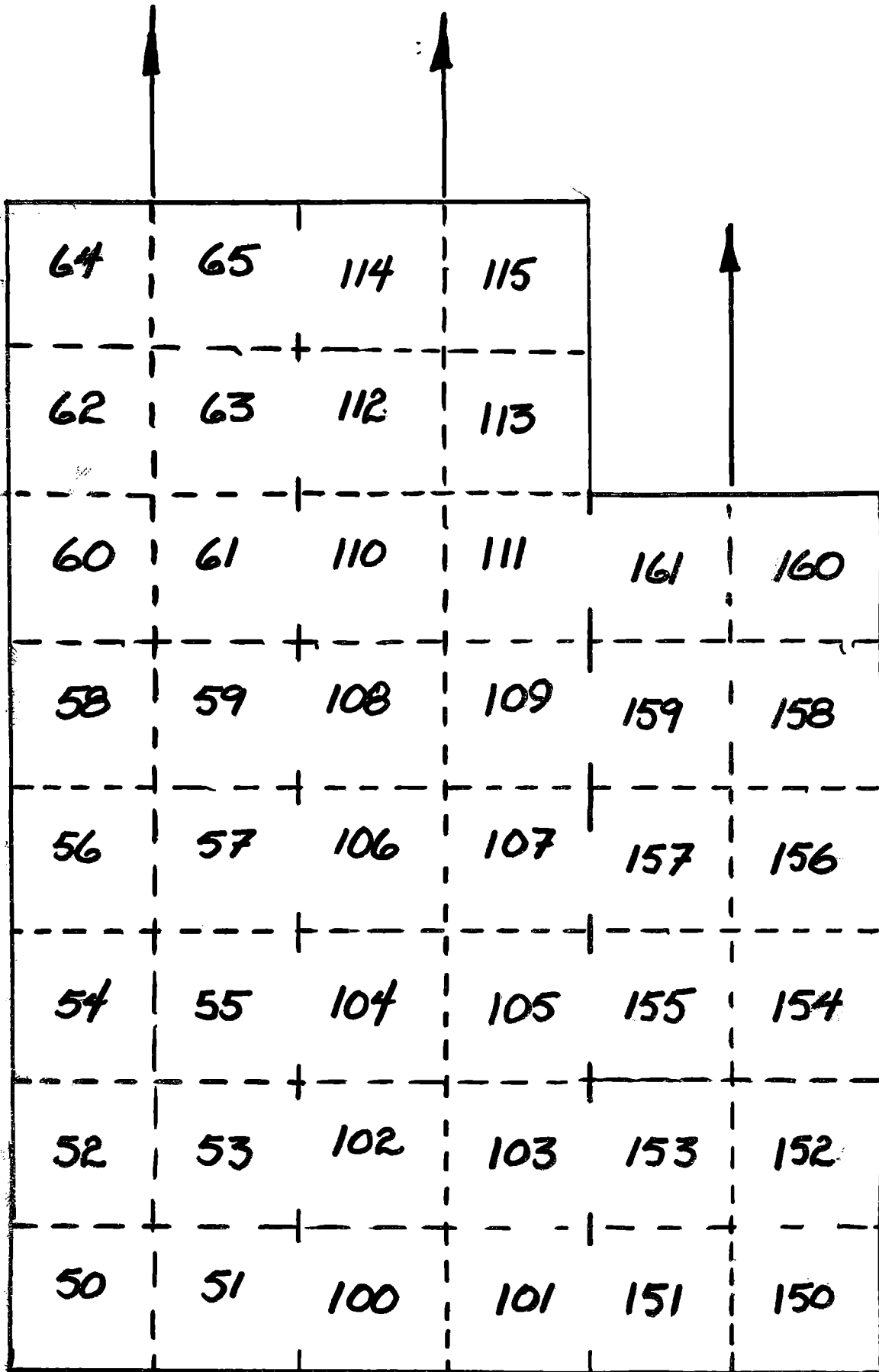
A12182-199





REK CLAIM  
GROUP

Scale 1"=1500'



Strong X fracture  $\approx 165/54W$   
avg 1/16 inch. many  
containing thin chl. anhyd.  
stringers.

200 - dk grey ls.

1000 - dk grey "silky" phyllite  
Some intercalated - cherty  
argill. ls and less 1"  
hematite stained gl. stringers.  
(concordance #).

$\approx 40/40'$

1300 - steep SW facing ol.

black argill. ls with grey  
platy ls layers capping hill  
highly carbonated ls.

crenelations in phyllite  
horizontal  $\swarrow$  55

this is fold axis (1<sup>st</sup> phase)  
See sketch

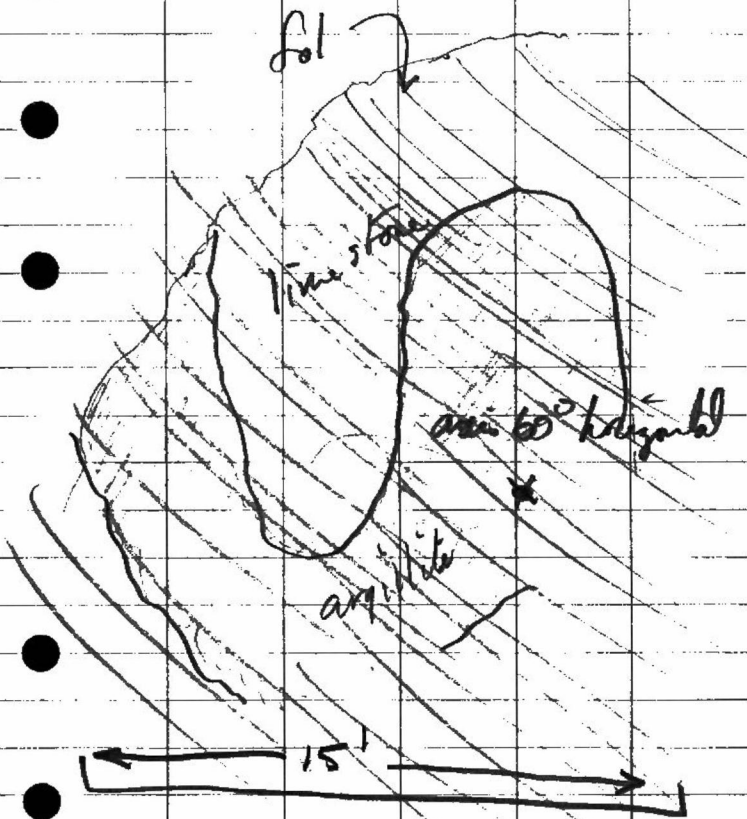
fol

1/2 in stone

axis 60° horizontal

amplitude

15'



2000' pred. argillite & phyllite  
- some ls. over last 600'  
new soil sample.

9P563

2300 - knotted Sericite sch.  
Small 1-2mm - probably  
xls - andalusite?

2800 - knotted phyllitic sch  
E60/40N

3300 Still knotted phyll. sch.  
just below (10') hit N.S.  
Claim line: (Flag #6)

Turned N walked 200' - hit  
claim corner (Post #1  
REK 57 etc).

Rek claims, Aug 22/69  
G.H.K.P.

0100 Brq. 315°  
dr. above C.N.T. sta.

black ls. (platy)  
E 60 / 24 N.

at. sta. black slate.  
bedding in ls. irreg &  
not coincident with fol.

400 Brq. 315° -

ls & limy shale, also  
angular float of chert grit  
& fine conglom with ellipsoidal  
pyrite "pebbles" 1 cm.

Soil sample C horiz.

9P 562.

485 - Brq 315 -

Small exp. black cherty  
siltstone abundant & fine  
solid. specks, dissem E 55 / 45 N