

105K/S

015134

Aug 30

Geochem Worksheet  
1969

9x1

WIDE —

20

DEEP —

2

FAST — / SLOW

MED

~~FAST~~ fast

COLOUR OF  
SEDIMENT

BLUES

BROWN

GRAY

RED

9x1

gray

TIME 9.30

TIME 10

WIDE 20

gray

fast 2

9x2

20 FEET WIDE 2 DEEP

FAST TIME 10.30

9x3

gray

TIM 11 AM 9X4

Black FAST WATER  
20 FEET WAD 2 DEEP

BLACK TIME 11 30 9X5

20 FEET WAD 2 FEET D  
FAST

GRAY 9X6  
FAST WATER

40 FEET 3 FT DEER

TIME 1 PM

gray 20 FT 2 DEEP  
9X7

9X8 TIME 130 gray

20 WAD 3 DEEP

9X9 BLACK  
2 PM WATER 30 FT  
2 FT DEEP

aug 31 169 1 PM  
9X10 Water Creek 2 FT WIDE  
1 FT DEEP GRAY

No 9X11 Creek 2 FT 130  
1 FT DEEP GRAY FAST

9X12 Creek 2 FT 1 FT  
DEEP 2 PM GRAY FAST

9X13 BLACK Creek FAST  
2 FT 1 DEEP 230

9X14 BLACK CREEK  
2 FT 1 DEEP FAST TIME  
30

9X15 GRAY CREEK 4 FT  
MED TIME 3.30

9X16 GRAY WATER 50  
FAST TIME 4

SEP 1 1969

9X17 T. 1015 CREEK 2 FT WIDE  
MED

9X18 T. 1040 CREEK 2 F WIDE  
RUN MED

9X19 T. 11 CREEK 3 F WIDE MED

9X20 T. 1125 CREEK 2 F WIDE MED  
COLER SEDI BROWN

9X21 T. 1140 CREEK 2 F WIDE  
COLER. D. SEDI GRAY

9X22 T. 1165 CREEK 2 F. WIDE COLER  
OF SEDI GRAY

9X23 T. 1225 BLACK CREEK 2 F WIDE

9X24 T. 105 GRAY CREEK 5 WIDE  
2 DEP

9X25 T. 1140 GRAY CREEK 10 WIDE  
5 DEP RUNNING SLOW

Foot

SEP 1 169

TIME 10 15 creek 2 FT. wide BROWN 9X17

TIME 10 40 creek 2 FT wide BROWN RUNNING  
MED 9X18

9X19 TIME 11 AM CREEK 3 FT WIDE MED  
BROWN

9X20 TIME 11 25 ~~BROWN~~ CREEK 2 FEET WIDE

9X21 TIME 11 45. GRAY CREEK 2 FT WIDE

9X22 TIME 11 55 GRAY CREEK 4 FT WIDE 1 FT DEEP

9X23 TIME 12 25 BLACK

9X24 TIME 10 5 CREEK 5 FT WIDE 2 FT DEEP  
COLOR OF GRAY

9X25 TIME 1 40 CREEK 10 FT WIDE GRAY  
5 FT DEEP

9X26 TIME 2 10 CREEK 10 FT WIDE BROWN

9X27 TIME 2 30 Creek 10 FT WIDE GRAY 2 FT DEEP

9X28 TIME 3 AM CREEK 3 FT WIDE BROWN

9X29 TIME 3 45 CREEK 2 FT WIDE BLACK

9X30 TIME 4 15 CREEK 2 FT WIDE BLACK

9X31 TIME 4 30 CREEK 15 FT WIDE 2 FT. DEEP  
GRAY

9x26 TIME 210 CREEK 10 FT WIDE  
COLOR OF SEDI BROWN

9x27 T 230 CREEK 10 FT WIDE  
2 FT DEEP GRAY

9x28 T 3PM CREEK 3 FT WIDE  
COLOR BROWN

9x29 T 345 CREEK 2 FT WIDE  
BLACK

9x30 T 415 CREEK 2 FEET  
WIDE BLACK

9x31 T 430 CREEK 15 FT WIDE  
2 DEEP COLOR GRAY

9x32 -

SEP 21 1969

9X32 TIME 145 CREEK 2 FT WIDE  
COLOUR BLACK

9X33 TIME 215 CREEK 2 FT WIDE  
COLOUR GRAY

9X34 TIME 220 CREEK 2 FT WIDE  
COLOUR GRAY

9X35 TIME 245 CREEK 2 FT WIDE  
COLOUR GRAY

9X36 TIME 315 CREEK 4 FT WIDE  
COLOUR BLACK

9X37 TIME 345 CREEK 4 FT WIDE  
COLOUR BROWN

9X38 TIME 415 CREEK 5 FT WIDE  
COLOUR BLACK

9X39 TIME 430 CREEK 5 FT  
GRAY

9X40 TIME 445 CREEK 5 FT  
GRAY

Sept. 2

9252 Wide 2 ft  
Depth 1 ft  
Sed. Color Brown  
Med. Current

9253 Wide 4 FT  
Depth 1 FT  
Sed. Color Gray  
Med. Current

9254 Wide 15 FT  
Depth 1 ft  
Sed. Color Brown  
Med. Current

9255 Wide 10 FT  
Depth 1½ FT  
Sed. Color Gray  
Fast Current

9256 Wide 8 FT  
Depth 1 FT  
Sed. Color Gray  
Fast Current

Sept 2

9257	Wide	10	FT
	Depth	1	FT
	Seed Color		Gray
	Fast Current		

9258	Wide	10	FT
	Depth	1	FT
	Seed Color		Gray
	Fast Current		

9259	Wide	10	FT
	Depth	1 1/2	FT
	Seed Color		Gray
	Fast Current		

9260	Wide	10	FT
	Depth	2	FT
	Seed Color		Gray
	Fast Current		

9261	Wide	5	F
	Depth	1 1/2	F
	Seed Color		Gray
	Fast Current		

Sept 2

9462 Wide 5 FT  
Depth 1 FT  
Sed. Color Gray  
Med. Current

9463 Wide 5 FT.  
Depth 1 FT.  
Sed. Color Gray  
Med. Current

Water Sample

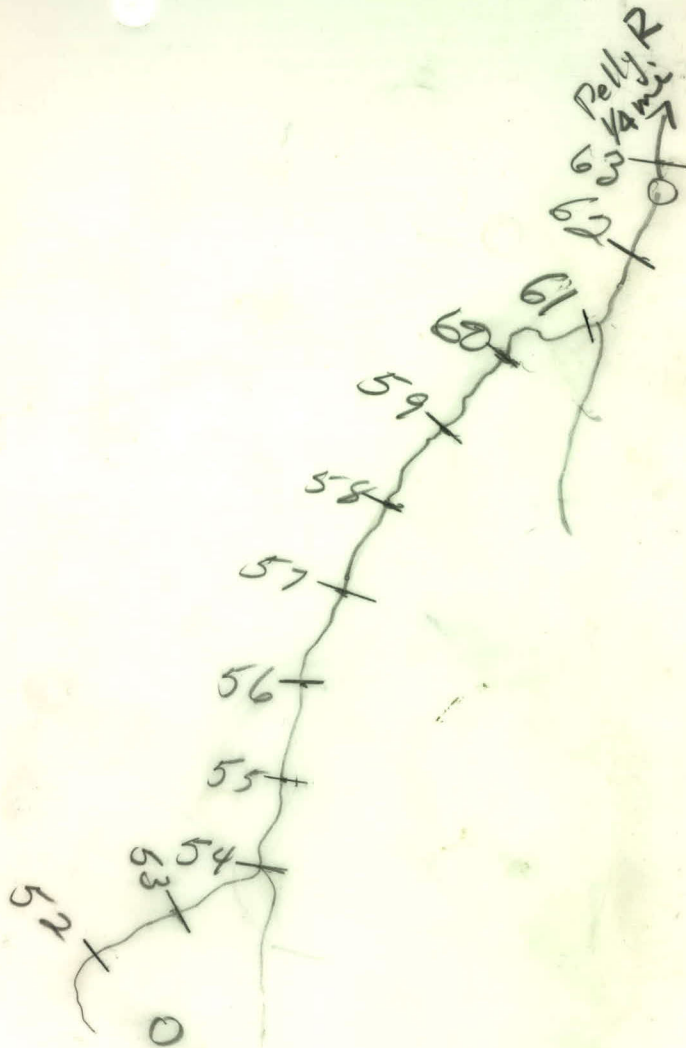
945 Wide 5 FT  
Depth 1 FT  
Med. Current

Sample No 9L52 to 9L63

Traverse #52  
Sept 2/69  
Livingston Johnson  
105K5



12192-126



105K5

Sample No 9X32 to 9X90

Traverse #51

Sept 2/69

Peter Fox

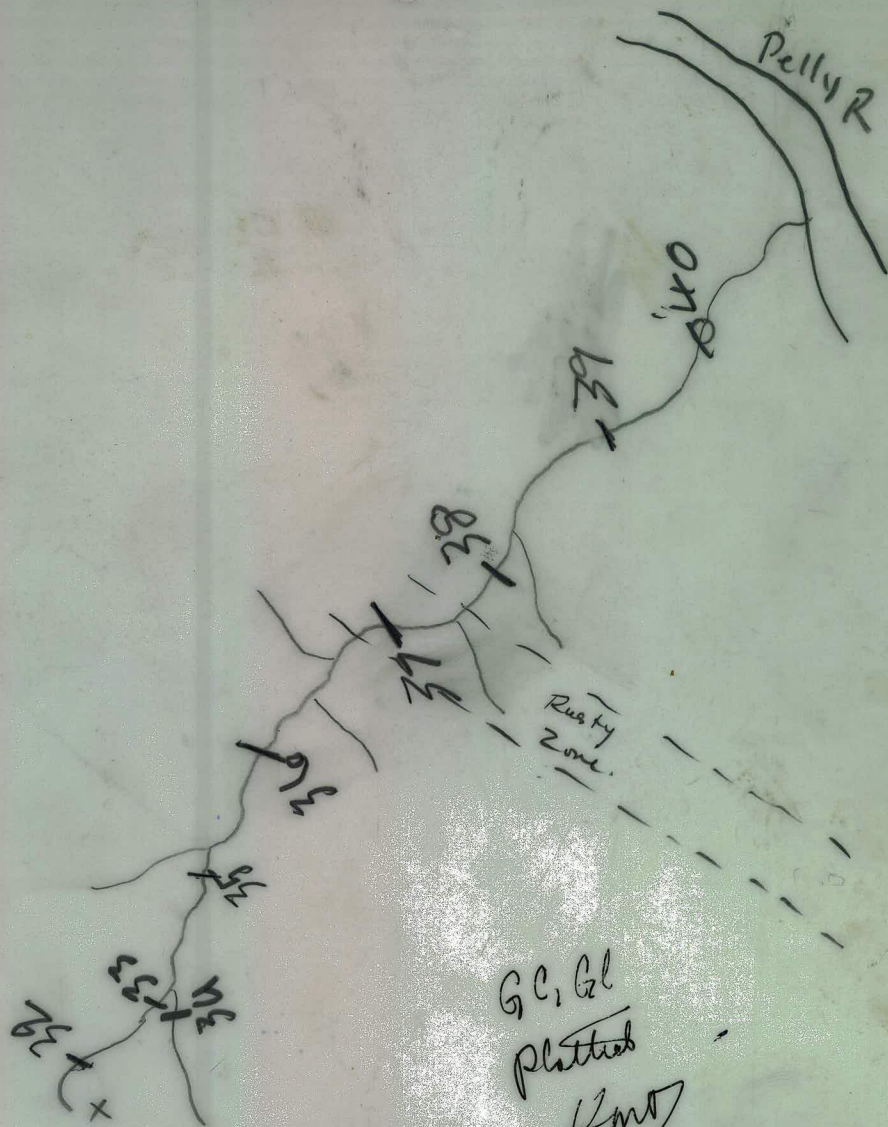
105K5

+

105L8



A12182-127



GC, G1  
Plotted  
KMD  
24/10/69

Sept 3

966 Water Sample

Width 5 FT

Depth 1 FT

Fast Current

967 Width 3 FT

Depth 6 in

Fast Current

Sept 3

9269

Width

3

FT

Depth

6

in

Seal. Color

Gray

Fast Current

9270

Width

5

FT

Depth

6

in

Seal. Color

Gray

Med. Current

9271

Width

2

FT

Depth

6

in

Seal. Color

Gray

Med Current



Traverse # 53

Linnyston Lake

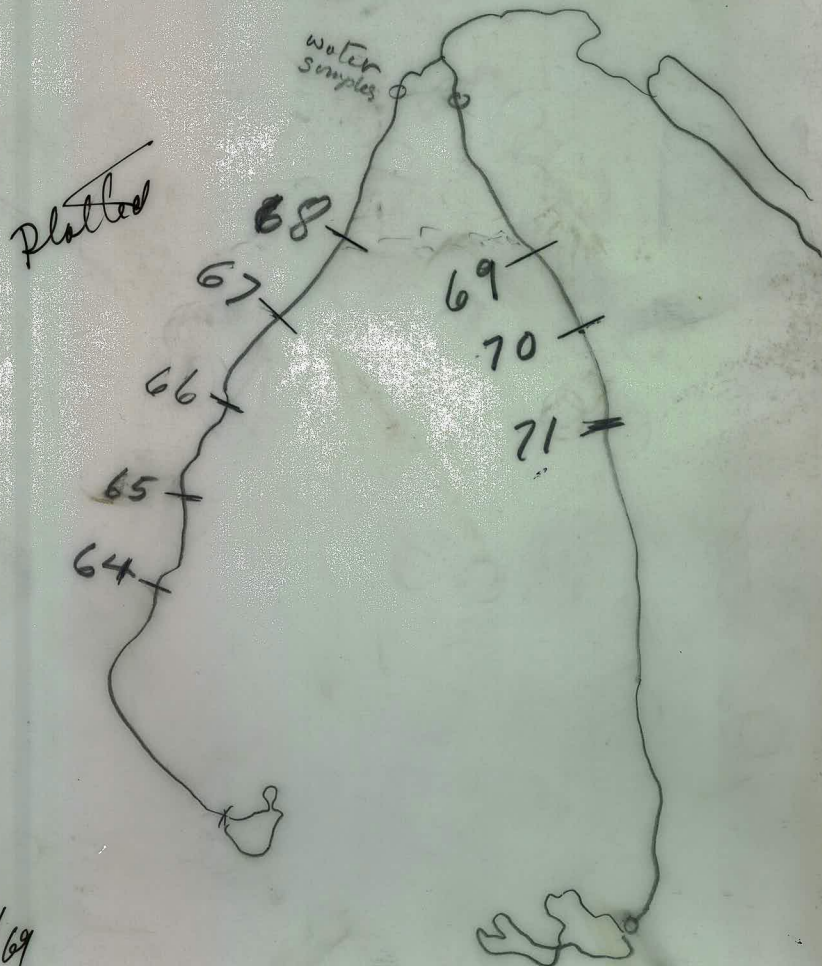
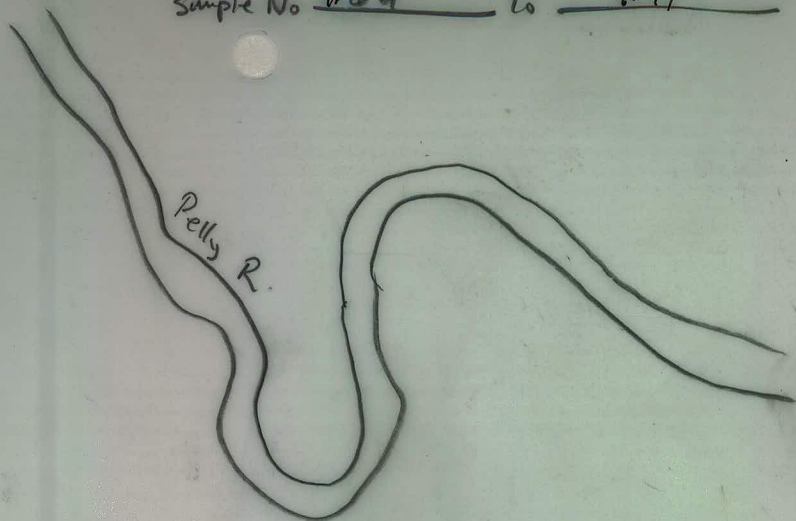
Sept 5/69

A12182-192

105' K5



Sample No 9464 To 9471



Plotted Hand  
24/10/69

Aug 3

9.61

~~10.10~~

10 F

~~DEEP~~

6 inches

~~FAST~~ } SLOW  
                  } MED  
                  } FAST

med

~~SEMENT~~ ~~ROCK~~

Grey

~~BLENK~~  
~~BROWN~~  
~~GREY~~  
~~RED~~

Aug. 30

9h 2

Wide

8'

Deep

1 F<sub>0</sub>

Sed. Color

grey

Med.

Current

Aug 30

9h 3

Wide 15'

Deep 1'

Sed. Color Grey

Fast (Med)

9h 4

Wide 10'

Deep 10"

Sed. Color grey

Med Current

Aug. 30

9h5

Wide 5'

Depth 8 ft.

Sediment Color Black

Med. Current

9h6

Wide 5'

Depth 5'

Sed. Color grey

Med. Current

9h7

Wide 25'

Depth 1 ft.

Sed. Color grey

Med. Current

9h8

Wide 20'

Depth 1 ft.

Sed. Color grey

Fast Current

Aug. 30

9L9 Wide  
Depth 2E ft  
Sed. Color 6 inches  
grey  
med current

9L10 Wide 25 ft  
Depth 10 inch  
Sed. Color grey  
med current

9L11 Wide 20'  
Depth 1 ft  
Sed. Color grey  
med. current

9L12 Coarse  
Wide 5'  
Depth 1 inch  
Sed. Color grey  
fast current

Aug 30

9-13 Wide 30  
Depth 1 ft  
Sed. Color black  
Fast current

9L14 Wide 20'  
Depth 1 1/2'  
Sed. Color green  
Fast current

9L15 Wide 20'  
Depth 1 ft  
Sed. Color grey  
Fast current

9L15 Wide 20'  
Depth 1 ft  
Sed. Color grey  
Fast current

9L16 Wide 20'  
Depth 1 ft  
Sed. Color grey  
Fast current

August

1st

Water sample

Width 10'

Depth 10''

med. current

9th Water sample

Width 30'

Depth 28''

Aug 31

- |     |              |           |
|-----|--------------|-----------|
| 9h1 | Wide         | 5 ft.     |
|     | Depth        | 3 ft.     |
|     | Sed. Color   | Black     |
|     | Fast Current |           |
| 9h2 | Wide         | 5 ft.     |
|     | Depth        | 5 ft.     |
|     | Sed. Color   | Black     |
|     | Fast Current |           |
| 9h3 | Wide         | 5 ft.     |
|     | Depth        | 2 ft.     |
|     | Sed. Color   | Black     |
|     | Fast Current |           |
| 9h4 | Wide         | 15 ft.    |
|     | Depth        | 1 1/2 ft. |
|     | Sed. Color   | Grey      |
|     | Fast Current | 0.        |
| 9h5 | Wide         | 15 ft.    |
|     | Depth        | 1 1/2 ft. |
|     | Sed. Color   | Grey      |
|     | Fast Current | 0         |

Aug 30

- |     |  |                            |
|-----|--|----------------------------|
| 926 | Wide<br>Depth<br>sed. color<br>Fast Current  | 10 ft<br>1 ft<br>gray      |
| 927 | Wide<br>Depth<br>sed. color<br>Fast Current  | 20 ft<br>1 1/2 ft<br>Black |
| 928 | Wide<br>Depth<br>sed. colour<br>Slow Current | 10 ft<br>4 ft<br>Brown     |
| 929 | Wide<br>Depth<br>sed. colour<br>slow current | 15 ft<br>4 ft<br>brown     |
| 920 | Wide<br>Depth<br>sed. color<br>Slow Current  | 10 ft<br>4 ft<br>brown     |

9h11 Wide 10 FT  
Depth 4 ft  
Sediment color Brown  
Slow Current

9h12 Wide 10 FT  
Depth 4 FT  
Sediment color Brown  
Slow Current

9h13 Wide 10 FT  
Depth 4 FT  
Sed. Color Brown  
Slow Current

Water Sample

9h1 Wide 10 FT  
Depth 4 FT  
Slow Current

Sept 1

9h31	Wide	2	ft
	Depth	6	inch
	Seed Color		Grey
	Fast Current		

9h32	Wide	10	FT
	Depth	6	inch
	Seed Color		Grey
	Fast Current		

9h33	Wide	10	FEET
	Depth	6	in.
	Seed Color		Grey
	Fast Current		

9h34	Wide	10	FT
	Depth	6	in.
	Seed Color		Grey
	Fast Current		

9h35	Wide	5	F.T.
	Depth	6	in
	Seed Color		Grey
	Fast Current		

Sept 1

9L36	Wide	10	FT
	Depth	6	in
	Sed. Color		Grey
	Fast Current		

9L37	Wide	15	FT
	Depth	6	in
	Sed. Color		Grey
	Fast Current		

9L38	wide	15	FT
	Depth	6	in
	Sed Color		Grey
	Fast Current		

9L39	Wide	10	FT
	Depth	6	in
	sed. Color		Grey
	Fast Current		

9L40	wide	15	FT
	Depth	1	FT
	Sed Color		Grey
	Fast Current		

Sept 1

9241 Wide 7 FT  
Depth 1 1/2 FT  
Seed Color Gray  
Fast Current

9242 Wide 15 FT  
Depth 1 FT  
Seed Color Black  
Fast Current

9243 Wide  
Depth  
Seed Color  
Fast Current

9244 Wide 15 FT  
Depth 1 FT  
Seed Color Gray  
Fast Current

9245 Wide 15 FT  
Depth 1 FT  
Seed Color Black  
Fast Current

Sept 1

9246	Wide	15	FT
	Depth	1	FT
	Sed Color		Grey
	Fast Current		

9247	Wide	15	FT
	Depth	1	FT
	Sed. color		Grey
	Fast Current		

9248	Wide	15	FT
	Depth	1 1/2	FT
	Sed Color		Brown
	Fast Current		

9249	Wide	25	FT
	Depth	3	FT
	Sed Color		Grey
	Fast Current		

9250	Wide	30	FT
	Depth	5	FT
	Sed. color		Grey
	Fast Current		

Sept 1  
961 Wide 30 FT  
Depth 5 FT  
Sed. Color Brown  
Fast Current

Water Sample

964 wide 15 FT  
Depth 1 FT  
Fast Current

Sample ~~517~~ to ~~546~~  
517 546

A  
W

20

E-Buss

A-12176-82

Photo 152

105K 054K09

Aug 29/69

151 out

PICK-UP

ON ROAD

517  
518  
519  
520  
521  
522  
523  
524  
529  
526  
527  
528  
529  
530  
531  
532  
533  
534  
535  
536  
537  
538  
539  
540  
541  
542  
543  
544  
545  
546

PLATA

Back to Road

SAMP ES:  
9V618-9V657

9V657  
(SILT)  
↑  
DELUY RIVER

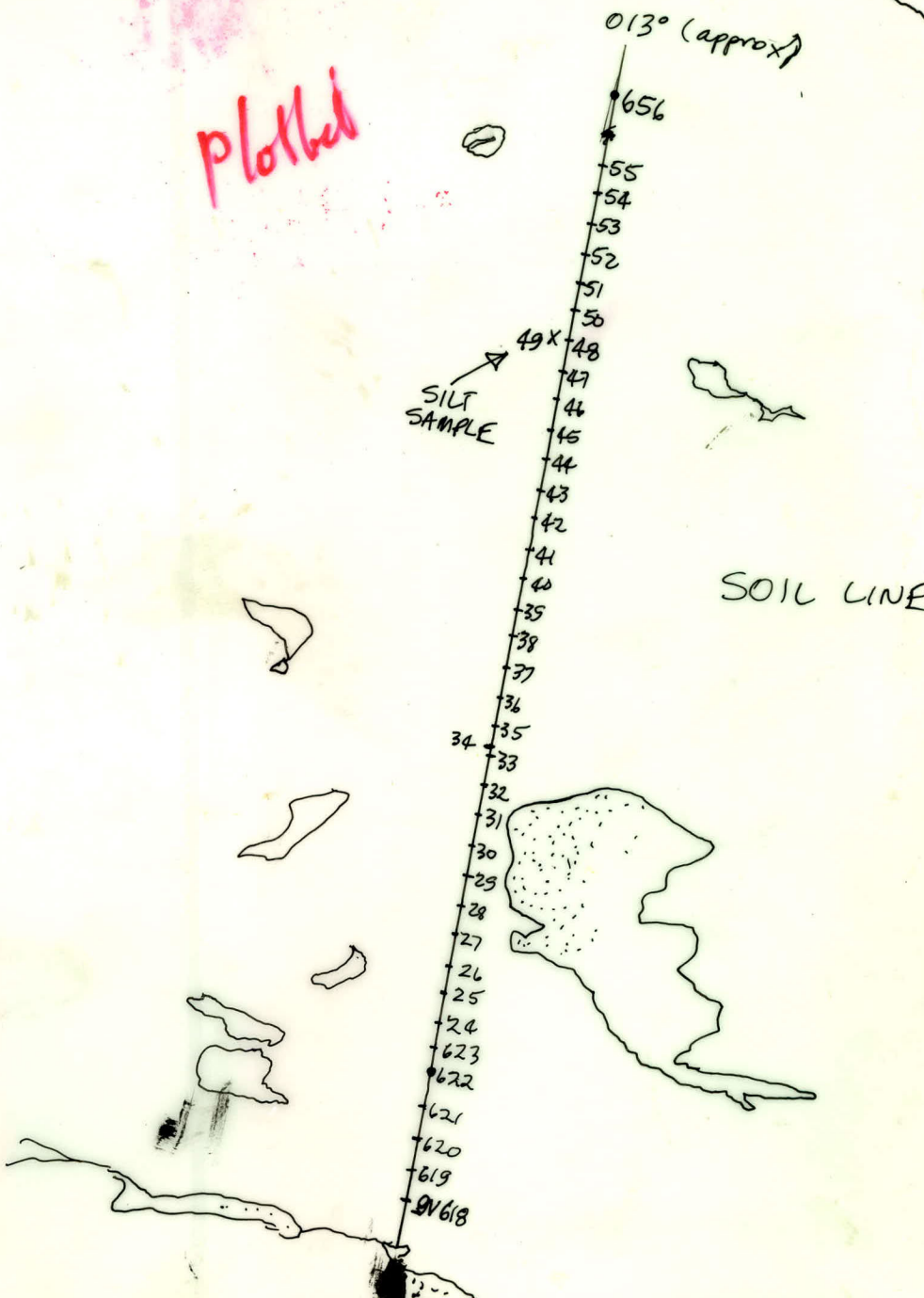
TRAW #18  
SOIL LINE

A12232-229

AUG 23, 69  
GARY DENTON

105K4/K5

Plotted



Samples 9N248 to 9N256

105 ~~K~~ ~~R~~ ~~O~~ 5

Aug 23, 1969

Salts A N

Traw. No 17

~~Re wells~~

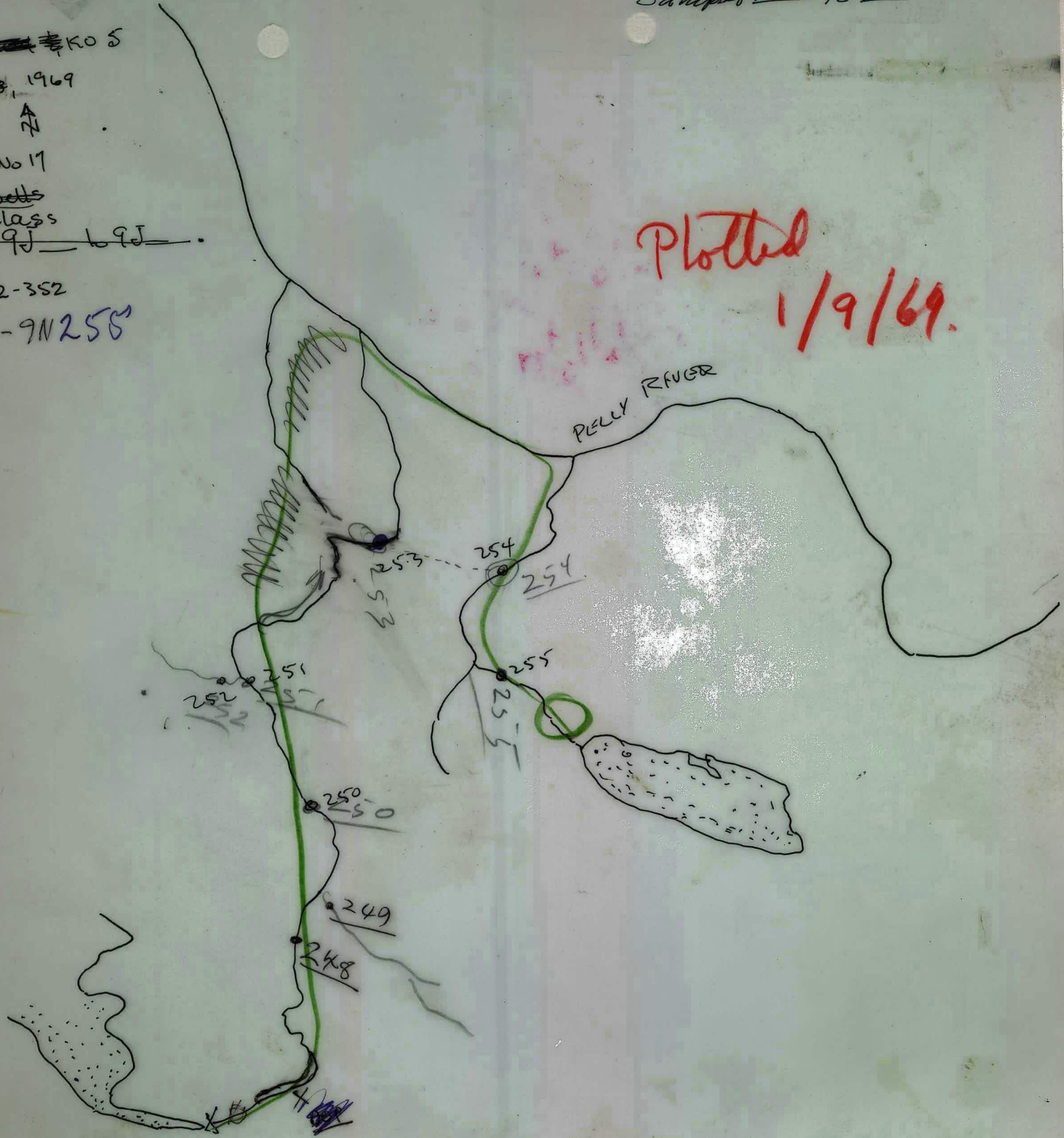
Neil Glass

Samples 9J - 69J

A 12232-352

9N248 - 9N256

Plotted  
1/9/69.



105 K5

Samples 553 to 569

Aug 19<sup>th</sup> / 69

A12182-194

Traverse #8

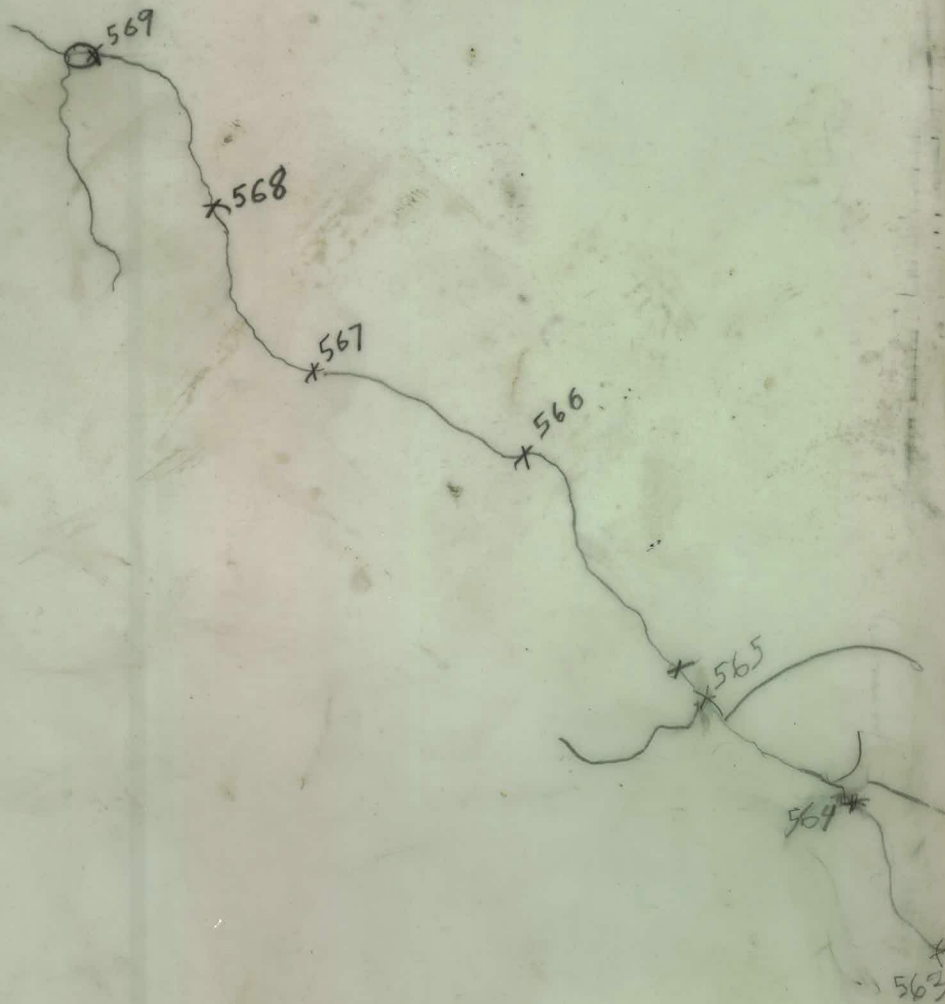
#2 of 2

2 of 2

Plotted



W. HAMILTON

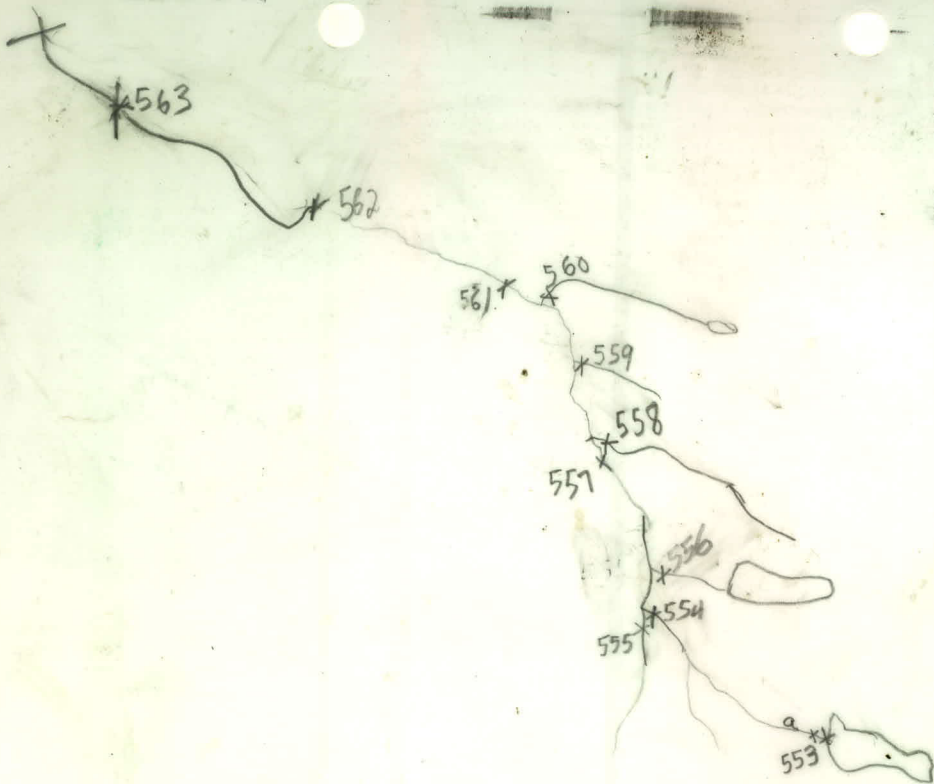


105K 5

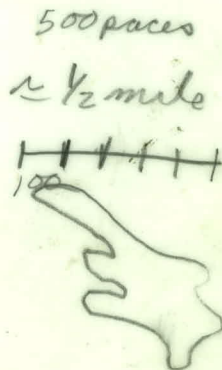
Samples to  
A12176-67  
#1 of 2  
**Plotted**

Aug 19<sup>th</sup> / 69  
Traverse # 8  
1 of 2

N  
W. HAMILTON



a fl. on ridge



To Plotter:

Approx lat of #562 =  $62^{\circ} 18'$   
long =  $133^{\circ} 50'$



105K 5

Aug 19<sup>th</sup> / 69

Traverse #7

2 of 2



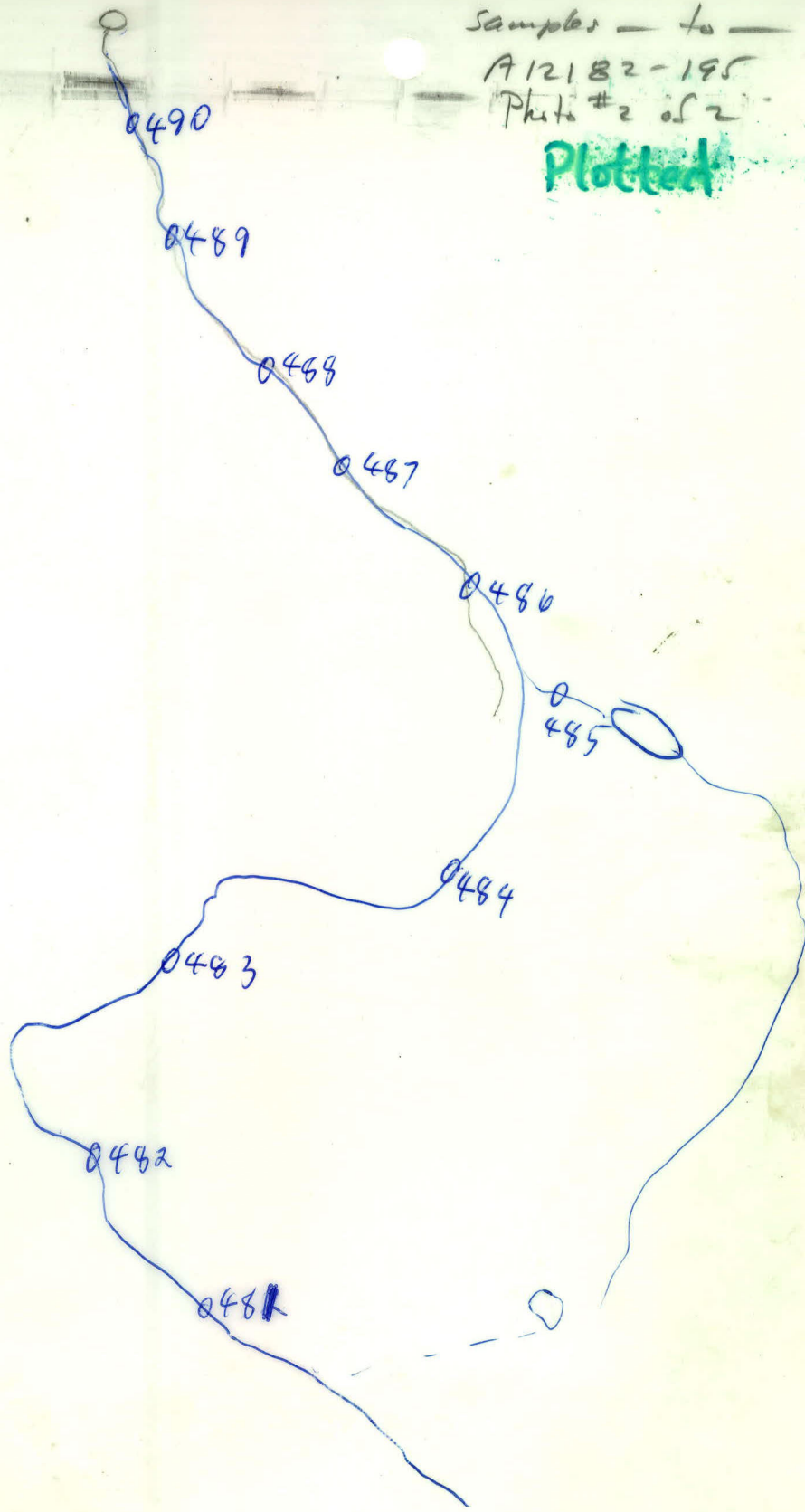
BUGS

Samples — to —

A12182-195

Photo #2 of 2

Plotted



105 K5

G DENTON

Sample 578 to 584

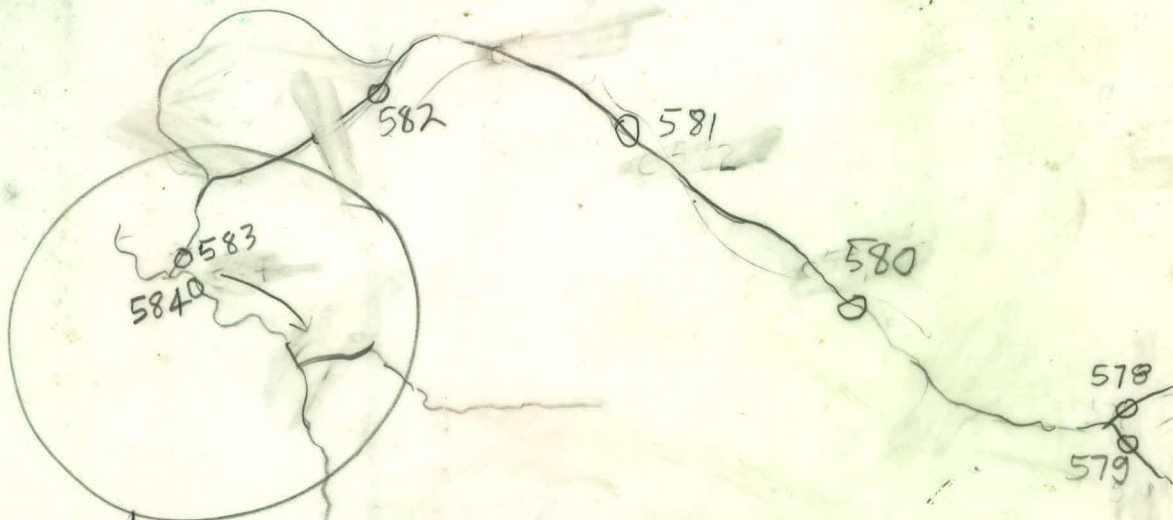
A12182-194

Aug 19/69  
Traverse #9  
2 of 2

105 K05

#2 of 2

Plotted



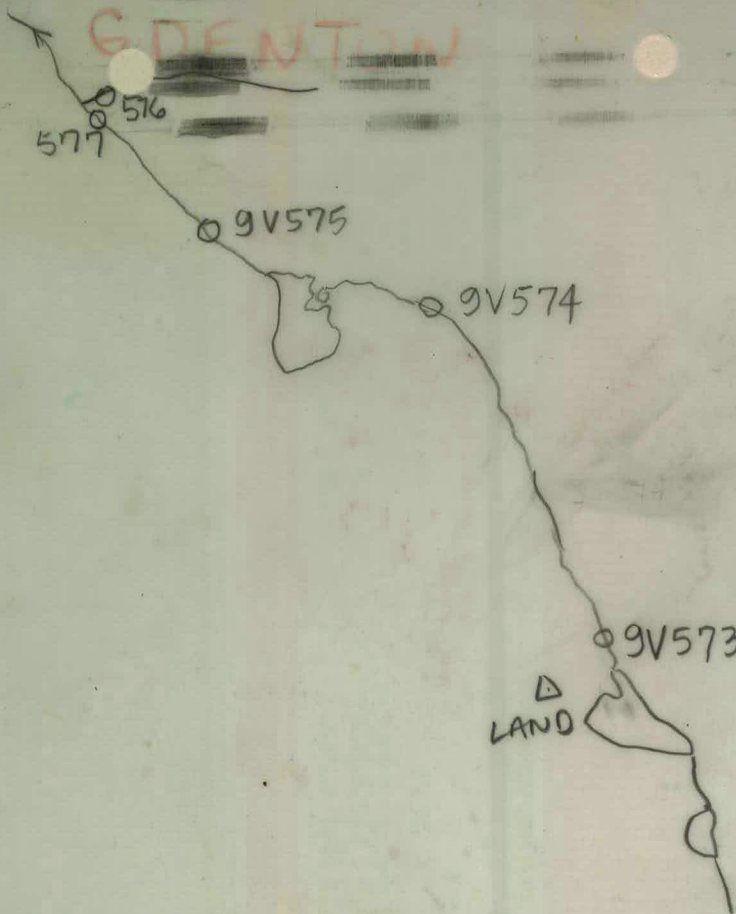
SAMPLES 578-584

SCREW-UP

(CREEKS DO NOT  
JOIN AS SHOWN)

05K5

Aug 20<sup>th</sup>/69  
Traverse #9  
1 of 2



Samples 573 + 577

A12176-68

#1 of 2

Plotted

#1's 573-577

10SK5

9H 590-622

A-12176-80

Walter Hamilton

Traverse # ?

24/8/69

Sample #s 590 to 628

All soil samples except  
The following silt

samples: 596, 601, 606, 612,  
618, 624, 627

Plotted

1/2 mile  
500 paces

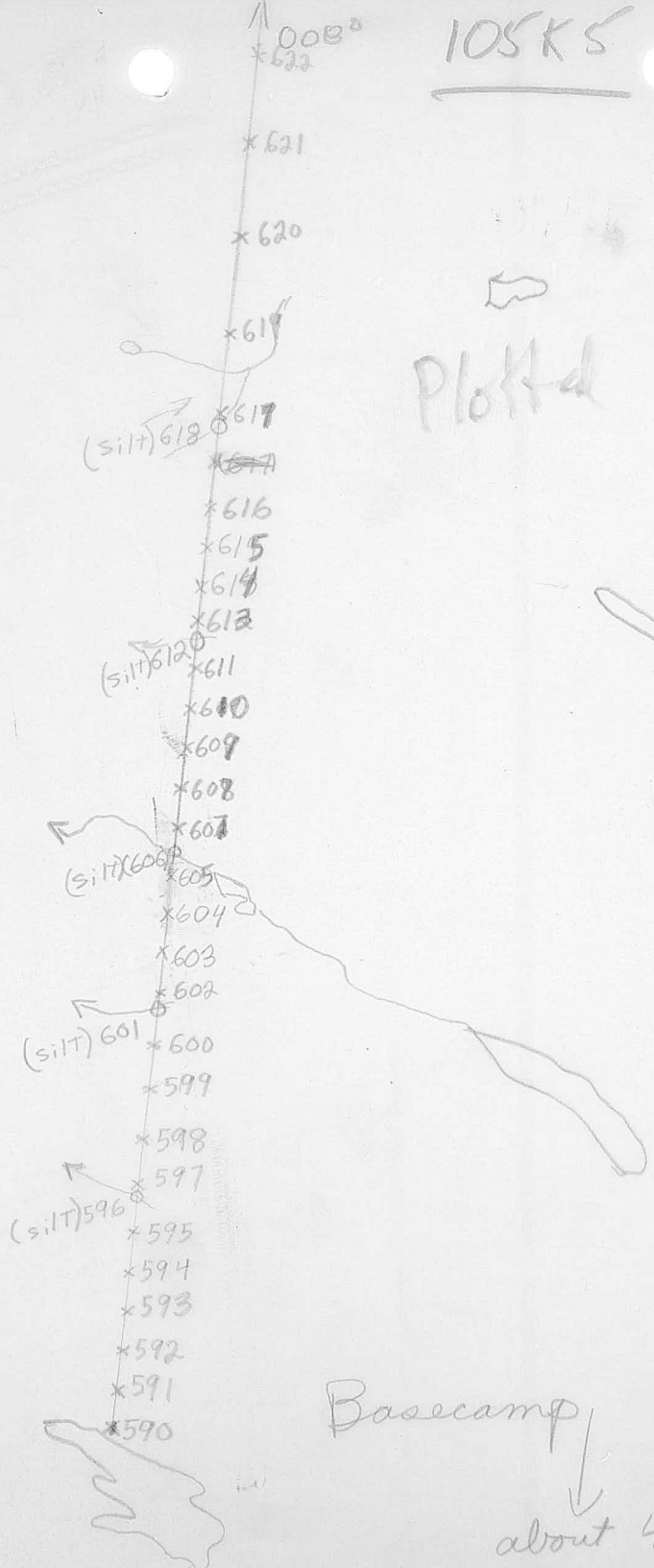


SAMPLES #

9H 590-622

NB #s 596, 601, 606

612, 618 are  
silt - the  
rest of soils



94623 - 94628

105205

P/6<sup>1/2</sup> d.

A-12176-77

Walter Hamilton

Traverse #?

24/8/69

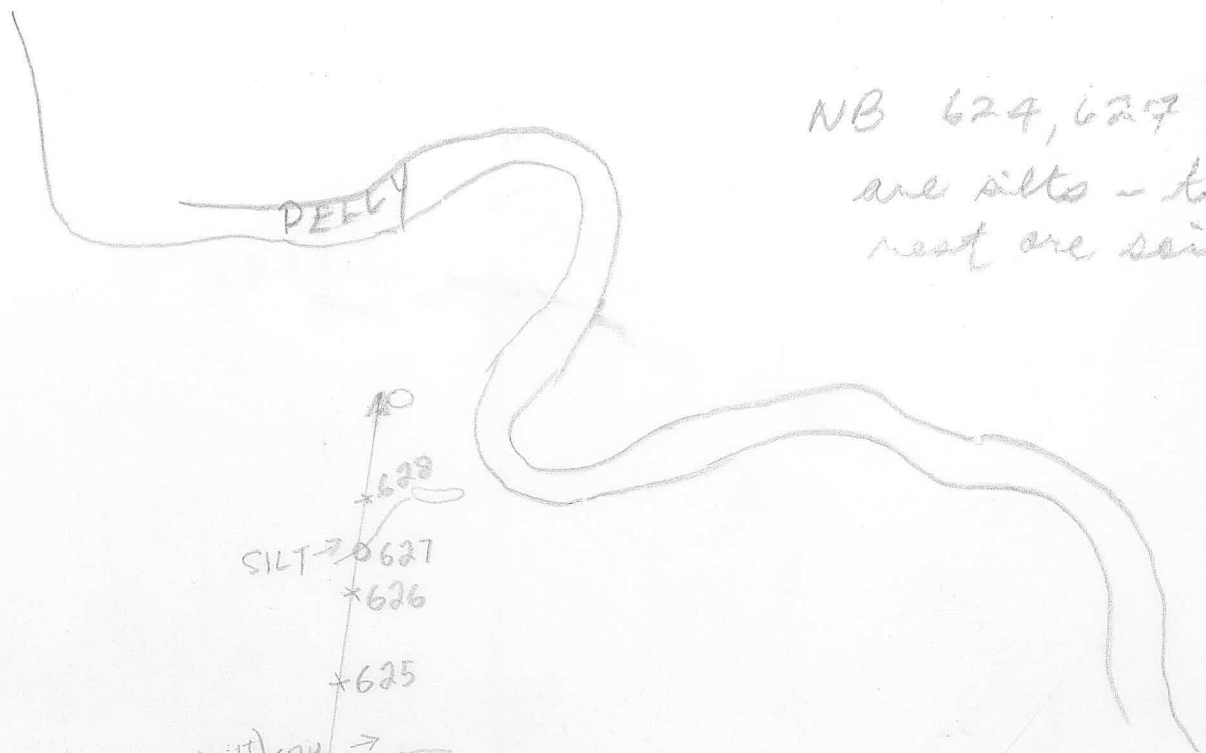
Sample #'s 590 to 628

All soil samples except  
the following silt

samples: 596, 601, 606,  
612, 618, 624,  
627

NB 624, 627

are silts - the  
rest are soils



SILT → 627

\*626

\*625

(silt) 624 →

\*623