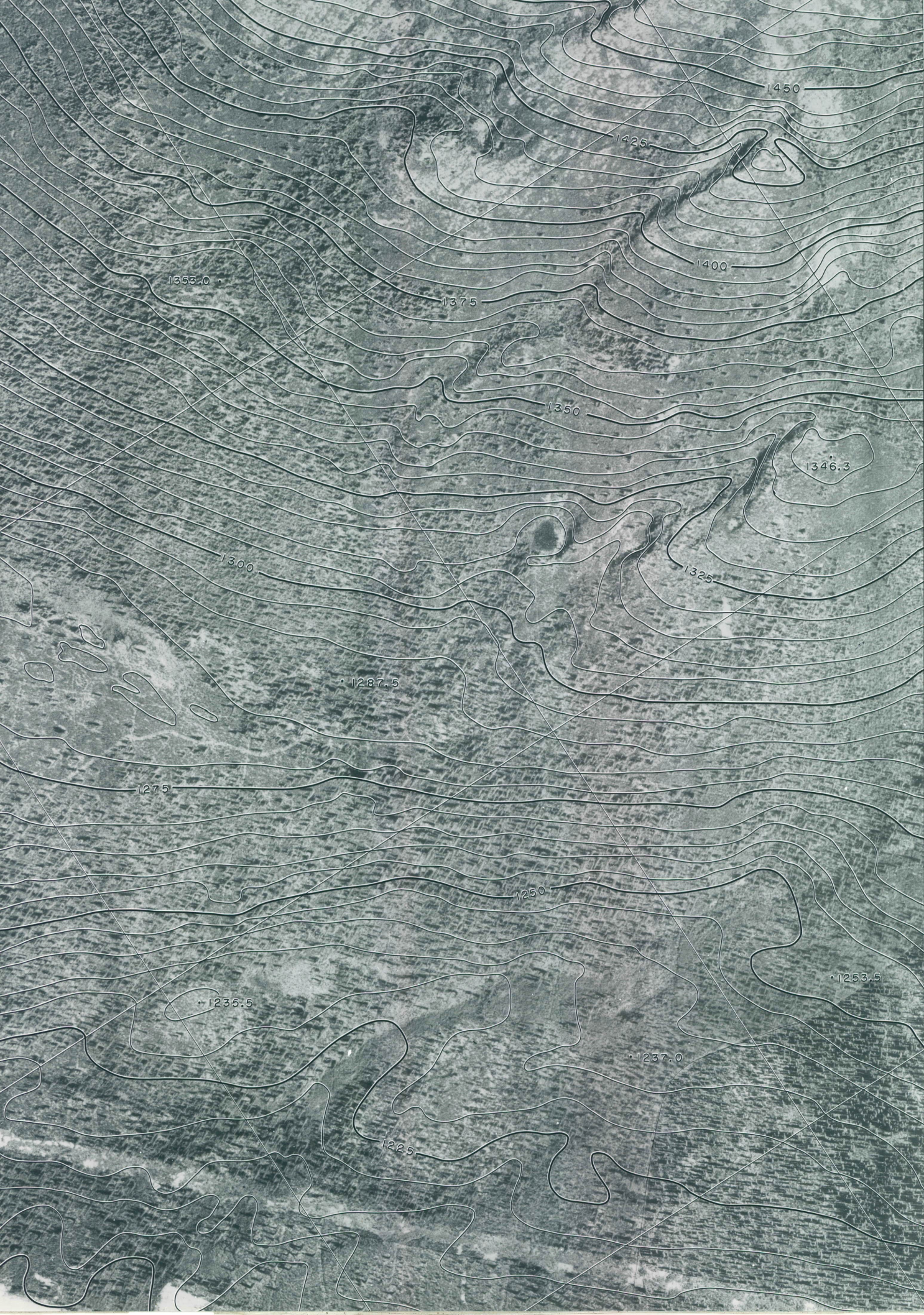




E-6-A(E $\frac{1}{2}$)12
11500

015487



R-49 R-52 R-53
R-50 R-55 R-54
R-51

R-57

R-56

R-30
11
30

R-29
11
27 → 5

E-6-4(E $\frac{1}{2}$)12
115000



R-36
R-37
R-38
R31 R32 R33 R34 R35 R36 R37 R38
D.O.B. 12/10/34

cut line

E-6-4(E $\frac{1}{2}$)7 1:5000

586 500ME

6 909 000MN

6

R-36
R-35
R-31
R-32
R-34
R-33
L-22
L-18
L-16
R-37
23

cut line

E-6-4(E $\frac{1}{2}$) 7 LISBOD



1:50000
E6-4(E1/2) 10

588 000mE

588 500mE

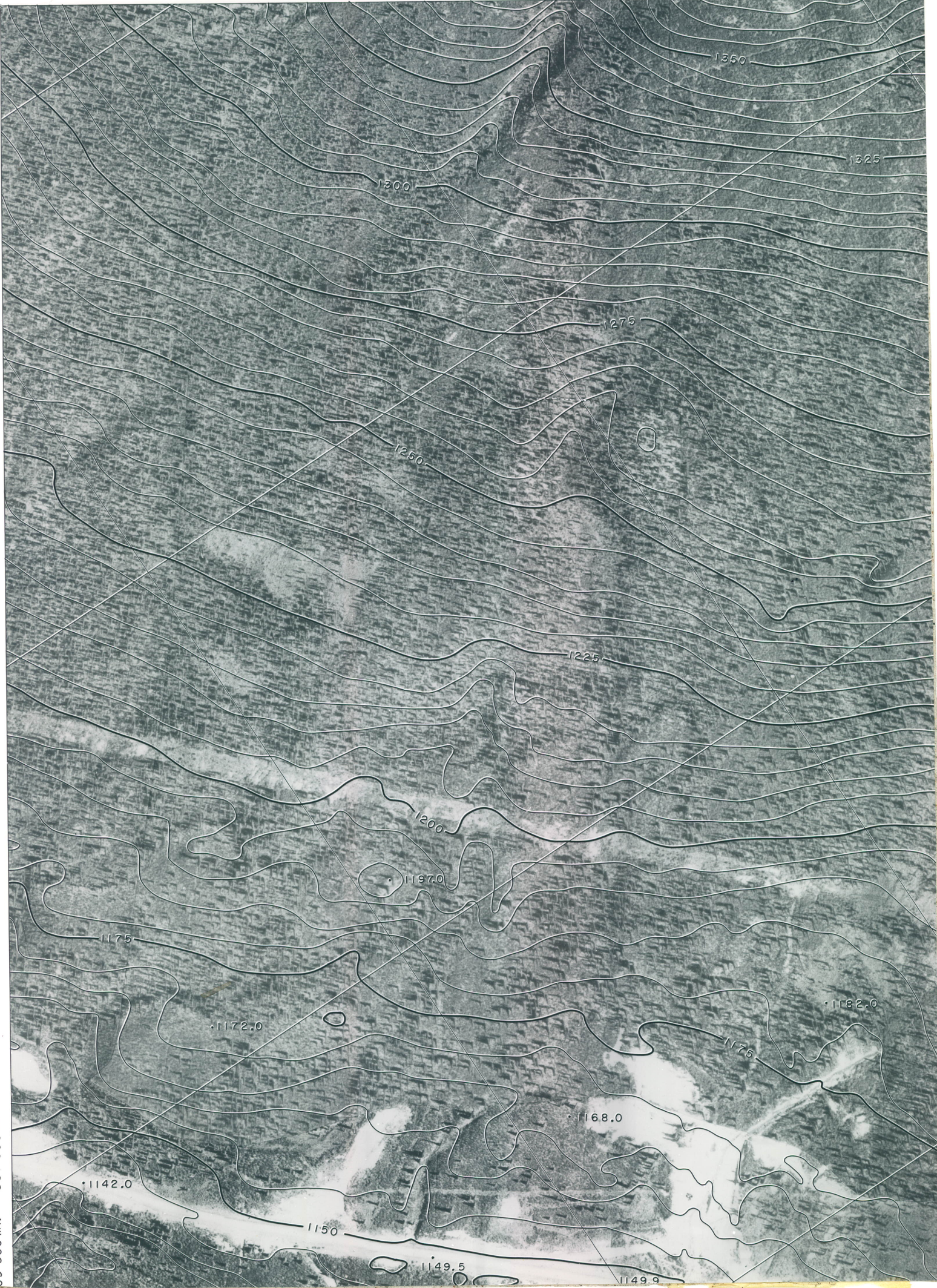
6 910 500mN

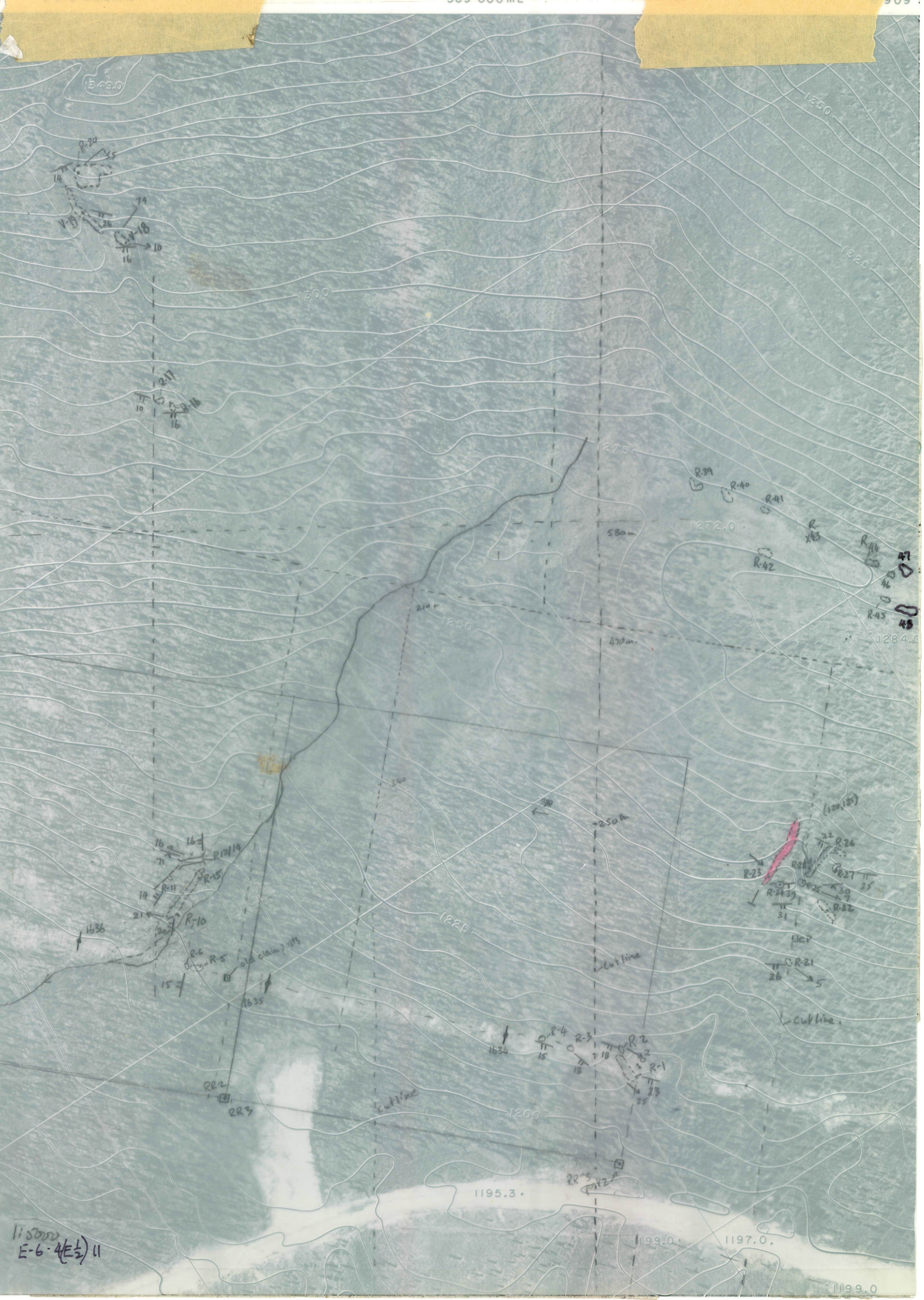
587 500mE

6 910 000mN

587 000mE

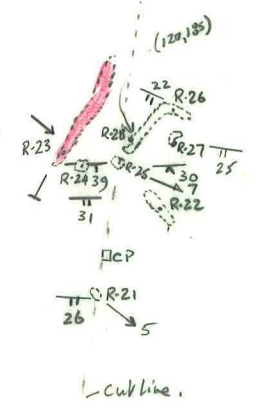
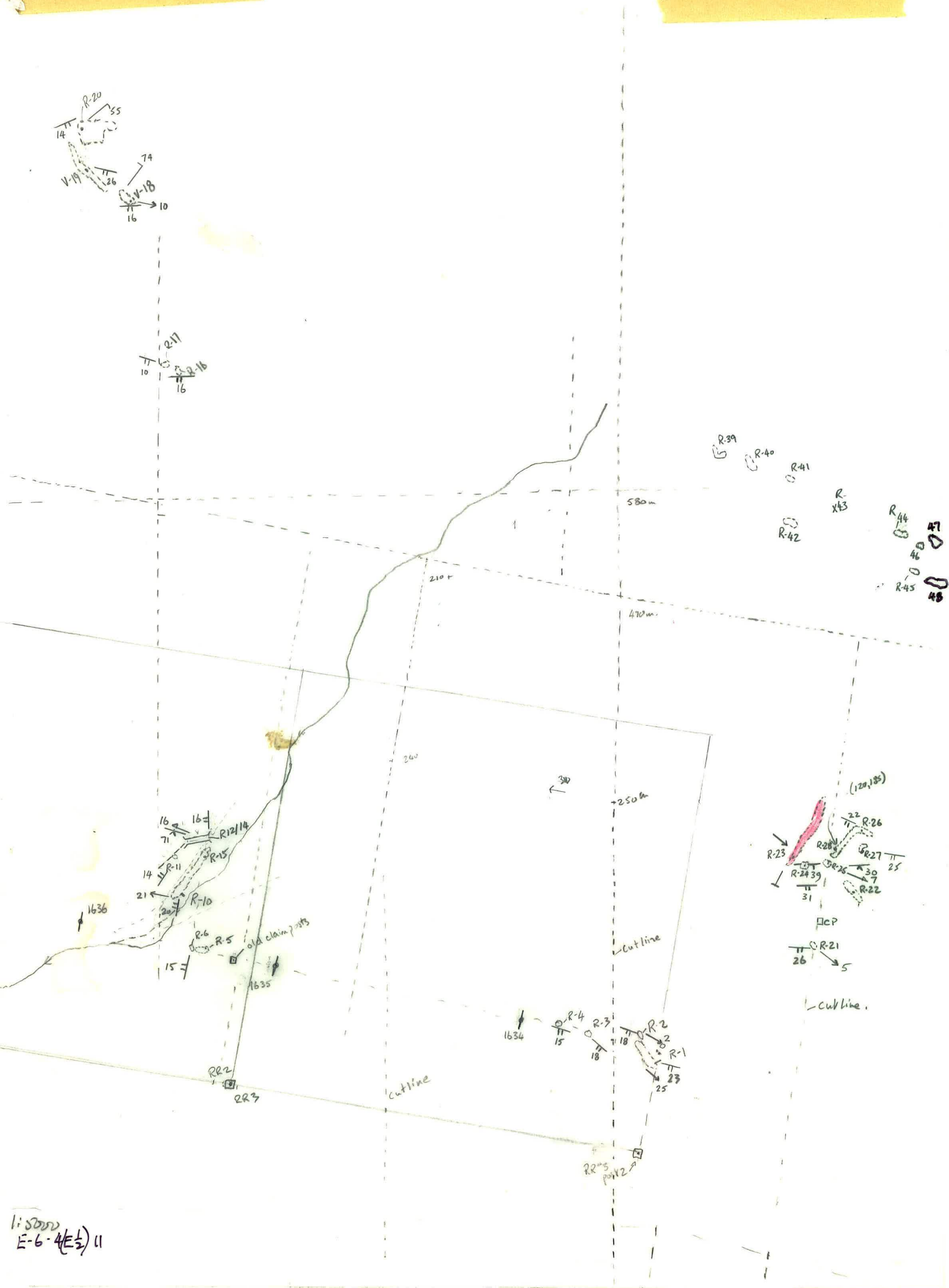
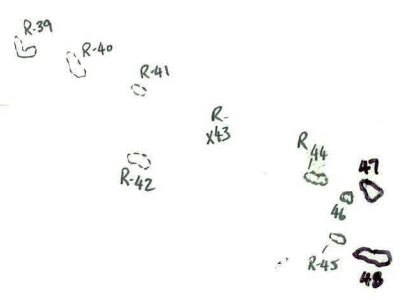
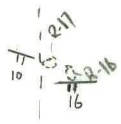
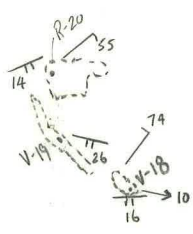
09 500mN





115000
E-6-4(E $\frac{1}{2}$) 11





1:5000
E-6-4(E-3) 11