

DIAMOND DRILLING REPORT
SCOT MINERAL CLAIM GROUP

N.T.S. 105-0-6

DYNASTY EXPLORATIONS LIMITED

By: J.S.Brock

Sept. 1972

P. Lane

FILE COPY

-015539

DIAMOND DRILLING REPORT

SCOT MINERAL CLAIM GROUP

Mayo Mining District
Yukon Territory

Longitude: 131°17' W.
Latitude : 63°20' N.

N.T.S. 105-O-6

Work done in the period
July 5th - August 31, 1972

By:

JOHN S. BROCK

PETER LANE

ATLAS EXPLORATIONS LIMITED

September 18, 1972

TABLE OF CONTENTS

LIST OF CLAIMS

INTRODUCTION	1
LOCATION AND ACCESS	1
DIAMOND DRILL PROGRAM	2
D.D.H. 72-S-2	2
D.D.H. 72-S-4	3
Delays in Drilling	3

Appendix I	-	Claim Map
Appendix II	-	Proposed Initial Diamond Drill Holes
Appendix III	-	Geochemical Anomaly Composite Map
Appendix IV	-	List of Personnel
Appendix V	-	Summary of Costs
Appendix VI	-	Affidavit Supporting Summary of Costs
Appendix VII	-	Vouchers Supporting Costs

ATLAS EXPLORATIONS LIMITED

(N. P. L.)

330 MARINE BUILDING
355 BURRARD STREET
VANCOUVER 1, B.C.

DIAMOND DRILLING REPORT SCOT MINERAL CLAIM GROUP

INTRODUCTION

In September, 1967, as a result of a reconnaissance soil sampling program, the Scot 1-24 mineral claims were staked. They covered an area of high zinc values in soils. Later, in 1970, as a result of additional exploration, the Scot 26, 29 and 30 mineral claims were staked.

Follow-up work was done on the Scot Group during June and July, 1968. During this time, a grid was cut over the area of interest (total 67,200 ft.). Work done on this grid consisted of geologic mapping, geochemical soil sampling and geophysical surveying. Silt sampling was done on all drainages in the claim area. In 1971 a gravity survey was completed over geochemically anomalous zones. A drill program to test geochemical and gravity anomalies was started in July, 1972.

LOCATION AND ACCESS

The Scot mineral claim group is located north of the Hess River, approximately three miles on bearing 030° from the east end of Niddery Lake. The group is in the southwest portion of claim sheet 105-0-6. The property is about 100 air miles from the settlement of Ross River.

Access to the property can be made by float-equipped aircraft to "Jake Lake", $1\frac{1}{2}$ miles northeast of the claim group. A trail has been cut from this lake to the property.

The only suitable campsite at Jake Lake is on the northeast shore. Three helipads have been cut on the property.

DIAMOND DRILL PROGRAM

Mobilization of the drill from Sheldon Lake (50 miles east of Jake Lake) to Jake Lake began on July 6th and was completed on July 9th. The drill is a Boyles 174 machine with a diesel powered engine. It was set up at the first location by July 12th.

Four diamond drill holes, each 500 feet in length, have been proposed as follows:

<u>Hole No.</u>	<u>Location</u>	<u>Dip</u>	<u>Bearing</u>	<u>Status</u>
72-S-1	11E/O+50N	-60	N35E	Not drilled
72-S-2	2W/2N	-45	N35E	Completed (502')
72-S-3	10W/1S	-45	N35E	Moving on to set-up
72-S-4	4W/13S	-45	N35E	Abandoned (153')

D.D.H. 72-S-2

The hole was collared on July 19th and completed at a depth of 502 feet on August 9th. Coring began at 121 feet. The average core recovery was 90%. The hole was cased with NW to 54 feet and with BW to 153 feet.

The hole intersected a series of phyllites with intervals of graphitic phyllite and cherty phyllite. Pyrite was generally common in small amounts, occurring as syngenetic accumulations along bedding planes and as secondary mineralization associated with quartz in blebs and occasional bands up to 1½ inches wide. The maximum pyrite content was visually estimated as 5% over an 86 foot interval from 416 ft. to 502 ft. No other sulphides were noted apart from two specks of chalcopyrite.

The core was chip-sampled in 10 foot lengths from 121 to 502 feet and is being geochemically analyzed for zinc. Some massive sulphide bands were sampled and are being assayed for zinc.

D.D.H. 72-S-4

The hole was begun on August 20th and abandoned at 153 feet on August 27th. Core recovery began at 40 feet and was approximately 20% for the hole. Sludge samples were collected in 5 foot intervals from 30 to 153 feet. NW and BW casing were run to 74 feet and 120 feet respectively because of poor core recovery and caving conditions. Hard, blocky ground incurred excessive diamond wear of bits and casing shoes to the extent that the contractor would only continue drilling at cost. The hole was therefore abandoned as it seemed likely that sludge and core samples would be sufficient to determine the cause of the geochemical anomaly.

The rock-type intersected was a hard, black, cherty, shale or phyllite. Some quartz vein material appeared in the last few inches of the core.

Sludge and core are being analyzed for zinc, however, assay results are not yet available.

Delays in Drilling

Progress in the program was slower than anticipated due to

- (a) Slow drilling due to ground conditions. An average of 19 feet per shift has been cored for the two holes drilled to date. It was necessary to run a total of 128 feet of NW casing and 273 feet of BW casing for the two holes.
- (b) Breakdowns, waiting for drill parts, and aircraft delayed by bad weather, and slow drill moves have accounted for approximately 40% of the period July 12th to August 26th.

Appended to this report is the log, section and projected sections (with geochemical and geophysical data profiles) for D.D.H. 72-S-2.

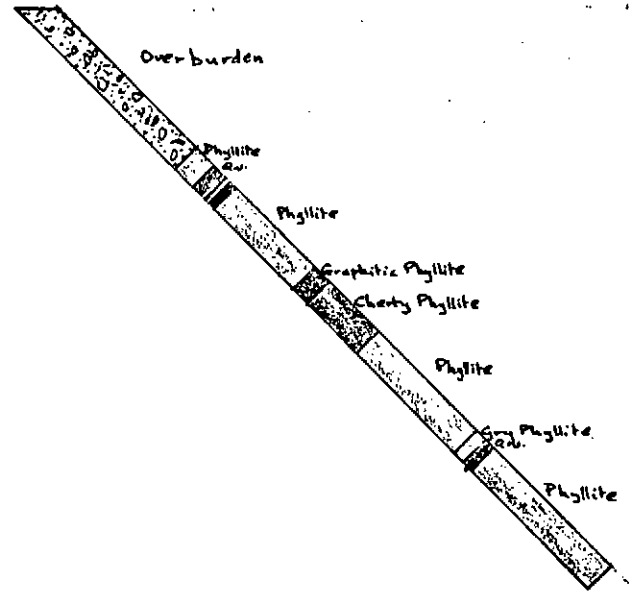
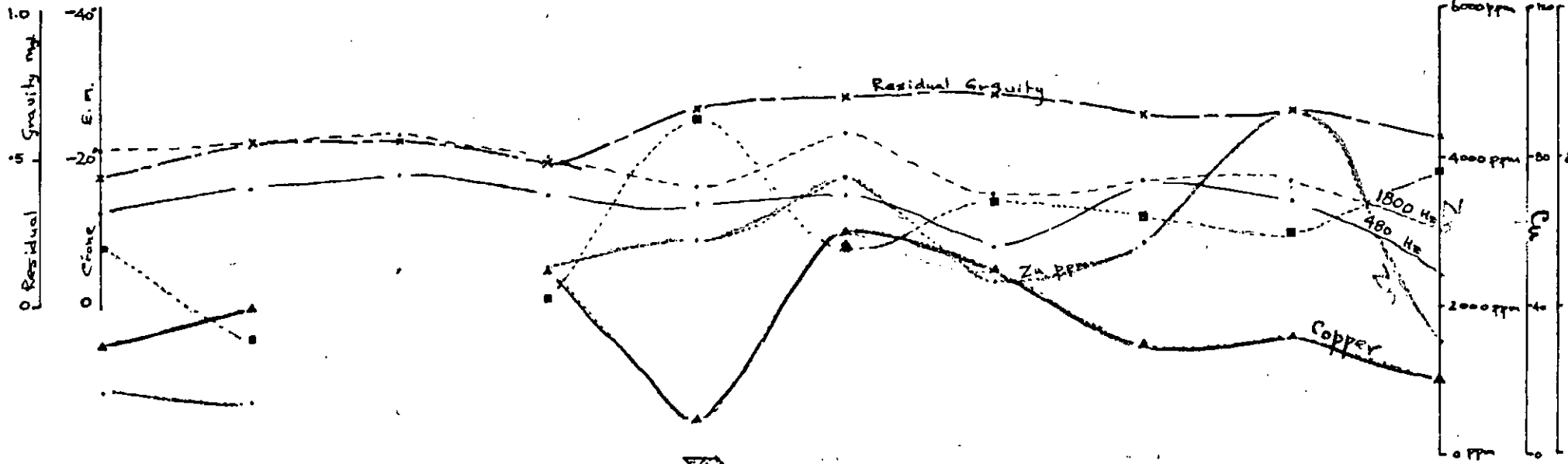
Respectfully submitted,

A handwritten signature in black ink, appearing to read 'J. S. Brock', written in a cursive style.

J. S. Brock,
Vice-President Exploration

September, 1972

25 15 0+00 1N 2N 3N 4N 5N 6N 7N



Projection of D.D.H. 72S-2
 from 2N/2W bearing N35E
 onto LINE 0+00

SCOT CLAIMS

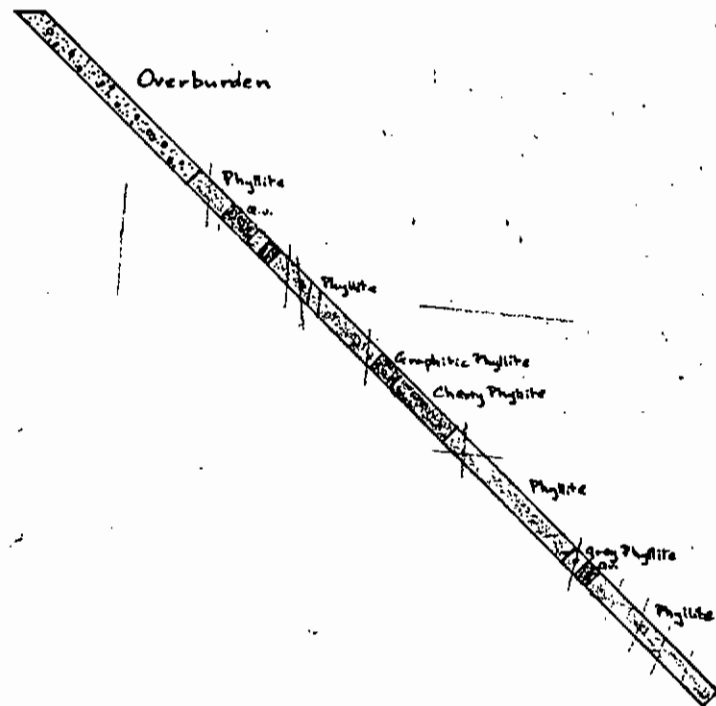
D.D.H. 72 S-2

Collared at 2+00w/2+00N

Dip -45°

Bearing N35°E

Depth 502 ft.



Claim No.	Grant No.	No. of Claims	Staked by	Recording Date	Transfer Information		Due Date	Assessment Work and Remarks
					To	Date		
1-4	Y14044-Y14047	4	T. Adamson	Oct. 11/67	Hess Ventures	Nov. 3/67	Mar. 1/75	Date Filed: Oct. 1969
5-6	Y14048-Y14049	2	T. Adamson	"	"	"	Mar. 1/74	Amount: \$ 7,061.00
7	Y14050	1	T. Adamson	"	"	"	March 1/73	Type:
19-24	Y14062-Y14067	6	M. Ladue	"	"	"	Mar. 1/75	Geol. 1,272.00 Geochem 2,958.00 Geophy.
26	Y33548	1	R. Wells	Sept. 30/70	A. E. Aho	Nov. 2/70	Sept. 30/72	Linecutting 1,901.00 Mag. Survey 356.00 EM Survey 574.00
29	Y33551	1	R. Wells	"	"	"	Sept. 30/72	
30	Y33552	1	R. Wells	"	"	"	Sept. 30/72	Date Filed: Feb. 1971
33-40	Y68372-Y68379	8	P. Lane	Aug. 3, 1972			Aug. 3, 1973	Amount: \$ 4,116.45
41-44	Y68472-Y68475	4	D. Pastro	Aug. 18, 1972			Aug. 18, 1973	Type:
47-50	Y68476-Y68479	4	D. Pastro	Aug. 18, 1972			Aug. 18, 1973	Field Work 1970
51-58	Y68480-Y68487	8	D. Jobb	Aug. 18, 1972			Aug. 18, 1973	

DIAMOND DRILL RECORD,

HOLE NO. 72S-2

PROPERTY SCOT CLAIMS, Jake Lake

SHEET NUMBER 1

SECTION FROM _____ TO _____

STARTED 19th July, 1972

LATITUDE 2+00N

DATUM _____

COMPLETED 9th August, 1972

DEPARTURE 2+00W

BEARING N35°E

ULTIMATE DEPTH 502'

ELEVATION _____

DIP -45°

PROPOSED DEPTH 500'

DEPTH FEET	CORE RECOV	DESCRIPTION	CORE SAMPLE NO.	FOOTAGE	GEOCHEM RESULTS/ppm				SLUDGE SAMPLE NO.	FOOTAGE	SLUDGE ASSAYS			
					AG.	CU.	PB.	ZN.			AG.	CU.	PB.	ZN.
121		OVERBURDEN												
146	90%	PHYLLITE Lt. grey. Good cleavage //el to bedding at 50° to core axis. Minor py. cu bds. planes; more massive py in blebs & occasional thicker bands. Qtz. usually assoc with more massive py. Occasional thin calcite veinlets at 80° to clog. such that veinlets approx. //el core axis.	3707	121-130				60						
			08	130-140				44						
			09	140-144				67						
		140-144 Phyllite interbanded w. thin irregular, discontinuous bands of blk. shale or phyllite.												
		Lost core 144-146.												
164.5	38%	QUARTZ VEIN. White milky qtz. No sulphides visible	3710	146-158				26						
		Inclusions of phyllite 158-160 obtained	"	158-164.5				48						
		Lost core. 1ft core betwn. 147½-156												
173.6		PHYLLITE. As at 140'. Generally barren of py. but occ. blebs.	3712	164½-173.6				100						
175		QUARTZ VEIN. Inclusions of phyllite w. py.												
176.3		PHYLLITE As at 173.6. Bdg at 45° to core axis.	3713	176.3				20						
180		QUARTZ VEIN. Phyllite inclusions	14	176.3-180				26						

* ASSAY

DIAMOND DRILL RECORD,

HOLE NO. 72-S-2

PROPERTY SCOT CLAIMS Jake Lake

SHEET NUMBER 2 SECTION FROM _____ TO _____ STARTED _____
 LATITUDE _____ DATUM _____ COMPLETED _____
 DEPARTURE _____ BEARING _____ ULTIMATE DEPTH _____
 ELEVATION _____ DIP _____ PROPOSED DEPTH _____

DEPTH FEET	CORE RECOV	DESCRIPTION	CORE SAMPLE NO.	FOOTAGE	GEOCHEM RESULTS/ppm				SLUDGE SAMPLE NO.	FOOTAGE	SLUDGE ASSAYS			
					AG.	CU.	PB.	ZN.			AG.	CU.	PB.	ZN.
256	90%	PHYLLITE Lt gray & black beds & laminae interbanded irregularly	3715	180-190				120						
		Occasional bands of massive py up to 1/2 inches wide with	16	190-200				140						
		assoc. qtz. Also irregular shaped blebs & disseminations of py	17	200-210				120						
		along bedding planes. Minor qtz/calcite veinlets cut bdg at high angle.	18	210-220				18						
		Qtz vein at 182', 3" wide; at 186', 6" wide	19	206'6"				370						
		Bdg angle to core axis: 50° at 190'; 40° at 200'; 50° at 210'; 45° at 220'; 50° at 235'	20	220-230				120						
		Lost core: 7 1/2' lost between 236 1/2 - 248	21	230-240				270						
			22	240-256				155						
270	95%	GRAPHITIC PHYLLITE. Dk. gray-blk. V. finely laminated. Occ. coarser	* 23	256-270				830						
		bands of lighter gray phyllite towards end of section. Bands show slumping. Minor	* 24	237				950						
		calcite veining particularly assoc. with light gray bands. Occ. cherty bands.	25	270-280										
		Py finely disseminated. Possibly up to 2%												
310	90%	CHERTY PHYLLITE. Dk. gray-blk. V. fine blk bands. Bdg at 50° to core axis	3725	270-280				125						
		Chert content gradational from Graphitic Phyllite above. Graphite on bdg/	26	280-290				415						
		clug planes. Fine qtz/calcite veinlets at 90° to bdg. are irreg. distribd.	27	290-300				1375						
		Thin accretus of py along bdg pls. in places.	28	300-310				1450						
		Band of massive py 1/4" wide at 272	* 29	272				375						

LIST OF PERSONNEL

J. S. Brock	Vice-President Exploration	Vancouver, B.C.
Peter Lane	Party Chief	Vancouver, B.C.
T. Skonseng	Prospector	Vancouver, B.C.
Peter Dean	Party Chief	Vancouver, B.C.
C. George	Draftsman	Vancouver, B.C.

Arctic Diamond Drill Crew

SUMMARY OF COSTS
SCOT CLAIMS

Prospecting - Wages		\$ 428.63
Geology - Wages		\$ 978.00
Geophysics - Wages		\$ 218.18
Geochemistry - Wages	37.93	
- Assays	<u>37.95</u>	\$ 75.88
Drilling - Wages	1,201.40	
- Contracts	13,467.50	
- Expenses	<u>183.30</u>	\$14,852.20
Camp - Wages	457.04	
- Groceries	257.09	
- Supplies	<u>90.94</u>	\$ 805.07
Transportation		
- Freight	70.40	
- Travel	812.13	
- Rotary Wing	3,975.86	
- Fixed Wing	3,600.00	
- Truck	<u>175.90</u>	\$ <u>8,634.29</u>
Total		\$25,992.25
District Expense (5%)		1,299.61
Administrative Overhead (10%)		<u>2,729.19</u>
TOTAL		<u>\$30,021.05</u>

ATLAS EXPLORATIONS LIMITED

(N.P.L.)


330 MARINE BUILDING
355 BURRARD STREET
VANCOUVER 1, B.C.

AFFIDAVIT SUPPORTING SUMMARY OF COSTS

I, CLIFFORD MALISH, Accountant, Atlas Explorations Limited, of Vancouver, British Columbia, do hereby state that, to the best of my knowledge and belief, the statement of costs presented in this report (Diamond Drilling Report Scot Mineral Claims) is both correct and true.

Clifford Malish

Date



Notary Public in and for
the Yukon Territory