

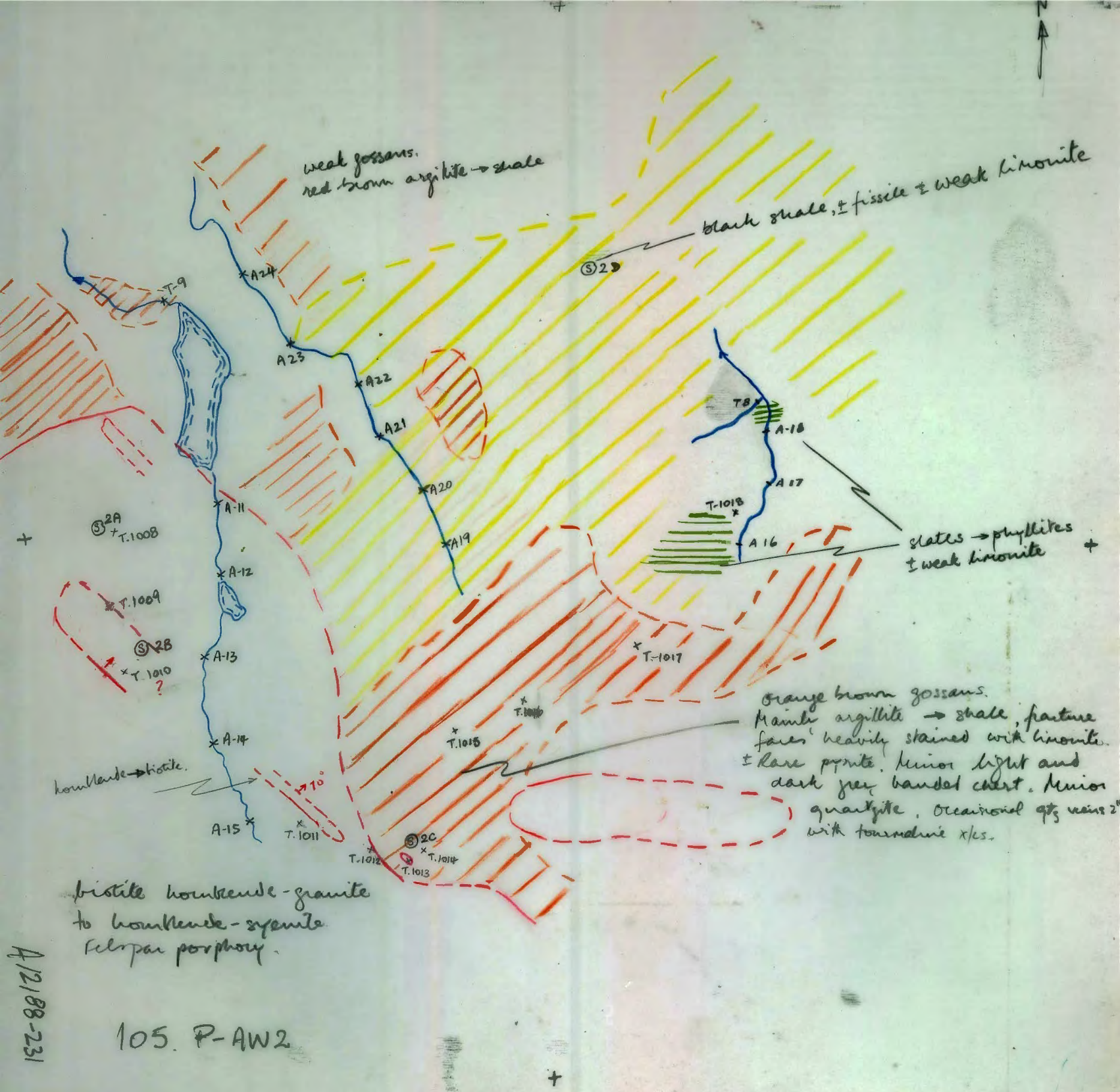


015571

A12247-386

105P-DN1

see 387 for southern contact / + drainage sampling



source of SiO_2 quartz/hornblende dyke?

Hornblende-syenite;
feldspar porphyry
v. minor disseminated pyrite
2% rounded inclusions

several feldspar dykes (6")

clavial debris

hornfels(?)

dark and pale
grey argillite, pale brown to
cream quartzite, minor
phyllite, minor argillaceous
breccia; dark pebbled
conglomerate

hornfelsed argillite
fine pyrite

intensive
silicified at contact

hornfelsed zone.
Much fine pyrite,
sericite +
sillimanite

105P-AC1

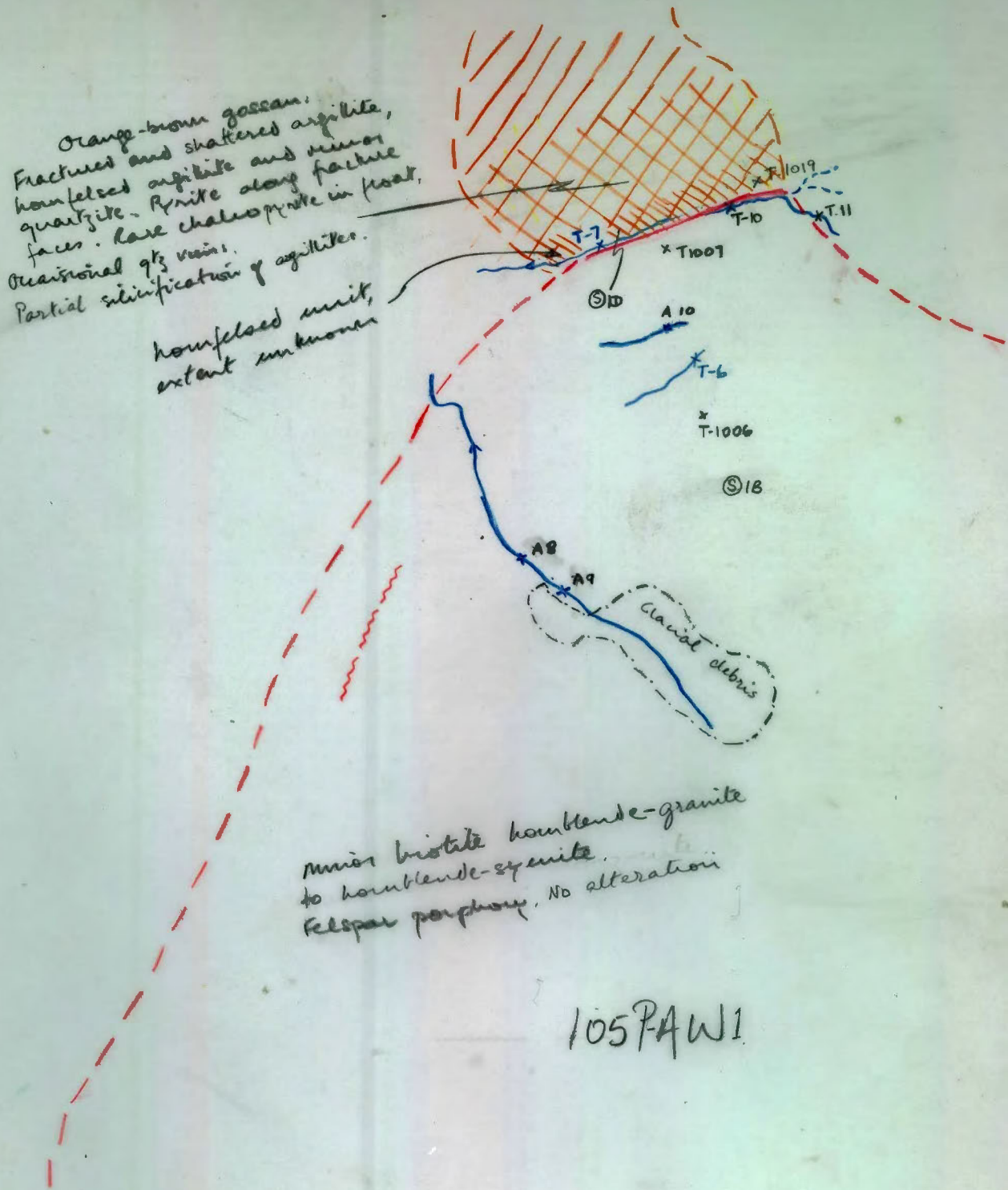
A12188-229

Orange-brown gossan.
Fractured and shattered argillite,
hornfelsed argillite and minor
quartzite. Pyrite along fracture
faces. Rare chalcoprite in host.
Occasional qtz veins.
Partial silicification of argillites.

hornfelsed unit,
extent unknown

minor biotite hornblende-granite
to hornblende-syenite.
Felspar porphyry. No alteration

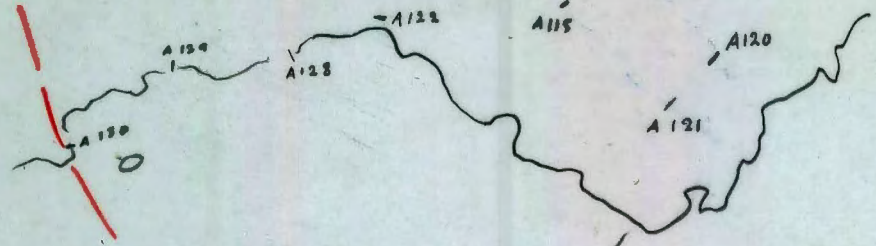
105PAW1





A103
A111
A116
A112
A117
A117
A113
A114
A119

Sediments



Granite
→ *granite*

A E S
↓

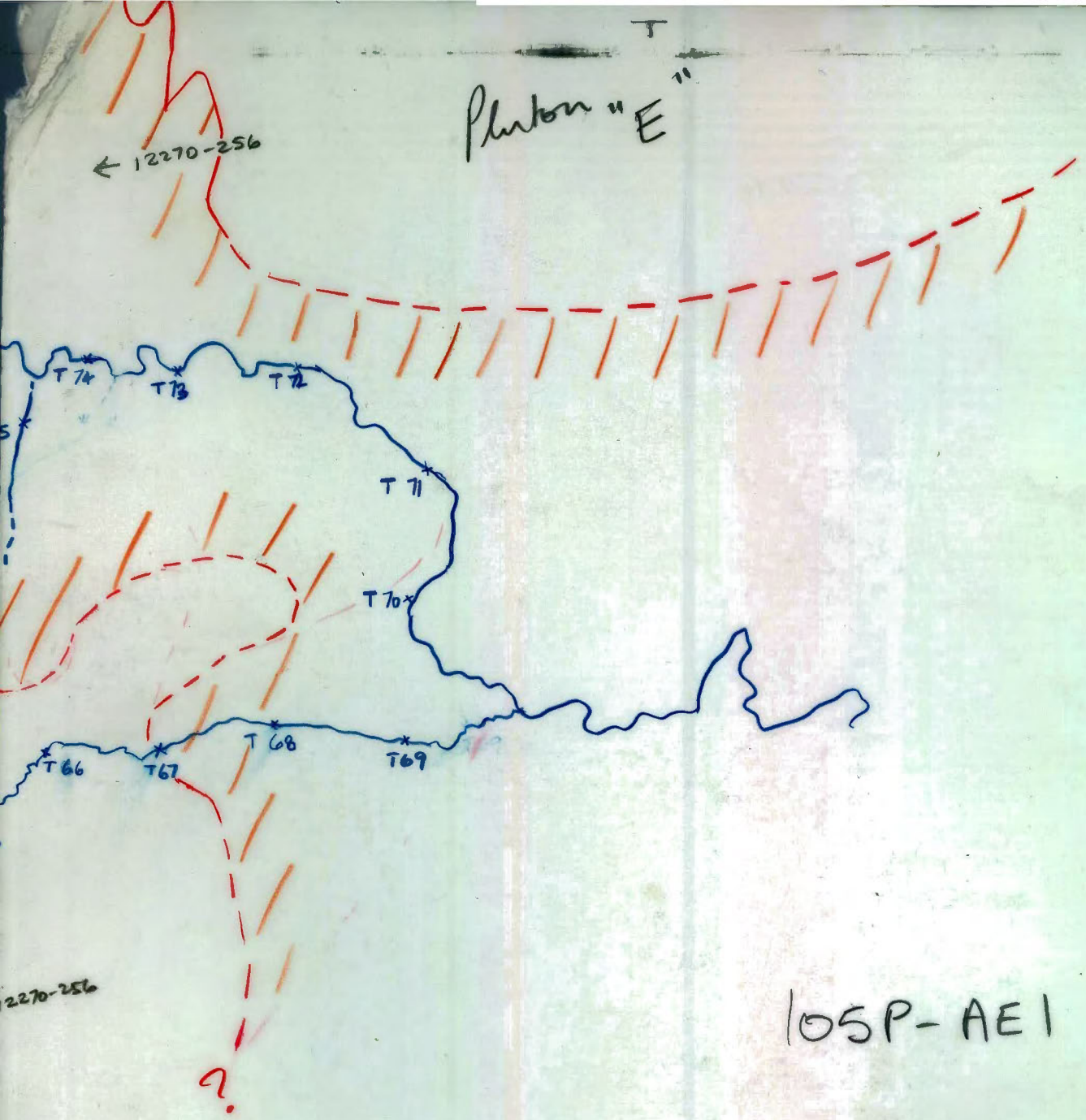
A12270-254

A12247-388



Photon "E"

← 12270-256



OSP-AE1

RS
19.

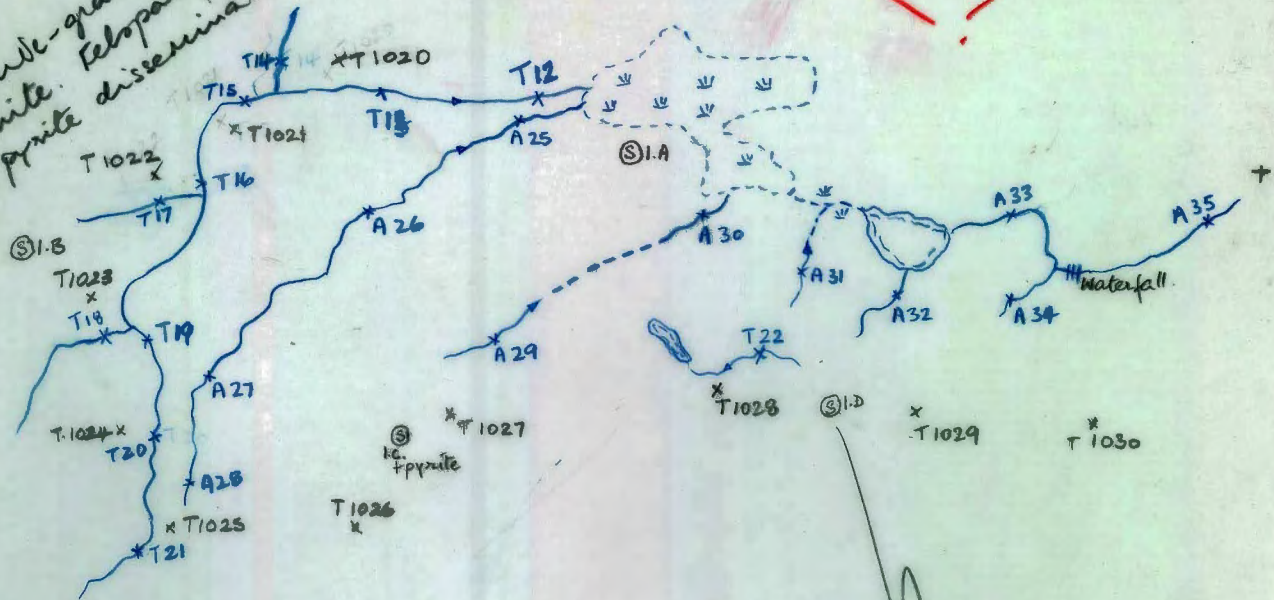


2270-256



Argillite, shale,
banded chert?

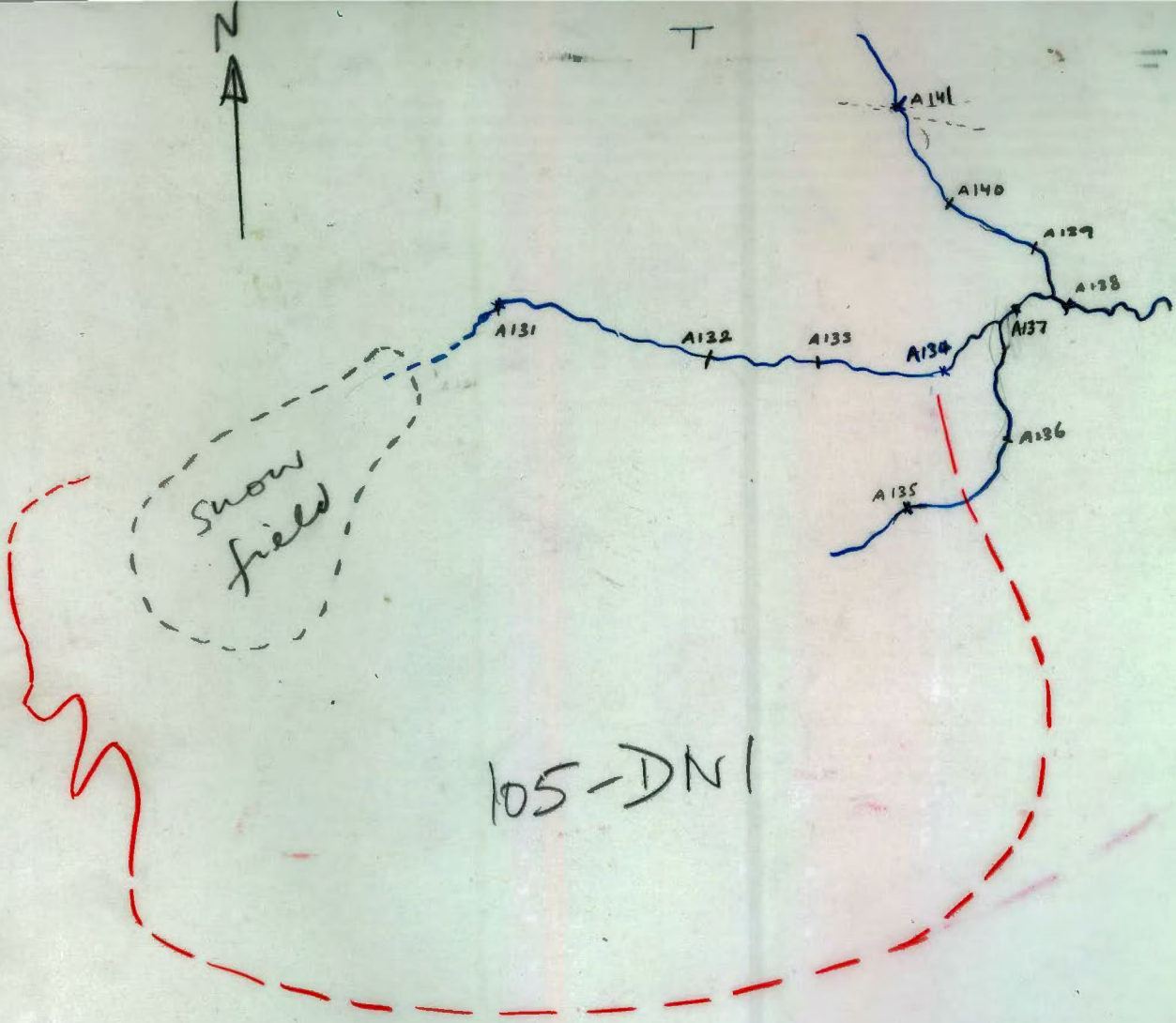
hornblende-granite
to syenite.
V. rare pyrite disseminated.



105P-BN1

hornblende → biotite?

A 12247-387



snow field

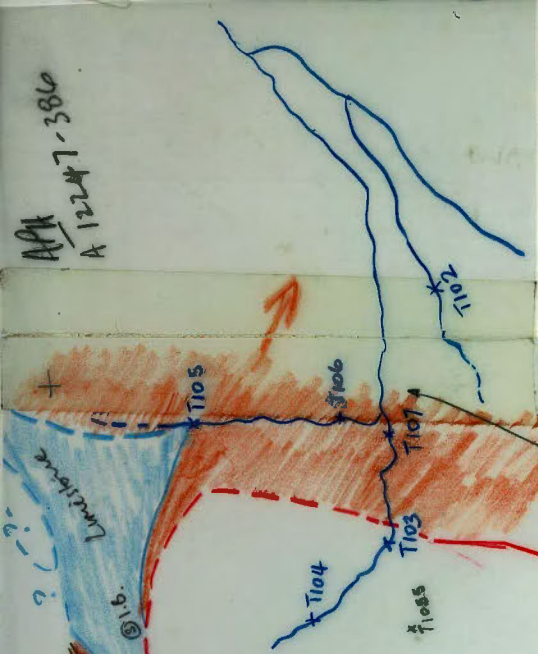
105-DN1



T

T

APX
A 12247-386



2-3 year
old campsite

A 12247-386

see also



2 ↑

1050-CM1

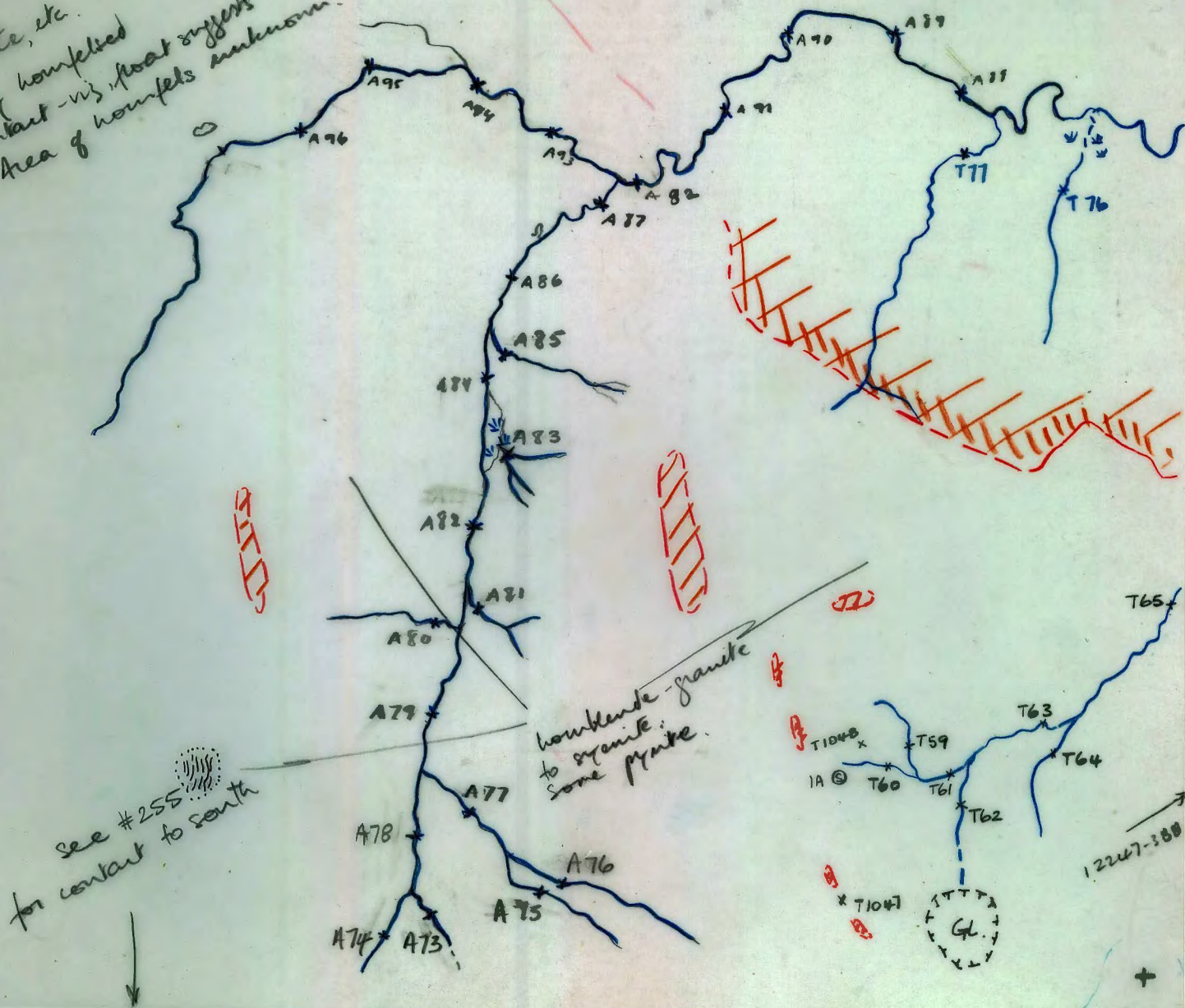
light grey - carbon quartzite
light blue &
caliche veins
"horizon" horizontal
"limonite" orange

A12270-257

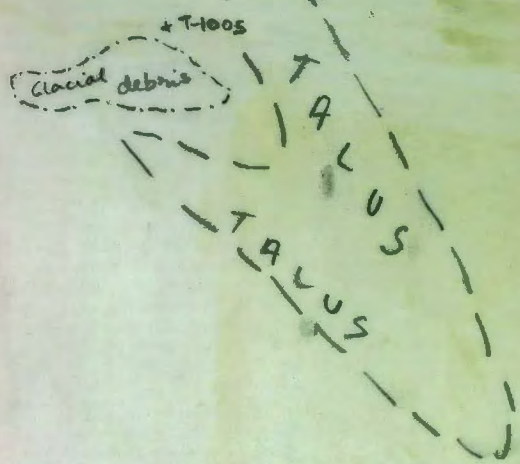
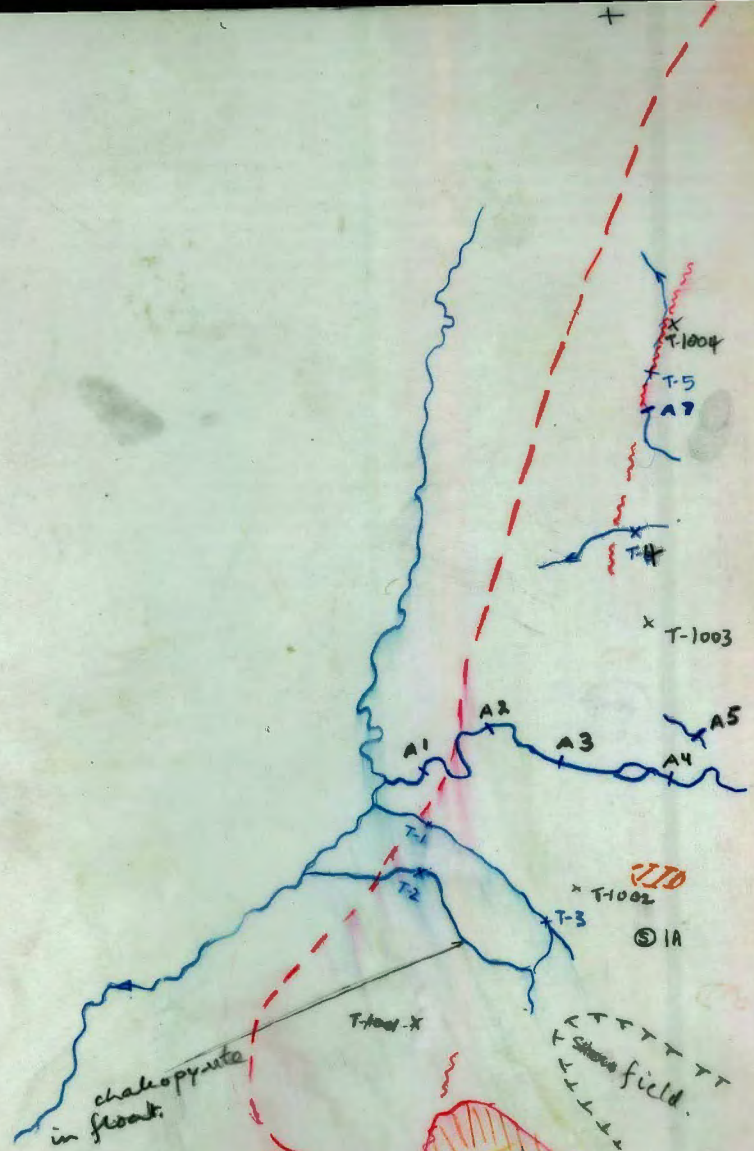
105P-AE1

12247-388

agilita, etc.
possibly homfeld
at contact - vs float suggests
this; Area of homfelds unknown

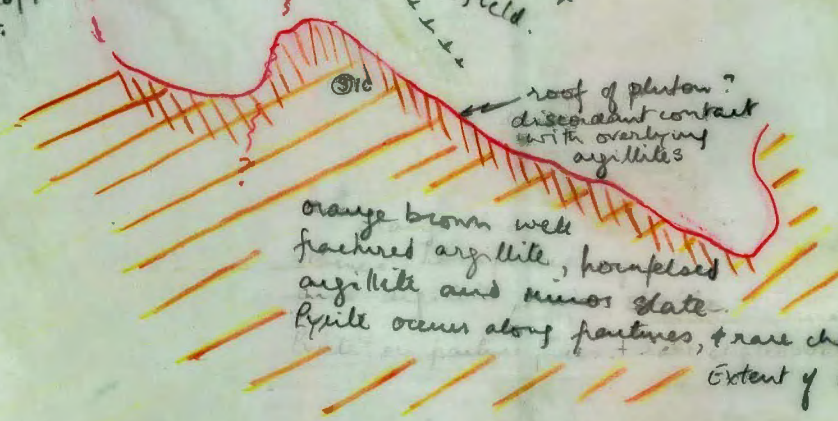


A122710-256



Minor biotite hornblende-granite
to hornblende granite.
Felspar porphyry

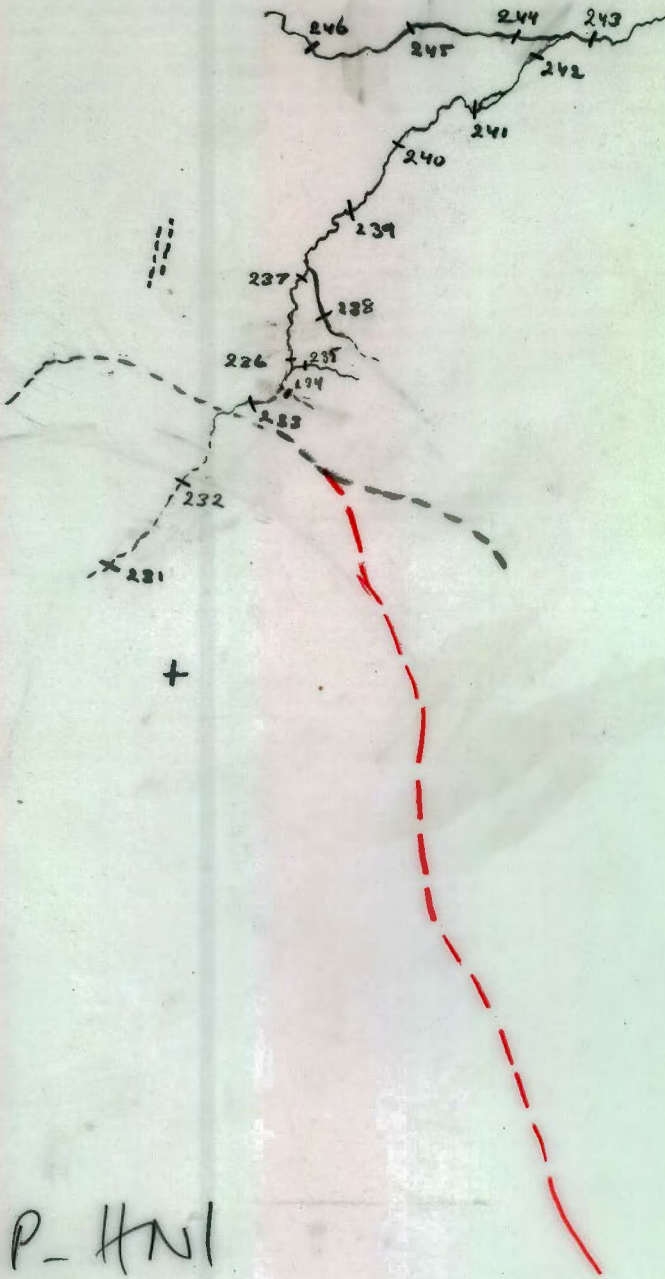
105 P-AW1



orange brown well
fractured argillite, hornfelsed
argillite and minor slate.
Pyrite occurs along fractures, + rare chaleopyrite.
Extent of hornfelsed unit unknown.

roof of pluton?
discordant contact
with the overlying
argillites

A12232-452



105 P - HNI

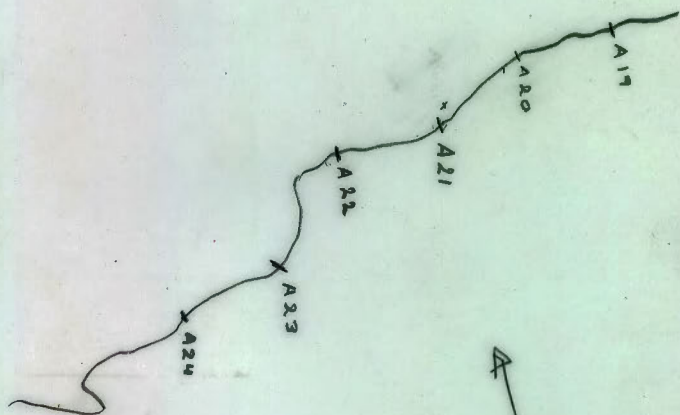
105P-AW2

N



A12188-230

N



A12188-232

A12188-228

+

A70
A71
A72
A73

A64 - A65

A66

-A67

-A68

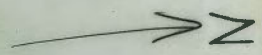
-A63

A62 → SLATE

A61 → CONCRETE

A60

A59



-A58

-A57

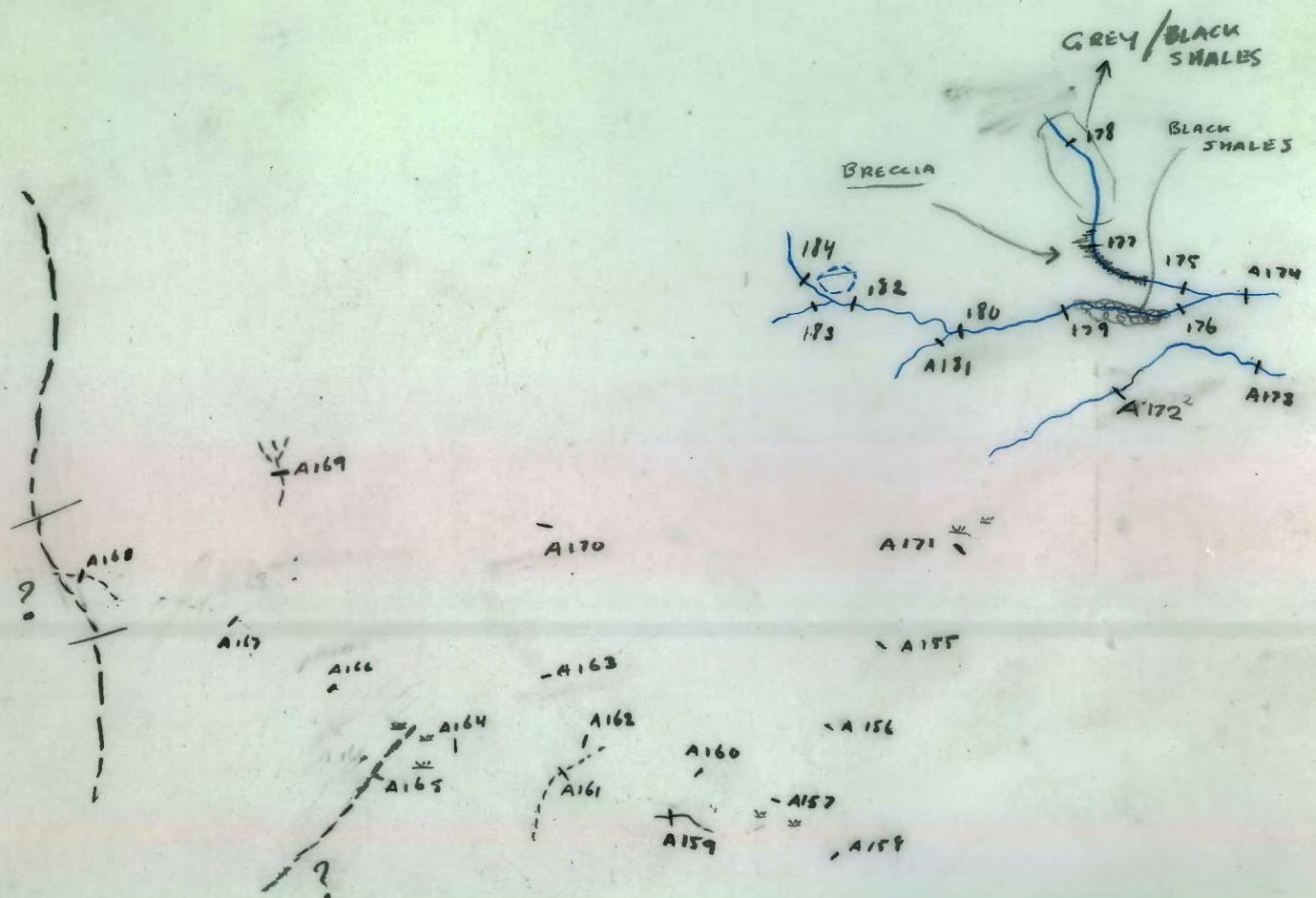
A56
A55
A54

-A54

-A53

+

A12232-462



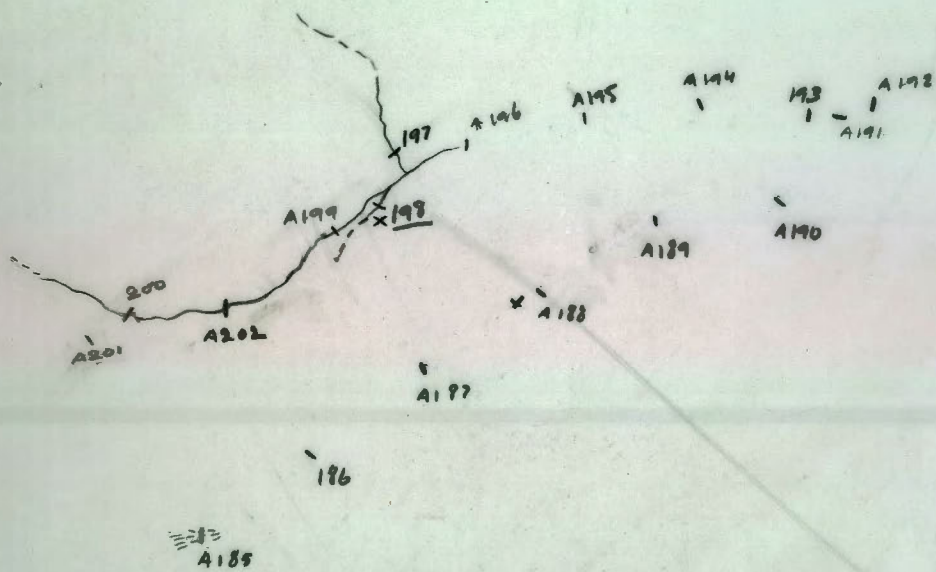
4



+



A12232-451

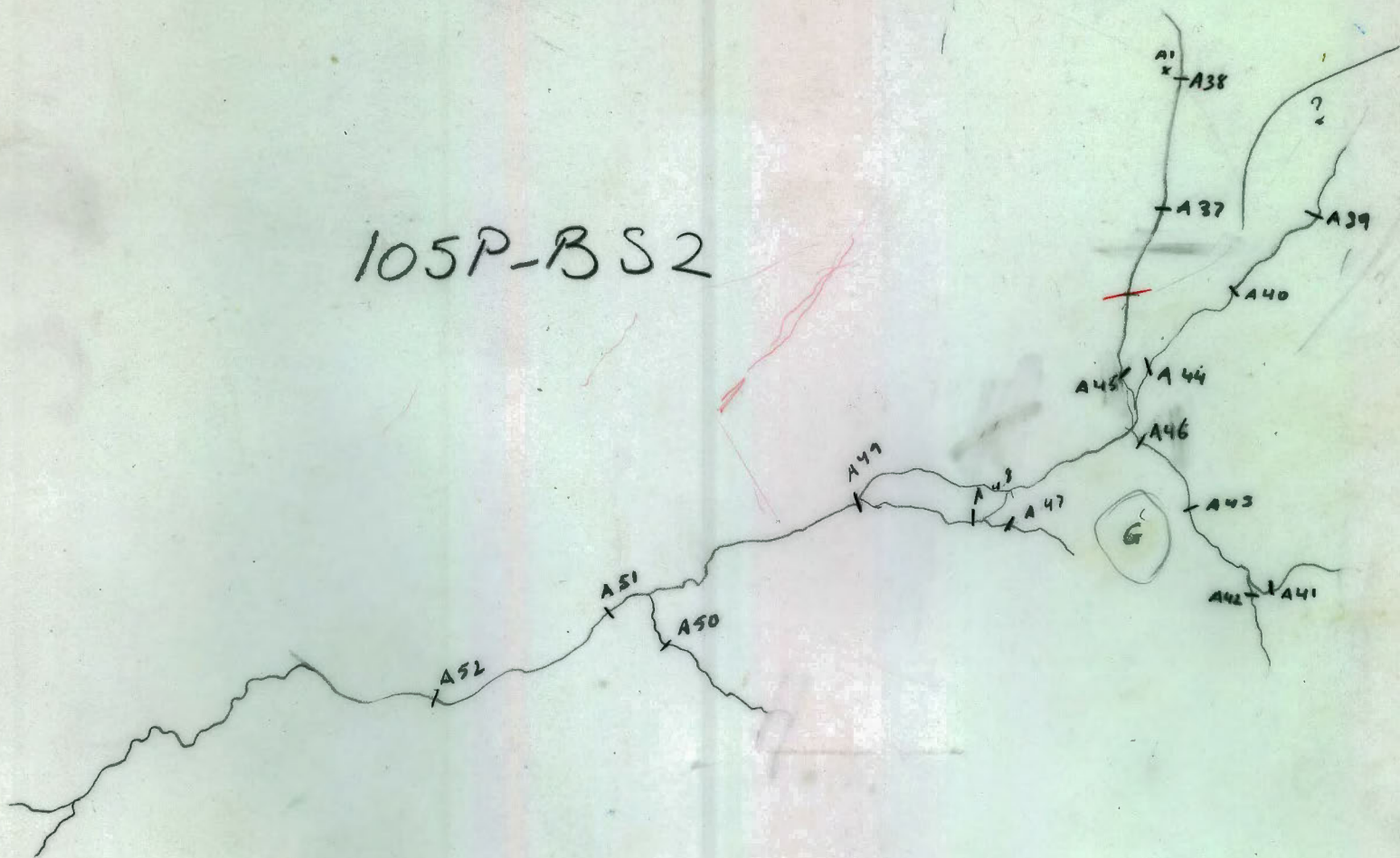


+

+

+

105P-BS2

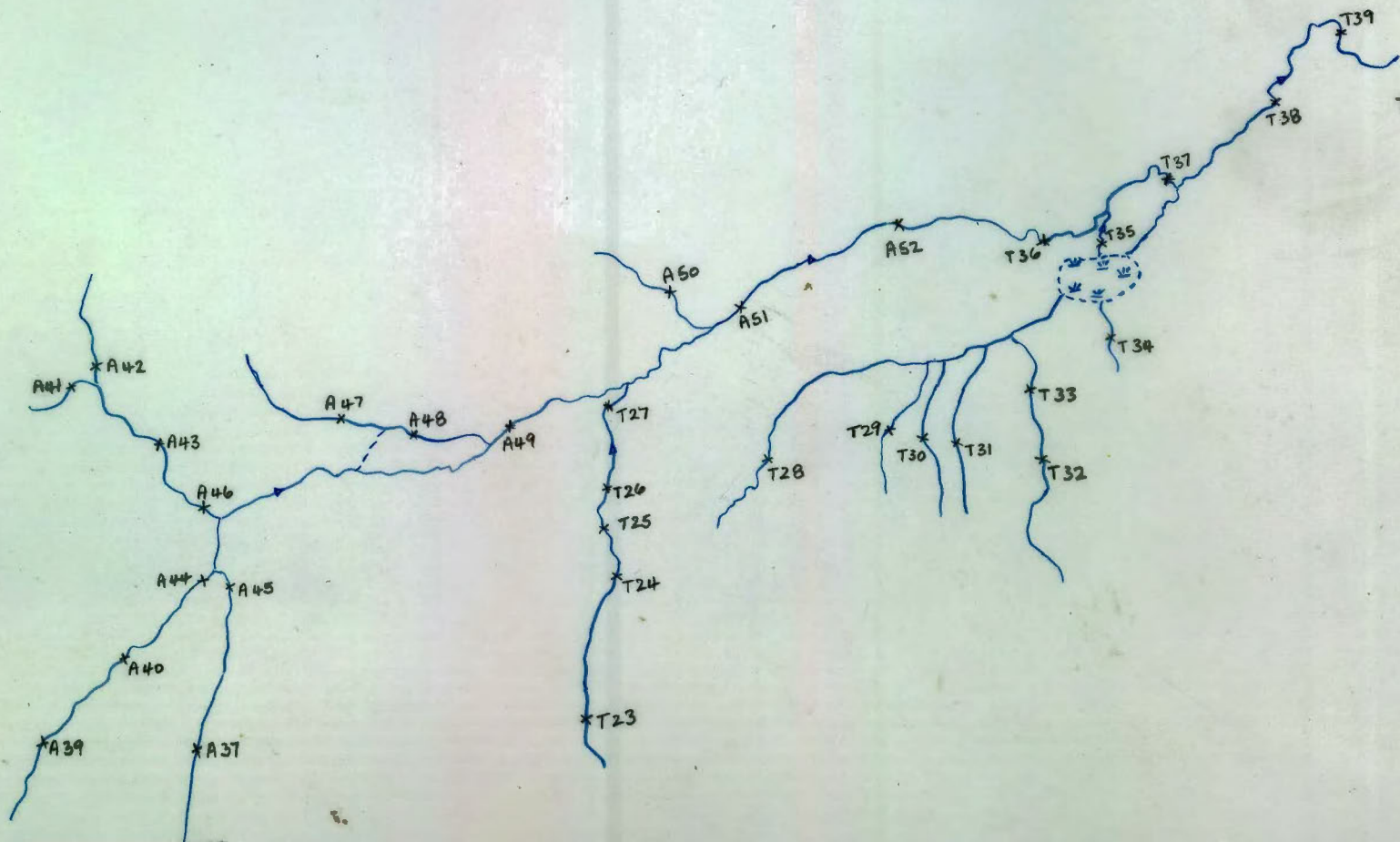


AP255-79





105P-BS2



105P-BN1



A12227-459

105P-BS2

A 12255-78

