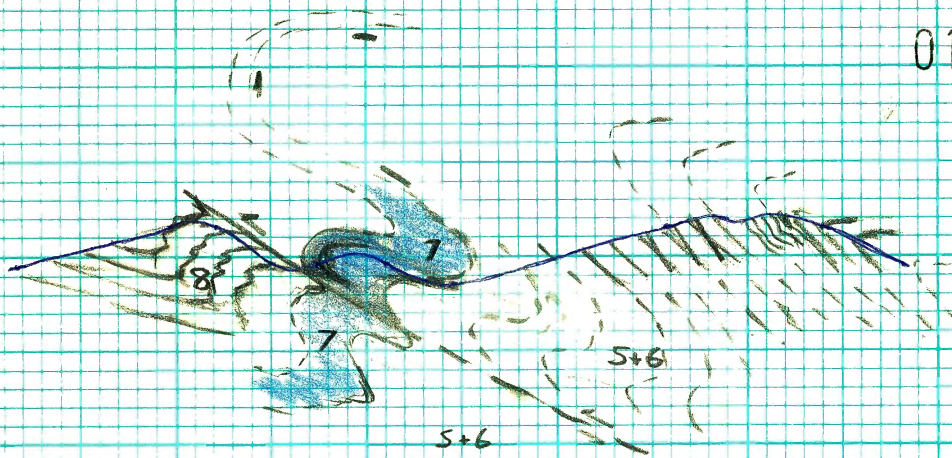


(N)
A

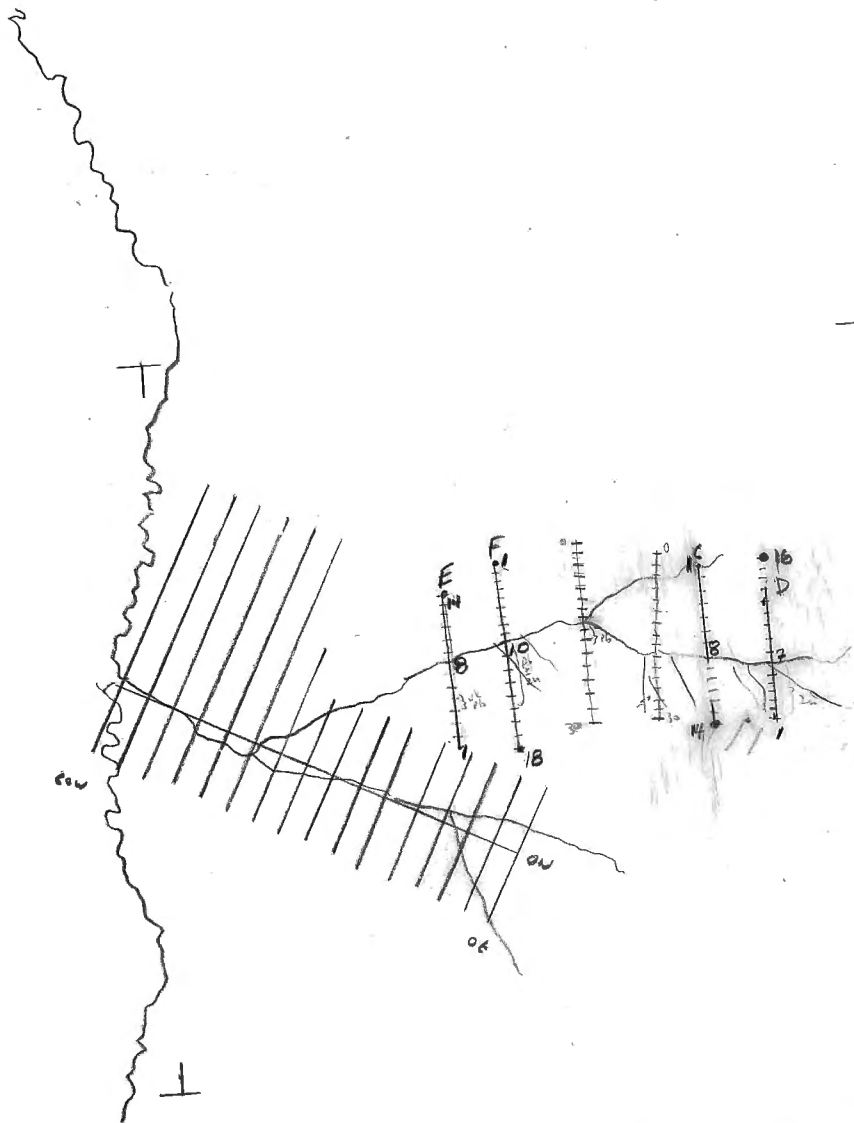
(S)
B

015586

6000
5500
5000
4500
4000
3500
3000



Yat. Area
bordering SE



H.H. - AUG 27 / 75

EY 75

200' spacing

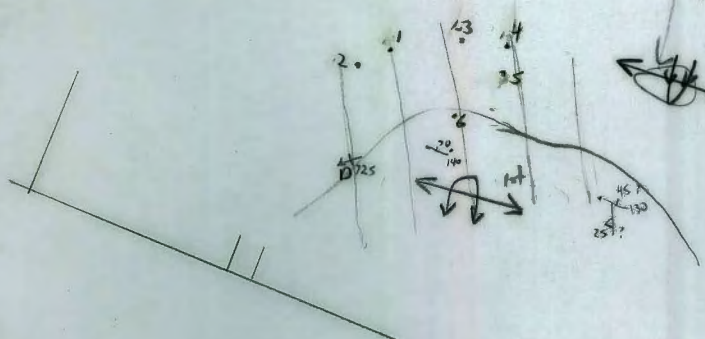
NW 22974-4-108
all stations #3 Y-

Yeti Area

mountain
folds

somewhat
rusty
lumpy
bedded cherts probably
varved
unit


1966
Annual
yeti
grid

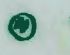


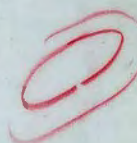
bedded
chert

45
30
25

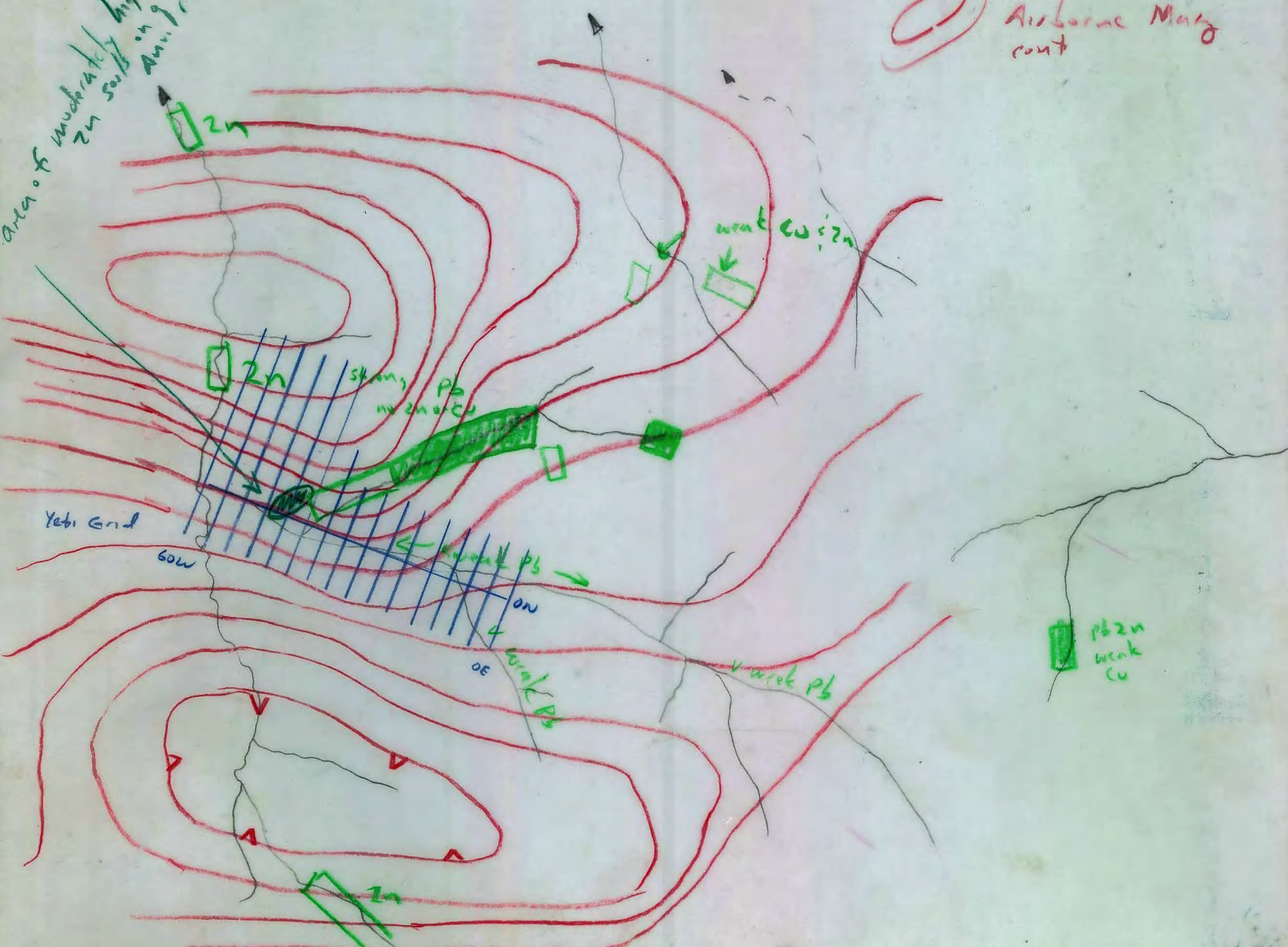


 silt geochronology station

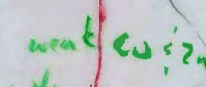
 Yeti Gossan

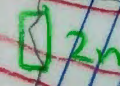
 Gort. Airborne Magnet

Area of moderate Zn sulfide in gld
Auriferous map



 2n

 weak Cu Zn

 2n

stony Pb
in Zn & Cu

Yeti Gnd

60W

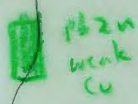
weak Pb

on

60E

weak Pb

weak Pb

 Pb Zn
weak
Cu

