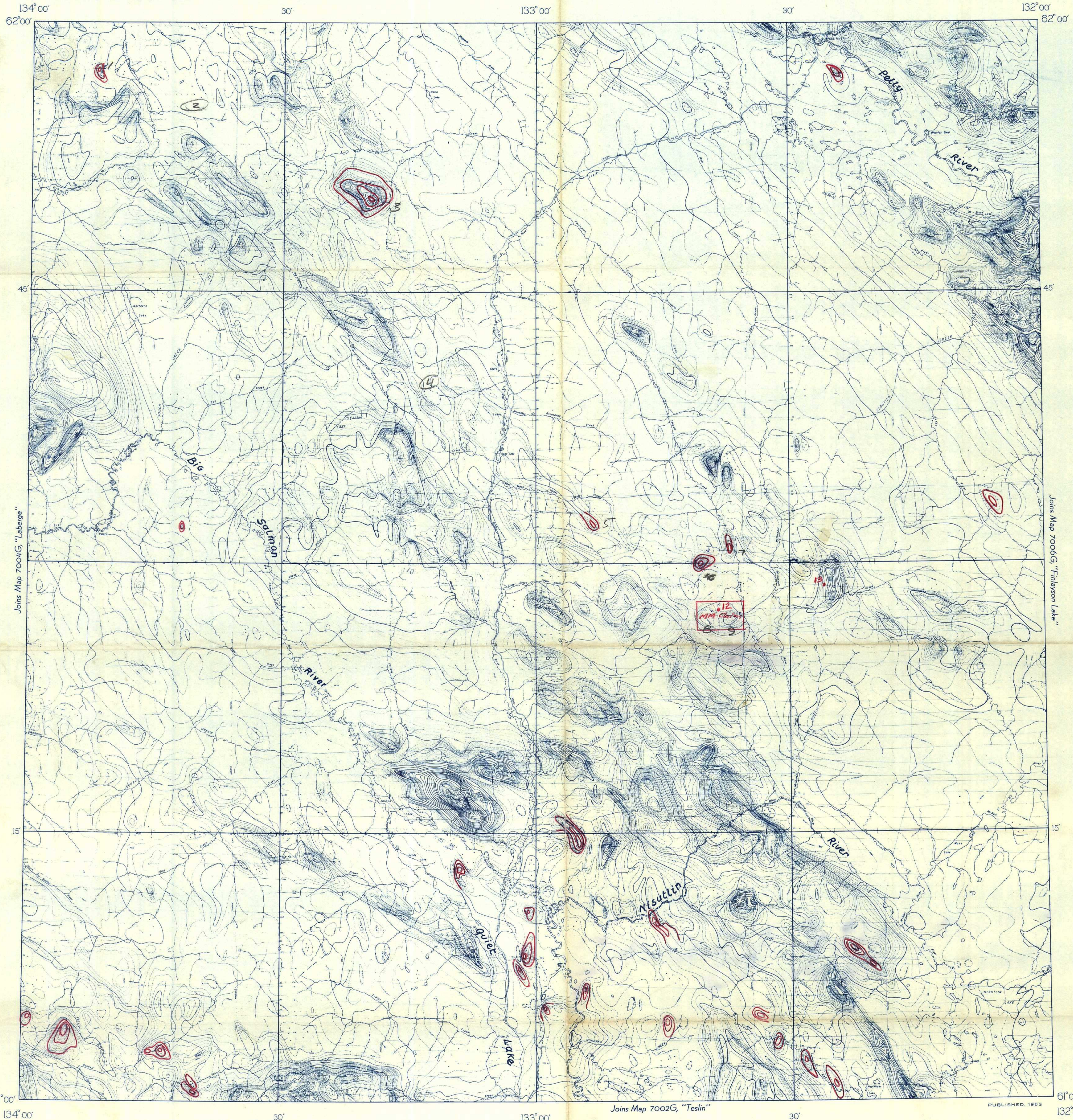




GEOLOGICAL SURVEY OF CANADA  
DEPARTMENT OF MINES AND TECHNICAL SURVEYS

AEROMAGNETIC SERIES

SHEET 105F

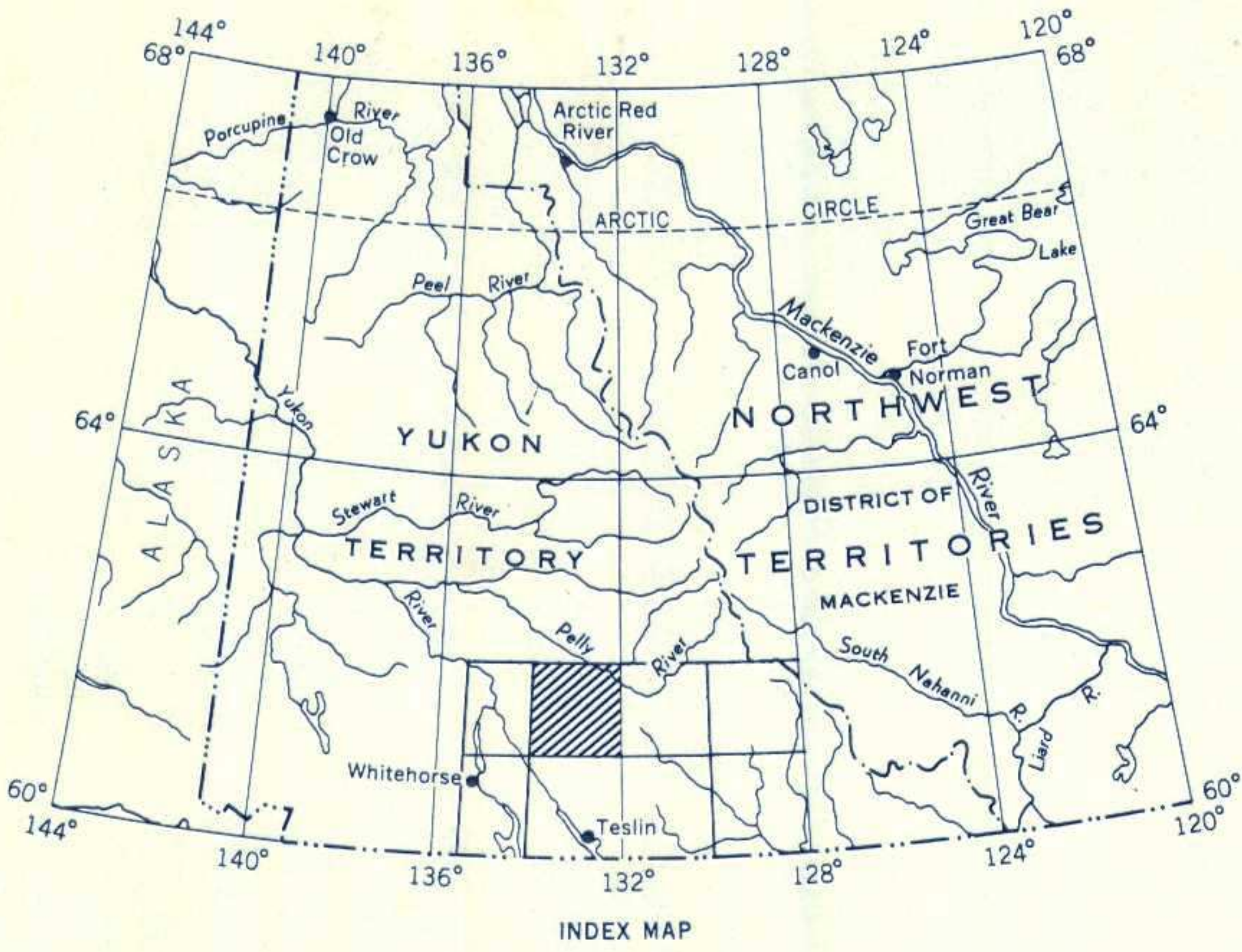


Joins Map 7004G, "Laberge"

Joins Map 7006G, "Finlayson Lake"

Joins Map 7002G, "Teslin"

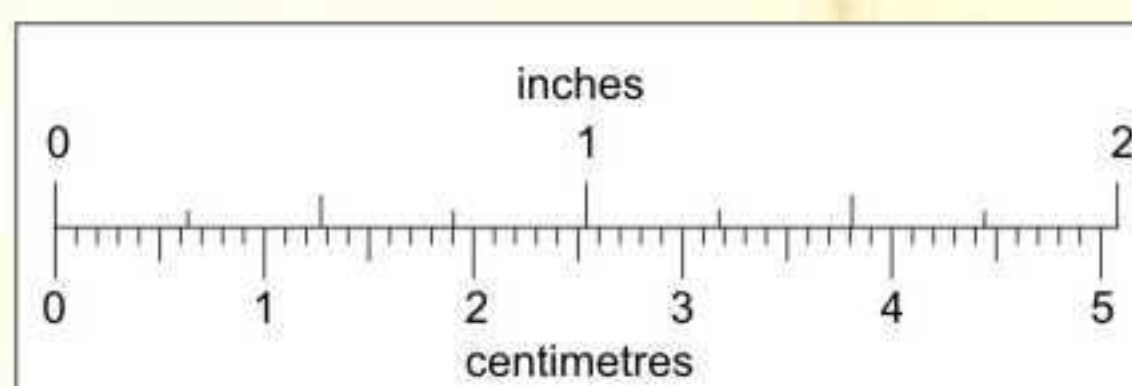
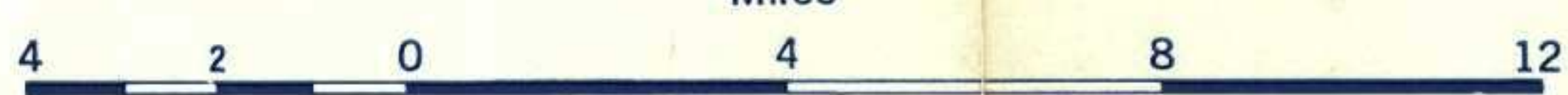
PUBLISHED, 1963



MAP 7005G

### QUIET LAKE YUKON TERRITORY

Scale: One Inch to Four Miles =  $\frac{1}{253,440}$   
Miles



This reference scale bar has been added to the original image. It will scale at the same rate as the image, therefore it can be used as a reference for the original size.

Airborne magnetic survey, June to September, 1961, by Aero Surveys Ltd. Vancouver; four mile map compiled from one inch to one mile geophysical maps published by the Department of Mines and Technical Surveys  
No correction has been made for regional variation

GEOPHYSICS PAPER 7005G  
QUIET LAKE  
YUKON TERRITORY  
SHEET 105F

015677

Figure: 4