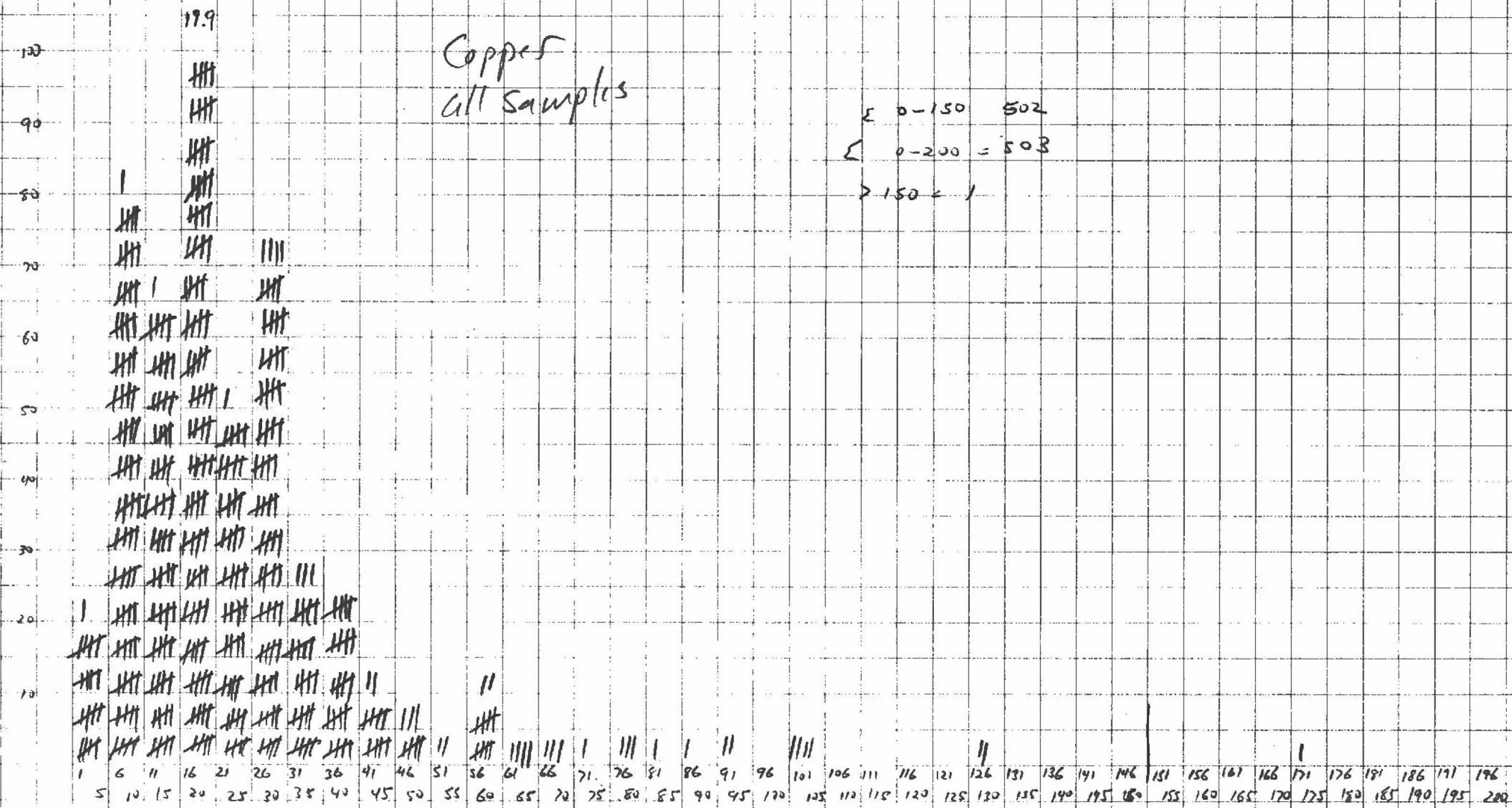


4.2 16.1 13.1 17.9 10.2 14.9 5.6 5.0 2.4 1.6 0.4 2.4 0.8 0.6 0.2 0.6 0.2 0.2 0.4 0 0.8 0 0 0 0 0.4 0 0 0 0  
 21 81 66 100 51 75 28 25 12 8 2 12 4 3 1 3 1 1 2 0 4 0 0 0 0 2 0 0 0 0 0 0 0 0 0 0 0 0 0 0 0 0 0

Nor Claims

Copper  
 all samples

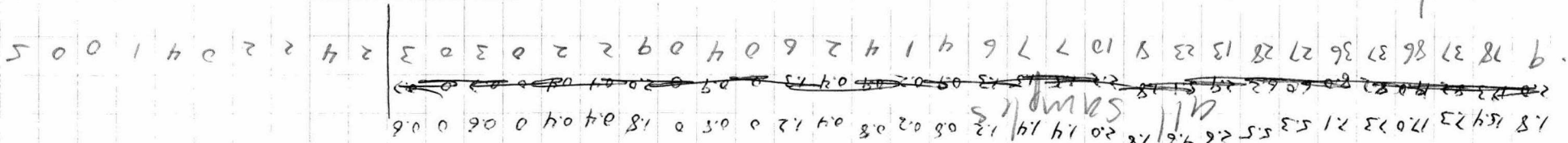
Σ 0-150 = 502  
 Σ 0-200 = 503  
 > 150 = 1



NOR - 015812  
 108K/7

Not Clean

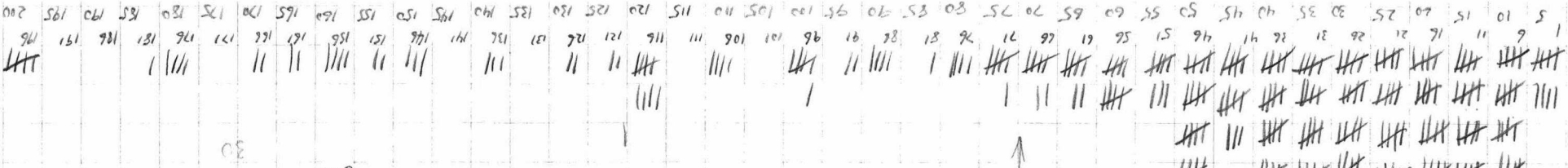
Load



$\Sigma 0-150 = 452$   
 $\Sigma 0-200 = 472$   
 $\Sigma \text{all} = 585$   
 $> 150 = 53$   
 with 10.5%

400	2700	210
250	700	380
320	1420	340
290	320	320
960	340	480
220	230	320
300	340	3500
320	4720	210
500	210	290
230	285	340
280	300	760
300	600	

$> 200 = 33$   
 $> 1000 = 3$



2202643172

# No. Claims Zinc all samples

$$\frac{p}{\text{tot}} \times 100 = 8$$

$$p \times \frac{100}{\text{tot}} = 8$$

$$\frac{100}{454}$$

0-400  $\Sigma = 463$   
 41  $\Sigma = 505$   
 0-350  $\Sigma = 454$   
 >350  $\Sigma = 51 = 10.1\%$

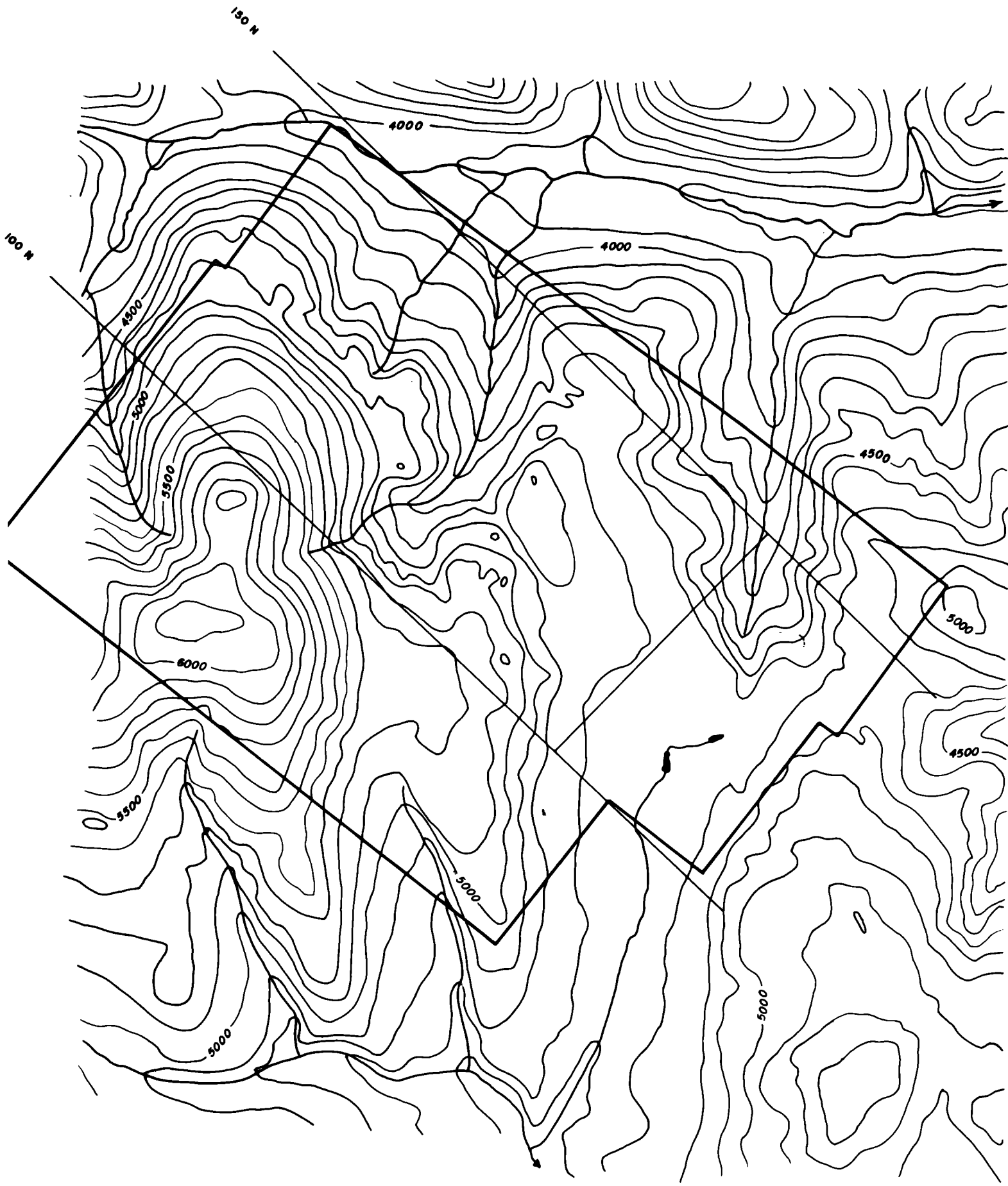
4.4 2.8 4.4 3.8 5.0 4.8 4.2 6.5 4.8 4.2 4.2 3.2 3.8 3.0 5.0 3.6 2.6 1.2 2.6 2.4 0.6 0.8 1.4  
~~4.8 4.2 4.0 4.2 5.5 5.8 5.2 4.6 4.6 5.5 4.2 5.2 5.5 4.0 4.7 1.5 2.7 2.6 0.7 1.3~~  
 22 19 22 19 25 24 21 33 24 21 21 16 19 15 25 18 13 6 13 12 3 4 7

690 710 1100  
 510 690 430  
 790 920 540  
 790 780 530  
 1050 500  
 560  
 420  
 1100  
 480 700  
 270 940  
 460 1390 430  
 610 420 700  
 720 410 570  
 450 620 550  
 1100 600  
 1100 510 440  
 910 830 500  
 500

>400 = 42  
 >1000 = 6



0.6 1.4 1.4 0.6 1.4 0.2 1.6  
~~0.5 1.5 1.5 1.5 1.5 0.5 1.8 0.6 0.6 0.7 0.8 0.8~~  
 3 7 7 3 7 1 8 3 3 2 4 4 2 3 2 0 2



CYPRUS ANVIL GEOCHEM REPORT  
 ANALYSES BY: *Acme Labs*  
 ANALYST: *N.P. Ching*

FILE NUMBER: *A-5059*  
 DATE SAMPLES RECEIVED: *9-8-75*  
 DATE REPORT SENT: *13-8-75*

SAMPLE NAME								GRID CO-ORDINATES									ONE MILE MAP	pH	GEOCHEMICAL RESULTS																																		VALUE				SPARE	ROW NUMBER
PROPERTY	YEAR	SAMPLER	NUMBER	TYPE	LATITUDE	N S	LONGITUDE	E W	Example:					pH	COPPER (ppm) Extraction:	LEAD (ppm) Extraction:	ZINC (ppm) Extraction:																																			No.	C	P	Z			
									1	2	3	4	5					34	35	36	37	38	39	40	41	42	43	44	45	46	47	48	49	50	51	52	53	54	55	56	57	58	59	60	61	62	63	64	65	66	67					68	69	
EN75								10000N		4000E						174	24	116																																								
								102							46	22	380																																									
								104							24	32	184																																									
								106							26	44	170																																									
								108							38	74	250																																									
								110							64	122	110																																									
								112							34	60	230																																									
								114							28	130	120																																									
								116							60	280	500																																									
								118							76	100	350																																									
								120							102	150	440																																									
								122							20	182	600																																									
								124							24	230	550																																									
								126							30	500	360																																									
								128							42	120	570																																									
								130							80	120	700																																									
								132							44	100	350																																									
								134							44	90	310																																									
								136							36	20	106																																									
								138							22	22	120																																									
								14000N		4000E					30	44	230																																									
BL								10000N		4800E					56	20	150																																									
								118							26	50	150																																									
								120							34	16	40																																									
								122							40	50	200																																									
								124							28	50	210																																									
EN75								12600N		4800E					14	24	40																																									



P3

R-5059  
9-8-75  
13-8-75  
DATE REPORT SENT

CYPRUS ANVIL GEOCHEM REPORT  
ANALYSES BY  
AP Chetty

SAMPLE NAME		GRID CO-ORDINATES		ONE MILE MAP	PH	GEOCHEMICAL RESULTS			VALUE	SPARE			
PROPERTY	YEAR	NUMBER	TYPE	LATITUDE	LONGITUDE	Example	COPPER (ppm)	LEAD (ppm)	ZINC (ppm)	No	C	P	Z
		1075		13000N	5400E		104	1420	1390				
		32					20	50	260				
		34					14	24	470				
		135					18	40	260				
		138					16	20	180				
		140					14	10	62				
		142					8	10	30				
		14400N		5600E			4	10	60				
		10800N		6400E			40	30	120				
		110					16	10	88				
		112					20	12	70				
		114					26	10	50				
		116					32	20	184				
		118					14	10	40				
		120					16	10	58				
		122					4	4	12				
		124					24	40	240				
		26					26	40	200				
		128					8	10	42				
		130					14	22	90				
		132					22	150	290				
		134					14	20	60				
		136					8	6	12				
		138					20	10	10				
		140					12	10	54				
		142					20	10	176				
		14400N		6400E			20	10	90				

ROW NUMBER

28

04

R-5059  
9-8-75  
13-8-75

CYPRUS ANVIL  
ANALYSES BY  
ANALYST: *Benji L. Chou*

1. LF NUMBER: R-5059  
2. DATA SAMPLES RECEIVED: 9-8-75  
3. DATE REPORT SENT: 13-8-75

SAMPLE NAME		GRID CO-ORDINATES		ONE MILE MAP	DM	GEOCHEMICAL RESULTS			VALUE	SPARE
PROPERTY	NUMBER	LATITUDE	LONGITUDE	Example	#2	COPIPER (ppm)	FA (ppm)	ZINC (ppm)	N. C. P. I.	ROW NUMBER
TEST	TYPE	N	E	W	3	Extraction	Extraction	Extraction		
N75		14600N	6800E			6	10	20		
		148				20	40	70		
		15000N	6400E			16	20	100		
		10000N	7200E			32	24	90		
		102				32	10	40		
		104				18	10	38		
		106				48	24	410		
		108				34	18	134		
		110				28	16	80		
		112				20	10	30		
		114				30	20	170		
		116				34	22	136		
		118				40	40	280		
		120				22	12	52		
		122				34	50	160		
		124				20	26	250		
		126				22	78	350		
		128				104	340	260		
		130				52	230	330		
		132				72	320	420		
		34				4	10	112		
		36				30	40	70		
		138				16	20	50		
		140				6	16	16		
		142				12	20	30		
		44				10	50	100		
		4600N	7200E			12	22	102		

P5

R-5059  
 FILE NUMBER  
 13-8-75  
 DATE REPORT SENT

CYPRUS ANVIL GEOCHEM REPORT  
 ANALYSES BY  
 ANALYST: *ADP Edung*

SAMPLE NAME					GRID CO-ORDINATES			ONE MILE MAP		GEOCHEMICAL RESULTS			VALUE	SPARE
PROPERTY	YEAR	SAMPLER	NUMBER	TYPE	LATITUDE		LONGITUDE			COPIES (ppm)	F.A. (ppm)	ZINC (ppm)	No. of...	SPARE
					N	E	W	S	E					
EM75					14800	9600	MS.							
					10000	9600				24	14	70		
					102					30	20	80		
					104					40	8	152		
					106					8	10	42		
					108					58	10	510		
					110					18	8	160		
					112					24	28	620		
					114					20	40	370		
					116					6	8	20		
					118					18	34	250		
					120					20	32	160		
					122					44	290	690		
					124					10	60	128		
					126					4	10	10		
					128					12	12	136		
					130					16	30	150		
					132					12	20	80		
					134					26	32	90		
					136					8	16	30		
				138					24	40	76			
				140					14	30	102			
				142					6	10	12			
				144					8	10	30			
				146					10	28	60			
				148					2	6	10			
EN75					15000	9600			12	12	20			

CYPRUS ANVIL GEOCHEM REPORT

ANALYSES BY: *[Signature]*

ANALYST: *[Signature]*

FILE NUMBER: *R0088*  
DATE SAMPLES RECEIVED: *Aug. 18, 1975*  
DATE REPORT SENT: *Aug. 25, 1975*

SAMPLE NAME					GRID CO-ORDINATES					ONE MILE MAP	pH	GEOCHEMICAL RESULTS																																		VALUE				SPARE									
PROJECT	PROPERTY	YEAR	SAMPLER	NUMBER	TYPE	LATITUDE					LONGITUDE					E W	Example:	pH	COPPER (ppm)	LEAD (ppm)	ZINC (ppm)																																			No.	C	P	Z
						N	S	N		S		I		S								34	35	36	37	38	39	40	41	42	43	44	45	46	47	48	49	50	51	52	53	54	55	56	57	58	59	60	61	62	63	64	65	66	67				
EN				75	L	9	0	0	0	N	1	2	0	0	E			18	22	120																																							
							2	2										26	16	170																																							
							4	4										20	18	220																																							
							6	6										16	20	90																																							
EN				75	L	9	8	0	0	N	1	2	0	0	E			10	8	24																																							
EN				75	L	9	0	0	0	N	1	2	8	0	E			16	70	82																																							
EN				75	L	9	2	0	0	N	1	2	0	0	E			20	16	70																																							
							4											20	14	42																																							
							6											34	70	112																																							
EN				75	L	9	8	0	0	N	1	2	8	0	E			24	24	128																																							
EN				75	L	9	0	0	0	N	1	3	6	0	E			22	18	110																																							
							2											18	14	150																																							
							4											28	22	132																																							
							6											10	10	112																																							
EN				75	L	9	8	0	0	N	1	3	6	0	E			6	10	24																																							
EN				75	L	9	6	0	0	N	1	4	4	0	E			102	6	1400																																							
							8											34	52	150																																							
							0											36	47	230																																							
							2											26	50	280																																							
							4											32	60	150																																							
							6											44	30	78																																							
							8											30	82	122																																							
							0											6	26	14																																							
							2											14	38	28																																							
EN				75	L	1	1	4										24	120	140																																							

FORM NUMBERED









CYPRUS ANVIL  
 ANALYSES BY: *Reus, dabo*  
 ANALYST: *H. P. Cherny*

FILE NUMBER: *R5068*  
 DATE SAMPLES RECEIVED: *Aug 18, 1973*  
 DATE REPORT SENT: *Aug 25, 1973*

SAMPLE NAME				GRID CO-ORDINATES				ONE MILE MAP		pH	GEOCHEMICAL RESULTS																VALUE				SPARE	FOUN. NUMBER			
PROJECT	PROPERTY	YEAR	SAMPLER	NUMBER	TYPE	LATITUDE	N	LONGITUDE	E		COPPER (ppm)	LEAD (ppm)	ZINC (ppm)																	No.	C		P	Z	
										Example:	Extraction:	Extraction:	Extraction:																						
										W	1 1 5 I 1 3 4 5																								
				EN75	L	9000N		8000E			34	22	54																						1
						92					28	18	44																						2
						74					22	18	70																						3
						96					18	30	72																						4
				EN75	L	9800N		8200E			30	24	78																						5
																																			6
				EN75	L	9000N		8800E			18	24	106																						7
						72					34	60	280																						8
						14					24	34	140																						9
						96					38	54	260																						10
				EN75	L	9800N		8600E			46	44	300																						11
																																			12
				EN75	L	9000N		9600E			28	48	190																						13
						92					26	40	126																						14
						74					8	18	30																						15
						96					6	10	12																						16
				EN75	L	9800N		9600E			26	30	100																						17
																																			18
				EN75	L	9000N		10400E			40	200	148																						19
						92					56	340	78																						20
						94					84	280	300																						21
						96					62	110	275																						22
				EN75	L	9800N		10400E			30	42	82																						23
				EN75	L	9000N		11200E			34	24	70																						24
						92					8	10	12																						25
						74					12	20	74																						26
						96					24	22	96																						27
				EN75	L	9800N		11200E			22	24	100																						28

CYPRUS ANVIL GEOCHEM REPORT  
 ANALYSES BY: *Prosser Labus*  
 ANALYST: *H.P. Chalmers*

FILE NUMBER: *R2008*  
 DATE SAMPLES RECEIVED: *Aug. 18, 1975*  
 DATE REPORT SENT: *Aug. 25, 1975*

SAMPLE NAME									GRID CO-ORDINATES									ONE MILE MAP			pH	GEOCHEMICAL RESULTS																VALUE				SPARE
PROJECT	PROPERTY	YEAR	SAMPLER	NUMBER	TYPE	LATITUDE			N	LONGITUDE			E	Example:			pH	COPPER (ppm)				LEAD (ppm)				ZINC (ppm)				No.	C	P	Z									
						10	11	12		13	14	15		16	17	18		19	20	21	22	23	24	25	26	27	28	29	30						31	32	33	34	35	36	37	38
EN	75		L			90	00	N		12	00	E				18			22			120																				
						92										26			16			170																				
						94										20			18			220																				
						96										16			20			90																				
EN	75		L			98	00	N		12	00	E				10			8			24																				
EN	75		L			90	00	N		12	00	E				16			20			82																				
EN	75		L			92	00	N		12	00	E				20			16			70																				
						94										20			14			42																				
						96										24			20			112																				
EN	75		L			98	00	N		12	00	E				24			24			128																				
EN	75		L			90	00	N		13	60	E				22			18			110																				
						92										18			14			150																				
						94										28			22			132																				
						96										10			10			112																				
EN	75		L			98	00	N		13	60	E				6			10			24																				
EN	75		L			96	00	N		14	40	E				10			6			100																				
						98										34			52			150																				
						100										36			47			230																				
						102										26			50			280																				
						104										32			60			150																				
						106										44			30			78																				
						108										30			32			122																				
						110										6			26			14																				
						112										14			38			28																				
EN	75		L			114										24			20			170																				

FORM ANVIL 6/69

SAMPLE NAME									GRID CO-ORDINATES								ONE MILE MAP	pH	GEOCHEMICAL RESULTS																														VALUE				SPARE 3																															
PROJECT	PROPERTY	YEAR	SAMPLER	NUMBER	TYPE	LATITUDE			N	LONGITUDE			E	Example: 1151345	COPPER (ppm) Extraction:	LEAD (ppm) Extraction:	ZINC (ppm) Extraction:																															No.	C	P	Z	ROW NUMBER																																
1	2	3	4	5	6	7	8	9	10	11	12	13	14	15	16	17	18	19	20	21	22	23	24	25	26	27	28	29	30	31	32	33	34	35	36	37	38	39	40	41	42	43	44	45	46	47	48	49	50	51	52	53	54	55	56	57	58	59	60	61	62	63	64	65	66	67	68	69	70	71	72	73	74	75	76	77	78	79	80					
EN		75			L	116	00	M	N					144	00	E				36	120	150																																																														
																				36	160	230																																																														
																				28	120	150																																																														
																				8	20	32																																																														
																				24	52	184																																																														
																				16	14	160																																																														
																				16	36	400																																																														
																				18	38	380																																																														
																				16	20	104																																																														
																				32	34	130																																																														
																				24	30	110																																																														
																				22	22	80																																																														
																				18	24	126																																																														
																				14	10	52																																																														
																				14	12	80																																																														
																				16	16	110																																																														
																				30	12	92																																																														
																				8	6	24																																																														
	HEK							L		0000	S			9620	W				20	28	72																																																															
																				22	30	72																																																														
																				20	28	72																																																														
																				22	28	74																																																														
																				20	26	70																																																														
																				20	24	70																																																														
																				20	24	70																																																														
																				20	24	74																																																														
																				20	28	72																																																														
																				20	28	68																																																														









P.2

FILE NUMBER: A 200  
 DATE SAMPLES RECEIVED: 6-8-75  
 DATE REPORT SENT: 8-8-75

CYPRUS ANVIL GEOCHEM REPORT  
 ANALYSES BY: Acme Labs  
 ANALYST: H. P. Chung

SAMPLE NAME				GRID CO-ORDINATES													ONE MILE MAP	pH	GEOCHEMICAL RESULTS																				VALUE				SPARE	ROW NUMBER																										
PROJECT	PROPERTY	YEAR	SAMPLER	NUMBER	TYPE	LATITUDE						N	LONGITUDE						E	Example: W 1 1 5 I 1 3 4 5	eg: 4 5	COPPER (ppm) Extraction:	LEAD (ppm) Extraction:	ZINC (ppm) Extraction:																					No.	C	P	Z																						
						10	11	12	13	14	15		16	17	18	19	20	21							22	23	24	25	26	27	28	29	30	31	32	33	34	35	36	37	38	39	40						41	42	43	44	45	46	47	48	49	50	51	52	53	54	55	56	57	58	59	60	61	62
EN	75				S	1	1	0	0	0	N	2	0	0	0	0	E	10	5	K	0	7	ND			30		26		170																																								
						1	1	2																		32		44		210																																								
						1	1	4																		16		22		72																																								
						1	1	6																		30		42		170																																								
						1	1	8																		28		104		132																																								
						1	2	0																		18		22		118																																								
						1	2	2																		18		26		132																																								
						1	2	4																		34		34		210																																								
						1	2	6																		6		12		22																																								
						1	2	8																		4		10		10																																								
						1	3	0																		16		22		72																																								
						1	3	2																		12		14		224																																								
						1	3	4																		8		12		42																																								
						1	3	6																		4		12		22																																								
						1	3	8																		14		24		116																																								
						1	4	0																		20		18		130																																								
						1	4	2																		26		20		32																																								
						1	4	4																		14		12		48																																								
						1	4	6																		26		16		74																																								
						1	4	8																		32		22		130																																								
						1	5	0	0	0	N	2	0	0	0	0	E									20		24		108																																								
						1	0	0	0	0	N	2	0	8	0	0	E									22		16		138																																								
						1	0	2																		30		20		190																																								
						1	0	4																		16		16		90																																								
						1	0	6																		12		8		32																																								
						1	0	8																		26		24		130																																								
EN	75					1	1	0	0	0	N	2	0	8	0	0	E									26		42		205																																								

X











P 8

FILE NUMBER: R-5054  
 DATE SAMPLES RECEIVED: 6-8-74  
 DATE REPORT SENT: 8-8-74

CYPRUS ANVIL GEOCHEM REPORT  
 ANALYSES BY: Alime Labs  
 ANALYST: H.P. Chung

SAMPLE NAME					GRID CO-ORDINATES								ONE MILE MAP		pH	GEOCHEMICAL RESULTS												VALUE				SPARE				ROW NUMBER																																											
PROJECT	PROPERTY	YEAR	SAMPLER	NUMBER	LATITUDE								LONGITUDE								Example:		eg:	COPPER (ppm)				LEAD (ppm)				ZINC (ppm)					No. C P Z																																										
1	2	3	4	5	6	7	8	9	10	11	12	13	14	15	16	17	18	19	20	21	22	23	24	25	26	27	28	29	30	31	32	33	34	35	36		37	38	39	40	41	42	43	44	45	46	47	48	49	50	51	52	53	54	55	56	57	58	59	60	61	62	63	64	65	66	67	68	69	70	71	72	73	74	75	76	77	78	79
EN75					11000								25600								E10SK07ND			84				380				450												1																																			
					112																			36				80				42												2																																			
					114																			22				24				44												3																																			
					116																			12				18				52												4																																			
					118																			44				480				140												5																																			
					120																			6				8				10												6																																			
					122																			20				16				58												7																																			
					124																			18				18				40												8																																			
					126																			8				6				12												9																																			
					128																			8				10				24												10																																			
					130																			6				6				26												11																																			
					132																			34				28				130												12																																			
					134																			48				22				132												13																																			
					136																			18				16				100												14																																			
					138																			38				20				182												15																																			
					140																			44				8				102												16																																			
					142																			12				6				48												17																																			
					144																			62				10				200												18																																			
					146																			6				6				20												19																																			
					148																			26				12				290												20																																			
EN75					15000								25600								E			50				20				510												21																																			
																																												22																																			
																																												23																																			
																																												24																																			
																																												25																																			
																																												26																																			
																																												27																																			
																																												28																																			
																																												29																																			
																																												30																																			







P4

FILE NUMBER: R 5063  
DATE SAMPLES RECEIVED: 12-8-75  
DATE REPORT SENT: 1-8-76

CYPRUS ANVIL GEOCHEM REPORT  
ANALYSES BY: Agood  
ANALYST: H. P. Cherry

SAMPLE NAME				GRID CO-ORDINATES				ONE MILE MAP		PH	GEOCHEMICAL RESULTS																VALUE				SPARE				ROW NUMBER			
PROPERTY	YEAR	SAMPLER	NUMBER	TYPE	LATITUDE	LONGITUDE	E	W	pH	COPPER (ppm)	LEAD (ppm)	ZINC (ppm)																	Cu	Co	P	Zn						
Example:																																						
EN75					13400N	11200E					14	48	100																									1
					136					4	8	10																									2	
					138					10	20	52																									3	
					140					16	18	50																									4	
					142					12	20	42																									5	
					144					14	28	160																									6	
					146					16	17	58																									7	
					148					16	16	88																									8	
					15000N	11200E				12	18	60																									9	
					10400N	12000E				16	22	152																									10	
					106					8	14	68																									11	
					108					24	26	178																									12	
					110					16	14	74																									13	
					112					40	12	154																									14	
					114					26	22	330																									15	
					116					18	22	360																									16	
					118					22	20	140																									17	
					120					14	26	100																									18	
					122					26	100	142																									19	
					124					4	6	6																									20	
					126					4	8	10																									21	
					128					20	50	72																									22	
					130					26	32	94																									23	
					132					26	40	295																									24	
					134					6	6	27																									25	
					136					8	6	48																									26	
EN75					13800N	12000E				24	22	160																									27	





P7

FILE NUMBER: R-5063  
 DATE SAMPLES RECEIVED: 14-8-75  
 DATE REPORT SENT:

CYPRUS ANVIL GEOCHEM REPORT  
 ANALYSES BY: [Signature]  
 ANALYST: [Signature]

SAMPLE NAME				GRID CO-ORDINATES													ONE MILE MAP	pH	GEOCHEMICAL RESULTS																			VALUE				SPARE															
FACILITY	PROPERTY	YEAR	SAMPLER	NUMBER	TYPE	LATITUDE											N		LONGITUDE											E	COPPER (ppm)	LEAD (ppm)	ZINC (ppm)																				No.	C	P	Z	ROW NUMBER
						Example: 1 1 5 1 3											W	4	5	Extraction:	Extraction:	Extraction:																																			
EN	15					14	8	0	0	N	15	2	0	0	E		12	34	58																								1														
						15	0	0	0	W	15	2	0	0	E		14	20	74																								2														
						10	0	0	0	N	16	0	0	0	E		16	20	116																								4														
						10	2										18	18	114																								5														
						0	4										20	12	110																								6														
						10	6										22	16	98																								7														
						10	8										16	18	86																								8														
						11	0										16	32	92																								9														
						11	2										12	32	62																								10														
						11	4										8	32	40																								11														
						11	6										4	8	8																								15														
						11	8										4	12	12																								15														
						12	0										30	210	132																								16														
						12	2										16	62	68																								15														
						12	4										12	38	68																								16														
						12	6										10	48	60																								17														
						12	8										30	34	142																								18														
						13	0										14	38	110																								19														
						13	2										28	36	150																								20														
						13	4										34	52	200																								21														
						13	6										18	4	12																								22														
						13	8										22	18	74																								23														
EN	75					15	0	0	0	N	16	0	0	0	E		20	12	76																								23														

CYPRUS ANVIL GEOCHEM REPORT  
 ANALYSES BY: **Adrian J. Lewis**  
 ANALYST: **H. P. Chalmers**  
 FILE NUMBER: **R-5063**  
 DATE SAMPLES RECEIVED: **14-8-75**  
 DATE REPORT SENT: **19-8-75**

SAMPLE NAME				GRID CO-ORDINATES										ONE MILE MAP	pH	GEOCHEMICAL RESULTS																VALUE				SPARE																																													
PROJECT	PROPERTY	YEAR	SAMPLER	NUMBER	TYPE	LATITUDE					LONGITUDE					E	W	Example: 1 1 0 1 3 4 5	COPPER (ppm) Extraction:	LEAD (ppm) Extraction:	ZINC (ppm) Extraction:																	No.	C	P	Z	SPARE																																							
						N	S	1	2	3	4	5	6	7	8							9	10	11	12	13	14	15	16	17	18	19	20	21	22	23	24						25	26	27	28	29	30	31	32	33	34	35	36	37	38	39	40	41	42	43	44	45	46	47	48	49	50	51	52	53	54	55	56	57	58	59	60	61	62	63
EN75						10000	N											18	6	110																																																													
						102												8	8	50																																																													
						104												26	20	198																																																													
						106												20	32	200																																																													
						108												14	20	100																																																													
						110												8	10	42																																																													
						112												26	30	134																																																													
						114												18	90	120																																																													
						116												16	38	118																																																													
						118												10	30	82																																																													
						120												14	18	72																																																													
						122												14	26	260																																																													
						124												6	4	10																																																													
						126												14	16	72																																																													
						128												12	40	60																																																													
						130												40	20	100																																																													
						132												16	12	50																																																													
						134												14	20	102																																																													
						136												16	50	162																																																													
						138												16	38	170																																																													
						140												22	20	90																																																													
						142												8	20	42																																																													
						15000	N											10	4	10																																																													
						16800	E																																																																										
						16000	N											40	26	480																																																													
						112												28	8	42																																																													
						114												68	28	910																																																													
EN75						11600	N											10	6	70																																																													

ROW NUMBER

1  
2  
3  
4  
5  
6  
7  
8  
9  
10  
11  
12  
13  
14  
15  
16  
17  
18  
19  
20  
21  
22  
23  
24  
25  
26  
27  
28





P-11

N 2 5 0 0  
14-8-75  
19-8-75

FILE NUMBER:  
DATE SAMPLES RECEIVED:  
DATE REPORT SENT:

CYPRUS ANVIL GEOCHEM REPORT  
ANALYSES BY:  
ANALYST:

H. P. Chou  
Name Lala

SAMPLE NAME				GRID CO-ORDINATES					ONE MILE MAP	pH	GEOCHEMICAL RESULTS																												VALUE				SPARE				ROW NUMBER
FACILITY	PROPERTY	YEAR	SAMPLER	NUMBER	TYPE	LATITUDE	N	LONGITUDE	E	pH	COPPER (ppm)	LEAD (ppm)	ZINC (ppm)																													No.	C	P	Z		
Example:																																															
											22	8	24																																		
											24	10	20																																		
											6	8	22																																		
											18	18	210																																		
											16	12	80																																		
											4	4	14																																		
											6	4	20																																		
											24	12	88																																		
											12	12	42																																		
											12	6	42																																		
											30	24	150																																		
											20	22	80																																		
											52	20	154																																		
											28	28	500																																		
											14	22	72																																		
											12	16	50																																		
											16	22	62																																		
											16	24	50																																		
											4	6	10																																		
											22	16	68																																		
											32	20	92																																		
											26	20	64																																		
											38	39.5	140																																		
											10	62	26																																		
											32	33.5	200																																		
											22	64	80																																		

EM75

12400N

19200E

126

128

130

132

134

136

138

140

142

144

14600N

19200E

8000N

23200E

82

84

86

88

90

92

94

96

9800N

23200E

7400N

24000E

76

78

8000N

24000E



ROW NUMBER	SAMPLE NAME	GRID CO-ORDINATES	ONE MILE MAP	PH	GEOCHEMICAL RESULTS			VALUE	SPARE
					ZINC (ppm)	LEAD (ppm)	COPPER (ppm)		
1	EN 75	78 00 N 14 00 E	25600E		48	160	190	360	
2						12	8	16	
3						26	20	30	
4						250	72	92	
5						12	6	12	
6						20	6	12	
7						42	6	12	
8						94	6	12	
9						12	8	12	
10						10	10	20	
11						70	26	30	
12						102	52	68	
13						32	6	12	
14						102	6	12	
15						12	6	12	
16						106	20	22	
17						100	16	22	
18						102	16	22	
19						88	12	16	
20						22	10	14	
21						58	10	14	
22						40	6	10	
23						30	6	10	
24						20	6	8	
25						16	8	6	
26						6	6	6	
27						62	24	14	
28						56	12	14	

P.14

FILE NUMBER: R-5063  
DATE SAMPLES RECEIVED: 14-8-75  
DATE REPORT SENT: 19-8-75

CYPRUS ANVIL GEOCHEM REPORT  
ANALYSES BY: Anne de la  
ANALYST: H. P. Chung

SAMPLE NAME					GRID CO-ORDINATES					ONE MILE MAP		PH	GEOCHEMICAL RESULTS																				VALUE				SPARE				ROW NUMBER																																						
PROJECT	PROPERTY	YEAR	SAMPLER	NUMBER	LATITUDE	N	LONGITUDE	E	W	Example:	02:		COPPER (ppm)	LEAD (ppm)	ZINC (ppm)																					No.	C	P	Z																																								
1	2	3	4	5	6	7	8	9	10	11	12	13	14	15	16	17	18	19	20	21	22	23	24	25	26	27	28	29	30	31	32	33	34	35	36	37	38	39	40	41	42	43	44	45	46	47	48	49	50	51	52	53	54	55	56	57	58	59	60	61	62	63	64	65	66	67	68	69	70	71	72	73	74	75	76	77	78	79	80
EN75					10000N		26400E			115113	4.5	56	300	220																													1																																				
					102							22	12	50																													2																																				
					104							8	18	30																													3																																				
					106							60	98	240																													4																																				
					108							10	6	12																													5																																				
					110							6	4	6																													6																																				
					112							4	4	6																													7																																				
					114							24	28	82																													8																																				
					116							8	4	10																													9																																				
					118							4	4	8																													10																																				
EN75					12000N		26400E					16	26	46																													11																																				
																																												12																																			
																																													13																																		
																																													14																																		
																																													15																																		
																																													16																																		
																																													17																																		
																																													18																																		
																																													19																																		
																																													20																																		
																																													21																																		
																																													22																																		
																																													23																																		
																																													24																																		
																																													25																																		
																																													26																																		
																																													27																																		
																																													28																																		