





ATLAS EXPLORATIONS LIMITED

105-A-9

GEOCHEMICAL STREAM SEDIMENT SURVEY DATA

SAMPLER *Jack ...*

PHOTO NUMBER.....

DATE *May 16*

<u>Office Use Only</u>		
Map.....		
Date Plotted.....		
Plotter.....		

Sample No.	Quartz P or A	Gossan or Min	Soil		Silt		Stream Width	Remarks	Analytical Results		
			Sand	Silt	Clay	Organic			Cu	Pb	Zn
156				✓	Clay		1				
156				✓			2				
157				✓			4 1/2				
158				✓			3 1/2				
159				✓							
160				✓			4				
161				✓							
162				✓			5				
163				✓							
164							4 1/2				
165				✓							
166			Amor				5 1/2				
167											
168				✓							
169											
170			Amor				5 1/2				





105-K-9.

CONNELLY LAKE

5000

5000

BW 68-212  
1 down part

5500

BW 68-273

BW 68-274

BW 68-275

BW 68-276

BW 68-277

BW 68-278

BW 68-279

BW 68-280

BW 68-281

BW 68-282

BW 68-283

4000

BW 68-284  
BW 68-285

4000

6000

SAMPLER:  
DATE:

Bill Waugh  
Aug. 20/68

PLOTTED  
AUG. 25/68



ATLAS EXPLORATIONS LIMITED

GEOCHEMICAL STREAM SEDIMENT SURVEY DATA

SAMPLER... *Bill Waug* .....

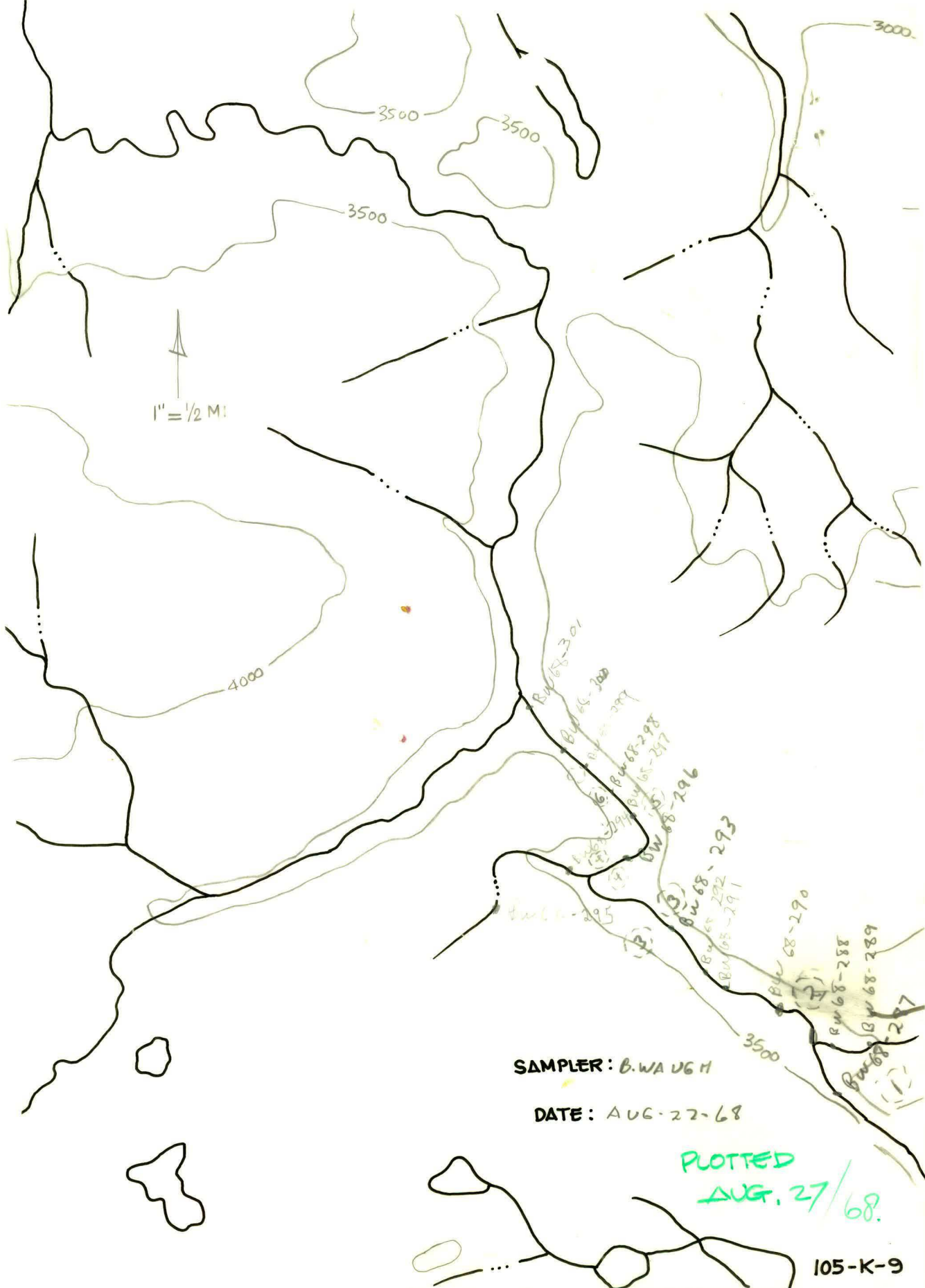
PHOTO NUMBER.....

DATE... *Aug 28 - 68* .....

Office Use Only		
Map.....		
Date Plotted.....		
Plotter.....		

Sample No.	Quartz P or A	Gossan or Min	Soil		Silt		Stream Width	Remarks	Analytical Results		
			Sand	Silt	Clay	Organic			Cu	Pb	Zn
<i>W68-327</i>	<i>P</i>		<i>fine str.</i>				<i>2'</i>	<i>Base of Granite outcrop - talus slope?</i>			
<i>28</i>	<i>P</i>		<i>"</i>				<i>4'</i>	<i>" " "</i>			
<i>29</i>	<i>P</i>		<i>"</i>				<i>4'</i>	<i>Clay wall has rusty areas looks interesting</i>			
<i>30</i>	<i>P</i>		<i>"</i>				<i>4'</i>	<i>Granite boulders in stream</i>			
<i>31</i>	<i>P</i>		<i>"</i>				<i>4</i>	<i>" "</i>			
<i>32</i>	<i>P</i>		<i>"</i>				<i>2</i>	<i>" "</i>			
<i>33</i>	<i>P</i>		<i>"</i>				<i>6</i>	<i>" "</i>			
<i>34</i>	<i>P</i>		<i>"</i>				<i>6</i>	<i>" "</i>			
<i>35</i>	<i>P</i>		<i>"</i>				<i>7</i>	<i>" "</i>			
<i>36</i>	<i>P</i>		<i>"</i>				<i>7</i>	<i>" "</i>			
<i>37</i>	<i>P</i>		<i>"</i>				<i>12</i>	<i>" "</i>			
<i>38</i>	<i>P</i>		<i>"</i>				<i>12</i>	<i>" "</i>			
<i>39</i>	<i>P</i>		<i>"</i>				<i>8</i>	<i>" "</i>			
<i>40</i>			<i>str. Coarse</i>				<i>7</i>	<i>" "</i>			
<i>41</i>	<i>P</i>		<i>fine str.</i>				<i>8</i>	<i>" "</i>			
<i>42</i>	<i>P</i>		<i>fine str.</i>				<i>3</i>	<i>" "</i>			
	<i>P</i>		<i>fine str.</i>				<i>4</i>	<i>" "</i>			





↑  
1" = 1/2 MI

SAMPLER: B. WAUGH

DATE: AUG-22-68

PLOTTED  
AUG. 27/68.

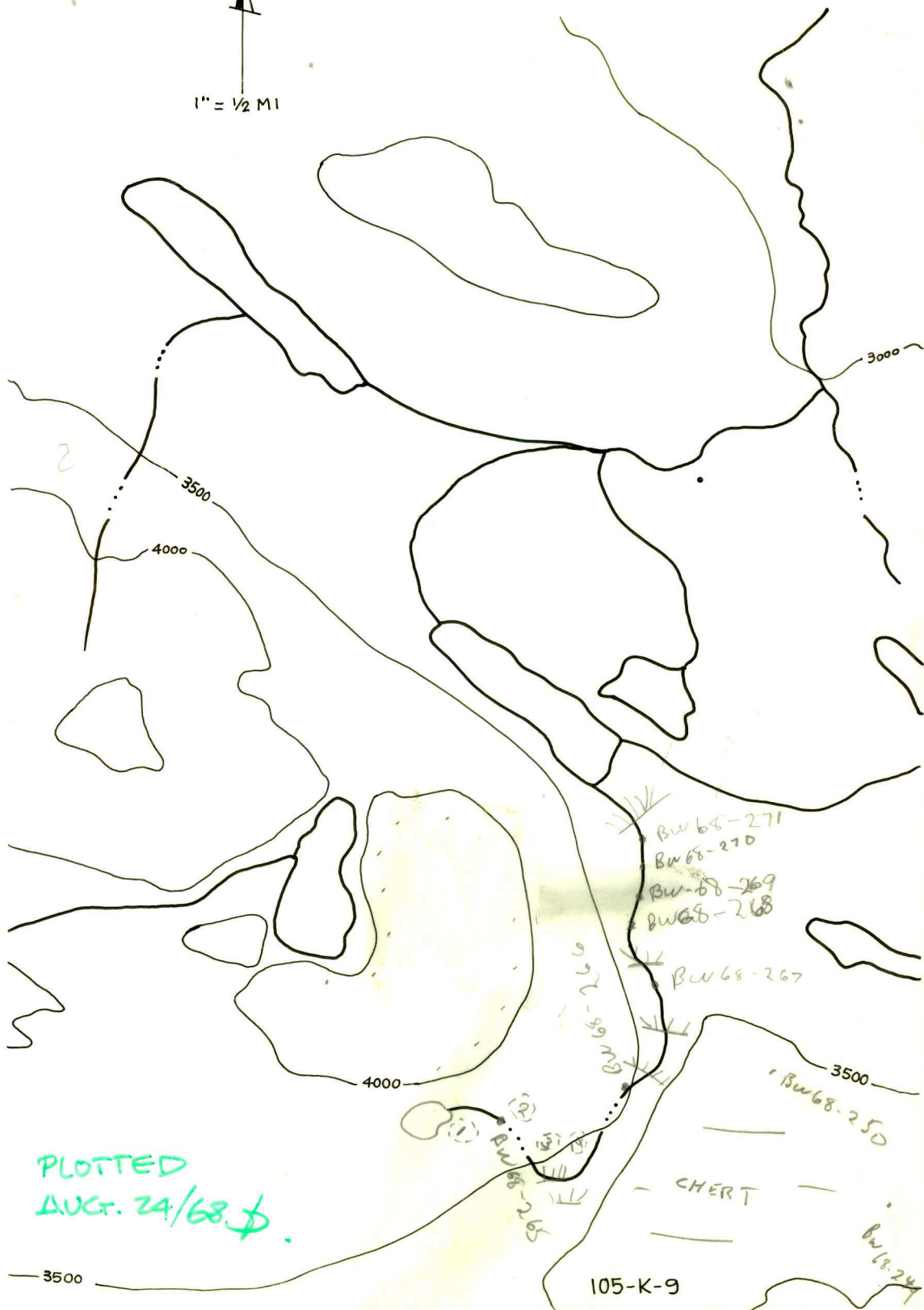
105-K-9



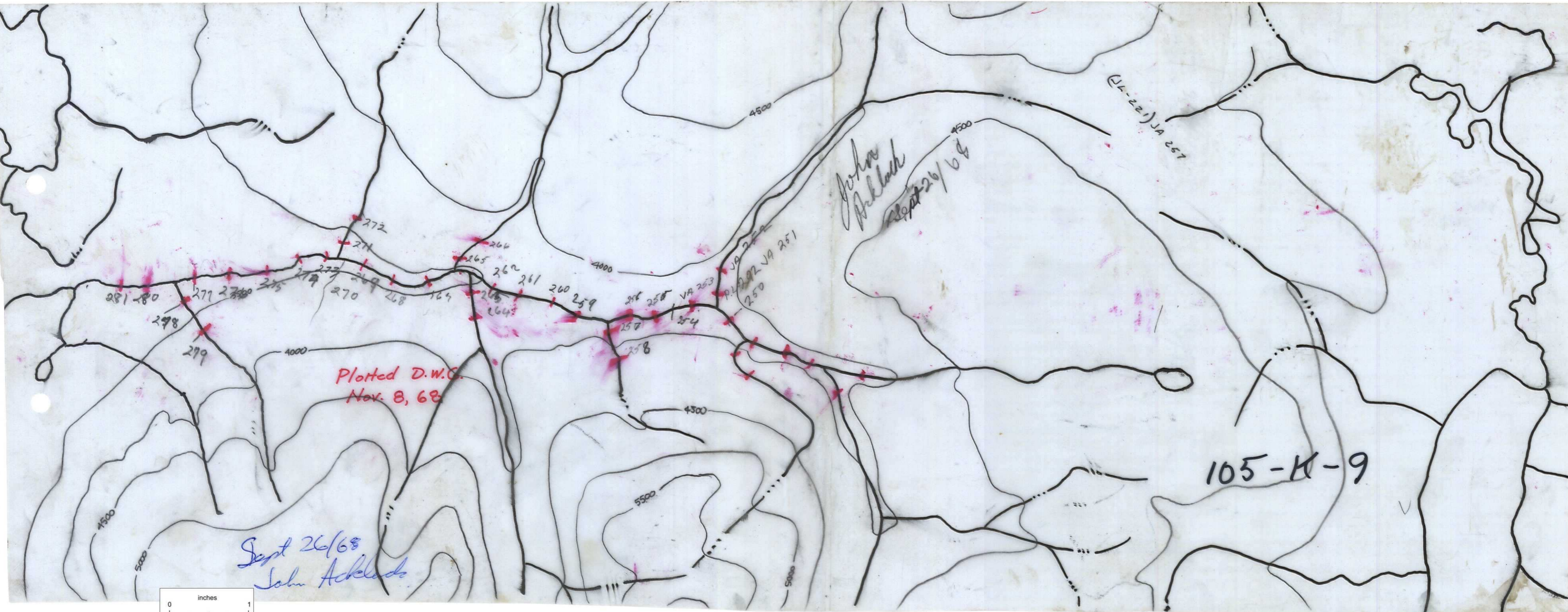


Bill Wang

Aug 14-68



PLOTTED  
AUG. 24/68. ♪



Plotted D.W.C.  
Nov. 8, 68

John  
Acklands  
Sept 26/68

105-K-9

Sept 26/68  
John Acklands

