

CUT BASELINE FIRST TO 60W & TO CAMP
 THEN DO CROSS LINES MARKED ORANGE

CUT BASELINE BACK 1300' BELOW LAST SEEP
 MEASURE BACK & SET STATIONS EVERY 400'
 CONTINUE LINE TO 76W (OR TO 60W)
 CUT CROSS LINES AT 400' SPACING
 STARTING WITH AREA SHOWN IN ORANGE

(START WITH LINE 60 AND WORK BACK TO STATION 0

LABEL EVERY STATION WITH LINE NUMBER NORS. OF
 BASELINE AND STATION NO.

SCALE
 1 IN = 1320 FT

015836

~~DATE~~ ZFW

GEOCHEM - ZEUS

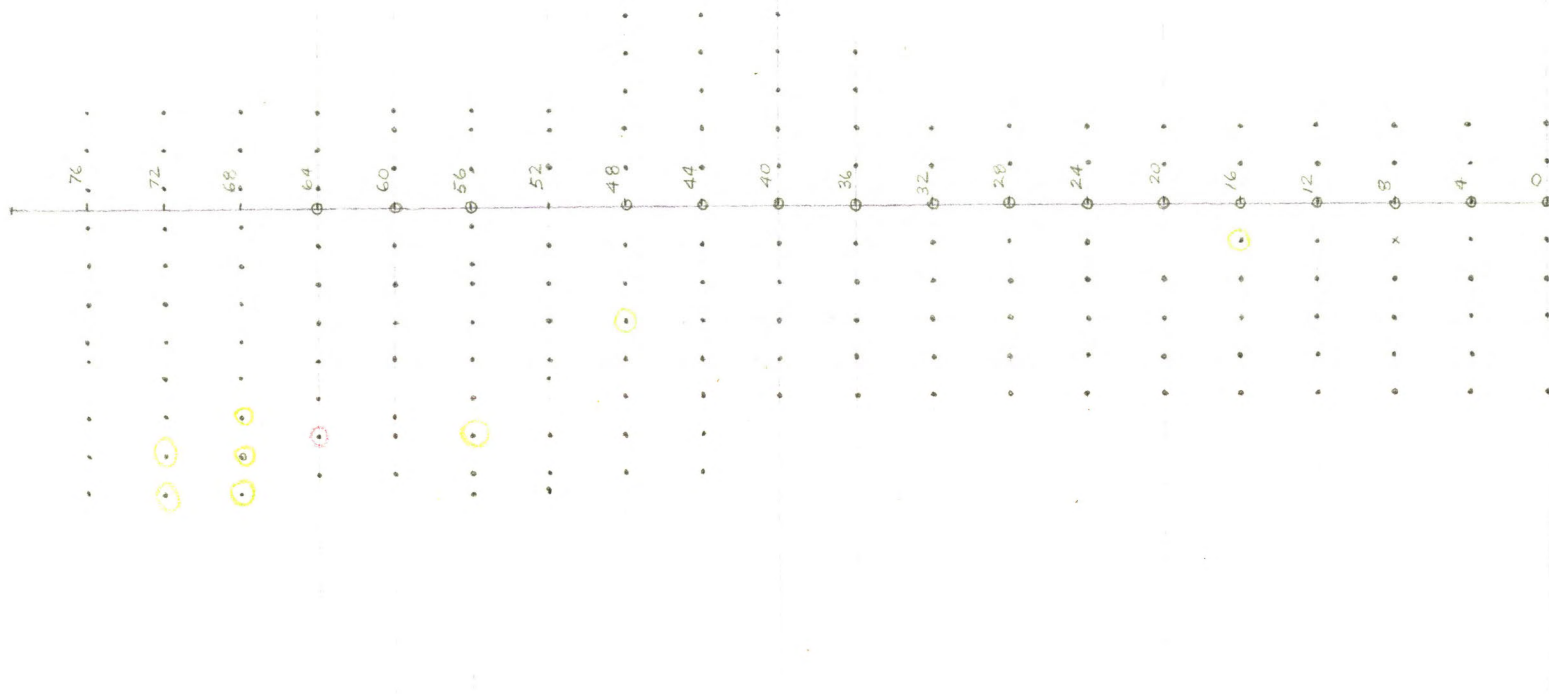
ZEUS

40 claims
1" = 1000'
MAY '66



11
11
10
10
12
11
12
12
10
9
7
7
7
6
7
7
7
6
6
16
136
1

5964

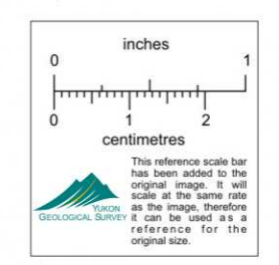
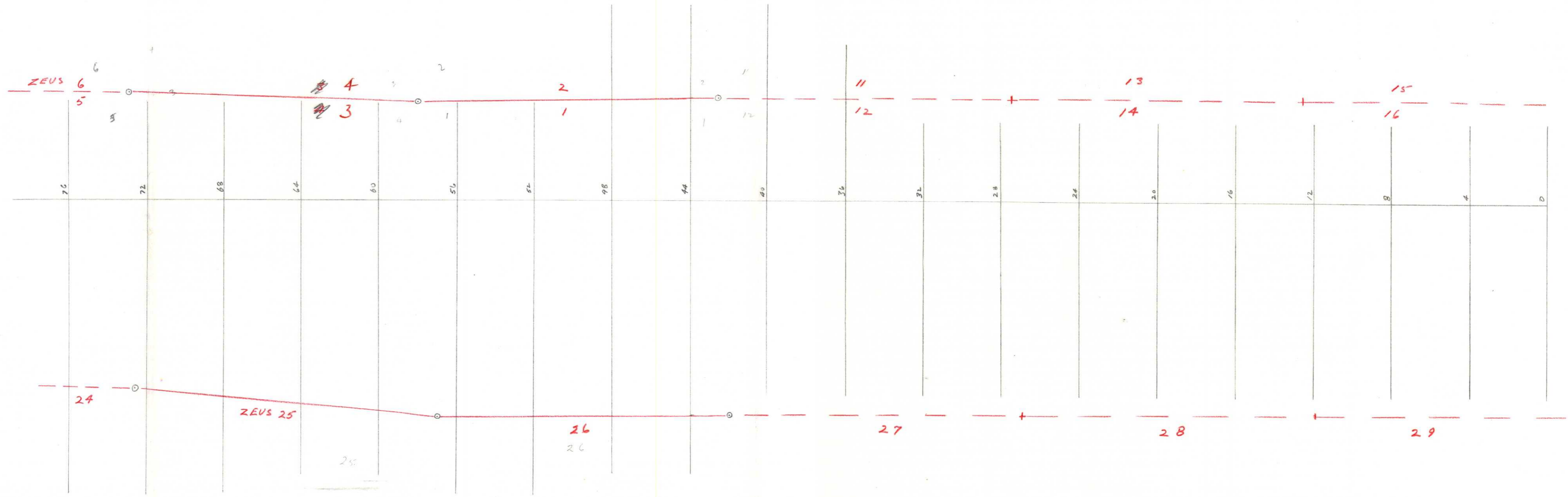


4000
1000
#3000

11 11 11 10 10 14 11 12 12 10 9 7 7 7 6 7 7 7 7 6 1" = 1000

1/4

105K - 7350



ZEUS
1" = 400'
location lines on grid.