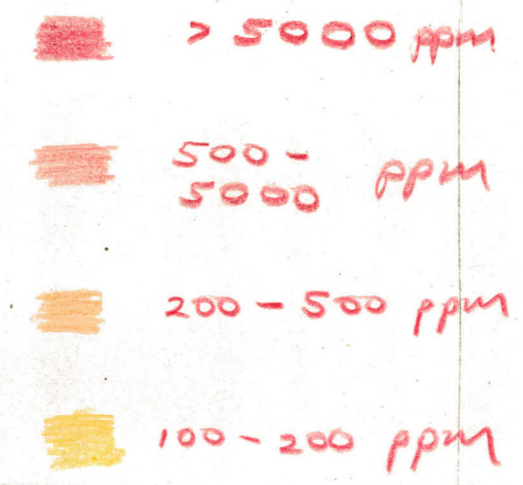
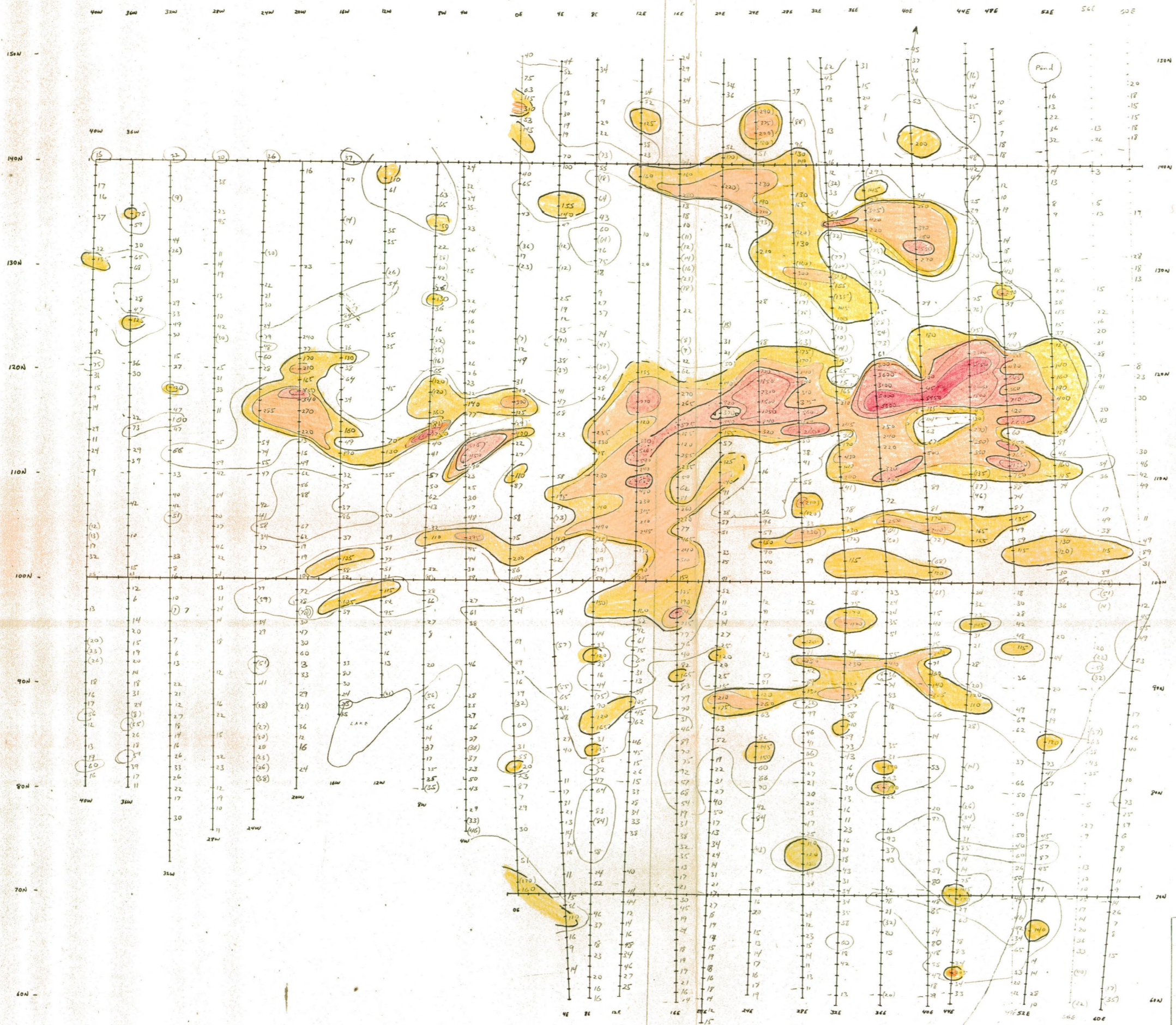


modify border as
on claims map



values plotted are HClO₄ extractable Cu on
-30 mesh fraction of 150 A horizon in
ppm as determined by atomic
absorption spectrophotometry.
Values in parentheses are highly organic
samples

CANADIAN ANVIL MINING CORPORATION

FIELD PROJECT

DANAVAL AND HALO EX CLAIMS

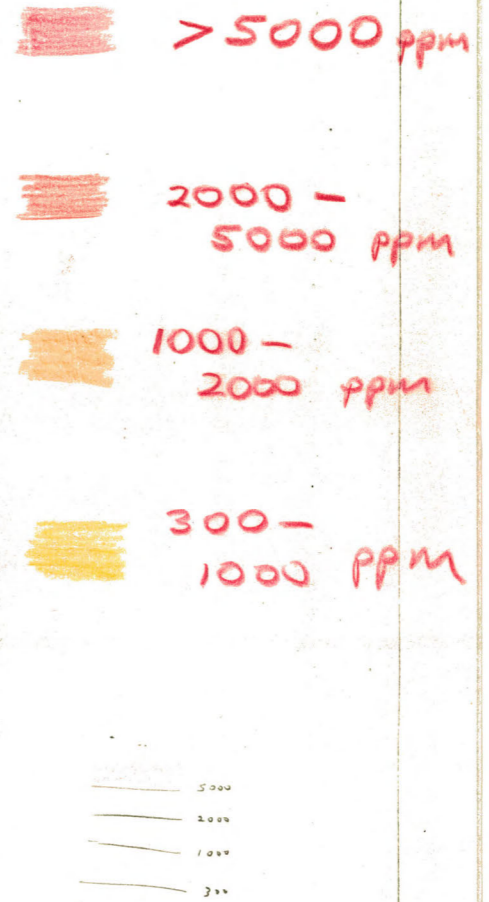
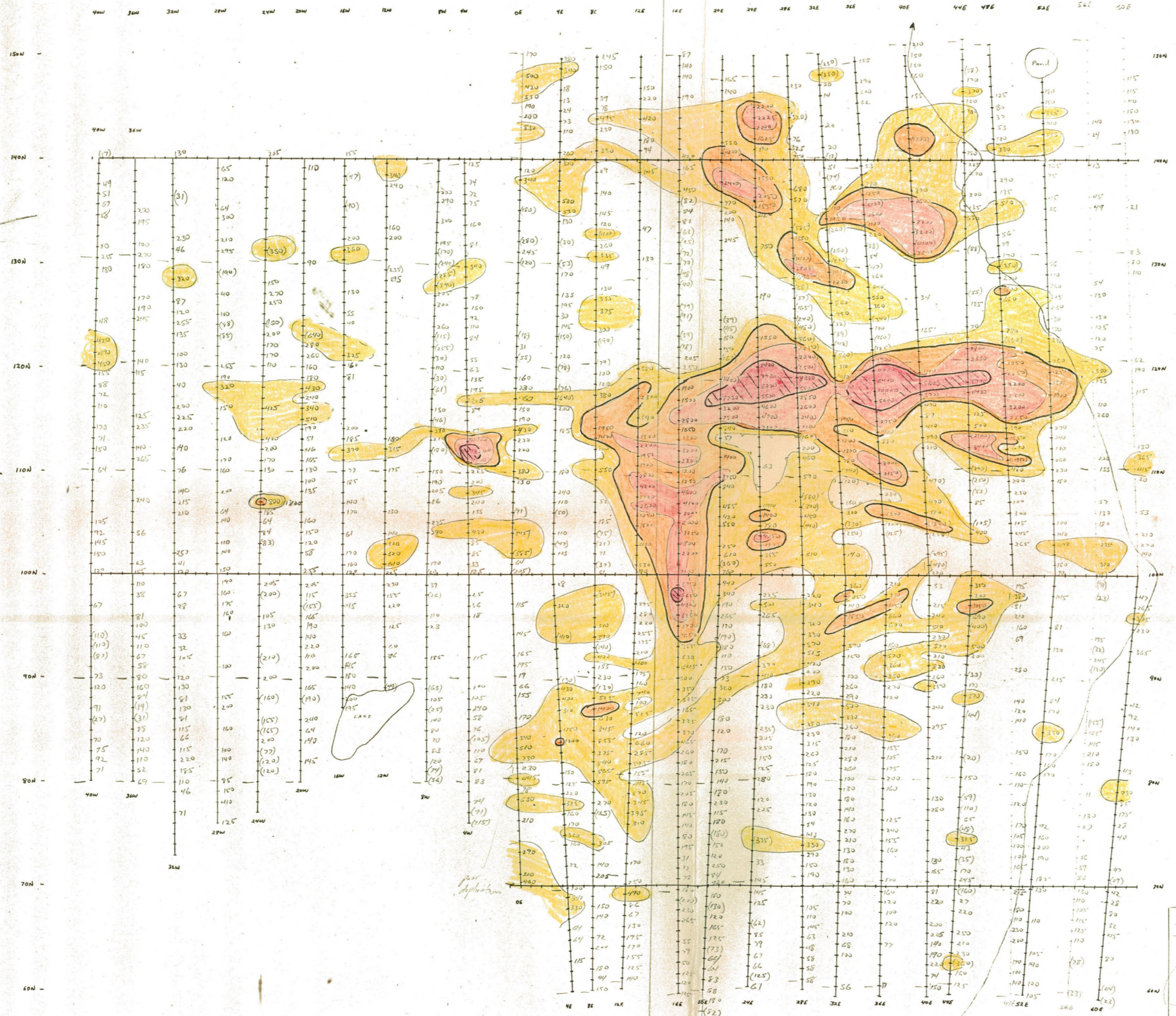
Copper

SOIL GEOCHEMISTRY

015846

(make separate)

mostly under ason
claims map

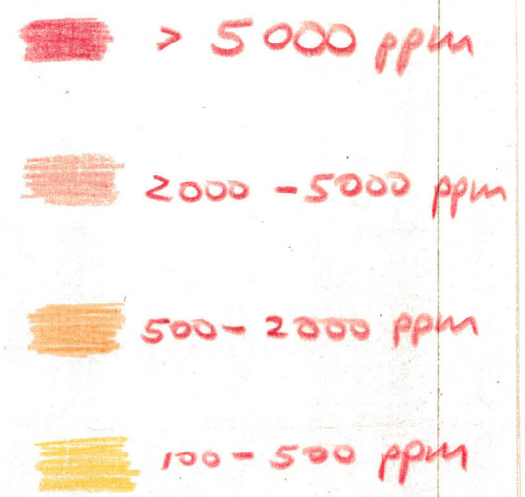
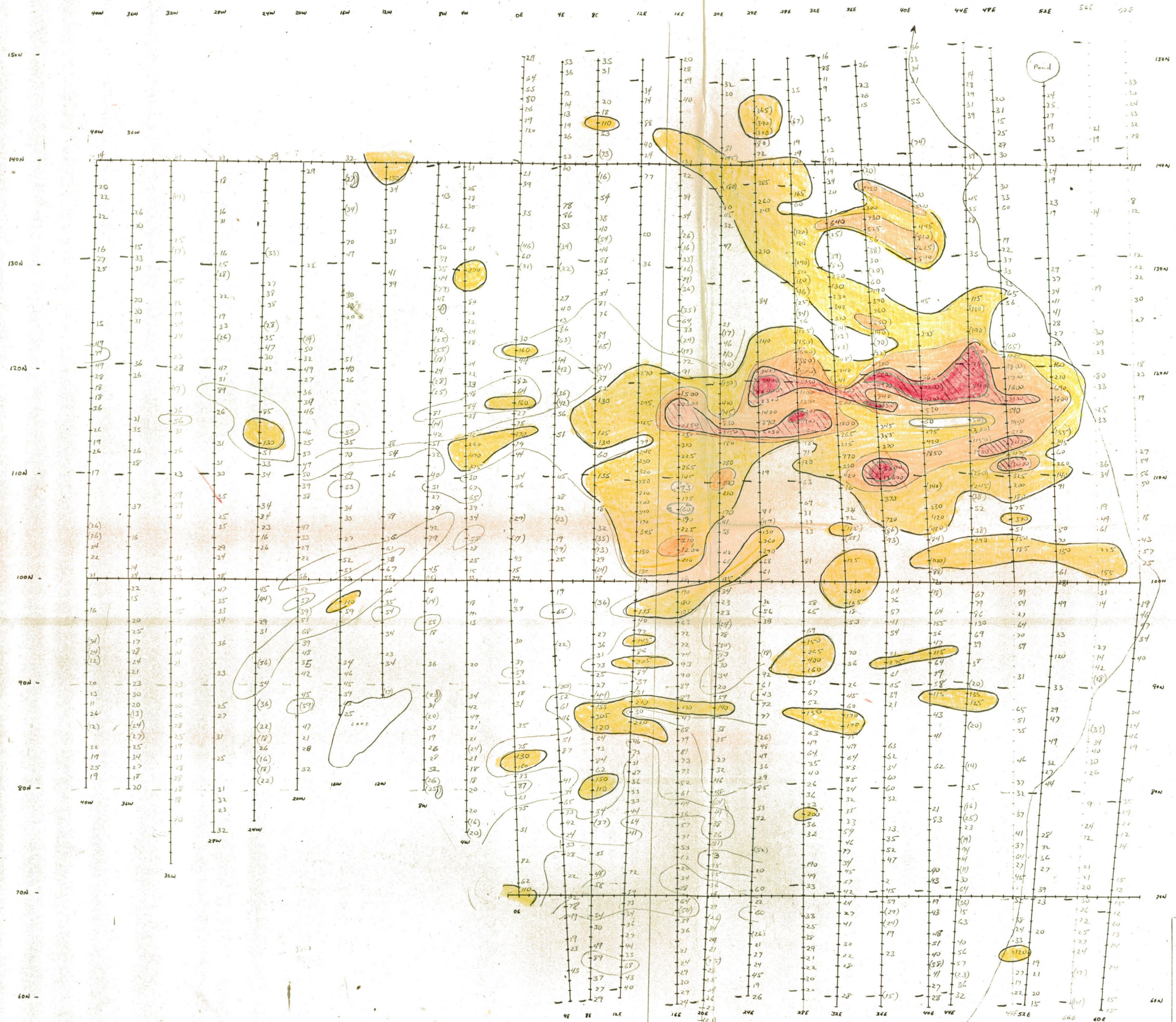


Values plotted are HClO₄ extractable Zn in
-80 mesh fraction of the A₁ & B₁ horizon
in ppm, as determined by atomic
absorption spectrophotometry.
Values in parentheses are highly
organic

LYONS ANVIL MINING CORPORATION
EARLS PROJECT
DATA, ANALYSIS AND CLAIMS
SOIL GEOCHEMISTRY
Zn

Make separate plot of
numbers w/ at green

modify border as
on claims map.



Values listed are HCL extractable Pb in
-80 mesh fraction of the B or A horizon
in ppm as determined by atomic
absorption spectrophotometry. No correction
is made for background effects of the
matrix.
Values in parentheses are highly organic
samples.

CYRUS ANVIL MINING CORPORATION

EARN PROJECT

DATA FROM THE PROJECT CONTAINS

SOIL Pb CHEMISTRY

LEAD

Scale: 1" = 500'

(Make separate
plot of numbers)