

015983

ANVIL BATHOLITH - RADIOMETRIC DATING

SAMPLE LOCATIONS

<u>Sample</u>	<u>Station</u>	<u>N.T.S.</u>	<u>LAT. (N)</u>	<u>LONG. (W)</u>
AR 1		105 L/09	62 ⁰ 33.4'	134 ⁰ 02.0'
AR 2	2515	105 K/05	62 ⁰ 28.1'	133 ⁰ 51.2'
AR 3	2569	105 K/12	62 ⁰ 31.3'	133 ⁰ 46.3'
AR 4		105 K/12	62 ⁰ 33.5'	133 ⁰ 45.8'
AR 5	~2441	105 K/12	62 ⁰ 35.3'	133 ⁰ 47.3'
AR 6		105 K/05	62 ⁰ 27.4'	133 ⁰ 38.8'
AR 7		105 K/12	62 ⁰ 35.0'	133 ⁰ 34.4'
AR 8		105 K/11	62 ⁰ 32.6'	133 ⁰ 23.8'
AR 9		105 K/06	62 ⁰ 27.1'	133 ⁰ 26.3'
AR 10		105 K/06	62 ⁰ 23.5'	133 ⁰ 18.4'
AR 11	9432	105 K/06	62 ⁰ 20.2'	133 ⁰ 15.2'
AR 12		105 K/06	62 ⁰ 16.5'	133 ⁰ 10.9'
AR 13	8588	105 K/06	62 ⁰ 22.4'	133 ⁰ 08.3'
AR 14		105 K/02	62 ⁰ 07.3'	132 ⁰ 42.2'
AR 15	3598	105 K/07	62 ⁰ 17.7'	132 ⁰ 38.6'
AR 16		105 K/01	62 ⁰ 07.1'	132 ⁰ 15.6'
AR 17		105 K/01	62 ⁰ 05.0'	132 ⁰ 15.6'
8586		105 K/06	62 ⁰ 22.0'	133 ⁰ 08.6'
9087		105 K/06	62 ⁰ 19.2'	133 ⁰ 13.0'
9088		105 K/06	62 ⁰ 18.5'	133 ⁰ 11.5'
9089		105 K/06	62 ⁰ 18.6'	133 ⁰ 09.7'
9090		105 K/06	62 ⁰ 18.5'	133 ⁰ 08.4'
9094		105 K/06	62 ⁰ 19.7'	133 ⁰ 05.9'
9438		105 K/06	62 ⁰ 18.7'	133 ⁰ 09.1'
9501		105 K/06	62 ⁰ 16.6'	133 ⁰ 07.6'
9502		105 K/06	62 ⁰ 16.4'	133 ⁰ 07.9'

ES. FOR THIN SECTIONS — ANVIL BATHOLITH

PIPE LAKE PHASE

Any of the 2 samples

TAY MOUNTAIN PHASE

either ~~3069~~ or 3366
either 3070 or ~~3071~~

ANVIL CREEK PHASE (south body)

see sheet

ANVIL CREEK PHASE (north body)

see sheet

MOUNT MYE PHASE (N.T.S. 105-K-05)

see sheet

MOUNT MYE PHASE (N.T.S. 105-K-06)

2537 No

ORCHAY PHASE

see sheet

ORCHIE LAKE PHASE

see sheet

TAY MOUNTAIN PHASE

N.T.S. 105-L-08, 09 and 105-K-05

<u>Station</u>	<u>Foliated</u>	<u>Porphyritic</u>	<u>Grain Size</u>	<u>Mafics</u>
2939	Y	N	-	bio
3062	-	N	very fine	bio
3069	Y	N	-	-
3070	N	-	pegmatite	-
3071	-	-	very fine	bio
3366	-	N	medium	bio
3368	-	N	-	bio
AR01	Y	N	medium	bio, musc

ANVIL CREEK PHASE (south body)

N.T.S. 105-K-05

<u>Station</u>	<u>Foliated</u>	<u>Porphyritic</u>	<u>Grain Size</u>	<u>Mafics</u>	
2004	-	N	-	bio, hbl	
2013	-	N	-	bio, hbl	
1 sample {	2019	-	N	coarse	bio
	2020	-	N	coarse	bio
	2020A	-	N	coarse	bio
2021	-	N	coarse	bio	
✓ 2035	-	N	-	-	
2043	-	N	medium	bio	
2044	-	N	medium	bio	
2045	N	-	medium	bio	
* ✓ 2046	N	-	medium	bio	
2047	-	Y	fine	-	
2048	-	Y	fine	-	
2049	N	N	medium	bio	
2052	N	N	medium	bio	
✓ 2053	-	Y	medium	bio	
2066	-	N	medium	bio	
✓ 2067	-		-	-	
2079 X	N	N	medium	bio	
2081	N	N	medium	bio	
1 sample {	2083 X	N	Y	fine	musc
	2087	Y	-	-	bio, hbl
	2088 X	N	Y	-	bio
2089	-	N	-	-	
2090		N	-	-	
1 sample {	2091	-	-	fine	bio
	2092	-	-	fine	bio
	2093	-	-	fine	bio
	2094	-	-	coarse	bio
	2095			quartz K-feldspar pegmatite dyke	
2122	N	N	coarse	bio	
2123	-	N	coarse	bio	
2124		N	coarse	bio	
2125	-	N	coarse	bio	
2126	-	Y	coarse	bio	
2127	-	N	coarse	bio	
2410	Y	-	pegmatite	-	

<u>Station</u>	<u>Foliated</u>	<u>Porphyritic</u>	<u>Grain Size</u>	<u>Mafics</u>
✓ 1985	-	Y	coarse	bio
1992	N	Y	fine	bio, hbl
1993 X	N	-	medium	bio, hbl
1 sample {	1997	Y	coarse	bio
	1998	Y	coarse	bio
	1999	Y	coarse	bio, hbl
2002	-	-	-	-
2445	-	N	medium	bio, hbl
2448	-	N	medium	bio, hbl
2449	-	Y	-	bio
✓ 2450	-	-	-	-
2515	-	-	-	bio, hbl
2516	-	-	-	hbl
2559	Y	N	fine	bio
2560	N	Y	-	bio
AR02	N	N	medium	bio, hbl
AR03	-	-	-	-
AR04	N	Y	coarse	bio
AR07	N	Y	coarse	bio
AR08	N	Y	coarse	bio, hbl

	<u>Station</u>	<u>Foliated</u>	<u>Porphyritic</u>	<u>Grain Size</u>	<u>Mafics</u>
1 sample	1928 X	Y	Y	fine	bio, musc
	1929	Y?	Y	coarse	bio
	1930	Y	Y	-	bio
	1931	Y	Y	-	bio
	1933	Y	-	fine	bio, musc
	1945	N	N	fine	bio
	✓1947	N	N	fine	bio
	1948	N	Y	coarse	bio
	1949	N	Y	coarse	bio
	1950	N	Y	coarse	bio
	✓1954	-	N	medium	bio
1 sample	1955	Y	Y	coarse	bio
	1956	Y	Y	coarse	bio
	1957	Y	Y	coarse	bio
	1958	Y	Y	coarse	bio
	1959 X	Y	Y	coarse	bio
	1960	N	Y	coarse	bio
	1961 X	-	Y	medium	bio, musc
	1962	N	-	-	bio
	1964	-	Y	coarse	bio
	1965	-	Y	coarse	bio
	1966	-	Y	coarse	bio
	1967	-	Y	coarse	bio
	1968	-	Y	coarse	bio
	1969	-	Y	coarse	bio, musc
1 sample	1970	-	Y	coarse	bio
	1971	-	Y	coarse	bio
	1972	-	N	coarse	bio
	1973	-	N	coarse	bio
	✓2456	-	N	medium	bio, musc
	✓2727	Y	Y	-	bio
	AR06	N	Y	medium	bio, musc

<u>Station</u>	<u>Foliated</u>	<u>Porphyritic</u>	<u>Grain Size</u>	<u>Mafics</u>
0037	-	-	-	-
0038	-	-	-	-
0039	-	-	-	hbl
0040	-	-	-	-
0041	-	-	-	-
0042	-	-	fine	bio
0043	-	Y	-	-
0044	-	-	fine	bio, hbl
0048	-	Y	-	-
0049	-	Y	-	-
0050	-	Y	-	-
0051	-	Y	-	-
0052	Y	Y	-	-
0053	Y	Y	-	-
0054	-	-	fine	bio
0065	Y	Y	-	-
0081	-	Y	-	-
0105	Y	Y	-	bio
0109	Y	Y	-	bio
0110	Y	Y	-	-
0111	Y	Y	-	-
0112	Y	Y	-	-
0113	Y	Y	-	-
0446	Y	Y	-	bio
0447	Y	Y	-	-
0448	N	Y	coarse	-
0449	N	Y	-	-
0450	Y	Y	-	-
0463	Y	Y	-	-

<u>Station</u>	<u>Foliated</u>	<u>Porphyritic</u>	<u>Grain Size</u>	<u>Mafics</u>
0566	N	N	medium	bio, hb1
0567	N	N	medium	bio, hb1
0620	Y	-	fine	bio
0621	Y	-	fine	bio
0622	Y	-	fine	bio
0623	-	-	-	-
0625	Y	-	fine	bio
0628	Y	-	fine	bio
0633	Y	-	-	bio
0636	Y	-	-	-
0708	-	-	coarse	-
0709	Y	-	medium	musc
0714	N	-	medium	bio
0719	-	-	medium	-
0720	Y	Y	medium	-
0856	Y	Y	medium	-
0857	Y	Y	-	-
0858	Y	Y	-	-
0859	Y	Y	-	-
0860	Y	N	-	-
0861	Y	-	-	-
0862	Y	-	-	bio, musc
0864	Y	-	medium	bio, musc
0865	Y	-	medium	bio, musc
0866	Y	-	medium	bio, musc
0867	Y	-	medium	bio, musc
0875A	-	-	-	-
0876	Y	-	-	musc
0878	Y	-	medium	-
0879	-	-	-	-
0880	Y	-	medium	-

<u>Station</u>	<u>Foliated</u>	<u>Porphyritic</u>	<u>Grain Size</u>	<u>Mafics</u>
0883A	-	-	-	-
0884	Y	-	-	-
0896	Y	N	coarse	musc, bio
0897	Y	-	coarse	musc, bio
0898	Y	-	-	-
0899	Y	-	-	-
0900	Y	Y	-	-
0915	Y	-	medium	bio, musc
0916	Y	Y	-	bio, musc
0917	Y	-	-	-
0918	Y	-	-	-
0919	Y	-	-	-
0935	Y	-	-	bio, musc
0974A	-	-	-	-
1003	Y	-	-	hbl, bio
1004	N	Y	-	-
1921	-	-	-	-
2537	-	Y	-	bio
2851	-	N	medium	bio
2852	-	-	-	musc, bio
2868	-	-	medium	musc
3108	Y	-	fine	bio, musc
3109	Y	-	-	-
3110	Y	-	-	-
3230	Y	Y	medium	bio, musc
L041	-	-	-	-
L042	-	-	-	-
L043	-	-	-	-
L044	-	-	-	-
L100	-	-	-	-
L103	-	-	-	-

<u>Station</u>	<u>Foliated</u>	<u>Porphyritic</u>	<u>Grain Size</u>	<u>Mafics</u>
8585	N	N	medium	bio, musc
8586	N	Y	-	bio, musc
8587	N	Y	-	bio, musc
8588/AR13	N	N	-	bio, musc
8589	N	N	-	bio, musc
8590	N	N	-	bio, musc
8594	Y	Y	-	bio, musc
8595	-	Y	-	bio
8596	Y	Y	-	bio, musc
8597	Y	Y	-	bio, musc
8598	Y	N	-	bio
8599	Y	N	-	bio, musc
9080	N	N	-	bio, musc
9081	N	Y	fine	bio, musc
9082		dyke		
9083	Y	Y	coarse	bio, musc
9084	Y	Y	coarse	bio, musc
9086	Y	N	fine	bio, musc
9087	Y	N	-	bio, musc
9088	Y	N	-	bio, musc
9089	Y	N	-	bio, musc
9090	Y	N	fine	musc, bio
9091	N	N	-	musc, bio
9092		hbl dyke		
9093	Y	N	-	bio, musc
9094	Y	-	pegmatite	musc
9095	Y	N	-	bio, musc
9096	Y	Y	-	bio, musc
9097	Y	Y	-	bio, musc

<u>Station</u>	<u>Foliated</u>	<u>Porphyritic</u>	<u>Grain Size</u>	<u>Mafics</u>
9400	N	Y	-	bio
9401	Y	N	fine	bio
9404	Y	-	-	-
9405		dyke		
9406	N	N	coarse	hbl
9408	-	-	pegmatite	-
9409	-	Y	-	bio
9410	Y	N	fine	bto, musc
9411	Y	-	fine	-
9412	Y	-	fine	bto, musc
9413	Y	N	medium	musc
9414	smoky quartz porphyry			
9415	Y	N	medium	bio
9416	Y	-	medium	bio, musc
9417	-	-	medium	bio, musc
9418	Y	N	medium	bio, musc
9419	Y	-	fine	bio, musc
9420	N	N	medium	bio, musc
9421	Y	Y	medium	bio, musc
9422	Y	Y	medium	bio, musc
9423	Y	N	coarse	bio, musc
9424	Y	N	fine	bio, musc
9425	Y	Y	medium	bio, musc
9426	Y	N	medium	bio, musc
9427	Y	Y	medium	musc, bio
9428	Y	N	medium	bio
9429	Y	N	fine	bio, musc
9430	N	Y	fine	bio, musc

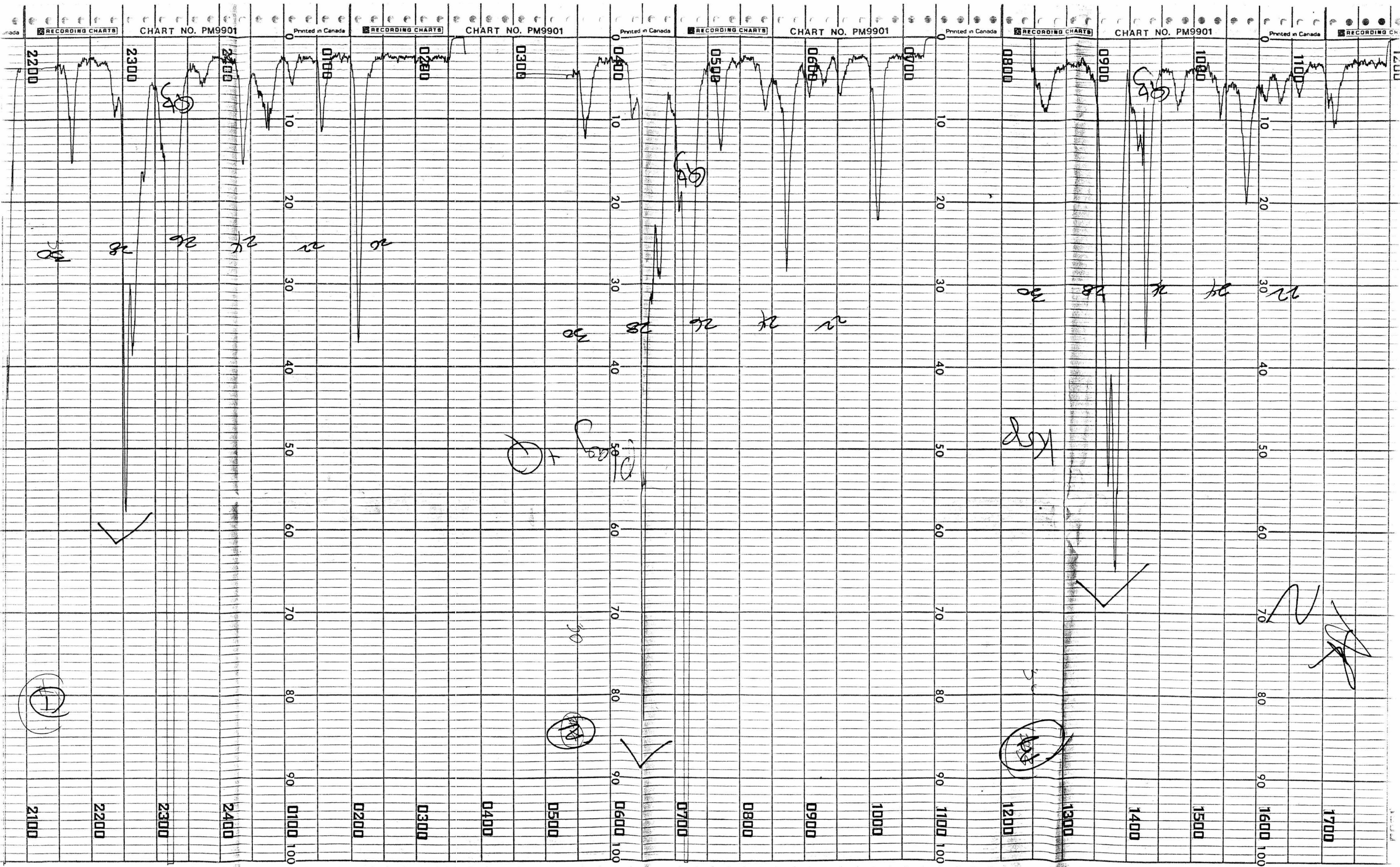


CHART NO. PM9901

CHART NO. PM9901

CHART NO. PM9901

CHART NO. PM9901

CHART NO. PM9901

Printed in Canada

Printed in Canada

Printed in Canada

Printed in Canada

2200 2300 2400

0100 0200 0300

0400 0500 0600 0700

0800 0900 1000

1100 1200 1300 1400 1500 1600 1700

0 10 20 30 40 50 60 70 80 90 100

0 10 20 30 40 50 60 70 80 90 100

0 10 20 30 40 50 60 70 80 90 100

0 10 20 30 40 50 60 70 80 90 100

38

24 26 28

22 24 26 28

30

28

26

24

22

30

28

24

22

22

20

H

S

S

K

K

Printed in Can

CHART NO. PM9901

RECORDING CHARTS

Printed in Canada

CHART NO. PM9901

78

0 10 20 30 40 50 60 70 80 90 2300 100

2300

2200

2100

2000

1900

2200

2100

2000

1900

1800

1700

1600

Handwritten scribble

Handwritten scribble

Handwritten scribble

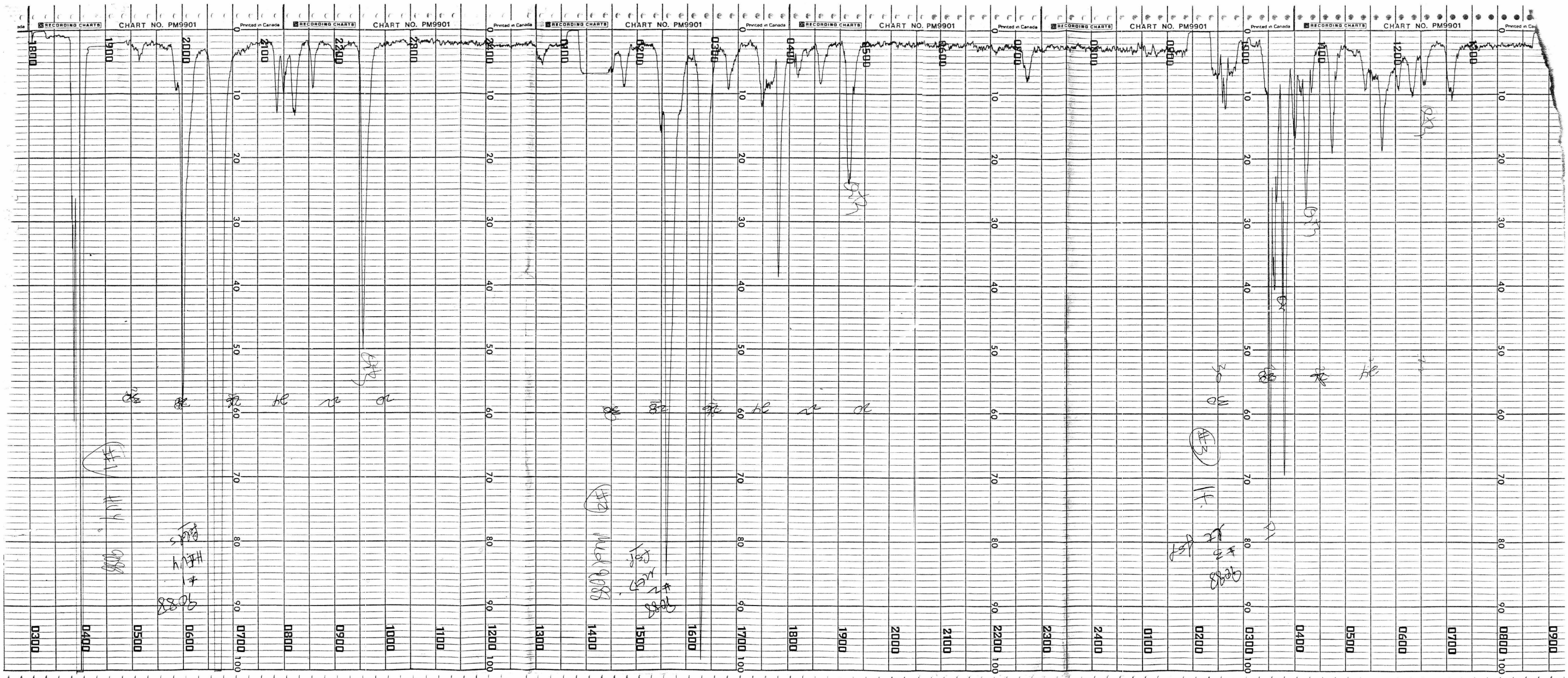
Handwritten scribble

Handwritten scribble

Handwritten scribble

Handwritten notes:
flow
USPAR
2/11/88

Handwritten notes:
GOSB USPAR flow
2/11/88



RECORDING CHARTS CHART NO. PM9901 Printed in Canada RECORDING CHARTS CHART NO. PM9901 Printed in Canada RECORDING CHARTS CHART NO. PM9901 Printed in Canada RECORDING CHARTS CHART NO. PM9901 Printed in Canada RECORDING CHARTS CHART NO. PM9901 Printed in Canada RECORDING CHARTS CHART NO. PM9901 Printed in Canada RECORDING CHARTS CHART NO. PM9901 Printed in Canada RECORDING CHARTS CHART NO. PM9901 Printed in Canada RECORDING CHARTS CHART NO. PM9901 Printed in Canada

1800 1900 2000 2100 2200 2300 2400 2500 2600 2700 2800 2900 3000 3100 3200 3300 3400 3500 3600 3700 3800 3900 4000 4100 4200 4300 4400 4500 4600 4700 4800 4900 5000 5100 5200 5300 5400 5500 5600 5700 5800 5900 6000 6100 6200 6300 6400 6500 6600 6700 6800 6900 7000 7100 7200 7300 7400 7500 7600 7700 7800 7900 8000 8100 8200 8300 8400 8500 8600 8700 8800 8900 9000 9100 9200 9300 9400 9500 9600 9700 9800 9900

Handwritten annotations on the charts include:
- Chart 1: #11, 11/4, 988
- Chart 2: #12, 11/4, 988
- Chart 3: #13, 11/4, 988
- Chart 4: #14, 11/4, 988
- Chart 5: #15, 11/4, 988
- Chart 6: #16, 11/4, 988
- Chart 7: #17, 11/4, 988
- Chart 8: #18, 11/4, 988
- Chart 9: #19, 11/4, 988
- Chart 10: #20, 11/4, 988
- Chart 11: #21, 11/4, 988
- Chart 12: #22, 11/4, 988