

CYPRUS ANVIL MINING CORPORATION

DIAMOND DRILL CORE LOG

Hole Number: SB 79-01

Fabric Orientation Diagram:

Project: S.B.

Location: Finger Lake.

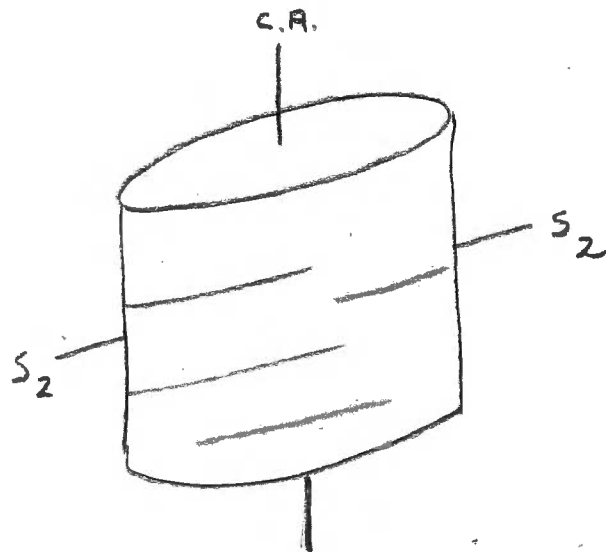
Claim: SB-12.

Terr. Plane Co-ords.: _____ N

_____ E

Grid Co-ords.: _____

Elevation: _____



All symmetry determinations looking

NW with S₂ dipping

SW with dip azimuth 185.

Total Depth: 319.4 m.

Purpose: Assessment, Fill in the Geological Structure.

Logged by: BVH Date(s) Logged: April 26 -

Drilling Contractor: ARCTIC Core: Size From To Collar Cased and Capped: _____

NQ 63.8 319.4

Started: April 6, 1979 Completed: April 29, 1979

Structural Log

Core Code	From		To		Feature	S ₁ Dip Direct.	S ₂ Dip Direct.		Description			
	10	14	16	20			22	24		26	28	32
S			11710	0	C/S12			83	11815			
S			11716	2	C/S12			82	11815			
S			11810	0	F12E							S sym 156.3-181.0 m
S			11812	3	C/S12			810	11815			
S			11815	1	F123							Z sym 181.0-185.1 m
S			11815	8	F12E							S sym 185.1-185.8 m
S			11818	2	C/S12			612	11815			
S			11914	5	C/S12			718	11815			
S			12010	5	C/S12			716	11815			
S			12010	6	F123							Z sym 185.8-200.6 m
S			12014	4	F12E							S sym 200.6-204.4 m
S			12016	6	C/S12			715	11815			
S			12018	9	F123							Z sym 204.4-208.9 m
S			12111	5	C/S12			819	11815			
S			12115	5	F12E							S sym 208.9-215.2 m
S			12118	0	C/S12			813	11815			
S			12120	5	F123							Z sym 215.2-220.5 m
S			12124	0	C/S12			715	11815			
S			12130		C/S12			719	11815			
S			12131	8	F12E			511				S sym 220.5-235.8 m
S			12131	2	C/S12			816	11815			
S			12131	0	F123							Z sym 235.8-239.0 m
S			12142	5	C/S12			814	11815			
S			12148	4	C/S12			810	11815			
S			12151	2	F12E							S sym 239.0-253.2 m
S			12151	8	C/S12			718	11815			
S			12160	9	C/S12			719	11815			
S			12161	2	C/S12			715	11815			
S			12171	7	C/S12			512	11815			
S			12171	2	F123							Z sym 253.2-275.2 m
S			12171	7	C/S12			810	11815			
S			12179	4	F12E							S sym 275.2-279.4
S			12181	1	C/S12			715	11815			
S			12181	2	F123							Z sym 279.4-286.2 m
S			12191	0	C/S12			719	11815			
S			12191	1	C/S12			811	11815			

Structural Log

Core Code	From				To				Feature	E SYE	S ₁		S ₂		Description
	10	14	16	20	22	24	26	28			32	34	Dip	Direct.	
S				1613	6			IFZ	Σ						triconed no core
S				1613	9			IFZ	Σ						S sym 63.6 - 63.9 m
S				1613	9			CIS	Σ			815	11815		
S				1614	7			IFZ	Σ				11815		Z sym 63.9 - 64.7 m.
S				1710	7			CIS	Σ			714	11815		
S				1711	6			IFZ	Σ						S sym 64.7 - 71.6 m
S				1715	4			CIS	Σ			719	11815		
S				1718	1			IFZ	Σ				11815		Z sym 71.6 - 78.1 m
S				1718	6			IFZ	Σ						S sym 78.1 - 78.6 m
S				1719	4			IFZ	Σ						Z sym 78.6 - 79.4 m
S				1811	4			CIS	Σ			811	11815		
S				1816	7			CIS	Σ			810	11815		
S				1817	5			IFZ	Σ						S sym 79.4 - 87.5 m
S				1912	8			IFZ	Σ						Z sym 87.5 - 92.8 m
S				1913	9			CIS	Σ			810	11815		
S				1919	8			CIS	Σ			711	11815		
S				11010	0			IFZ	Σ						S sym 92.8 m - 100.0 m
S				11011	3			IFZ	Σ						Z sym 100.0 - 101.3 m
S				11012	3			IFZ	Σ						S sym 101.3 - 102.3 m
S				11014	4			CIS	Σ			710	11815		
S				11114	6			CIS	Σ			719	11815		
S				11210	7			CIS	Σ			812	11815		
S				11213	0			IFZ	Σ						S sym 102.3 - 123.0 m
S				11216	8			CIS	Σ			810	11815		
S				11217	2			IFZ	Σ						Z sym 102.3 - 127.2 m.
S				11313	0			CIS	Σ			714	11815		
S				11314	0			IFZ	Σ						Z sym 123.0 - 134.0 m.
S				11317	5			IFZ	Σ						S sym 134.0 - 137.5 m
S				11318	1			IFZ	Σ						Z sym 137.5 - 138.1 m
S				11318	6			CIS	Σ			718	11815		
S				11413	0			IFZ	Σ						S sym 138.1 - 143.0 m
S				11414	6			CIS	Σ			813	11815		
S				11510	7			CIS	Σ			811	11815		
S				11516	3			IFZ	Σ						Z sym 143.0 - 156.3
S				11516	8			CIS	Σ			814	11815		
S				11614	0			CIS	Σ			811	11815		

SUMMARY LOG

DDH SB 79-01

<u>Metres</u>		
0.0 - 63.8		Overburden.
63.8 - 119.1	3G0	Interbanded non-calcareous, muscovite-chlorite ± biotite phyllite/schist, undifferentiated; and graphitic phyllite/schist.
119.1 - 119.6	4L0	Sulphide-bearing siliceous to tuffaceous exhalite.
119.6 - 124.9	4A0	Sulphide-bearing, ribbon-banded, graphitic quartzite.
124.9 - 126.5	4L7	Sulphide-bearing, pyrrhotitic, siliceous to tuffaceous exhalite.
126.5 - 319.4	3G0	Non-calcareous, muscovite-chlorite ⁺ biotite phyllite/schist, undifferentiated.

END OF HOLE

CYPRUS ANVIL MINING CORPORATION

DIAMOND DRILL CORE LOG

Hole Number: SB-79-01

Fabric Orientation Diagram:

Project: Anvil

Location: Swim Basin (H-6)

Claim: SB-11

Terr. Plane
Co-ords.: 22 634 400 N

357 700 E

Grid
Co-ords.: _____

Inclination: Vertical

All symmetry determinations looking
_____ with _____ dipping

Elevation: _____

_____ with dip azimuth _____.

Total Depth: 319.4m

Purpose: Test continuation of Sea and SP Deposits.

Logged by: B. V. Hall

Date(s) Logged: _____

Drilling Contractor: Arctic Diamond Drilling Core: Size From To Collar Cased and Capped: _____

BQ _____

Started: March 27/79 Completed: April 26/79