

# DIAMOND DRILL RECORD

LOGGED BY Stanley B. Kambatten

016219

PROPERTY VANGORDA MINES OPTION - AEX MIN. CORP.

LATITUDE 12+00 N BEARING OF HOLE \_\_\_\_\_ STARTED 1/10/74

DEPARTURE 12+00 W DIP OF HOLE VERTICAL COMPLETED 3/10/74

ELEVATION 3992 A.S.L. DIP TESTS \_\_\_\_\_ DEPTH 346

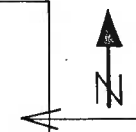
519 P.A. Topog.

D.D.H. No. A44 PAGE 1 of 2

CLAIM No. ELLEMAY 3

DIRECTION AND DISTANCE FROM

NE. CLAIM POST



FOOTAGE		DESCRIPTION	Rec/FS	SAMPLE No.	FOOTAGE		SAMPLE LENGTH	ASSAY						
FROM	TO				FROM	TO								
0	35	Overburden: Granitic boulders												
35	120	BLACK QU GRANITIC PHYLLITE. Thin white qu-fels laminae (1mm) define F <sub>1</sub> folds. Good F <sub>1</sub> foliation F <sub>1</sub> S.V. Rocks rusty to 99'. Limonite after pyrite. note f.g. sph-py in stringers in foliation at 88'. C.A. 40' = 40°; 60 = 65, 80 = 76, 100 = 76, 120 = 70;	2/11	-	35	46	-							
			5/10	-	72	82	-							
120	153.5	SULPHIDE ZONE in WHITE QU-SER PHYLLITE. Thin bands of po, with minor sph, galena conc. in foliation. Also local late veins of po, cpy. 5-8% po, Grade 1-3 PbZn. Note ser. phyllite has abundant tension gashes which are infilled with po, cpy. C.A. 140 = 75, 160 = 68, F <sub>2</sub> folds, <del>140</del>	10/10	217	120	130	10							
			10/10	218	130	140	10							
			10/10	219	140	150	10							
153.5	174	DK-GRAY BLACK, STRIPED, MIN, QU GRAPHITE PHYLLITE. py, po bands in F <sub>1</sub> . Minor cpy, sph. 3-5% sulphide. less amount of tension gashes with cpy, etc. C.A. 190 = 75°	10/10	220	150	160	10							
			7/7	221	160	167	7							
			7/7	222	167	174	7							



VAN FORD A

# DIAMOND DRILL RECORD

LOGGED BY

Stanley B. Leavelle

PROPERTY KERR ADDISON - Alex JOINT VENTURE.

D.D.H. No. A46

PAGE 1 of 2

LATITUDE 8+00S BEARING OF HOLE \_\_\_\_\_ STARTED OCT 4 174

DEPARTURE L52 W DIP OF HOLE -90° COMPLETED OCT 12 174

ELEVATION 4071' topo. 598' P.A. DIP TESTS \_\_\_\_\_ DEPTH 368.5'



CLAIM No. Bix #3

DIRECTION AND DISTANCE FROM

NE. CLAIM POST

FOOTAGE		DESCRIPTION	Rec/ft	SAMPLE No.	FOOTAGE		SAMPLE LENGTH	ASSAY						
FROM	TO				FROM	TO								
0	30	Overburden												
30	117.5	BLACK QU - GRAPHITE PHYLLITE. Very micaceous - thin qu-fels laminae. Abundant thin veins of qu and carbonate. between 35 - 60. Recovery poor to 90'. C.A: 40=60, 60=55, 80=61, 100=34, 110 = S.V. F <sub>2</sub> fold nose. Note thin zones of qu-ser-maniposite at 82'	10/19	—	31	50	19							
			10/18	—	50	68	18							
			2/7	—	68	75	7							
			3/8	—	75	83	8							
			1.5/7	—	83	90	7							
117.5	201.2	SULPHIDE ZONE in STRIPED QU-GRAPHITE PHYLLITE, and CREAM-WHITE QU SER PHYLLITES. Mainly mineralized phyllites with 15-20% Sulph. conc in F <sub>1</sub> layers (qu-graph phyllite), and zones of massive banded pyritic sulphide. Note cream qu-fels? bx sulph at 122'. Sulphide content varies 15 - 65% (in massive sections). Mainly pyrite, 1-2% magnetite, lesser sph, galena, aspy.	9.5/10.5	850	117.5	128	10.5							
			3/3	851	128	131	3.0							
			3/3	852	131	134	3.0							
			1.5/2.5	853	134	136.5	2.5							
			7/7	854	136.5	143.5	7.0							
			9.5/9.5	855	143.5	153	9.5							
			10/10	856	153	163	10.0							
			10/10	857	163	173	10.0							
		117.5-128 - Ser phyllite + sulphide	7.8/2.8	858	173	180.8	7.8							
		134 - 159 - Min qu-graph phyllite.			180.8	185.5	—							
		159 - 174 - Min qu-ser phyllite	7.5/8	859	185.5	193.5	8.0							
		174 - 181 - Min qu-graph " + massive sulph.	7.5/7.7	860	193.5	201.2	7.7							
		181 - 201 - Mainly min qu-ser phyllite.												

Barely qu-ser phyllite.



VANGORDA

# DIAMOND DRILL RECORD

LOGGED BY Stanley B. Baumhoffer

PROPERTY VANGORDA MINES OPTION - AEX MINERALS CORPORATION.

LATITUDE 174 +00 N BEARING OF HOLE \_\_\_\_\_ STARTED 4/10/74

DEPARTURE LINE 12+00 W DIP OF HOLE VERTICAL COMPLETED 5/10/74

ELEVATION 40(13) A.S.L. DIP TESTS \_\_\_\_\_ DEPTH 260'  
5140' P.A. Topog.

D.D.H. No. A47 PAGE 1 of 2

CLAIM No. EUEMAY 3



DIRECTION AND DISTANCE FROM  
NE. CLAIM POST

FOOTAGE		DESCRIPTION	Rec/PT	SAMPLE No.	FOOTAGE		SAMPLE LENGTH	ASSAY						
FROM	TO				FROM	TO								
0	25.5	Overshield - Granitic boulders, etc.												
25.5	63.5	Rusty weathered, grey green, min, QU-CH-SER PHYLLITE 7/7		226	50.5	57.5	7.0							
		Rock rusty to 50'. Bands, stringers of po, py, with lesser g/o		227	57.5	63.5	6.0							
		Sphalerite, galena: 2-3% sulphide. locally < 1 Pb Zn												
		Good F <sub>2</sub> Ch-qu veins. C.A. 30=57, 40=57, 60=64.												
63.5	81.5	SULPHIDE ZONE IN QU SER, and DLK GREY PHYLLITE.	4/4.5	228	63.5	68	4.5							
		Massive banded pyritic sulphide. 45-60% sulph, with	7/7	229	68	75	7.0							
		30% pyrite: purplish-red sphalerite, galena; epy in tension	6.5/6.5	230	75	81.5	6.5							
		gashes; <sup>BARITE IN MASSIVE SULPH.</sup> Grade 8-11% Pb Zn. 2-3 po, 1-2 magnetite.	3.5/3.5	231	81.5	85	3.5							
		C.A. <del>70=62</del> 70=62, 80=41, F <sub>2</sub> fld nose.												
81.5	95	GREY STRIPED, QU-SER-CH-GRAPHITE PHYLLITE.												
		Gradational zone between sulphide zone and lower												
		mineralized phyllite.												
95	125	DLK GREY STRIPED, MIN, QU-GRAPHITE PHYLLITE. Thin (2-3 mm)		-	96.5	111	-							
		qu-fels laminae alt. with dark graphite laminae, layers	5/5.	232	111	116	5.0							
		of bleby pyrite, with lesser oph, galena conc. in		233	116	125	9.0							
		F <sub>1</sub> layers. Note F <sub>2</sub> fld nose 102-107, S.V. F <sub>1</sub> layers.												
		C.A. 100=72, 105=S.V, 120=61,												

Wk min phyllite: blebs, layers pyrite.












# DIAMOND DRILL RECORD

LOGGED BY SRL

PROPERTY KANEORDA MINES - AEX OPTION  
 LATITUDE 2 S BEARING OF HOLE \_\_\_\_\_ STARTED OCT 10/74  
 DEPARTURE L 48 W DIP OF HOLE Vertical COMPLETED OCT 14/74  
613.7 P.A.  
 ELEVATION 4086.7 taps DIP TESTS \_\_\_\_\_ DEPTH 720'

D.D.H. No. A49 PAGE 2 of 3  
 CLAIM No. CHAMP #5  
  
 DIRECTION AND DISTANCE FROM  
 NE. CLAIM POST

FOOTAGE		DESCRIPTION	log/ft	SAMPLE No.	FOOTAGE		SAMPLE LENGTH	ASSAY						
FROM	TO				FROM	TO								
<del>289</del>		Note unit quite ch-rich, micaceous from 259' onward Mineralized between 292-94': 3% po, with f.g. sph, galena, epy. Abundant leaf py, po in foliation. Good small-scale F <sub>2</sub> (264') folds - C.A. 280=66, 300=65, 320=67.												
314.5	412	GREY (GREEN) QU-CH-SER PHYLLITE. Very micaceous; Excellent F <sub>2</sub> foliation. Leaf py. in foliation. Qu-ch veins at 364' Very clean rock, quite dk green where ch-rich. Minor py, po in foliation. C.A. 320=56; 340=69, 360=79, 380=70; 400=65. 410=76 Moderately graphitic from 400'.	98%											
412	440	BLACK STRIPED QU-CRAPHITE PHYLLITE Good laminae of qu-fels alt. with black graphitic laminae. Qu-fels locally boudinaged - lentic. Pyrite in foliation. Blabs of po. C.A. 420=76, 440=72°												
440	662	GREY (GREENISH) QU-CH-SER PHYLLITE. Very micaceous. Ch rich zones and ch-qu veins. Excellent F <sub>2</sub> . Biotite at 479' (Qu vein (577) with pyrite. C.A. 460=70; 470=75; 480=71; 500=79, 520=80, 540=75 560=65, 580=70, 600=72; 620=71, 640=79, 660=75°	6/9.5	-	514.5	524	9.5	-						

