

East Wall Crack on 1276 Bench

016919



Looking West



East Side

West Side



East Side



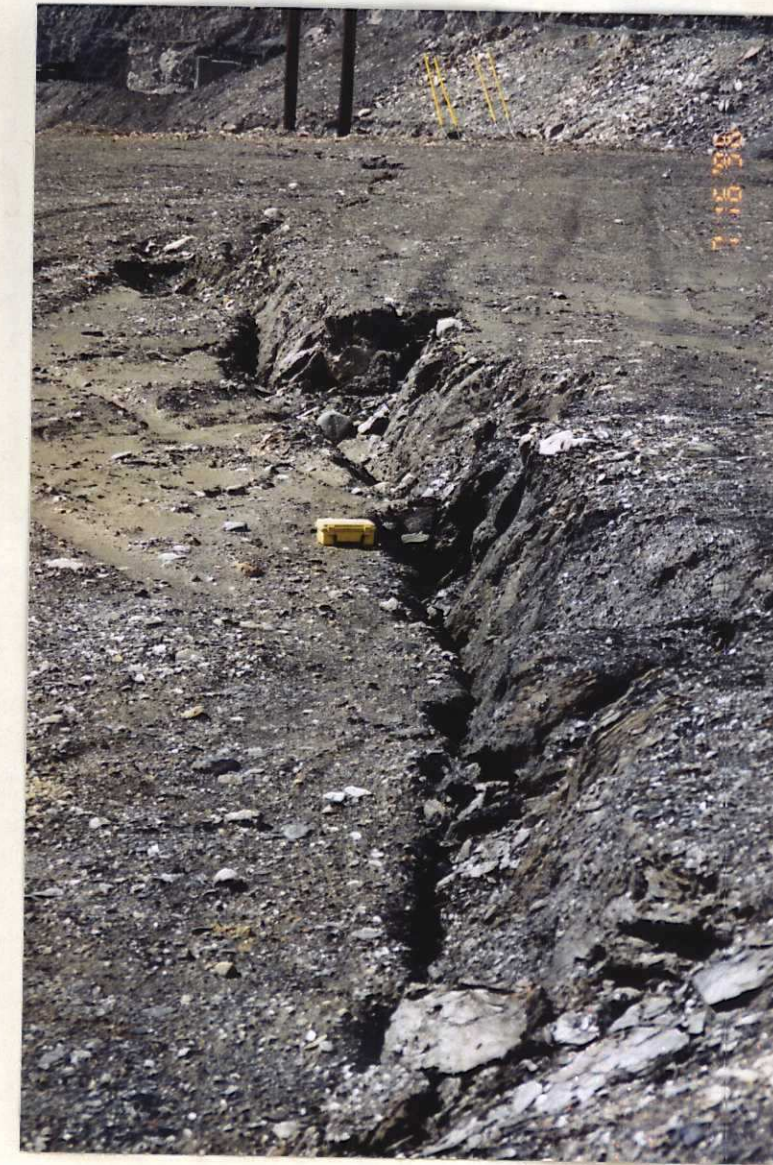
East Side



East Side



Center



Center



Center



Looking West



West Side



Looking East

View of East Wall from the Lookout



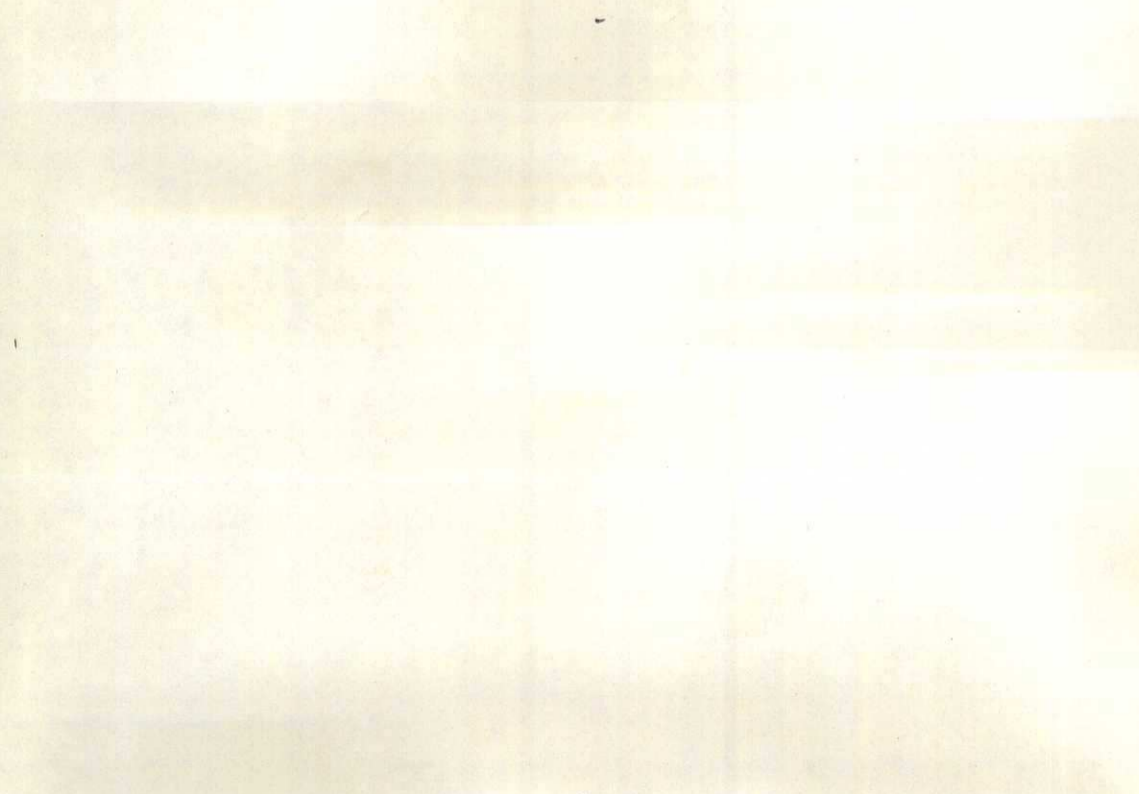
April 16, 1996



April 19, 1996



April 22, 1996



April 29, 1996



May 6, 1996



May 13, 1996



May 21, 1996



May 27, 1996



June 4, 1996



June 10, 1996



June 17, 1996



June 24, 1996



July 2, 1996



July 8, 1996



July 15, 1996

Closeup of East Wall on April 16, 1996



View of East Wall from the Lookout



August 6, 1996: Pit Bottom = 1192 m



August 12, 1996: Pit Bottom = 1192 m



August 20, 1996: Pit Bottom = 1192 m



August 26, 1996: Pit Bottom = 1192 m



September 5, 1996: Pit Bottom = 1192 m



September 9, 1996: Pit Bottom = 1192 m



September 16, 1996: Pit Bottom = 1192 m



September 23, 1996: Pit Bottom = 1192 m



September 30, 1996: Pit Bottom = 1186 m



October 7, 1996: Pit Bottom = 1186 m



October 15, 1996: Pit Bottom = 1186 m



October 21, 1996: Pit Bottom = 1186 m



October 28, 1996: Pit Bottom = 1186 m



November 5, 1996: Pit Bottom = 1180 m



November 12, 1996: Pit Bottom = 1180 m



November 18, 1996: Pit Bottom = 1180 m

Closeup of East Wall



October 15, 1996: Loader on 1192 Bench



October 21, 1996: Pickup on 1186 Bench



October 28, 1996: Drills on 1186 Bench



November 5, 1996: Power cable on 1186 Bench



November 12, 1996: Drill on 1186 Bench



November 18, 1996: Shovel on 1180 Bench

Closeup of East Wall



August 20, 1996: Drill 8 on 1198 Bench



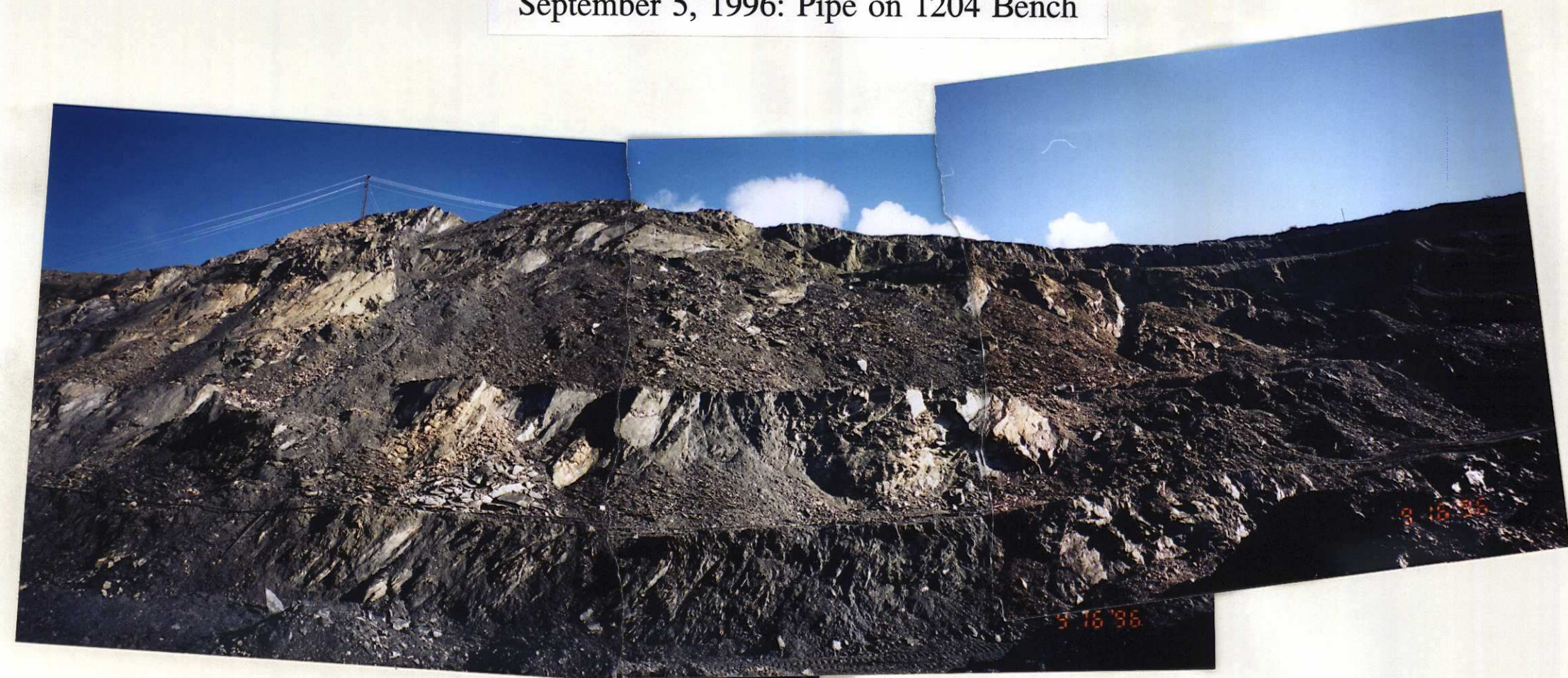
August 26, 1996: Pit Bottom = 1192 m



September 5, 1996: Pipe on 1204 Bench



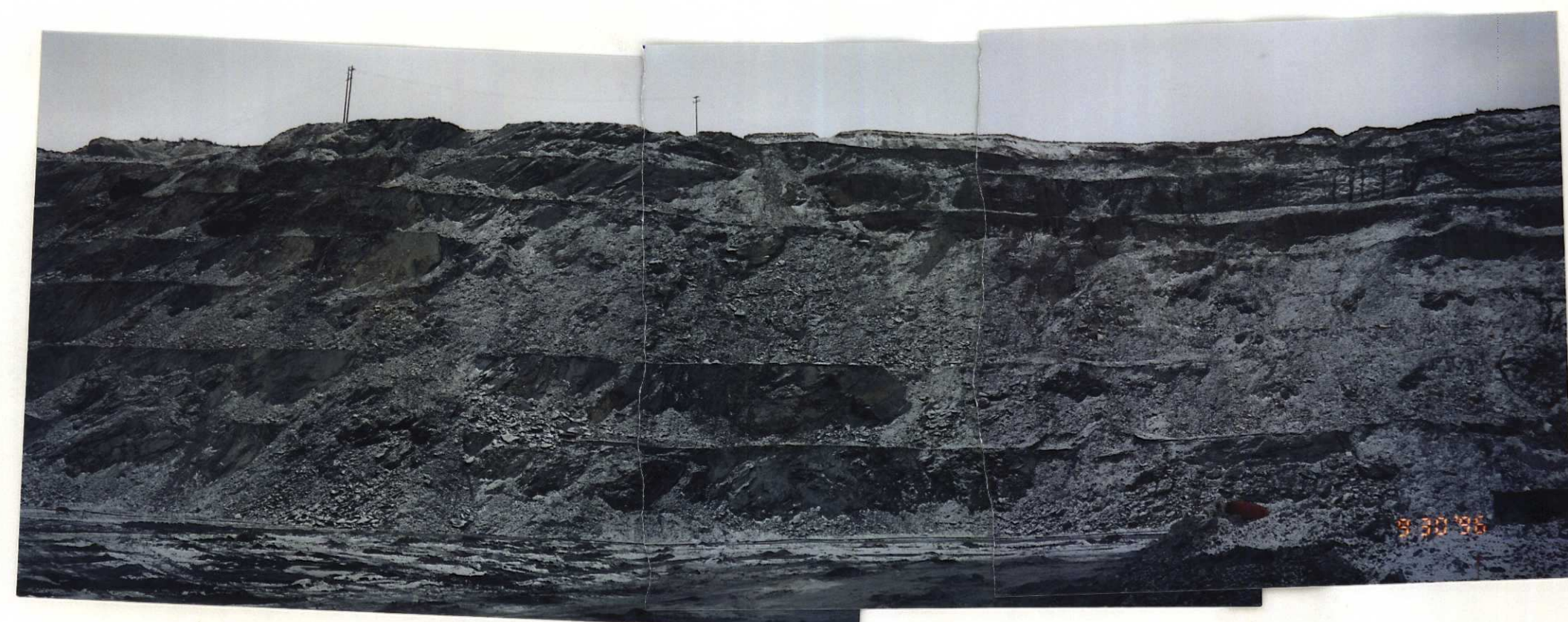
September 9, 1996: Pipe on 1204 Bench



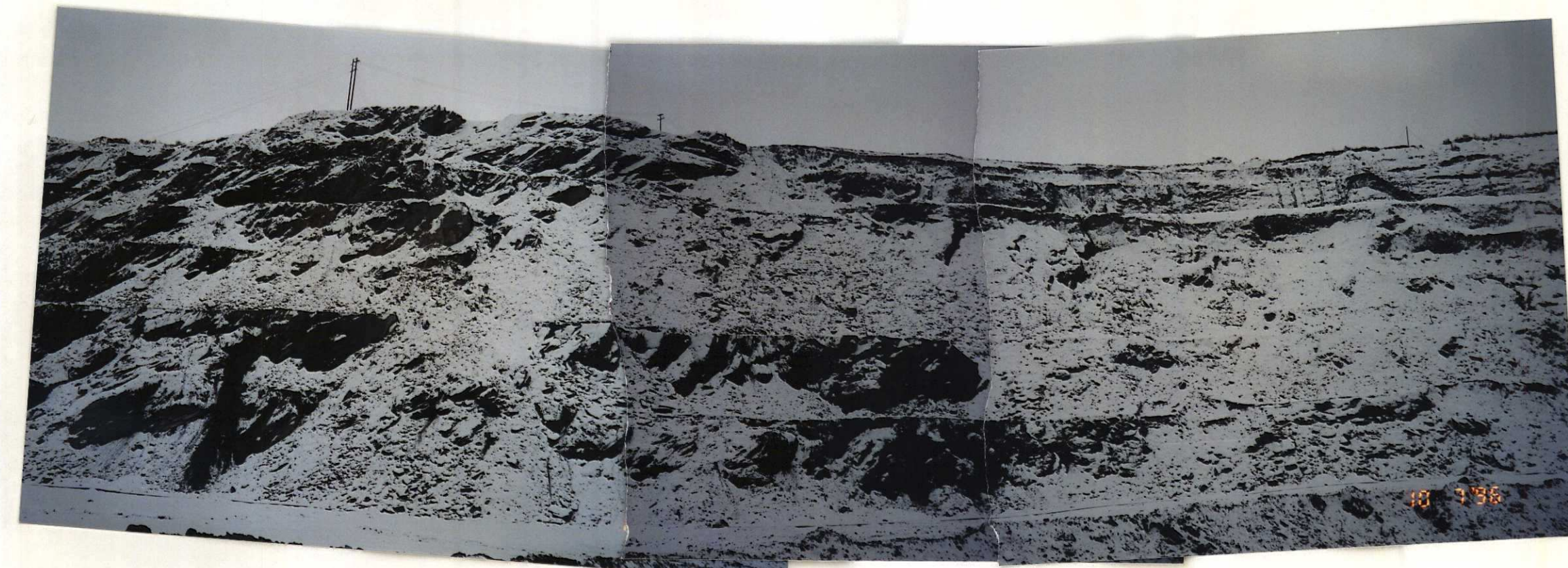
September 16, 1996: Pipe on 1204 Bench



September 23, 1996: Drill on 1192 Bench



September 30, 1996: Explosives Truck on 1192 Bench



October 7, 1996: Water Pipe on 1192 Bench

Closeup of East Wall



June 10, 1996: Pickup on 1204 Bench



June 17, 1996: Drill on 1204 Bench



June 24, 1996: Shovel on 1198 Bench



July 2, 1996: Red stakes on 1204 Bench



July 8, 1996: Backhoe on 1198 Bench



July 15, 1996: Red stakes on 1204 Bench



August 6, 1996: Pickup on 1198 Bench



August 12, 1996: Pickup on 1198 Bench

Closeup of East Wall



April 16, 1996: Pickup on 1216 Bench



April 22, 1996: Pickup on 1216 Bench



May 6, 1996: Dozer on 1216 Bench

April 29, 1996



May 13, 1996: Pickup on 1210 Bench



May 21, 1996: Pickup on 1210 Bench



May 27, 1996: Dig Limit Stakes on 1216 Bench



June 4, 1996: Pickup on 1204 Bench