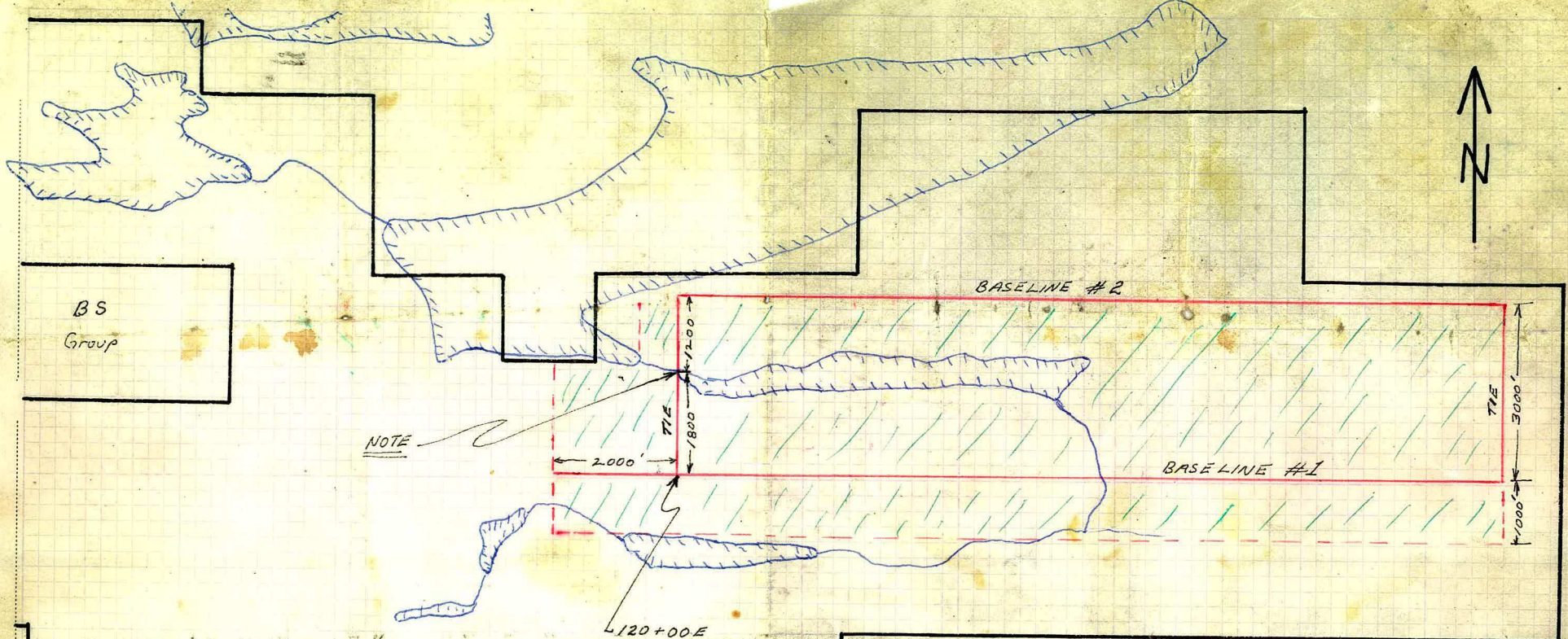


BY SHEET NO. OF  
CHKD. BY JOB NO.

DATE 2/9/66 SUBJECT MOR & SEA GRIDS

DATE

105 K 2



BS Group

SEA Grp

MOR Grp

SEA Grp

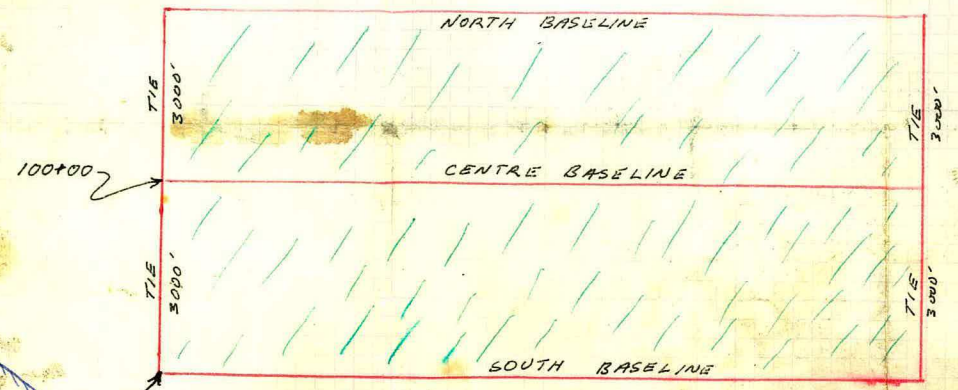
Total length BL #1 = 16000'  
" " BL #2 = 14000'

Use end of small lake to locate grid.  
Area with green hatch to have pricket lines at 400'

MOR Grp

Grid length 10400 ft  
Green hatched area to have pricket lines on 400 foot spacing.

MOR staking lines correspond roughly to proposed base lines.



# 1 posts MOR 76879  
# 2 posts MOR 74977

017049