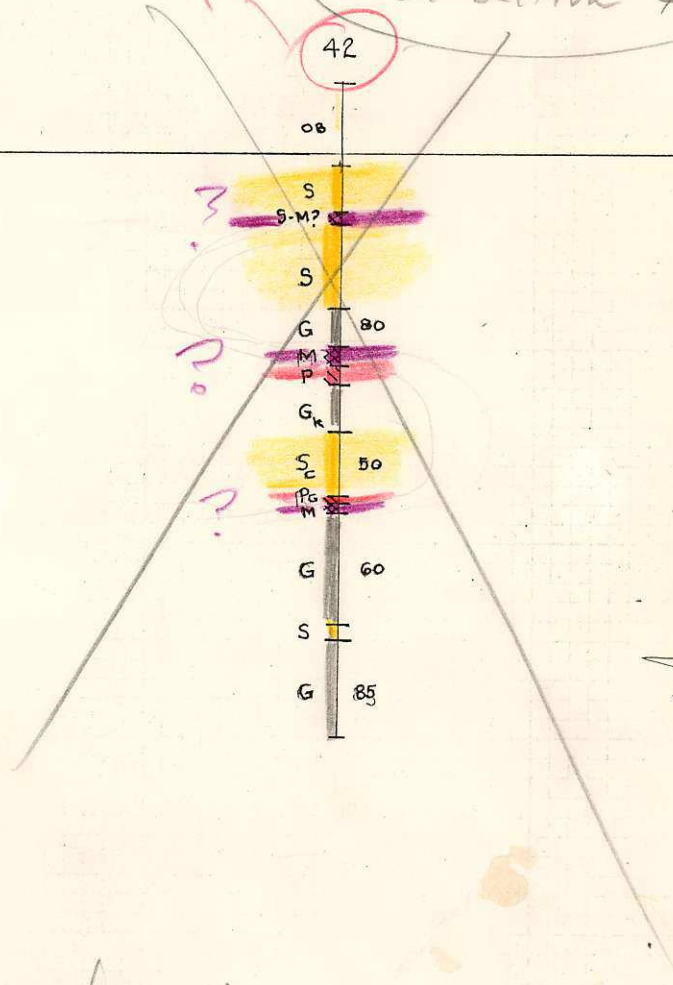


017105

137

hole 137
on section 42E



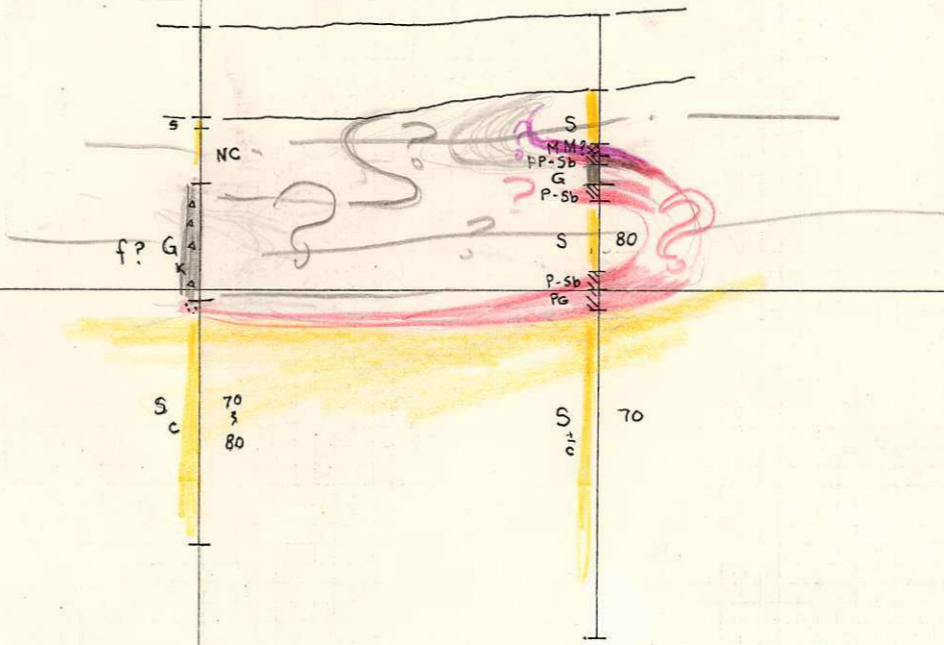
M

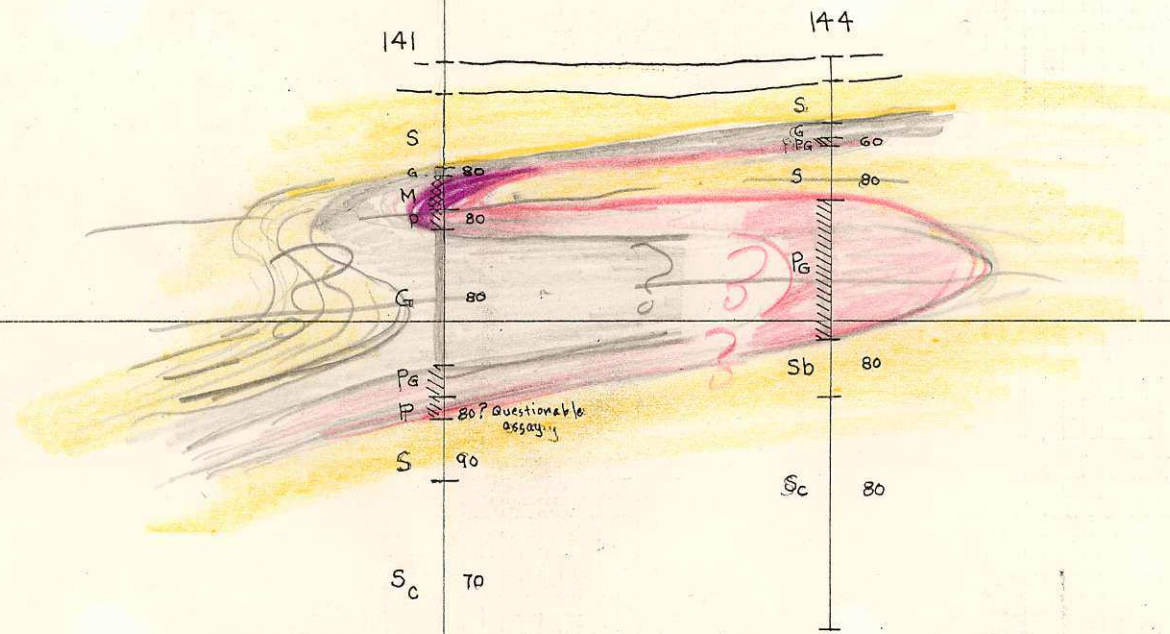
Prepared by:
Alexander J. Po
April, 1978

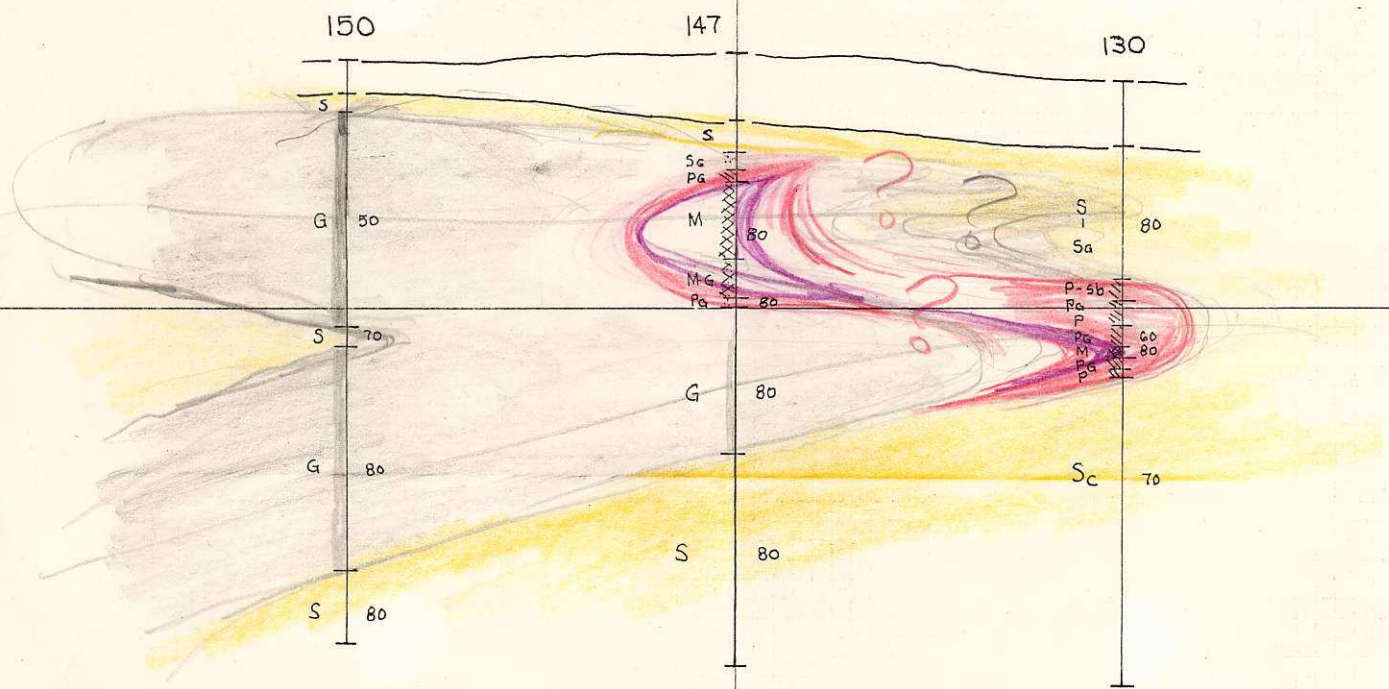
42E

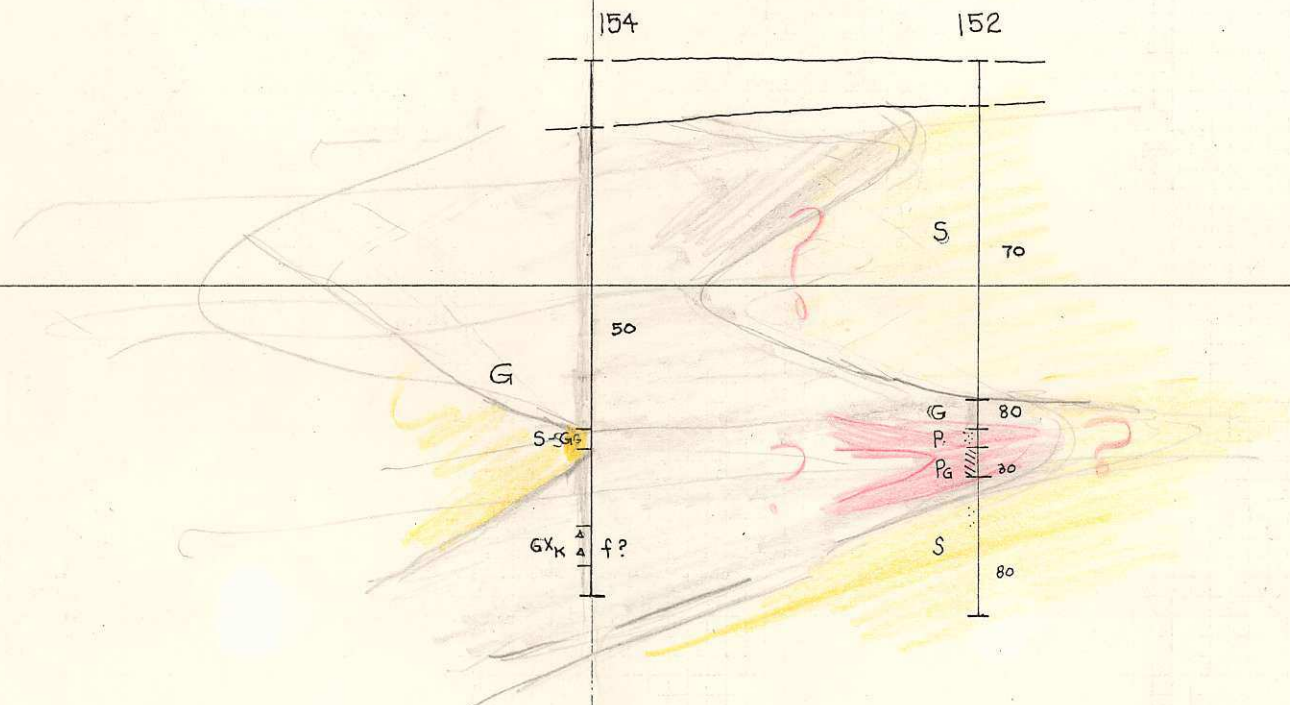
156

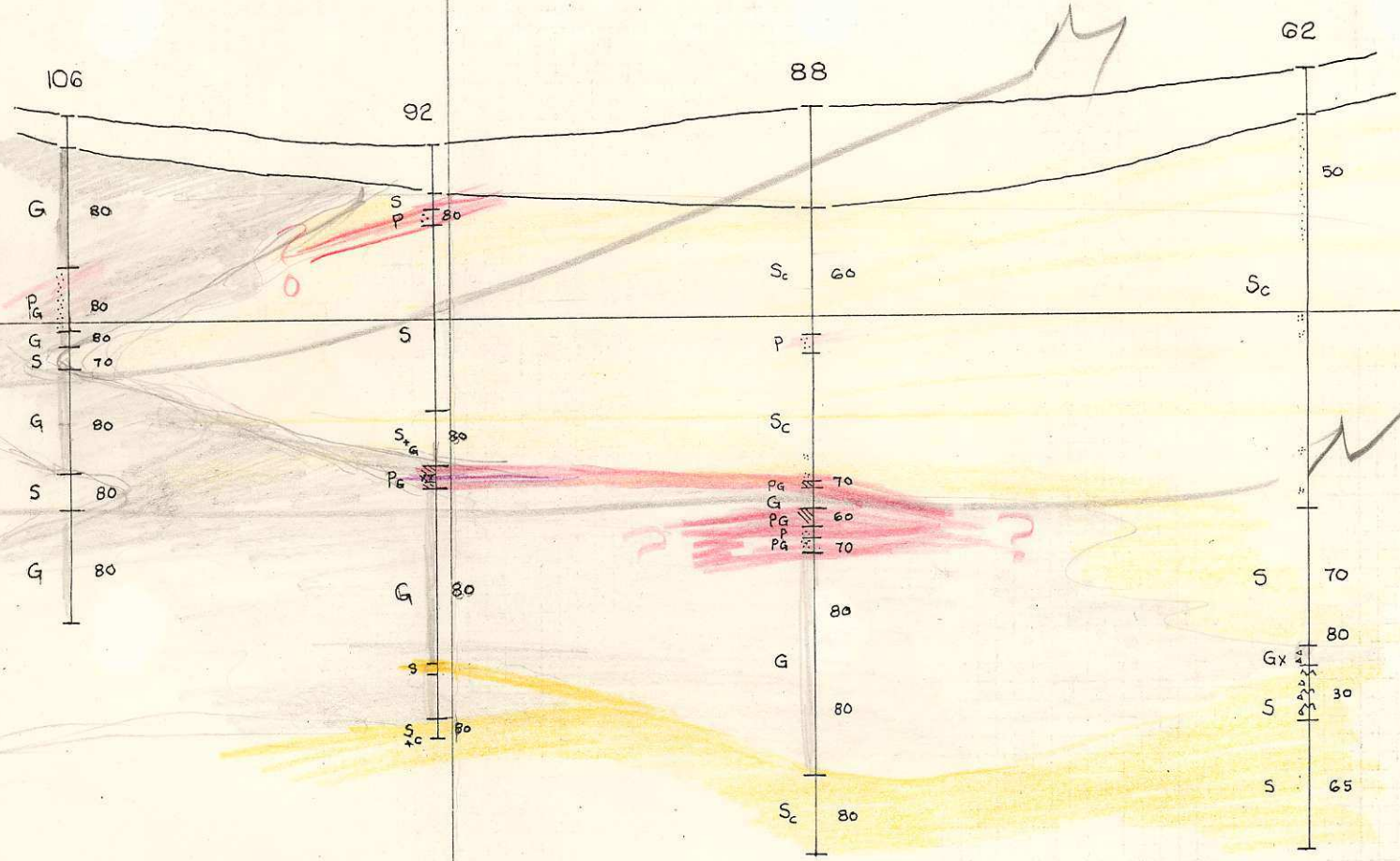
132

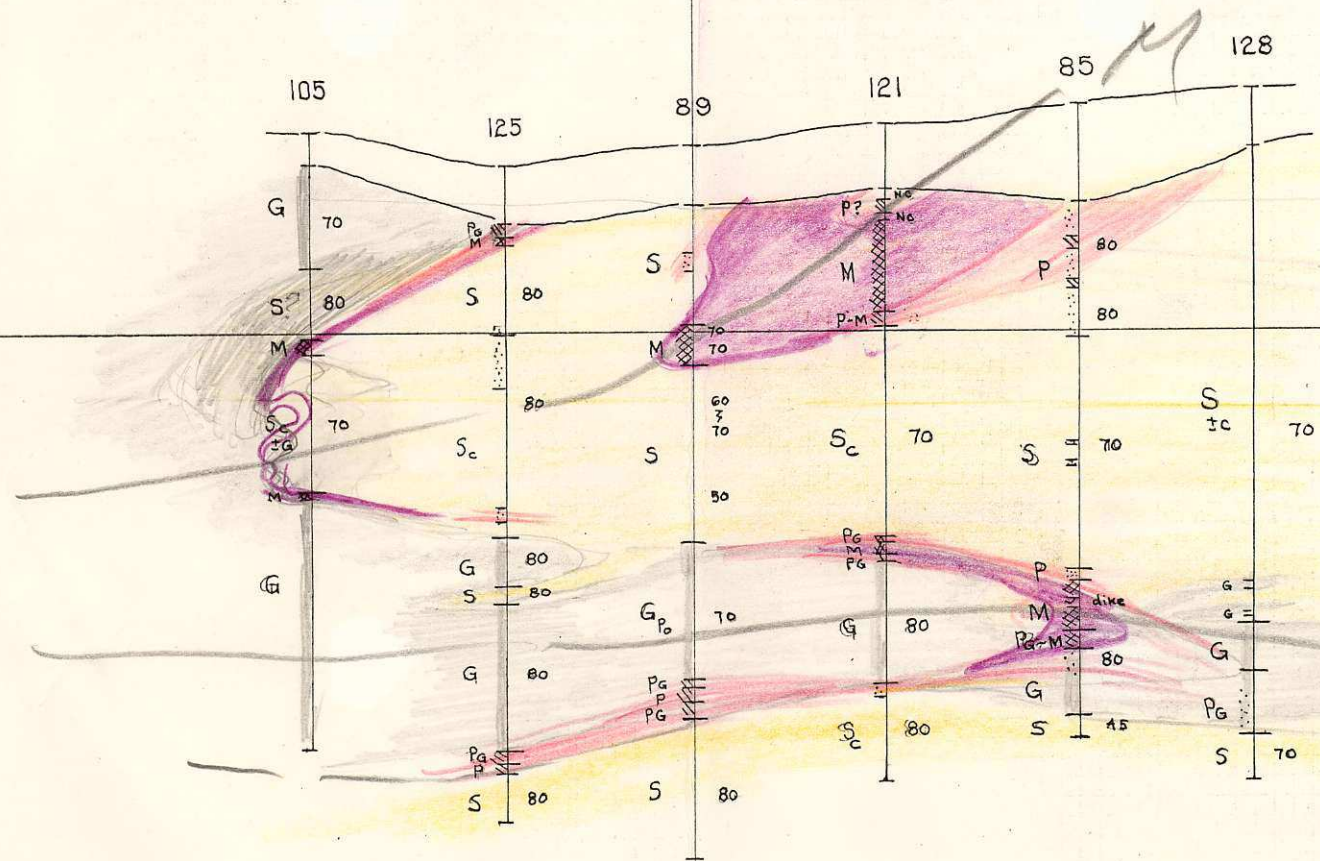


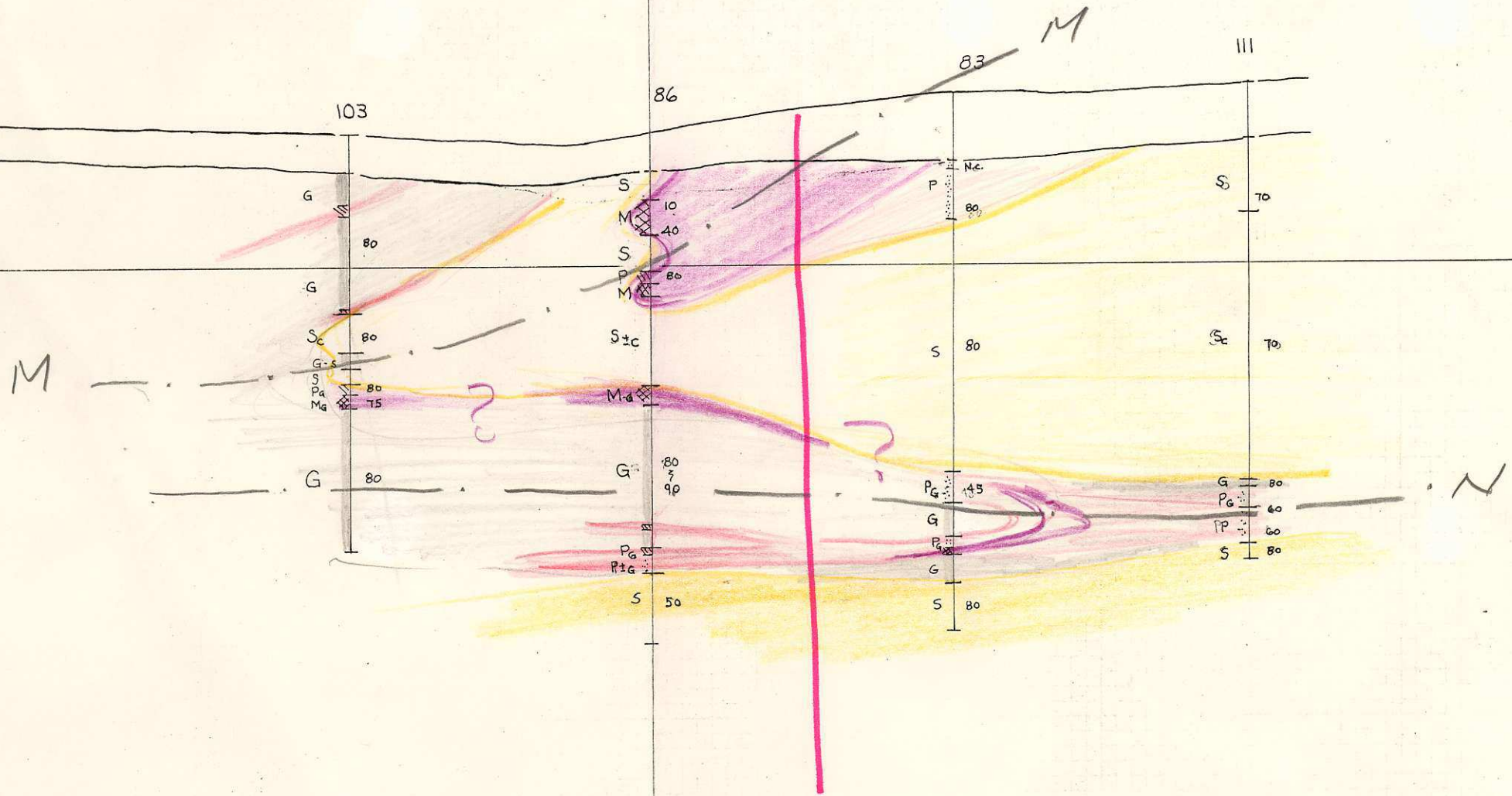


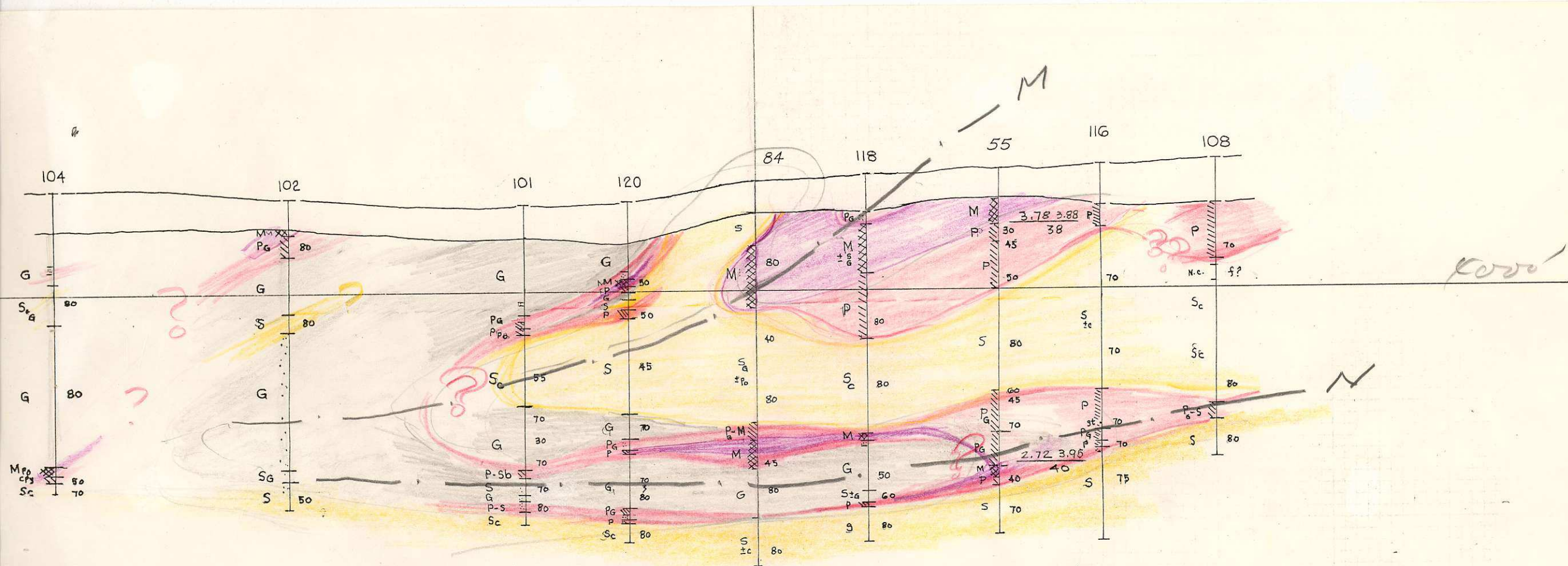






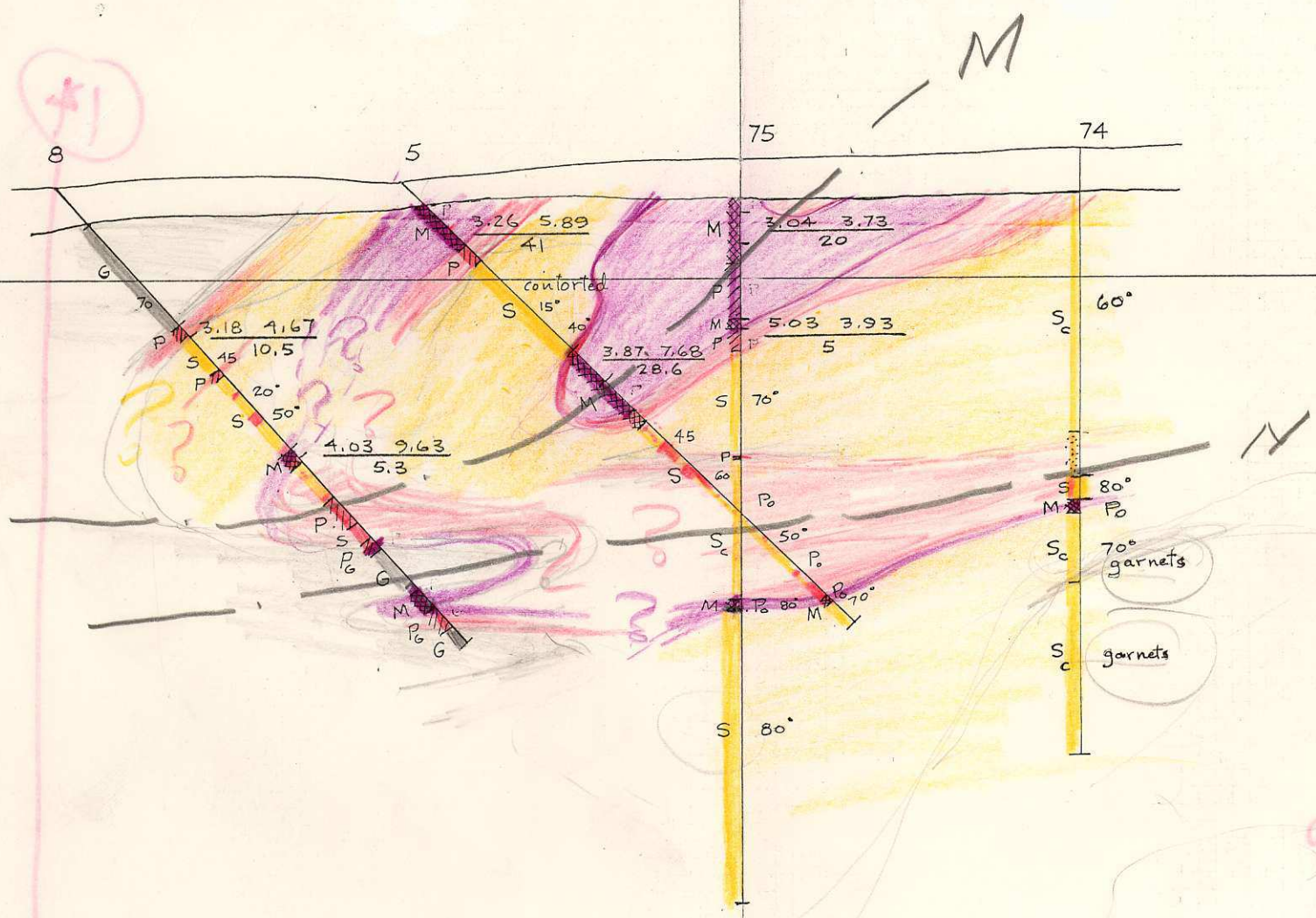






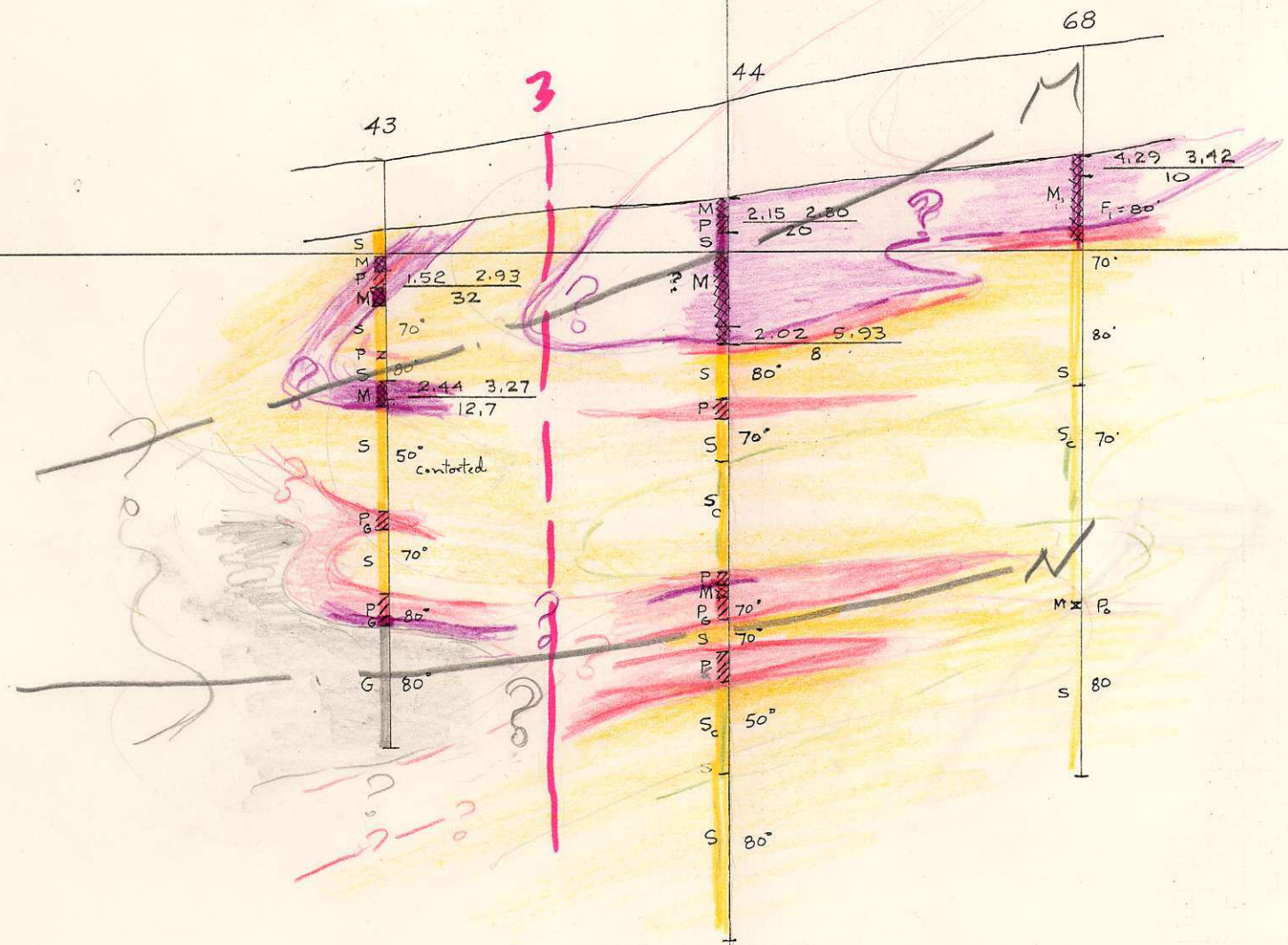
G

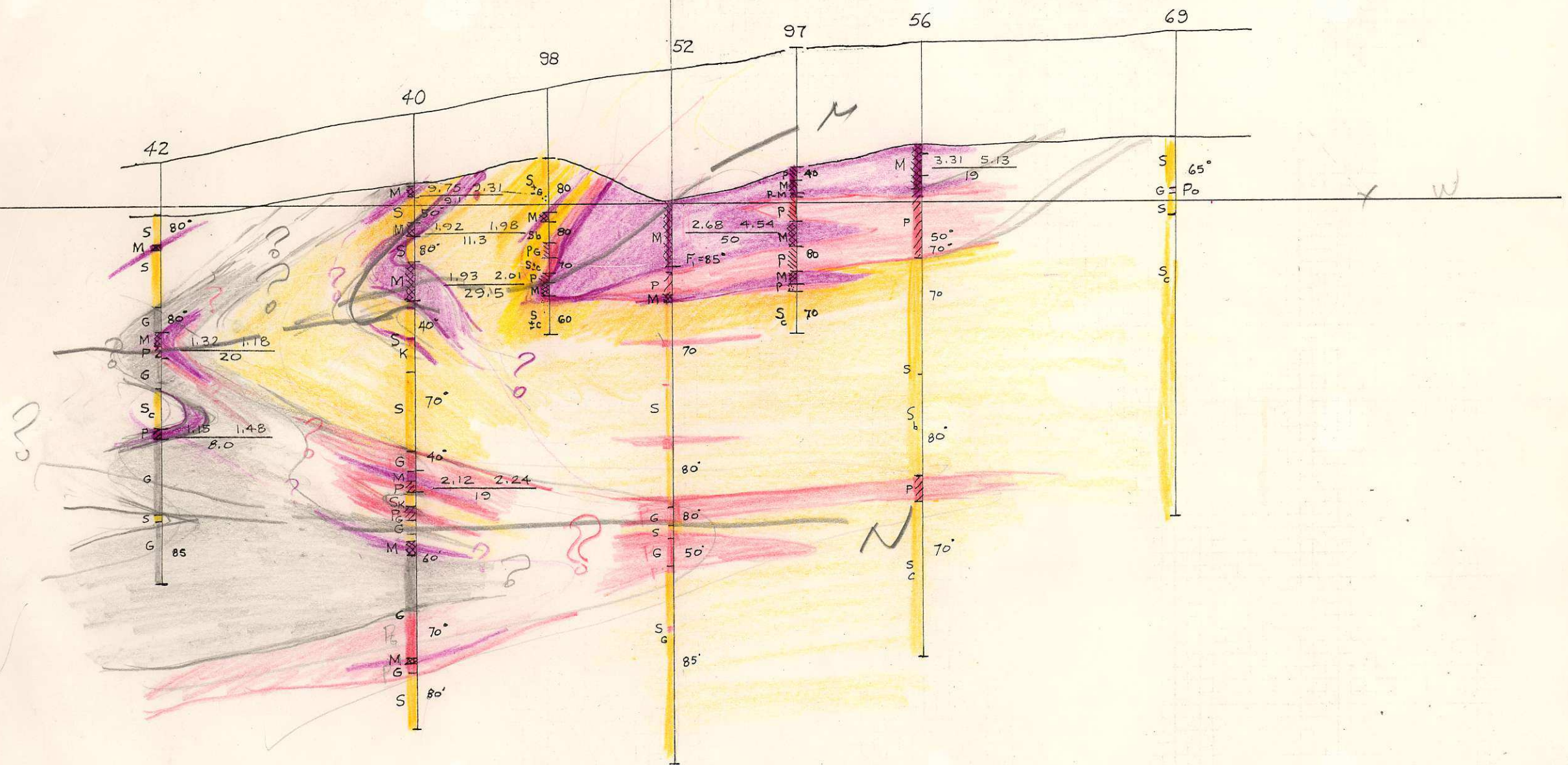
L

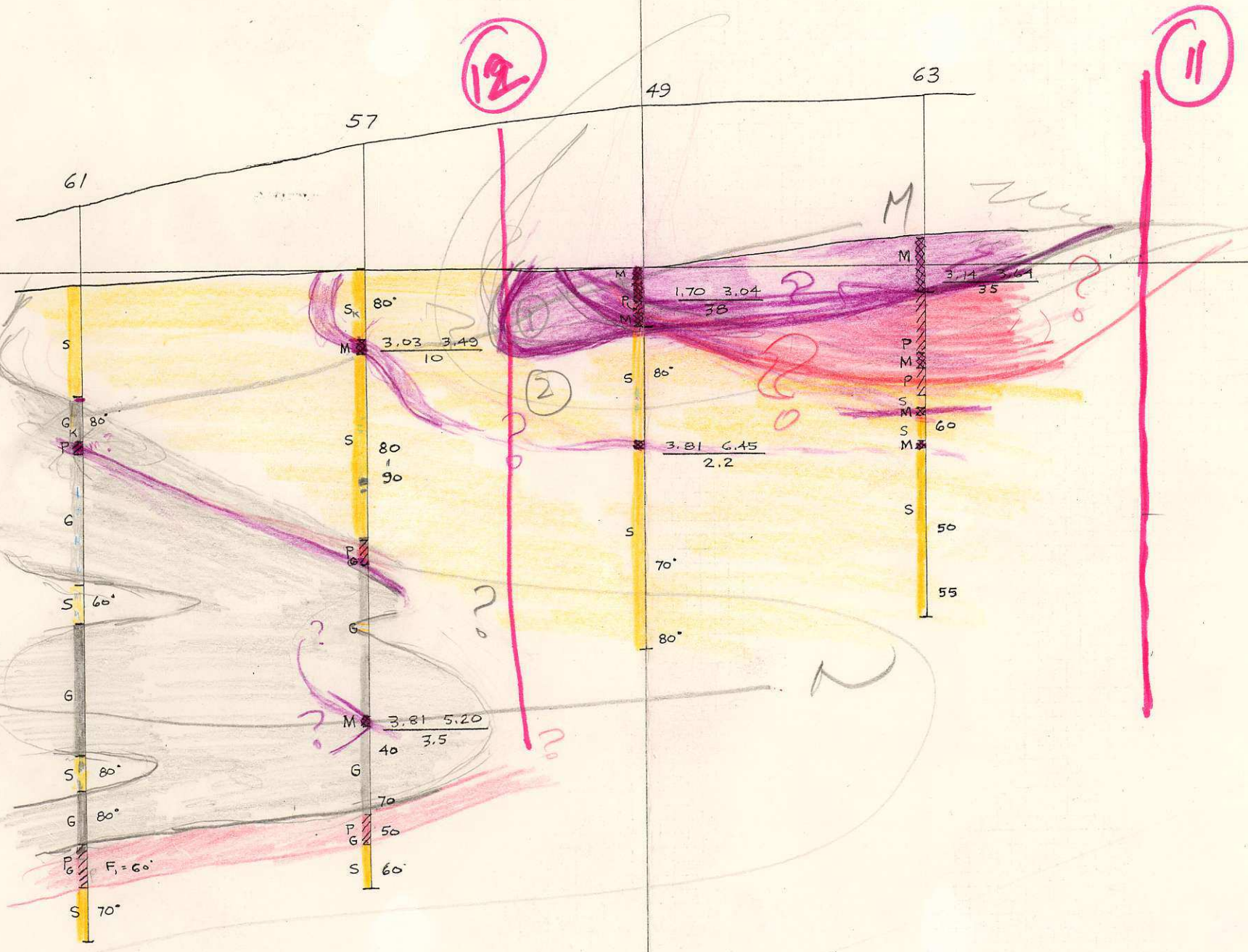


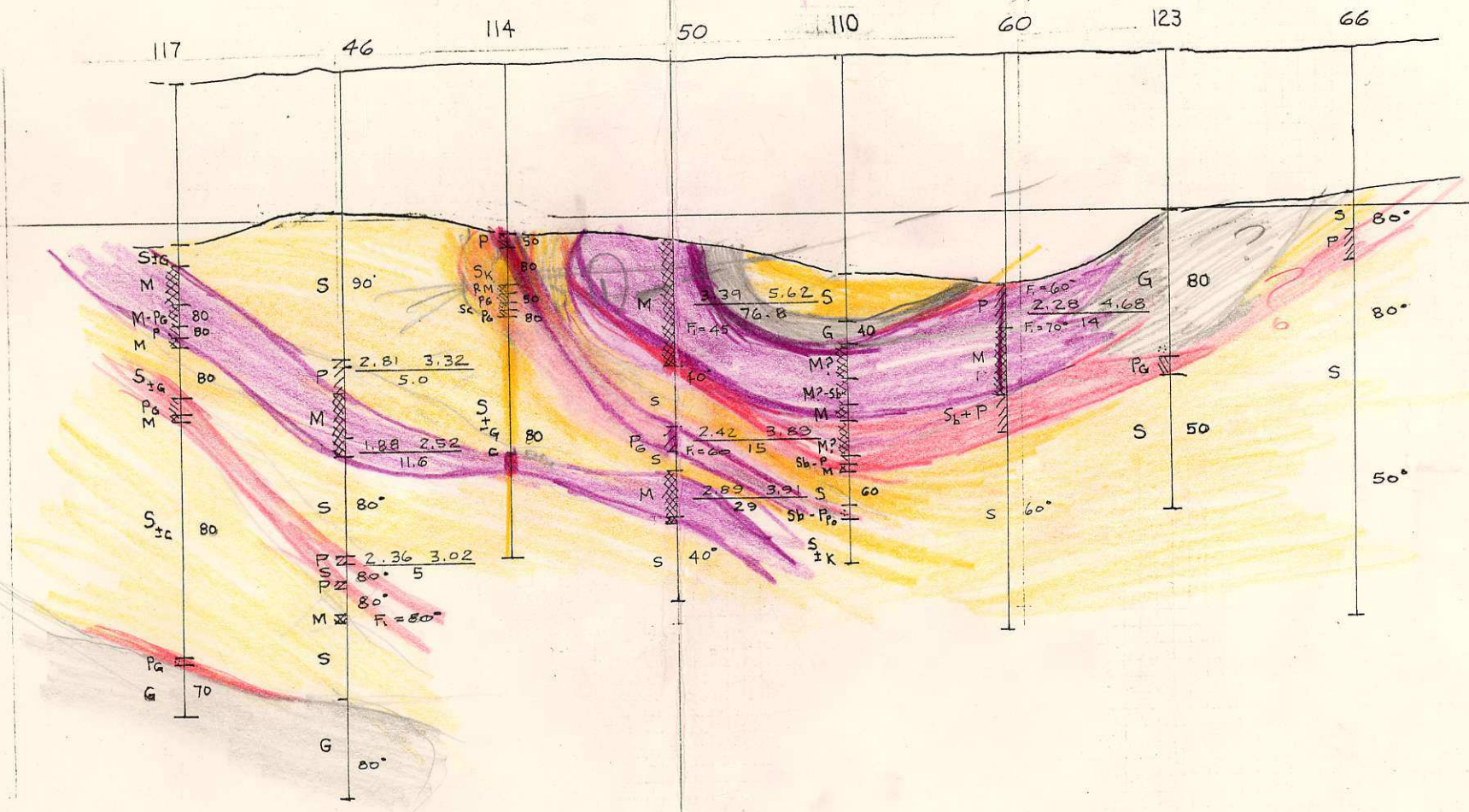
To 3.18
 To 1.67
 To 10.5

Very poor recovery









21

48

6

10
95'W

33

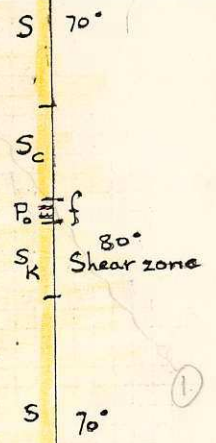
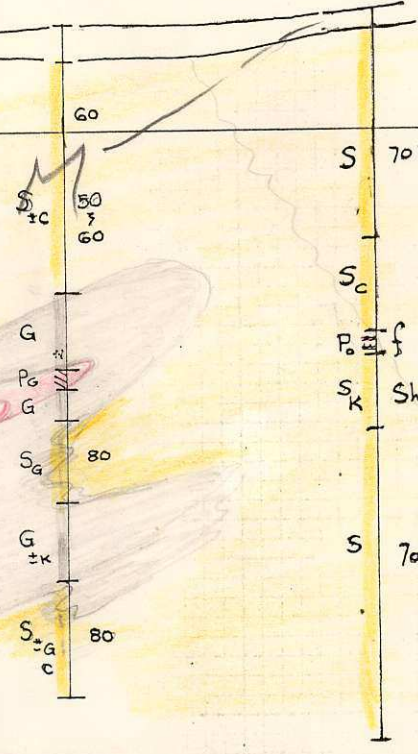
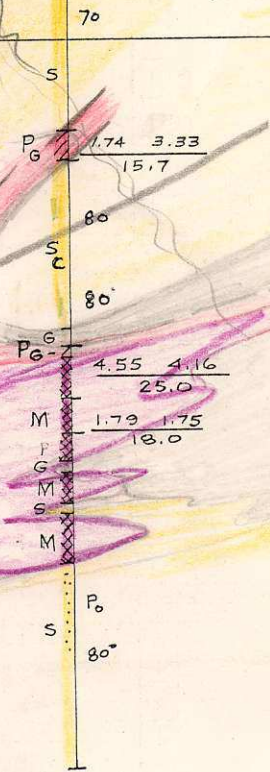
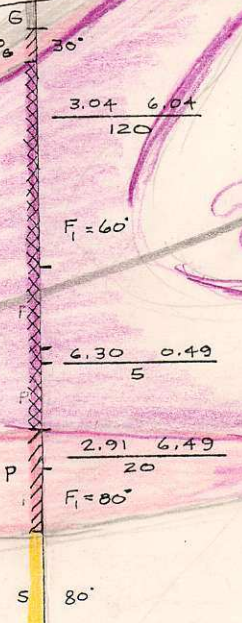
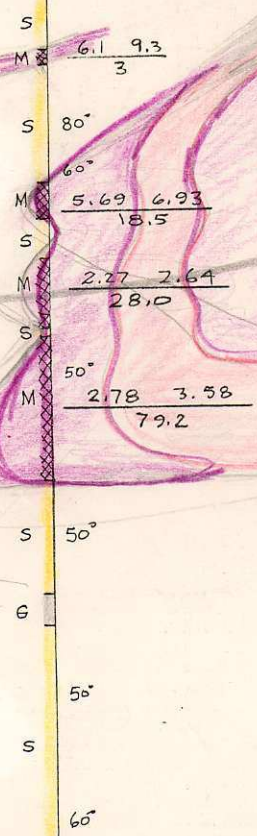
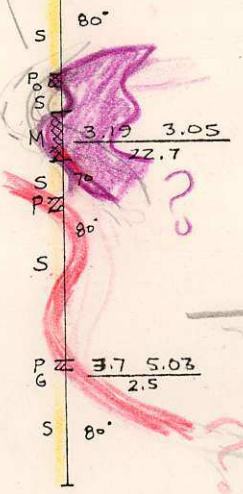
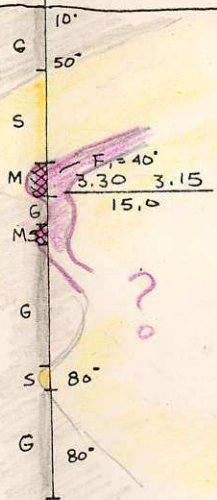
7

16 100'W

140

17

work
could be
with
crossing
DD



$F_1 = 40'$
3.30 3.15
15.0

3.19 3.05
22.7

6.1 9.3
3

3.04 6.04
120

1.74 3.33
15.7

3.7 5.03
2.5

5.69 6.93
18.5

$F_1 = 60'$

4.55 4.16
25.0

2.27 2.64
28.0

6.30 0.49
5

1.79 1.75
18.0

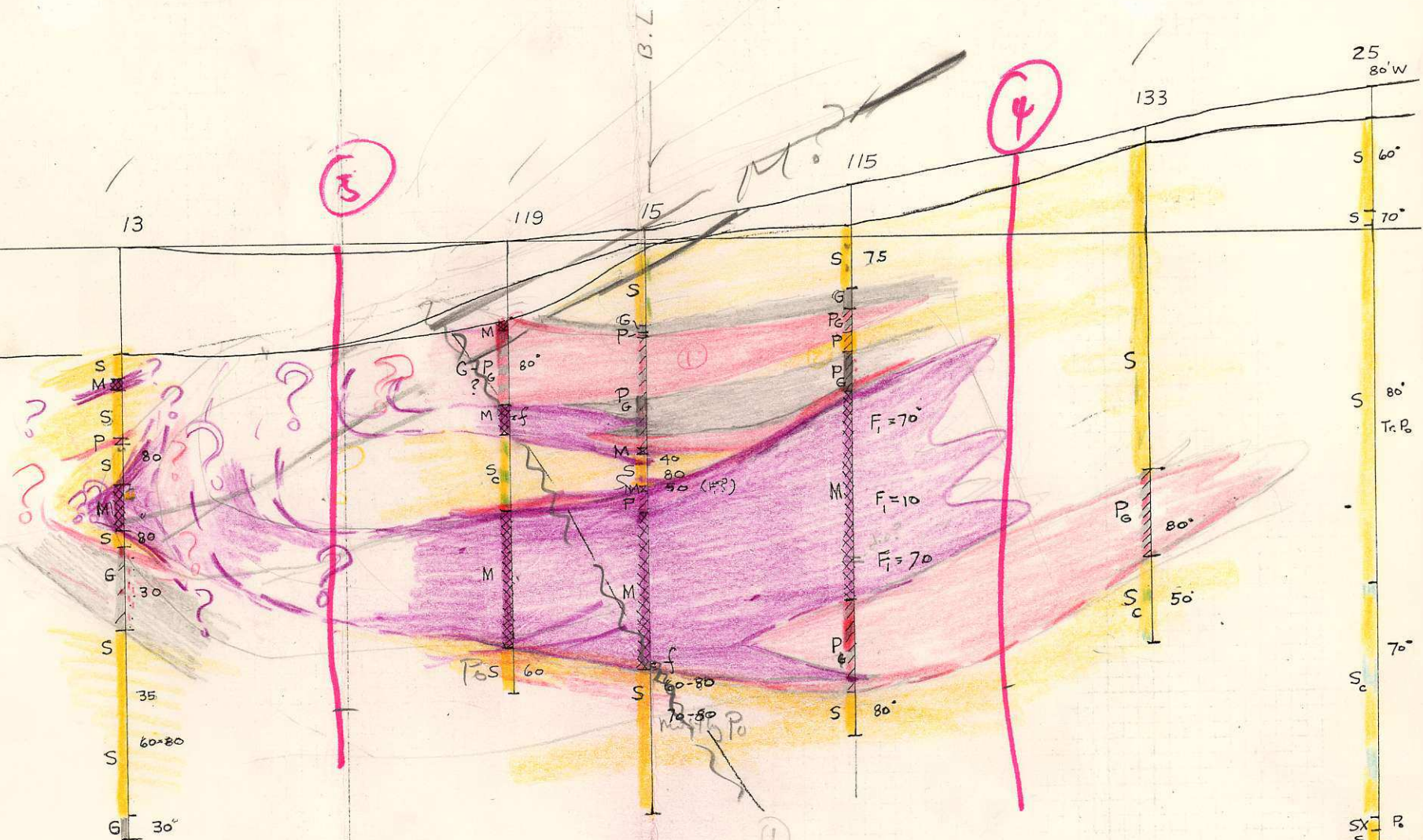
2.78 3.58
79.2

2.91 6.49
20
 $F_1 = 80'$

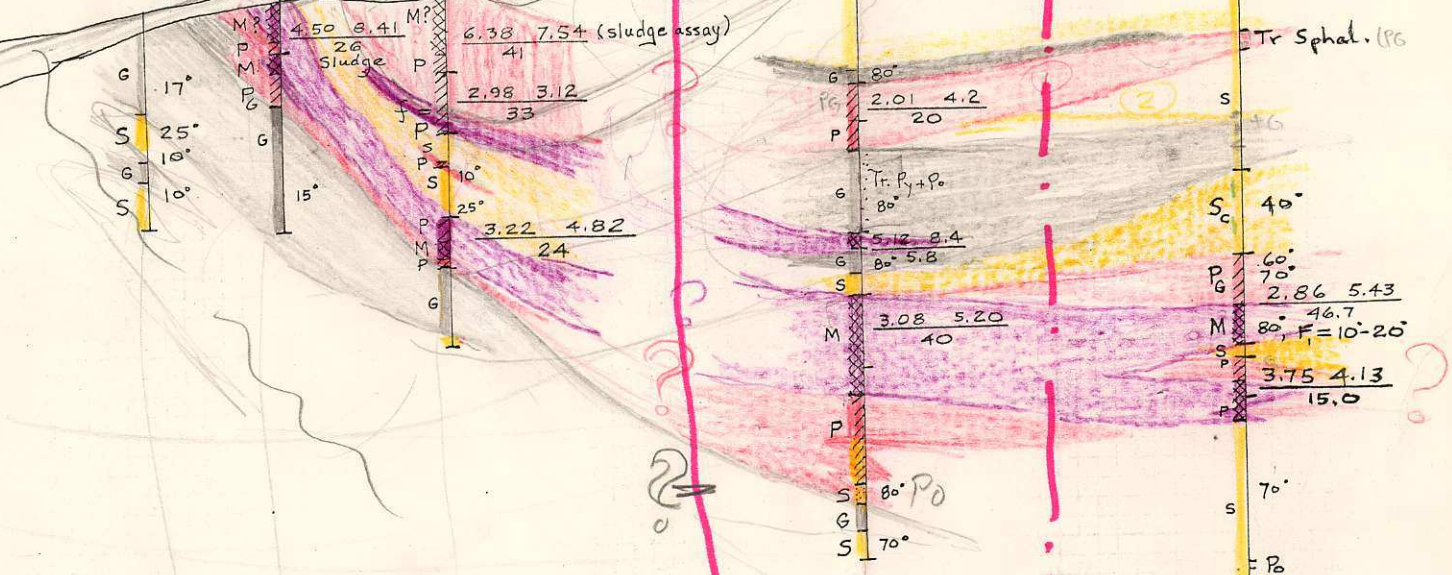
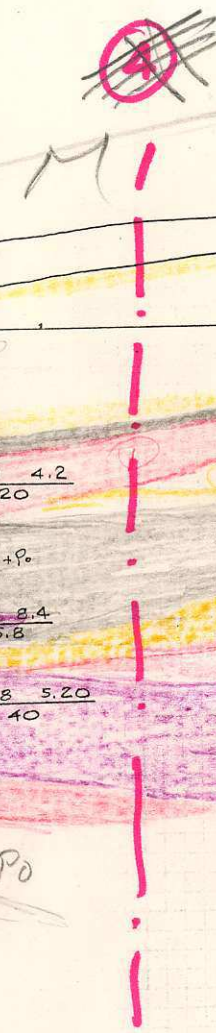
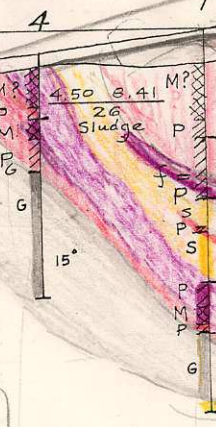
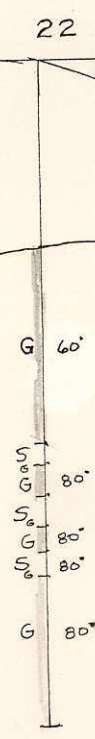
OK

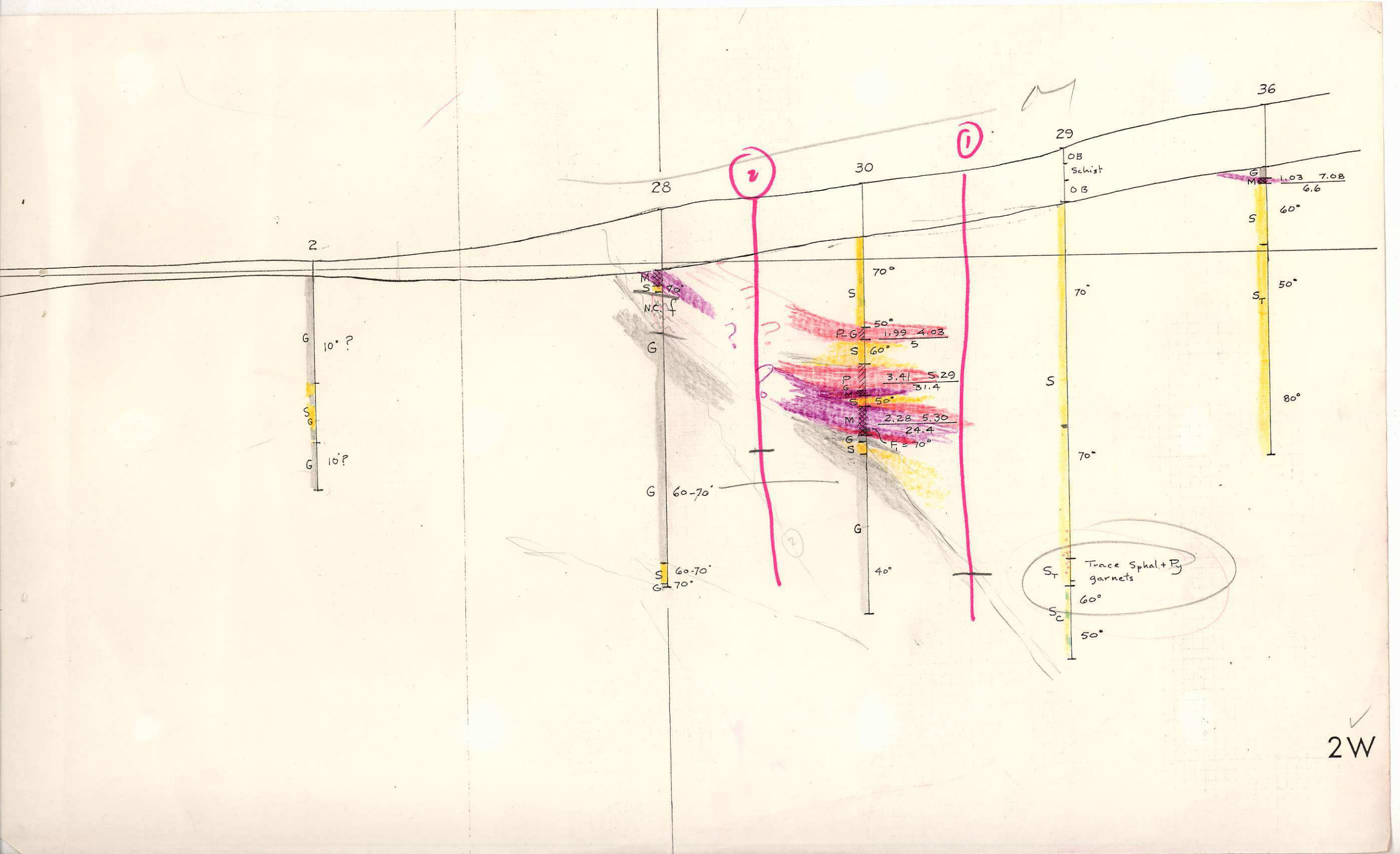
4E

LOB5 -
SRDK
AYAA MM



Poor Recovery





2
 G 10°?
 S
 G 10°?

28
 M
 S 70°
 NC, F
 G
 G 60-70°
 S 60-70°
 G 70°

2

30

70°
 S
 50°
 P, G 1.99 4.03
 S 60° 5
 3.41 5.29
 P, G 31.4
 S 50°
 M 2.28 5.30
 24.4
 G, S F = 70°
 G
 40°

1

29

OB
 Schist
 OB
 S 70°
 S
 70°
 S
 70°

36

G 1.03 7.08
 M 6.6
 S 60°
 S
 50°
 S
 80°

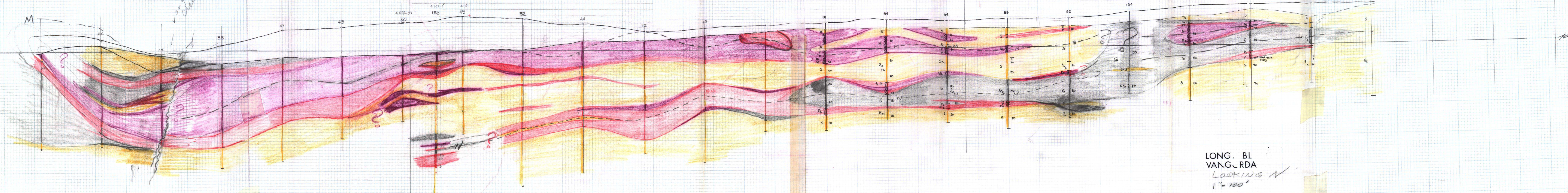
Trace Sphal + Py
 garnets
 S_T
 60°
 S_C
 50°

2W

4W 2W 0 2 4 6 8 10 12 14 16 18 20 22 24 E 26 E 28 E 30 E 32 E 34 E 36 E 38 E 40 E 42 44 46 48

Longonda Creek

M



LONG. BL
VANGARDA
LOOKING N
1" = 100'
A.Y. PO April 1978