

LOCKWOOD SURVEY CORPORATION LIMITED

CONTRACT # g. 3174
FLIGHT # Nº 15
DATE FLOWN Sept 17/65
AIRCRAFT M. 6. 6
FLYING HEIGHT 200

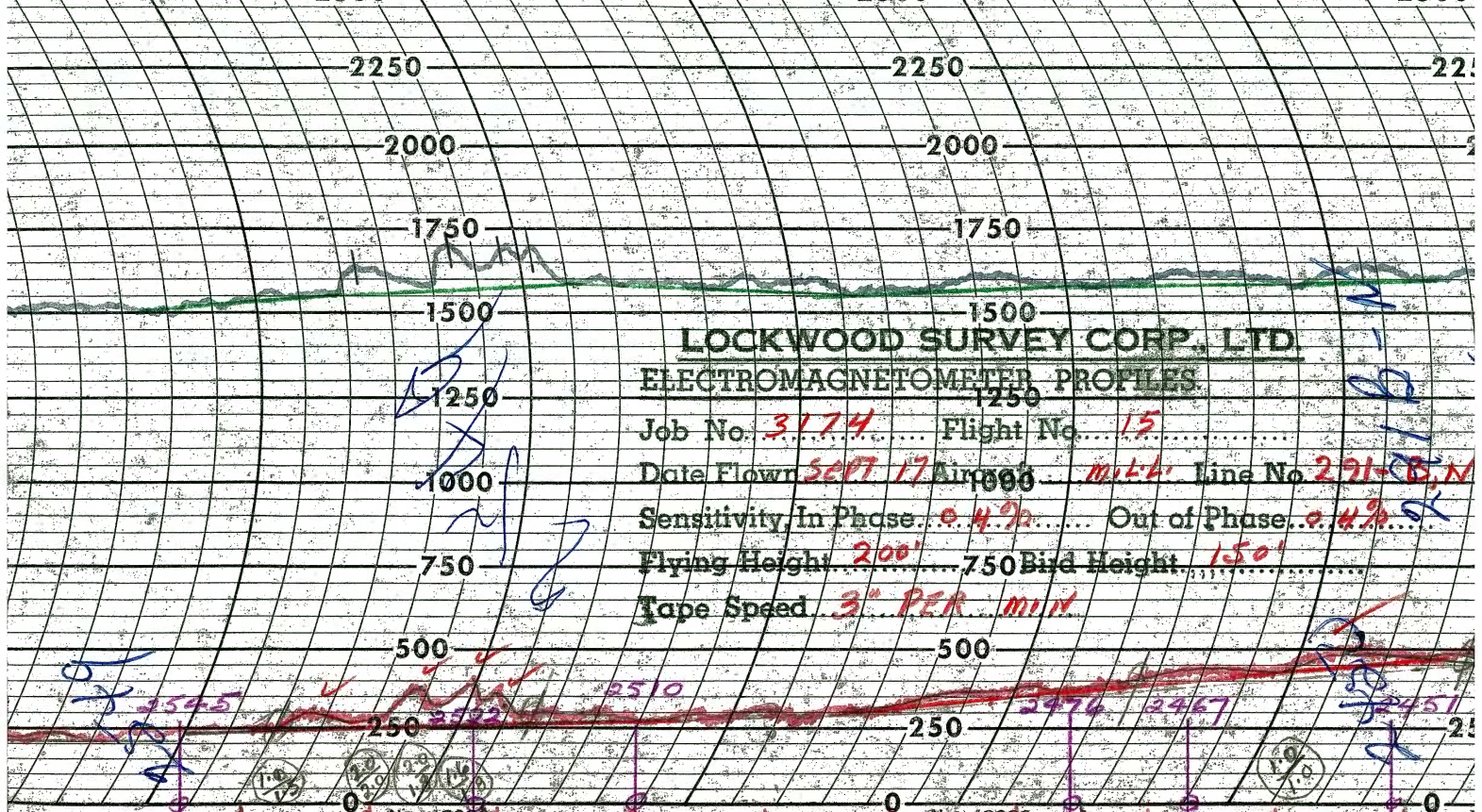
PROFILES CHART SPEED
GULF MAGNETOMETER Mk III 4 /MINUTE
SENSITIVITY 1200
APN-1 RADIO ALTIMETER...../MINUTE
SENSITIVITY.....

LINE No. 291. B.N.

017125

LOCKWOOD SURVEY CORP., LTD.
ELECTROMAGNETIC PROFILES

Job No..... Flight No.....
Date Flown..... Aircraft..... Line No.....
Sensitivity, In Phase..... Out of Phase.....
Flying Height..... Eird Height.....
Tape Speed.....



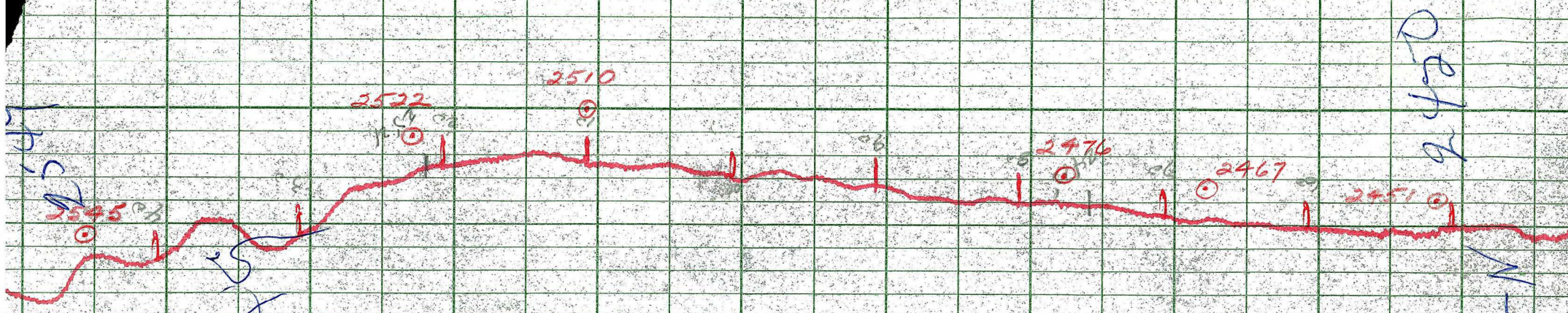
LOCKWOOD SURVEY CORP., LTD.
ELECTROMAGNETOMETER PROFILES

Job No. 3174 Flight No. 15
 Date Flown SEPT 17 1966 M.L.L. Line No. 291-B,N
 Sensitivity In Phase 0.4% Out of Phase 0.4%
 Flying Height 200' 750 Bird Height 150'
 Tape Speed 3" PER MIN

No. 43231

No. 43232





LOCKWOOD SURVEY CORP., LTD.
GULF MK 111 AIRBORNE MAGNETOMETER PROFILE

Job No. J-3174 Flight No. 15
 Date Flown SEPT. 17/60 Aircraft M.L.L. Line No. 291B-N
 Sensitivity Full Scale 1200 γ Steps 100 γ
 Height Flown 30000' Tape Speed 1.5 P.M.

291B-N
 W. H. H. H. H.

291B-N
 W. H. H. H. H.

