

**LOCKWOOD SURVEY CORPORATION LIMITED**

CONTRACT # G-3174  
FLIGHT # Nº 15  
DATE FLOWN Sept 17/65  
AIRCRAFT M46  
FLYING HEIGHT 200

PROFILES  
GULF MAGNETOMETER Mk III 4 /MINUTE  
SENSITIVITY 1200  
APN-1 RADIO ALTIMETER \_\_\_\_\_ /MINUTE  
SENSITIVITY \_\_\_\_\_

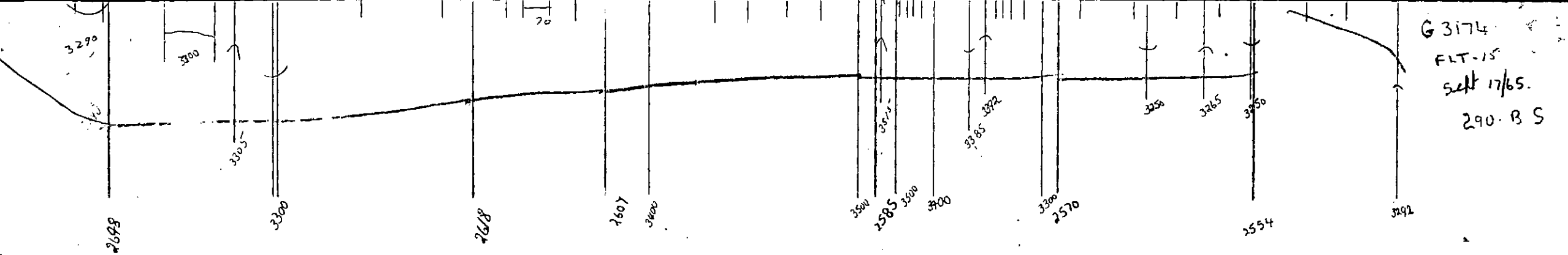
LINE No. 290 B.S.

017126

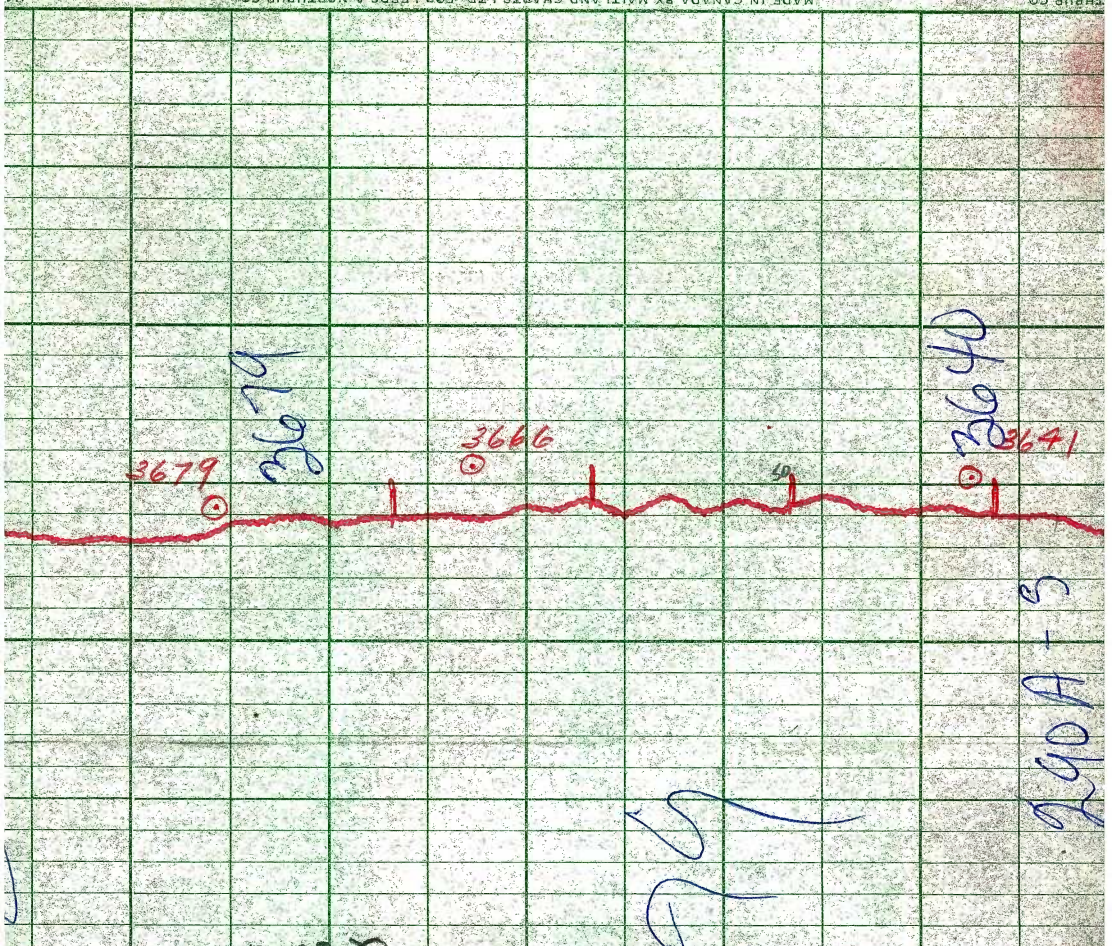
LOCKWOOD SURVEY CORP., LTD.  
ELECTROMAGNETIC TAPES

Job No. \_\_\_\_\_  
Date Flown \_\_\_\_\_ Aircraft \_\_\_\_\_ Line No. \_\_\_\_\_  
Sensitivity, In Phase \_\_\_\_\_ Out of Phase \_\_\_\_\_  
Flying Height \_\_\_\_\_ Bird Height \_\_\_\_\_  
Tape Speed \_\_\_\_\_





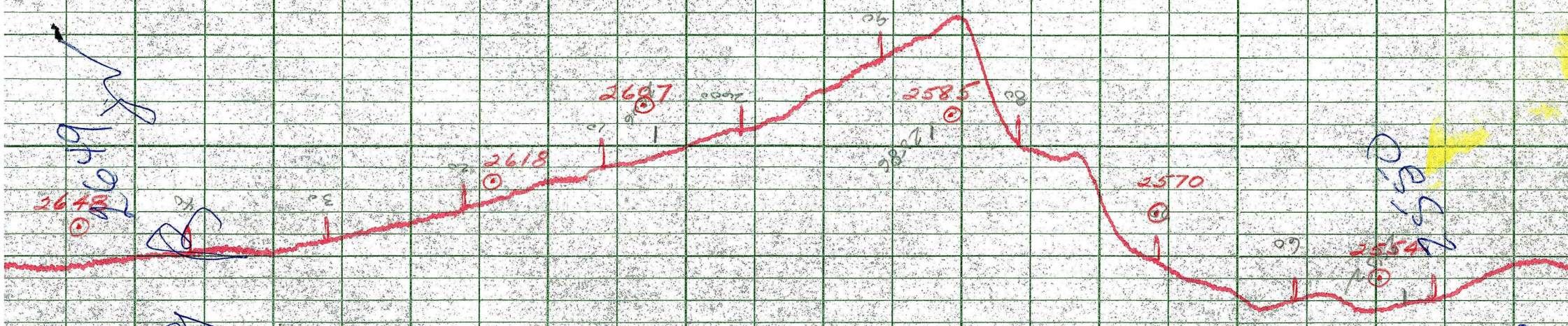
G 3174  
 FLT-15  
 Sept 17/65.  
 290. B S



3000 ♂

**LOCKWOOD SURVEY CORP., LTD.**  
**GULF MK 111 AIRBORNE MAGNETOMETER PROFILE**

Job No. J-3174..... Flight No. 13.....  
 Date Flown SEPT. 19/65 Aircraft MLL..... Line No. 290A-5  
 Sensitivity Full Scale 1200.0..... Steps 1000.0.....  
 Height Flown 200'..... Tape Speed 4" PM.....

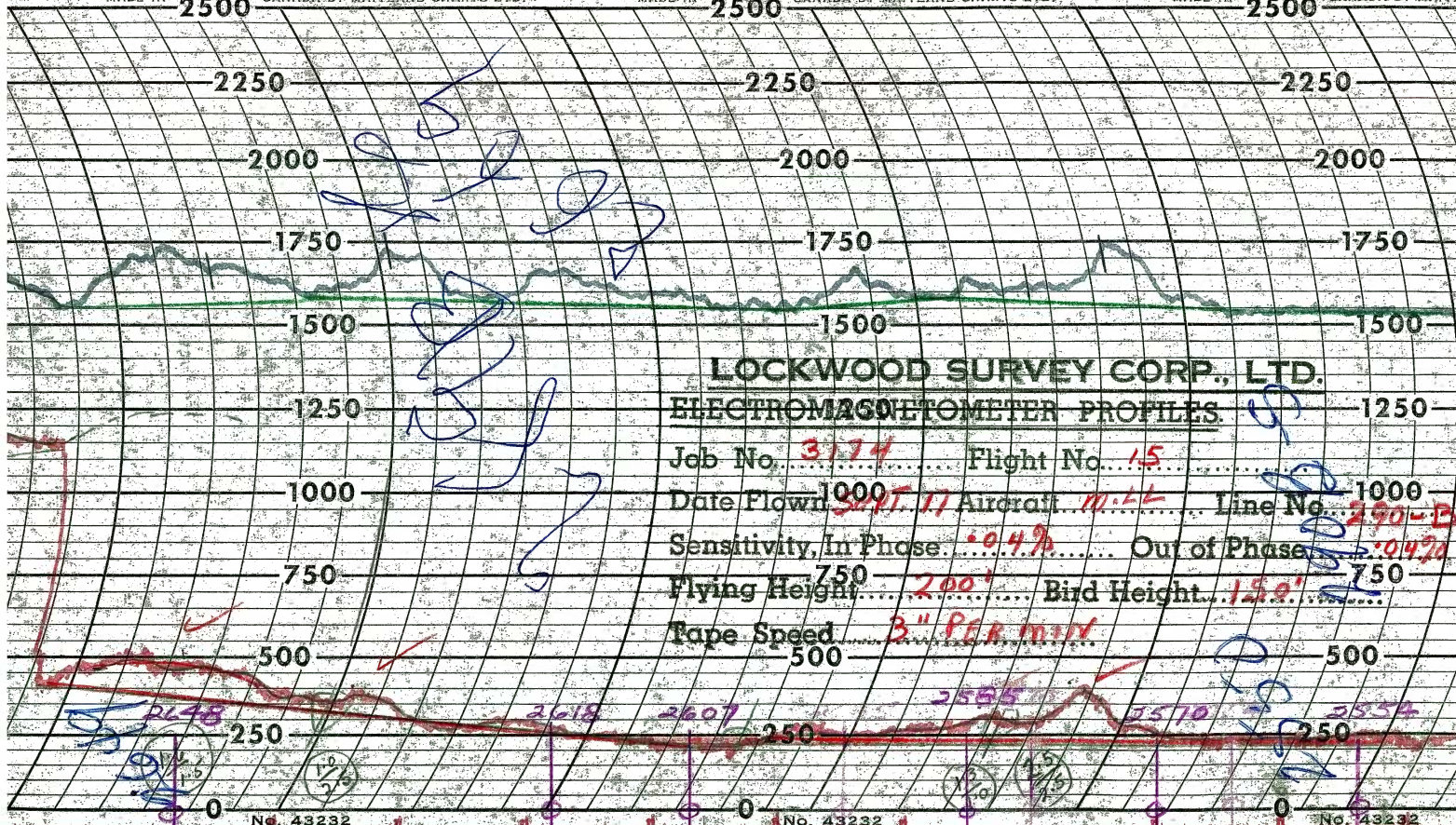


**LOCKWOOD SURVEY CORP., LTD.**  
**GULF MK 111 AIRBORNE MAGNETOMETER PROFILE**

Job No. J-3174 Flight No. 15  
 Date Flown SEPT. 17/62 Aircraft M11 Line No. 220B-5  
 Sensitivity Full Scale 1200γ Steps 1000γ  
 Height Flown 1000' Tape Speed 4" P.M.

*Handwritten blue notes:*  
 A large scribble consisting of several overlapping circles.  
 A vertical line with a circle at the top.  
 A vertical line with a circle at the bottom.

*Vertical handwritten blue notes on the right edge:*  
 S  
 1-2000  
 x  
 1-2000



**LOCKWOOD SURVEY CORP., LTD.**  
**ELECTROMAGNETOMETER PROFILES**

Job No. **3174** Flight No. **15**  
 Date Flown **Sept. 17** Aircraft **M.L.L.** Line No. **1000**  
 Sensitivity, In Phase **+0.4%** Out of Phase **+0.4%**  
 Flying Height **200'** Bird Height **150'**  
 Tape Speed **3" PER MIN.**