

LOCKWOOD SURVEY CORPORATION LIMITED

CONTRACT # G-3174
FLIGHT # 10
DATE FLOWN SEPT 8/65
AIRCRAFT M/L
FLYING HEIGHT 200'

PROFILES
GULF MAGNETOMETER Mk III 4 "/MINUTE
SENSITIVITY 1200y
APN-1 RADIO ALTIMETER _____ /MINUTE
SENSITIVITY _____

LINE No. 293-5

017130

LOCKWOOD SURVEY CORP., LTD.
ELECTRONIC SURVEYING DEPT.

Job No. _____
Date Flown _____ Line No. _____
Sensitivity, In Phase _____ Out of Phase _____
Flying Height _____ Mird Height _____
Tape Speed _____

ESTERLINE ANGUS

INDIANAPOLIS, IND., U.S.A.

CHART No. 43232X

MADE IN U.S.A.

ESTERLINE ANGUS

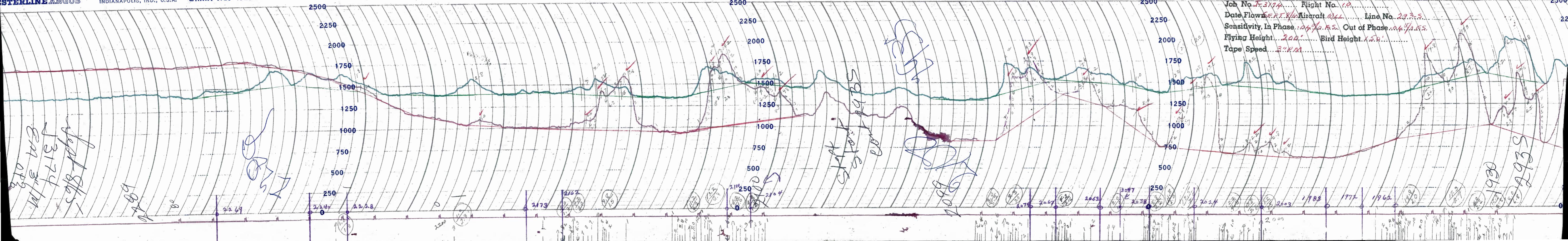
INDIANAPOLIS, IND., U.S.A.

E.S.

LOCKWOOD SURVEY CORP., LTD.

ELECTROMAGNETIC PROFILES

Job No. J-3174 Flight No. 10
 Date Flown SEP 8/65 Aircraft WLL Line No. 293-5
 Sensitivity, In Phase 0.4% F.S. Out of Phase 0.4% F.S.
 Flying Height 200' Bird Height 150'
 Tape Speed 3" P.M.

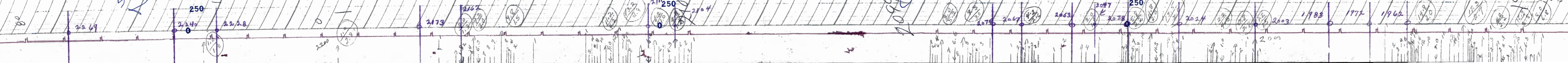


EM 3174
 Sept 8/65
 WLL

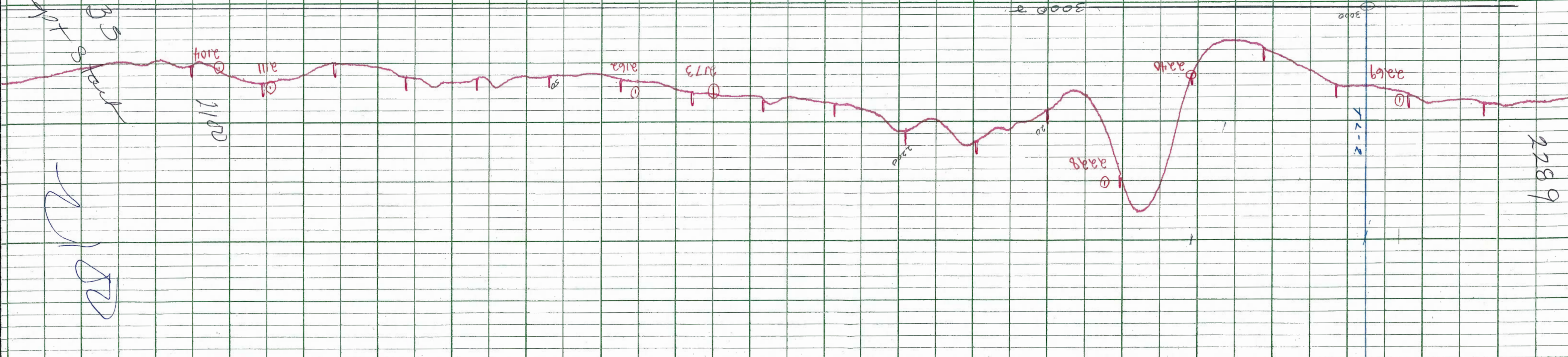
Handwritten scribbles and notes in the left margin.

shift rates
 SCB 193
 SCB 193

SCB 193
 SCB 193



LOCKWOOD SURVEY CORP., LTD.
 GULF MK III AIRBORNE MAGNETOMETER PROFILE
 Job No. J-3174 Flight No. 10
 Date flown SEPT 8/54 Micr. M.F. Line No. 298.5
 Sensitivity Full Scale 1200 Steps 1000
 Height flown 200' Tape Speed 4" PM



2085
 2095
 2095
 2095

2104

2104
 2104
 2104

2104
 2104
 2104

G-3174
T-293.5
SEPT 8/65
FLT. 10.

