

**LOCKWOOD SURVEY CORPORATION LIMITED**

CONTRACT # G 3172  
 FLIGHT # Nº 15  
 DATE FLOWN Sept 17/65  
 AIRCRAFT 7m L4  
 FLYING HEIGHT 200 ft.

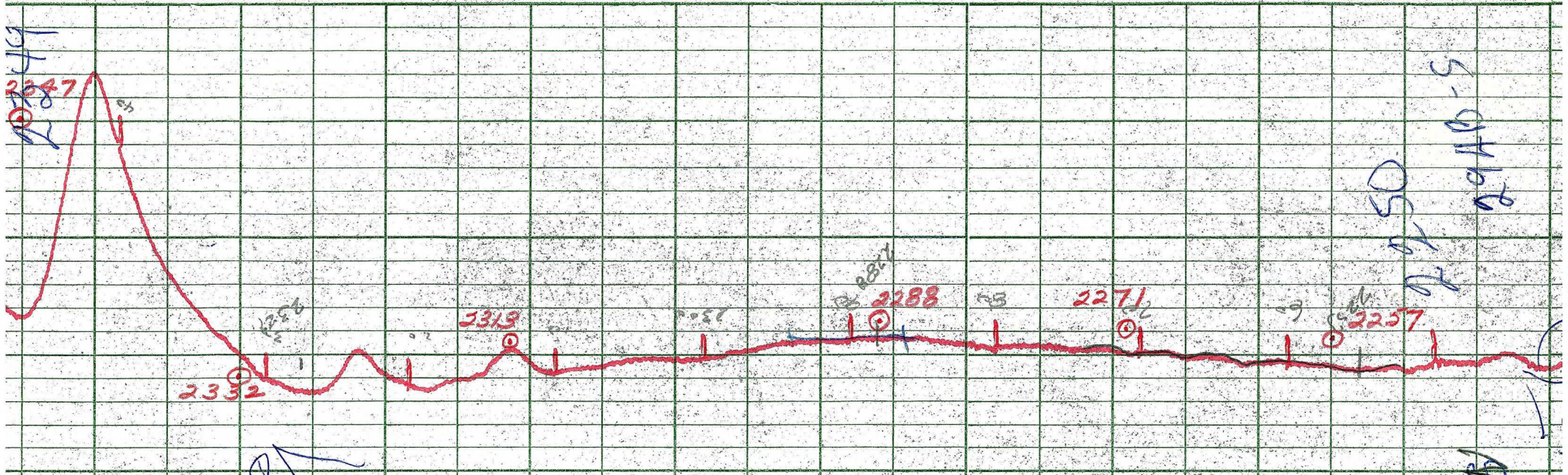
PROFILES  
 GULF MAGNETOMETER Mk III 4 P./MINUTE  
 SENSITIVITY 1200 FT.  
 APN-1 RADIO ALTIMETER...../MINUTE  
 SENSITIVITY.....

CHART SPEED  
 LINE No. 294. B.S.

017131

**LOCKWOOD SURVEY CORP., LTD.**  
**ELECTROMAGNETOMETER PROFILES.**

Job No..... Flight No.....  
 Date Flown..... Aircraft..... Line No.....  
 Sensitivity, In Phase..... Out of Phase.....  
 Flying Height..... Bird Height.....  
 Tape Speed.....

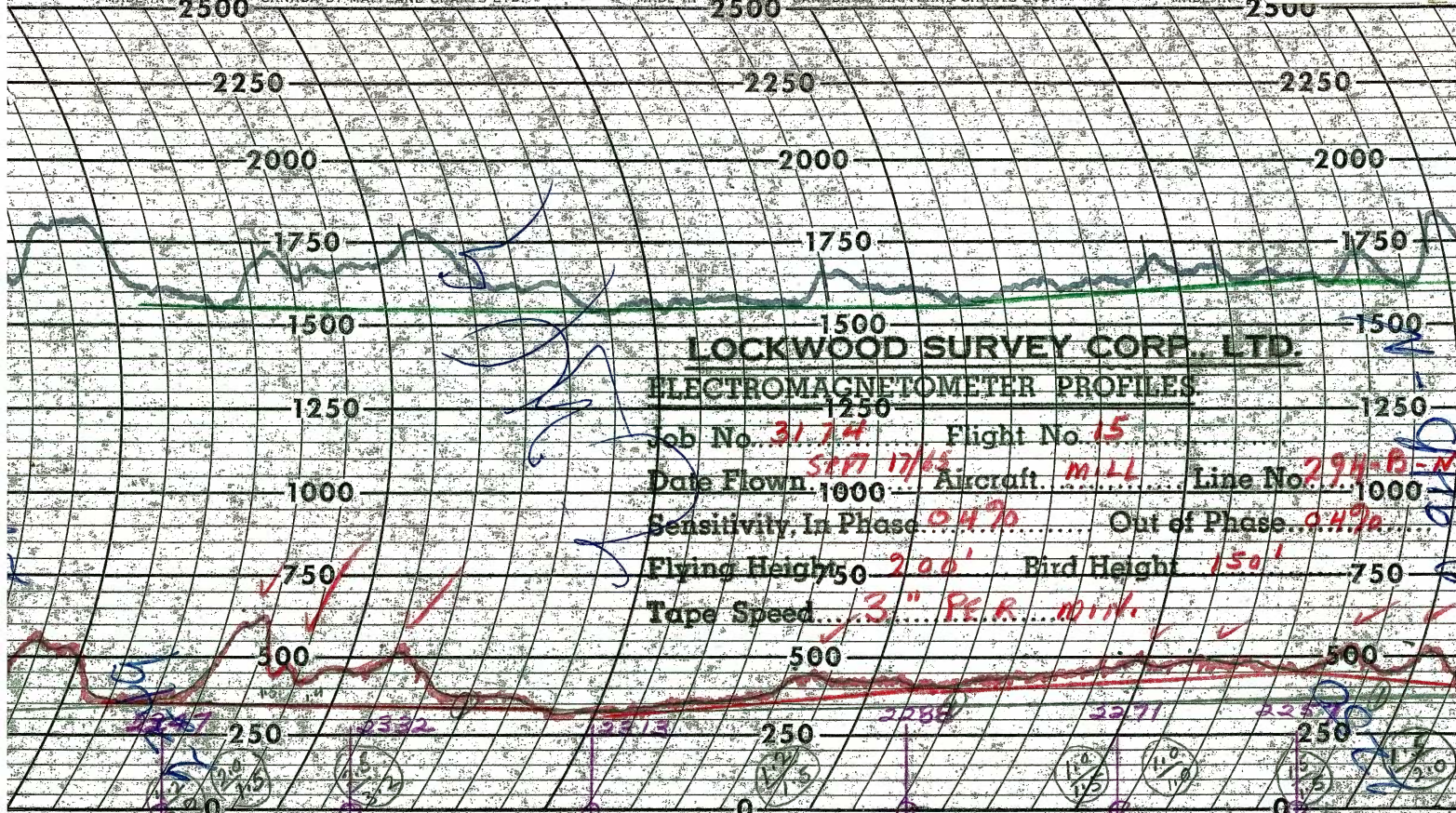


**LOCKWOOD SURVEY CORP., LTD.**  
**GULF MK 111 AIRBORNE MAGNETOMETER PROFILE**

Job No. J 3174..... Flight No. 15.....  
 Date Flown SEPT 17/65 Aircraft M 44..... Line No. 2948-N  
 Sensitivity Full Scale 1200γ..... Steps 100γ.....  
 Height Flown 1000'..... Tape Speed 4"PM.....

S  
 2948-N  
 2966

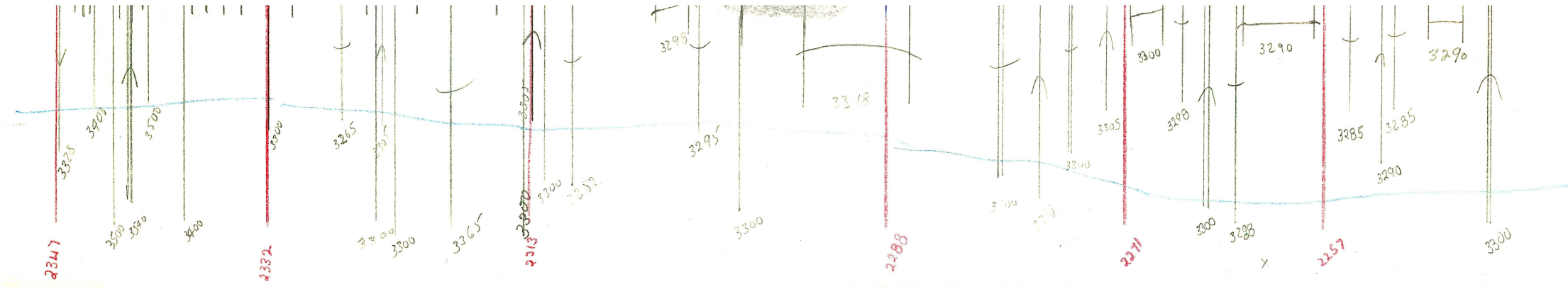
2948-N  
 2966



# LOCKWOOD SURVEY CORP. LTD.

## ELECTROMAGNETOMETER PROFILES

Job No. 3174 Flight No. 15  
 Date Flown SEP 17/65 Aircraft. MILL Line No. 294-B-N  
 Sensitivity, In Phase 0.4% Out of Phase 0.4%  
 Flying Height 200' Bird Height 150'  
 Tape Speed 3" P.P.R.



G 3174  
 FLT 15  
 Sept-17  
 294-B.S.  
 T.E.

CKD  
 BY  
 mc