

**LOCKWOOD SURVEY CORPORATION LIMITED**

CONTRACT # 7-3174  
FLIGHT # 11  
DATE FLOWN Sept 9/65  
AIRCRAFT MLL  
FLYING HEIGHT 200'

PROFILES  
GULF MAGNETOMETER Mk III 4" / MINUTE  
SENSITIVITY 1200  
APN-1 RADIO ALTIMETER \_\_\_\_\_ MINUTE  
SENSITIVITY \_\_\_\_\_

LINE No. 294-N

017132

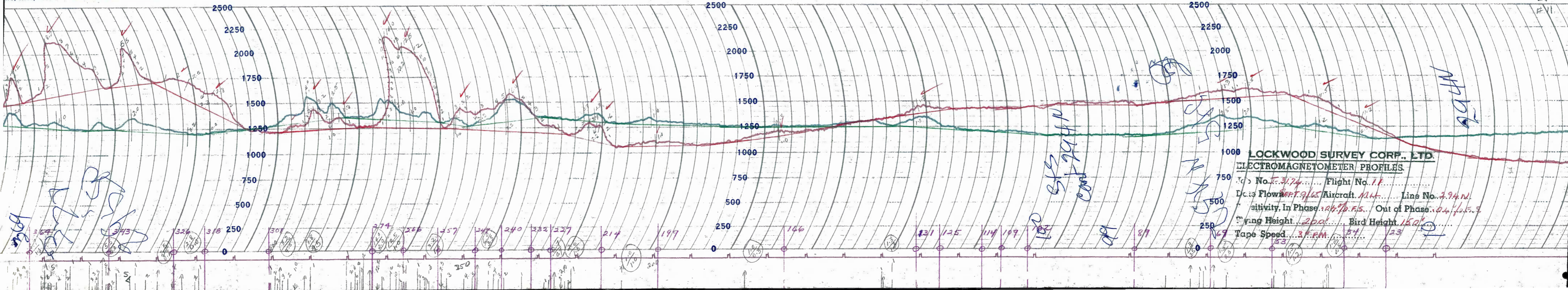
**LOCKWOOD SURVEY CORP., LTD.**  
**ELECTROMAGNETIC METER PROFILES**

Job No..... Flight No.....  
Date Flown..... Aircraft..... Line No.....  
Sensitivity, In Phase..... Out of Phase.....  
Flying Height..... Bird Height.....  
Tape Speed.....



Job - G - 31-14  
 Flt - 11  
 Date - 8/14-2/65  
 HI





**LOCKWOOD SURVEY CORP., LTD.**  
**ELECTROMAGNETOMETER PROFILES**

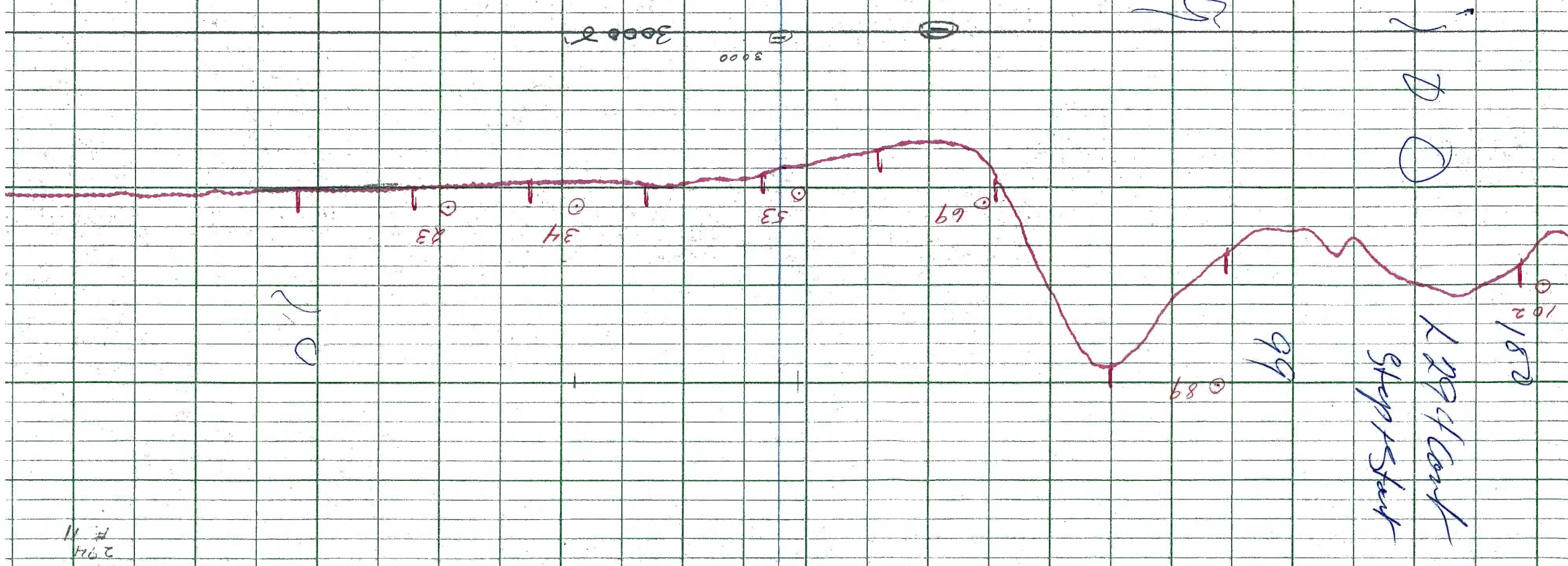
Profile No. J-3174 Flight No. 11  
 Date Flown SEPT. 9/65 Aircraft M.H. Line No. 294 N.  
 Sensitivity, In Phase 1.04 γ G.F.S. Out of Phase 0.4 γ G.F.S.  
 Flying Height 200' Bird Height 150'  
 Tape Speed 3 RPM

NAD 1000  
 NAD 1000  
 NAD 1000

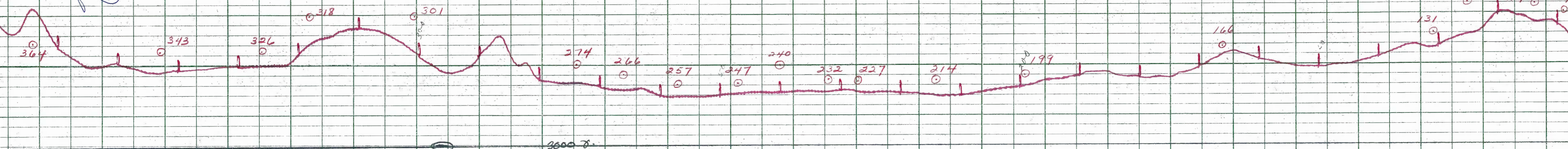
NAD 1000

LOCKWOOD SURVEY CORP., LTD.  
 GULF MK III AIRBORNE MAGNETOMETER PROFILE  
 Job No. 3174 Flight No. 11  
 Date Flown 5/11/54 Aircraft M1L Line No. 294-N  
 Sensitivity Full Scale 1200 Steps 1000  
 Height Flown 200' Tape Speed 4" Per Min

294-N  
 5/11/54  
 M1L  
 11



369  
2955



**LOCKWOOD SURVEY CORP., LTD.**  
**GULF MK 111 AIRBORNE MAGNETOMETER PROFILE**  
Job No. 31.24 Flight No. 11  
Date Flown SEPT 9 Aircraft M.L.L. Line No. 294-N  
Sensitivity Full Scale 1200γ Steps 1000γ  
Height Flown 200 Tape Speed 4" PER MIN

295

295