

**LOCKWOOD SURVEY CORPORATION LIMITED**

CONTRACT # 3-3174  
FLIGHT # 15  
DATE FLOWN Sept 17/65  
AIRCRAFT N-L-L  
FLYING HEIGHT 200'

PROFILES  
GULF MAGNETOMETER Mk III 4" / MINUTE  
SENSITIVITY 1200 x  
APN-1 RADIO ALTIMETER \_\_\_\_\_ /MINUTE  
SENSITIVITY \_\_\_\_\_

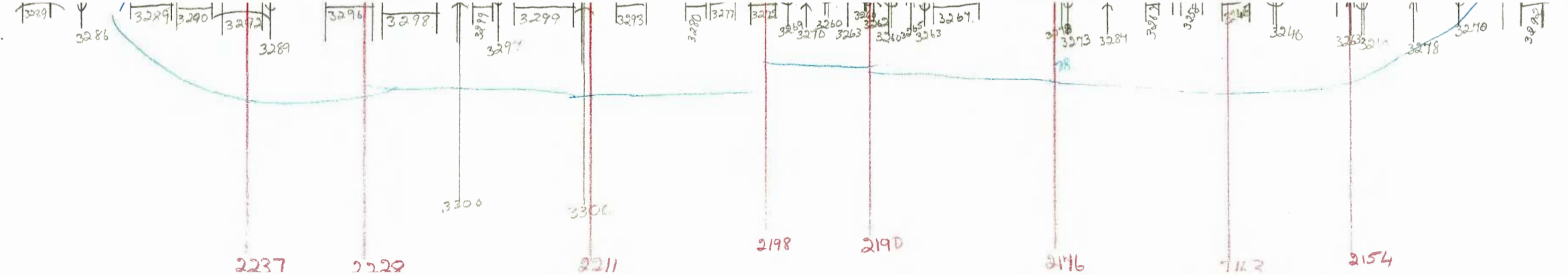
LINE No. 295-B-S

017133

**LOCKWOOD SURVEY CORP., LTD.**  
**ELECTROMAGNETOMETER PROFILES**

Job No..... Flight No.....  
Date Flown..... Aircraft..... Line No.....  
Sensitivity, In Phase..... Out of Phase.....  
Flying Height..... Bird Height.....  
Tape Speed.....

Job - G-3174  
 Flt - 15  
 Date - Sept 17/65  
 LN - 295-B-S



Job - G-3174  
 Flt - 15  
 Date - Sept 17/65  
 LN - 295-B-S  
 AT

# LO KW OD URLEY CORP. LTD.

## ELECTROMAGNETOMETER PROFILES.

ID. CHARTS LTD. MADE IN CANADA BY MAITLAND CHARTS LTD. MADE IN CANADA BY MAITLAND CHARTS LTD. MADE IN

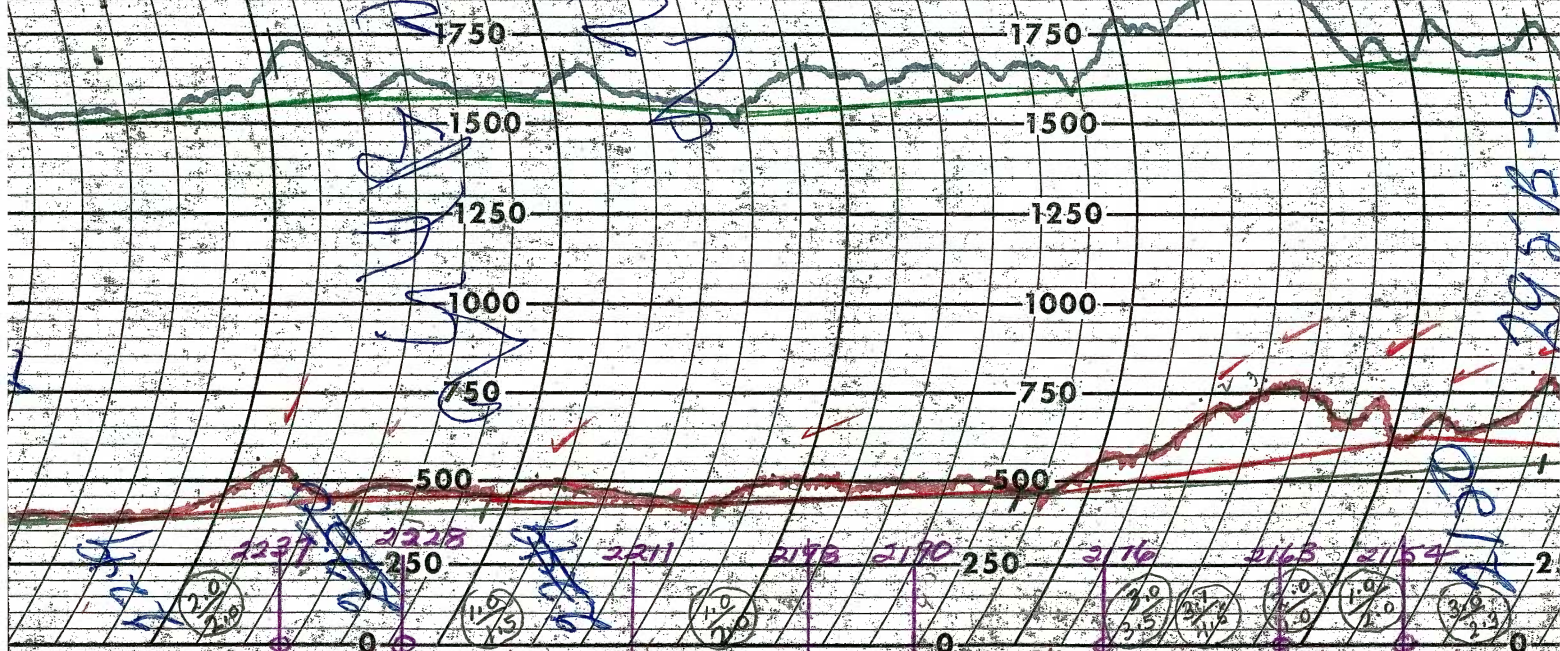
Job No. **3174** Light No. **13** 2500 2500 2500

Date Flown **SEPT 15** Aircraft **MILL** Line No. **295-B-5** 2250 2250 22

Sensitivity In Phase **0.05%** Out of Phase **0.4%**

Flying Height **200'** Bird Height **150'** 2000 2000

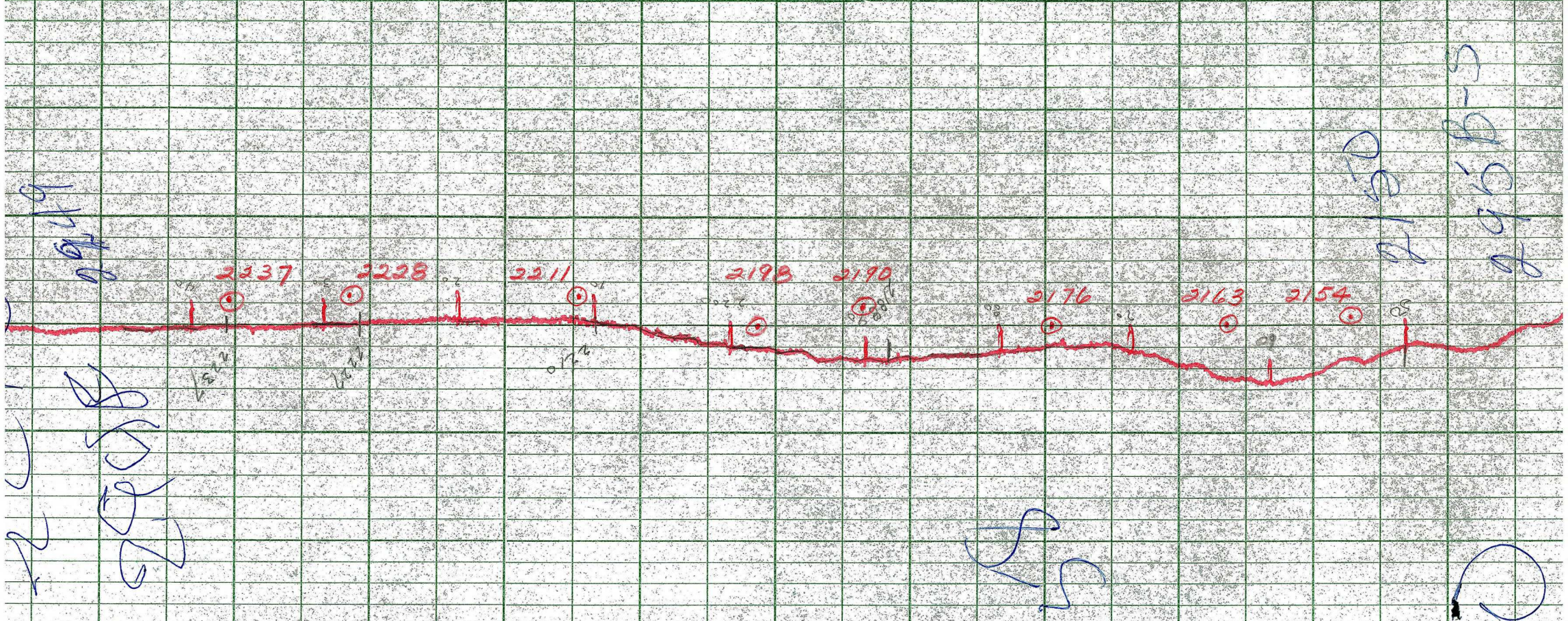
Tape Speed **3" PER MIN** 1750 1750



No. 43232

No. 43232





**LOCKWOOD SURVEY CORP., LTD.**  
**GULF MK 111 AIRBORNE MAGNETOMETER PROFILE**

Job No. J-3174 ..... Flight No. 15 .....  
 Date Flown SEPT. 17/65 Aircraft M4-L ..... Line No. 27573-5  
 Sensitivity Full Scale 1700 ..... Steps 1000 .....  
 Height Flown 1500 ..... Tape Speed 4" P.M. .....