

LOCKWOOD SURVEY CORPORATION LIMITED

CONTRACT # 3174
FLIGHT # 11
DATE FLOWN Sept 9-65
AIRCRAFT MLL
FLYING HEIGHT 200

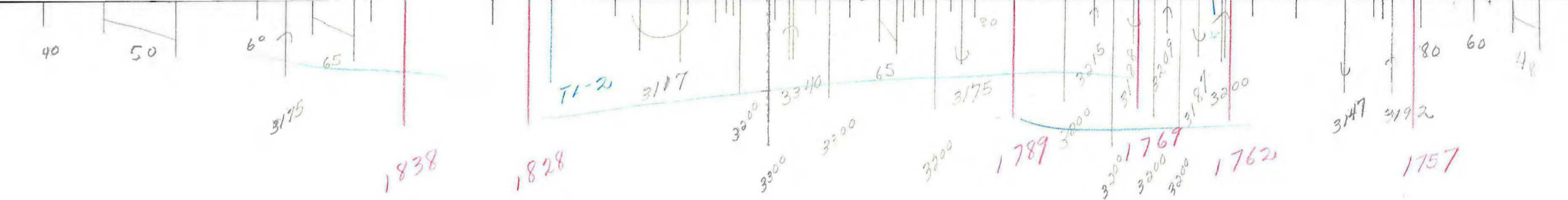
PROFILES CHART SPEED
GULF MAGNETOMETER Mk III 4 /MINUTE
SENSITIVITY 1200
APN-1 RADIO ALTIMETER /MINUTE
SENSITIVITY

LINE No. 295 S

017134

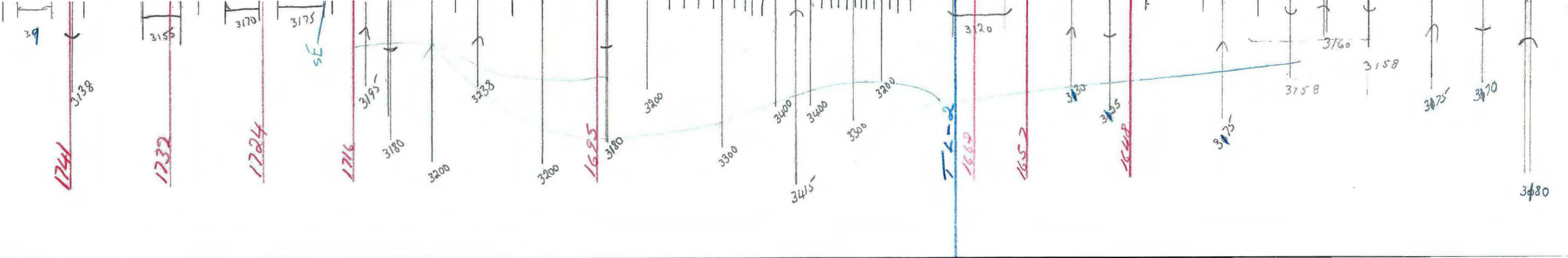
LOCKWOOD SURVEY CORP., LTD.
ELECTROMAGNETOMETER PROFILES.

Job No..... Flight No.....
Date Flown..... Aircraft..... Line No.....
Sensitivity, In Phase..... Out of Phase.....
Flying Height..... Bird Height.....
Tape Speed.....



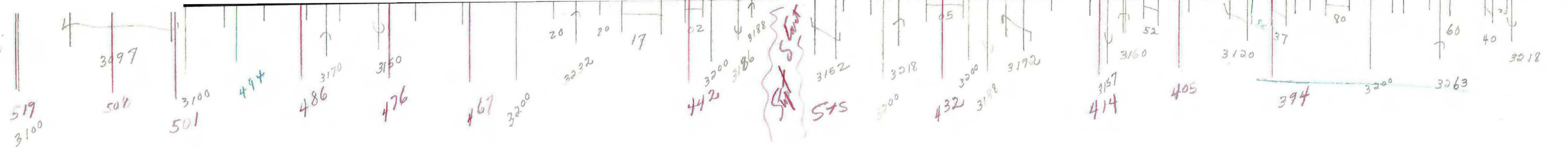
G 3174
 Sept 9-65
 T 2955
 0 →

G-3174
FLT-II
SEPT 9/65
296-N



G3174
FLT-II
SEPT 9/65
296-N
TE

10/17/65

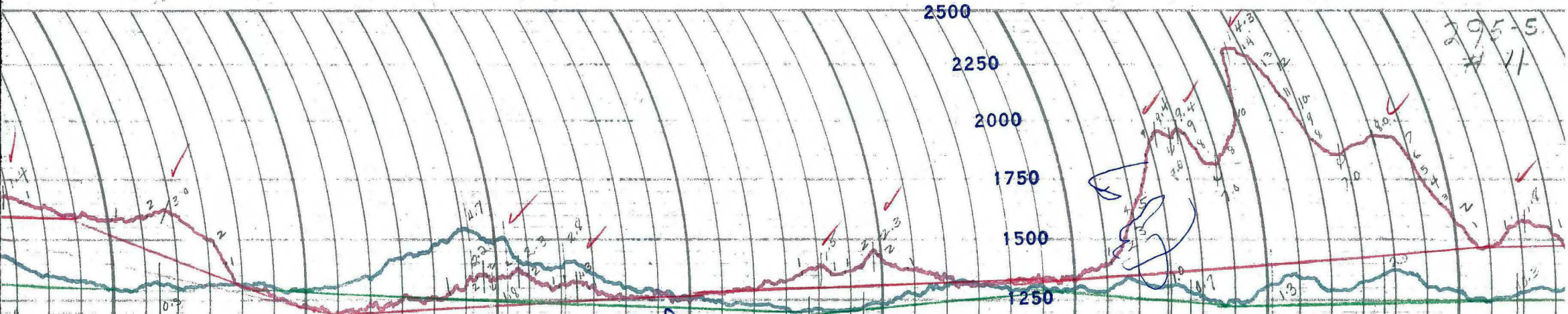


G 3174

Sept 7-65

T 2955

Dexter Ew



LOCKWOOD SURVEY CORP., LTD.
ELECTROMAGNETOMETER PROFILES.

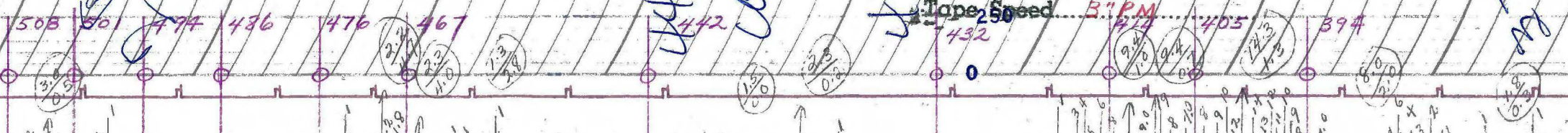
Job No. J-3174 Flight No. 11
 Date Flown SEPT 9/45 Aircraft MLL Line No. 295-S-296
 Sensitivity In Phase 100% Out of Phase 10%
 Flying Height 200' Bird Height 150'
 Tape Speed 3" PM

5-Sett off

6-Sett

5-Sett

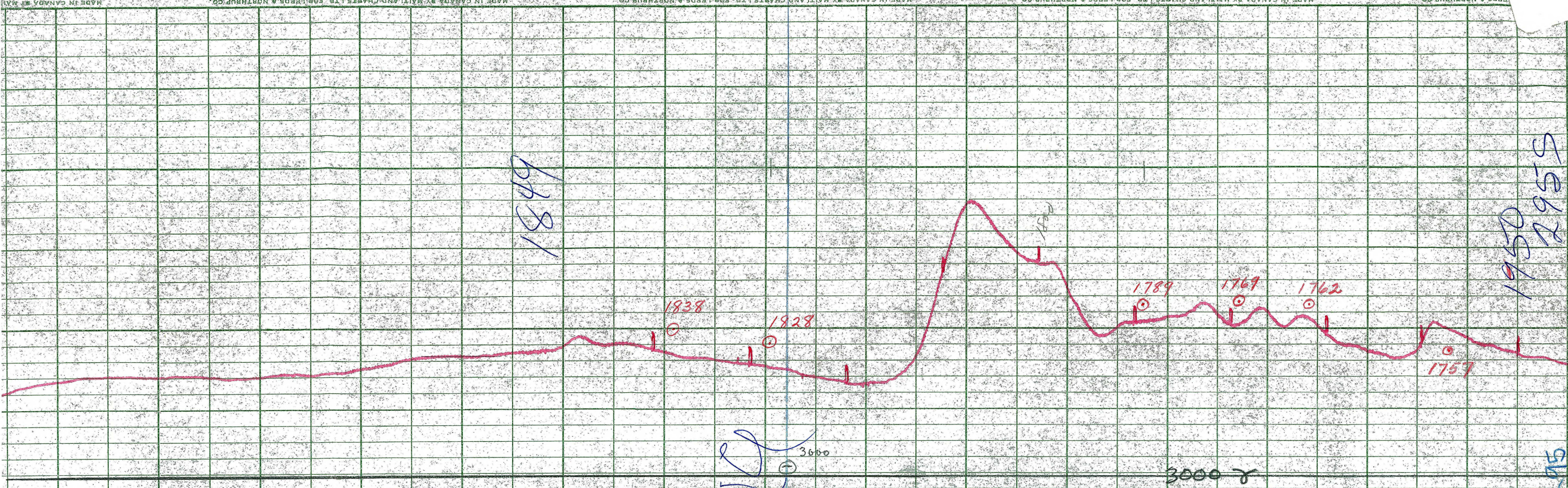
6-Sett



295-S-296

LOCKWOOD SURVEY CORP., LTD.
ULF MK 111 AIRBORNE MAGNETOMETER PROFILE

Job No. 3.17.4 Flight No. 11
Date Flown 1947.9 Aircraft M.L.L. Line No. 295-15
Sensitivity Full Scale 1200 γ Steps 1000 γ
Height Flown 200' Tape Speed 4" PER MIN



1849

1950
295-15

295-15

5
M.L.L.

3600
3000
T-1-1