

**LOCKWOOD SURVEY CORPORATION LIMITED**

CONTRACT # 3174  
FLIGHT # 11  
DATE FLOWN Sept 9/65  
AIRCRAFT MLL  
FLYING HEIGHT 200

PROFILES  
GULF MAGNETOMETER Mk III 4 /MINUTE  
SENSITIVITY 1200  
APN-1 RADIO ALTIMETER...../MINUTE  
SENSITIVITY.....

LINE No. <sup>2</sup> 296-N

017136

**LOCKWOOD SURVEY CORP., LTD.**  
**ELECTROMAGNETOMETER PROFILES.**

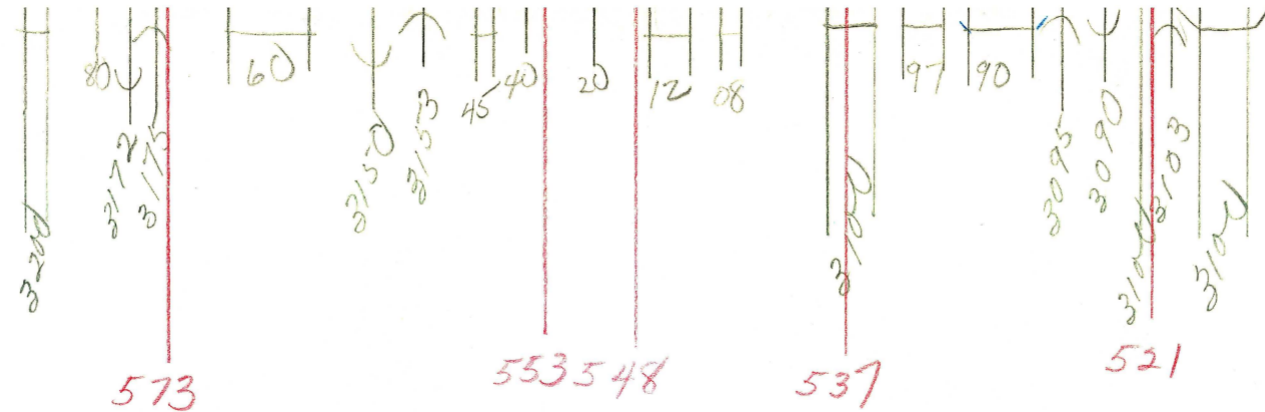
Job No..... Flight No.....  
Date Flown..... Aircraft..... Line No.....  
Sensitivity, In Phase..... Cut of Phase.....  
Flying Height..... Bird Height.....  
Tape Speed.....

G 3174 MLL

FLT # 11  
Sept 9/65

296-N

je

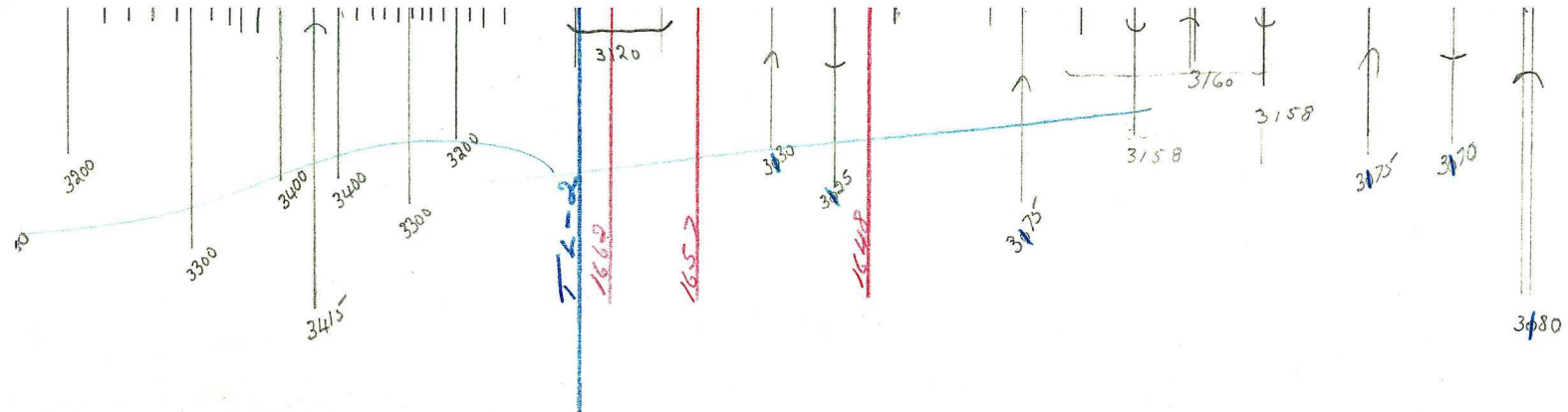


G 3174 MLL

Sept 9/65  
FLT # 11

296-N

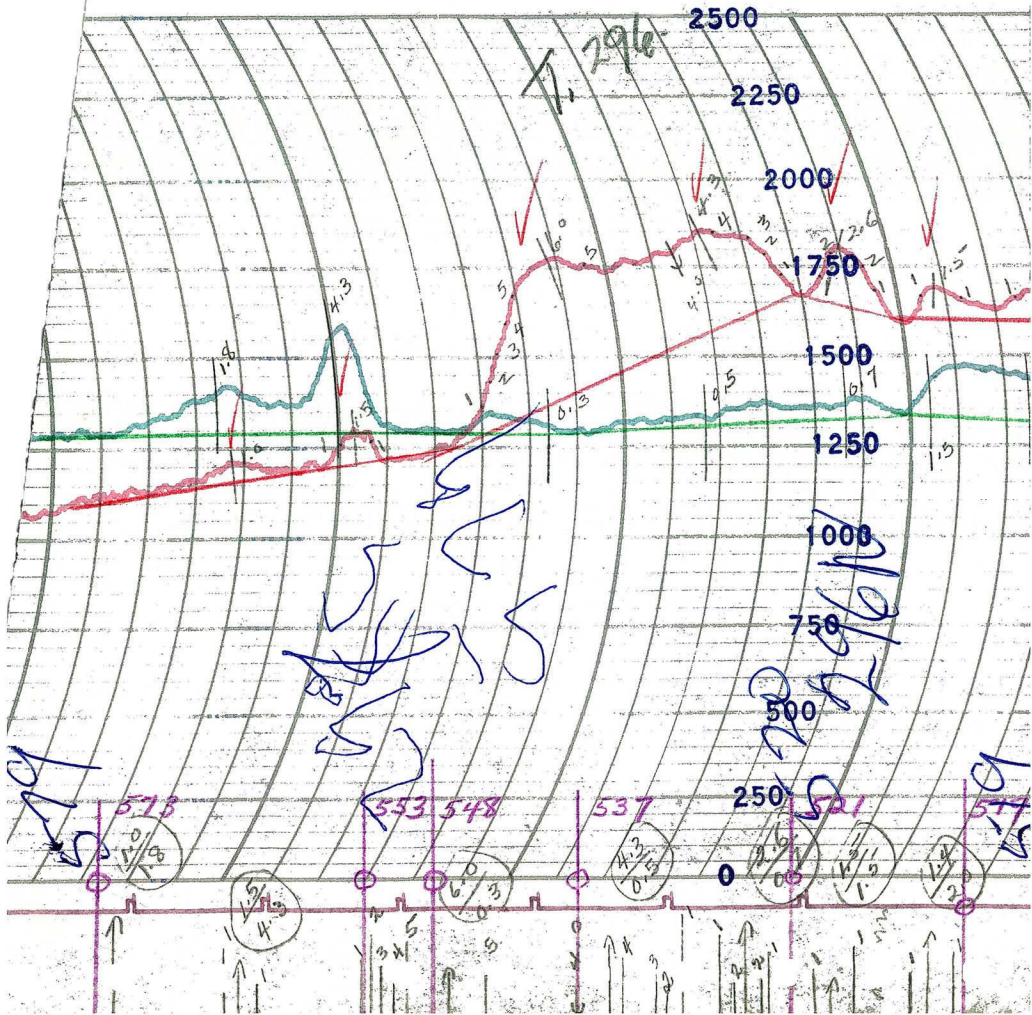
je



G3174  
 FLT-11  
 SEPT 9/65  
 296-N  
 TC

INDIANAPOLIS, IND., U.S.A.

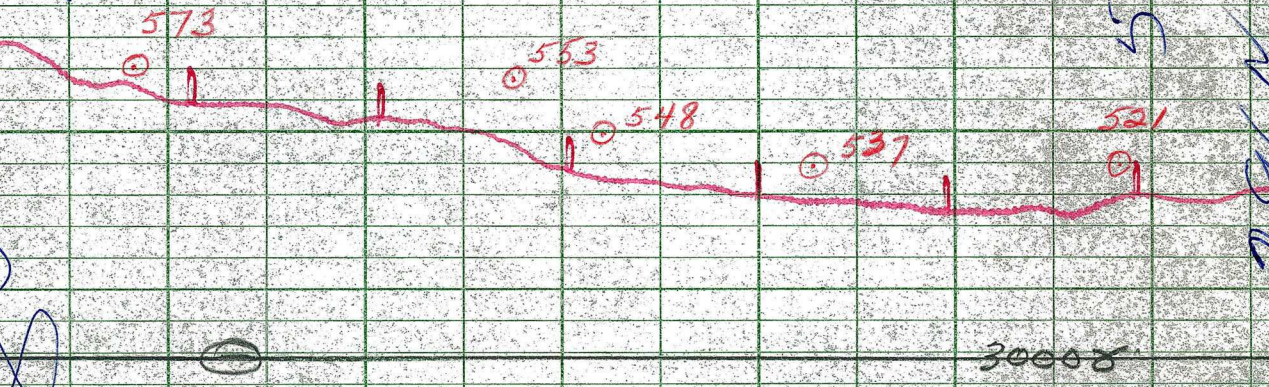
E.S.



*Handwritten notes:*  
Z  
S  
N

*Handwritten:* 579

*Handwritten:* 570



**LOCKWOOD SURVEY CORP., LTD.**

**SULF MK 111 AIRBORNE MAGNETOMETER PROFILE**

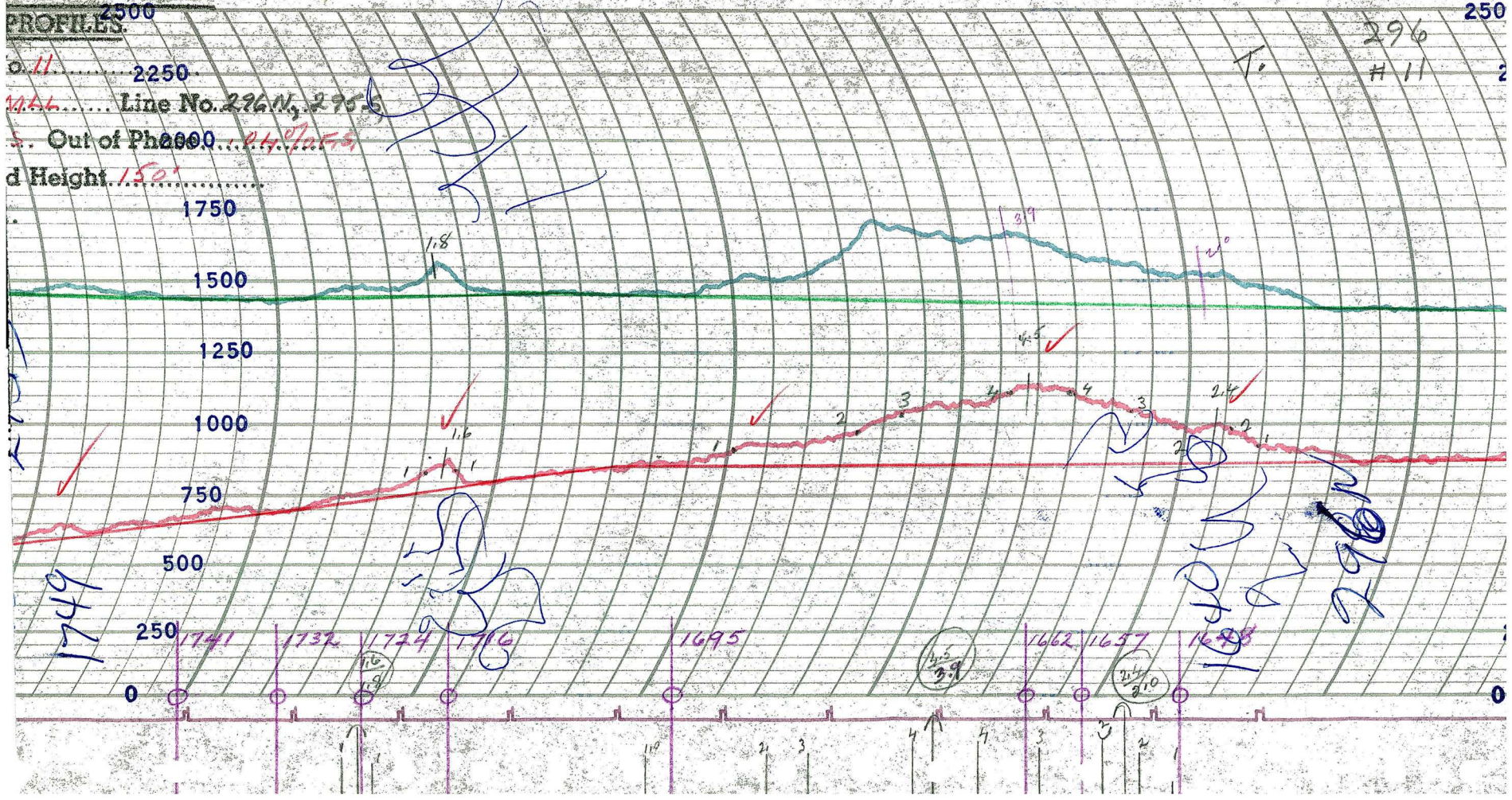
Job No. *31.74* Flight No. *11*  
 Date Flown *SEP 9* Aircraft *M.L.S.* Line No. *296-N*  
 Sensitivity Full Scale *1200γ* Steps *1000γ*  
 Height Flown *200'* Tape Speed *4" PER MIN*

CORP., LTD.

ESTERLINE ANGUS

INDIANAPOLIS, IND., U.S.A.

CHART NO. 43232X



PROFILES

0.11 ..... 2250

Line No. 296A, 295B

Out of Phase ... 0.48/0.55

d Height 150'

296  
# 11

1749

1740  
296A

1741

1732

1724

1716

1695

1662

1657

1648

3.9

2.1

11°

1

2

3

4

5

3

3

2

1

1949

1741

Handwritten notes and scribbles in blue ink on the left side of the grid.

1741

1732

1724

1716

1695

1662

1657

1648

1640

296 N

LOCKWOOD SURVEY CORP., LTD.

GULF MK 111 AIRBORNE MAGNETOMETER PROFILE

Job No. 3.1.7.4 Flight No. 11

Date Flown 5/11/59 Aircraft M.L.L. Line No. 296-N

Sensitivity Full Scale 1200 Steps 1200

Height Flown 200' Tape Speed 4" per min

30007