

LOCKWOOD SURVEY CORPORATION LIMITED

CONTRACT # G-3174
FLIGHT # 15
DATE FLOWN SEPT. 17/65
AIRCRAFT M.L.L.
FLYING HEIGHT 200'

PROFILES
GULF MAGNETOMETER Mk III 4"/MINUTE
SENSITIVITY 1200
APN-1 RADIO ALTIMETER _____/MINUTE
SENSITIVITY _____

LINE No. 297 B-5

017137

LOCKWOOD SURVEY CORP., LTD.
ELECTROMAGNETOMETER PROFILES.

Job No..... Flight No.....
Date Flown..... Aircraft..... Line No.....
Sensitivity In Phase..... Cut of Phase.....
Flying Height..... Bird Height.....
Tape Speed.....

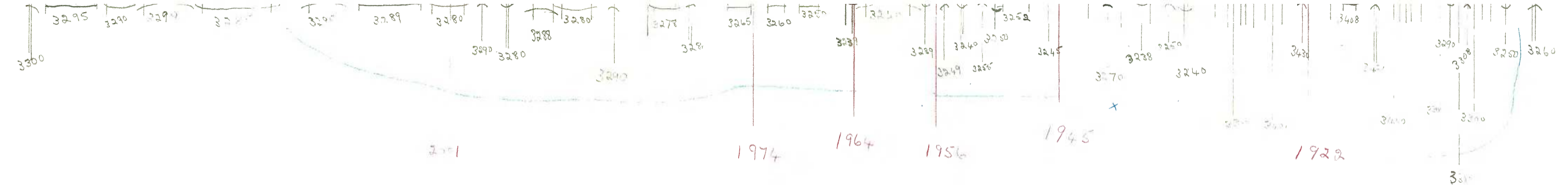
G-3174

F. 15

SEIT 17/10

L 297 P. 5

NC



G-3174

F. 15

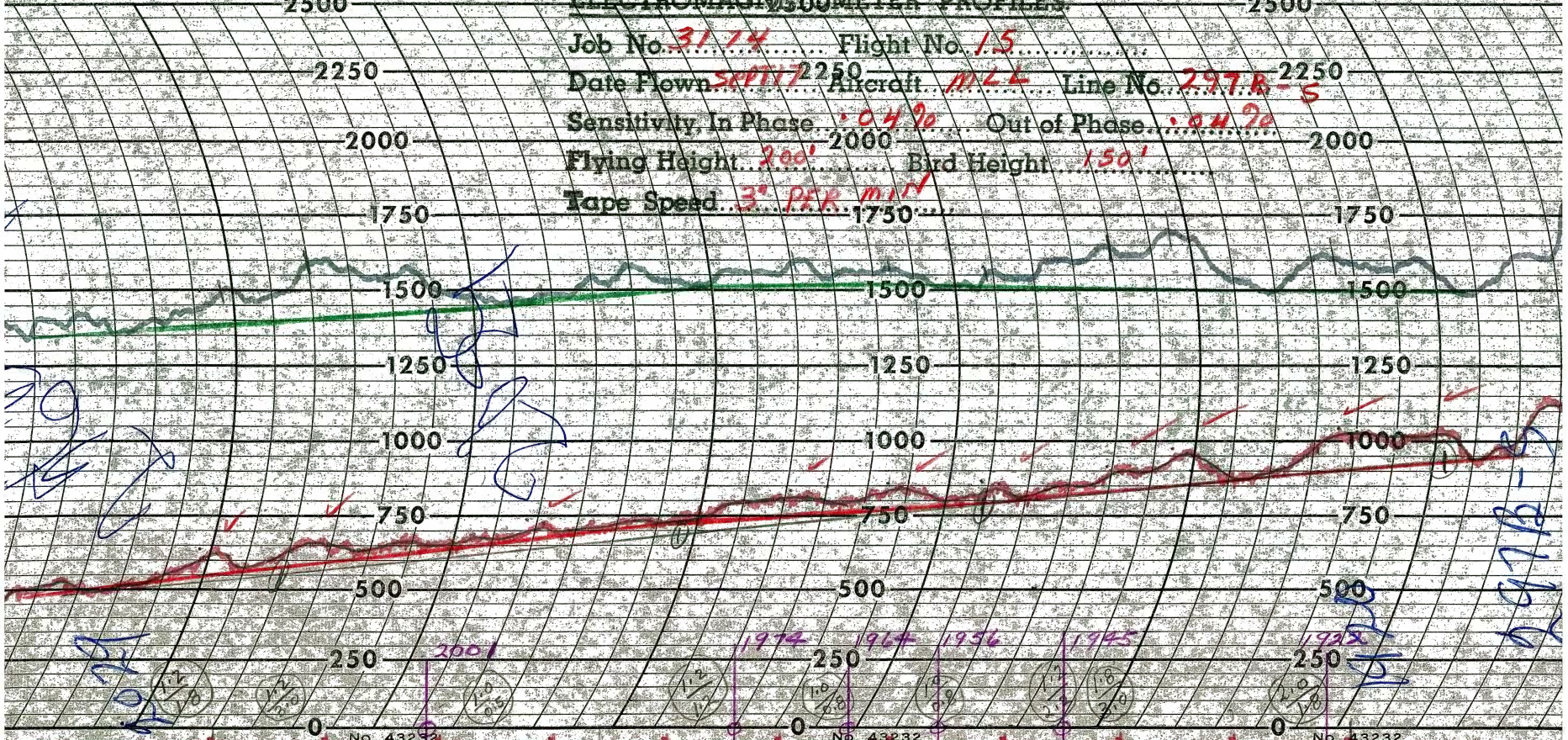
SEIT 17/10

L 297 P. 5

LOCKWOOD SURVEY CORP., LTD.

MADE IN CANADA BY MAITLAND CHARTS LTD. ELECTROMAGNETIC METER PROFILES. MADE IN CANADA BY MAITLAND CHARTS LTD.

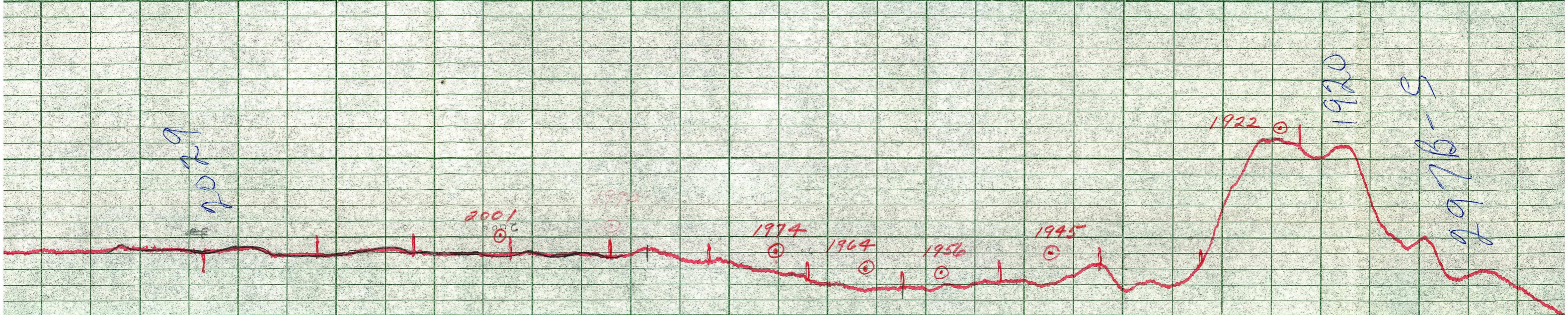
Job No. 3174 Flight No. 15
Date Flown SEPT 17 1950 Aircraft M44 Line No. 297R-S
Sensitivity, In Phase .04% Out of Phase .04%
Flying Height 200' Bird Height 150'
Tape Speed 3" PER MIN



No. 43232

No. 43232

No. 43232



LOCKWOOD SURVEY CORP., LTD.
 GULF MK 111 AIRBORNE MAGNETOMETER PROFILE
 Job No. J-3174... Flight No. 15...
 Date Flown ERT 17/65 Aircraft MLL... Line No. 297 R/S
 Sensitivity Full Scale 1200 γ... Steps 1000 γ...
 Height Flown 2000 ft... Tape Speed 1.5" PM

2029
 profile
 17/65

9976-S
 17/65