

LOCKWOOD SURVEY CORPORATION LIMITED

CONTRACT # 6-3174
FLIGHT # 15
DATE FLOWN Sept 14/65
AIRCRAFT M-L-L
FLYING HEIGHT 200'

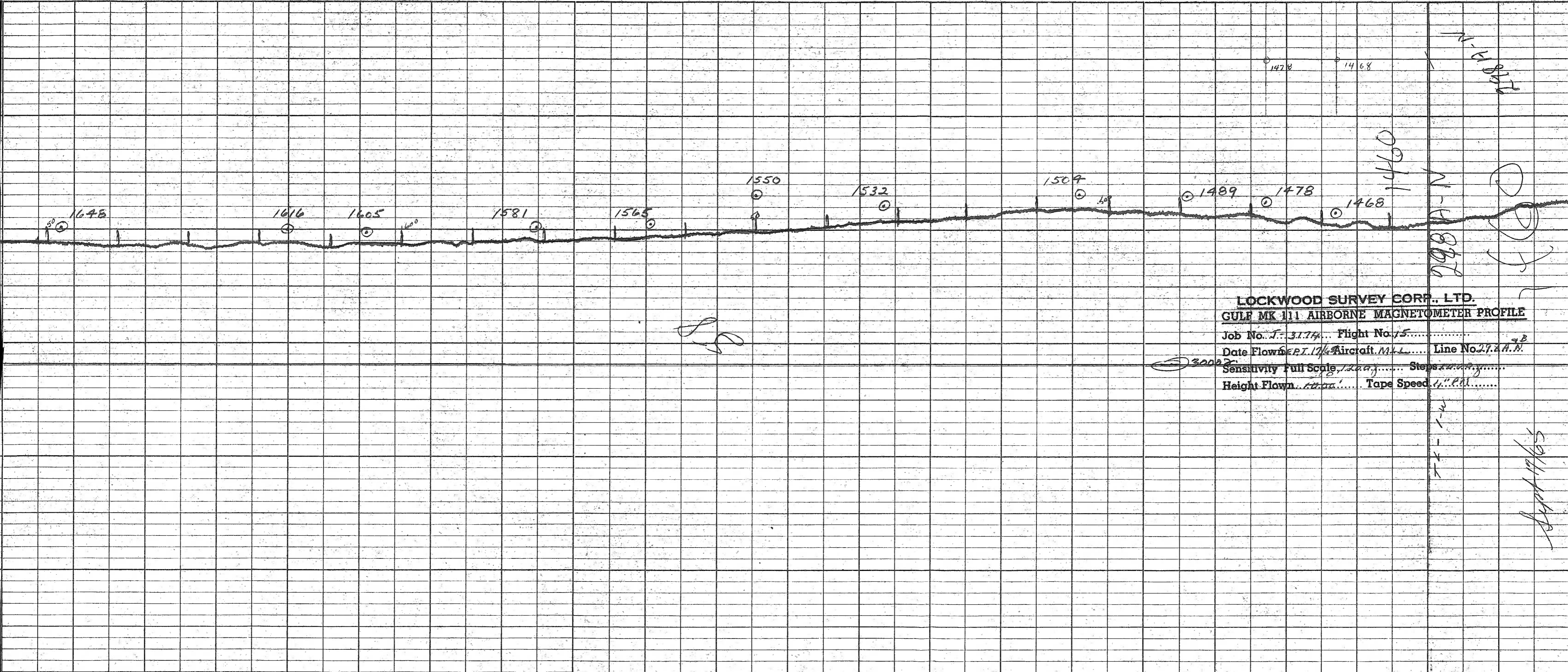
PROFILES CHART SPEED
GULF MAGNETOMETER Mk III 4" P/MINUTE
SENSITIVITY 1200 8
APN-1 RADIO ALTIMETER...../MINUTE
SENSITIVITY.....

LINE No. 298-A-B-10

017139

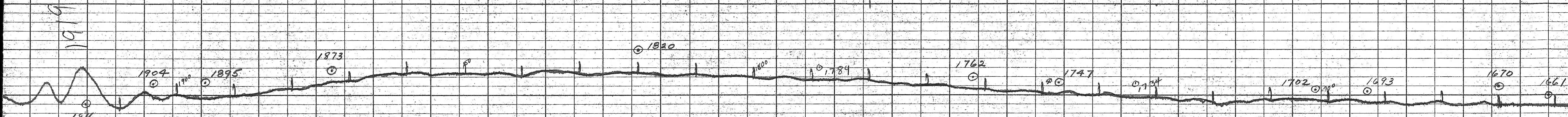
LOCKWOOD SURVEY CORP., LTD.
ELECTROMAGNETOMETER 1 PROFILES.

Job No..... Flight No.....
Date Flown..... Aircraft..... Line No.....
Sensitivity, In Phase..... Out of Phase.....
Flying Height..... Bird Height.....
Tape Speed.....



LOCKWOOD SURVEY CORP., LTD.
GULF MK III AIRBORNE MAGNETOMETER PROFILE
 Job No. *J-3174*... Flight No. *15*.....
 Date Flown *SEPT. 17/64* Aircraft *M-4*..... Line No. *29.2A.N.*^{9B}
 Sensitivity Full Scale *1200*..... Steps *1000*.....
 Height Flown *10000*..... Tape Speed *1000*.....

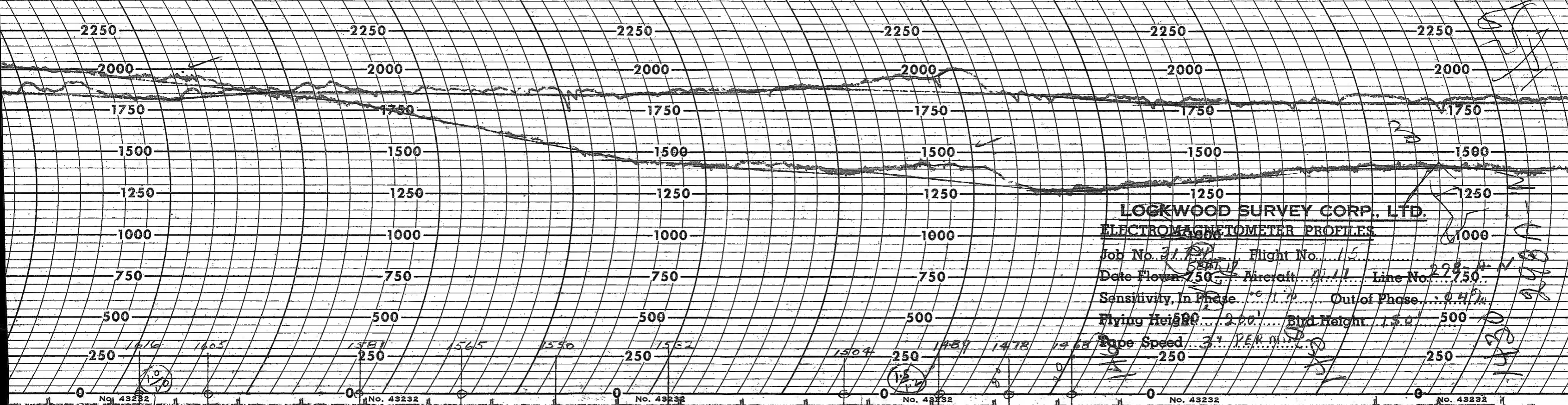
Sept 17/65



LOCKWOOD SURVEY CORP., LTD.
GULF MK 111 AIRBORNE MAGNETOMETER PROFILE
 Job No. J-3174 Flight No. 15
 Date Flown SEPT. 17/46 Aircraft M.H. Line No. 298A-N
 Sensitivity Full Scale 1200 γ Steps 1000 γ
 Height Flown 1000 γ Tape Speed 1/2" PM

3000 γ

1919
 1916
 1904
 1895
 1873
 1820
 1800
 1789
 1762
 1747
 1734
 1702
 1693
 1670
 1661

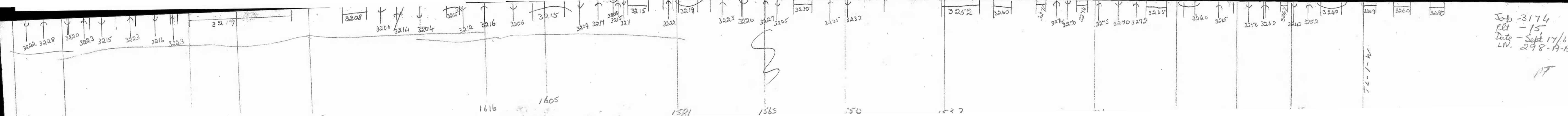


LOGWOOD SURVEY CORP., LTD.

ELECTROMAGNETOMETER PROFILES

Job No. 31.10 Flight No. 15
 Date Flown 7.50 Aircraft 11.11 Line No. 298-A-N
 Sensitivity, In Phase 0.17 Out of Phase 0.47
 Flying Height 500 Bird Height 150
 Tape Speed 3.1 PER MIN.

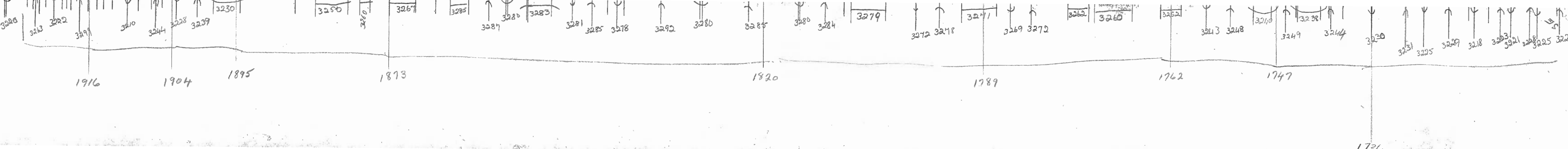
Handwritten notes and scribbles on the right margin, including a large 'S' and other illegible markings.

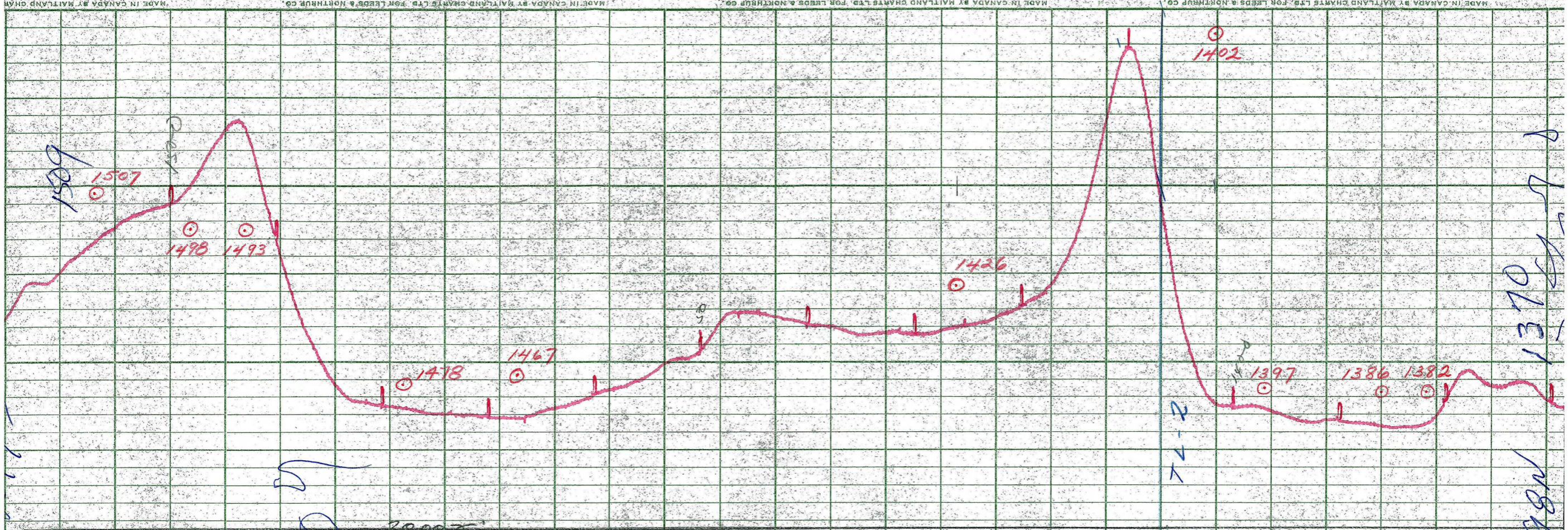


Job - 3174
 Flt - 15
 Date - Sept 17/65
 LN. 298-A-B-1

17

Job - G-3174
Flt - 15
Date - Sept 17/65
LN - 298-A-B-N





3000
 LOCKWOOD SURVEY CORP., LTD.
 GULF M. 111 AIRBORNE MAGNETOMETER PROFILE
 Job No. 3124 Flight No. 11
 Date Flown Sept. 9 Aircraft M.L.F. Line No. 298W
 Sensitivity Full Scale 1200 Steps 1000
 Height Flown 200 Tape Speed 40

298W
 1370

298W
 1370