

LOCKWOOD SURVEY CORPORATION LIMITED

CONTRACT # G-3174
FLIGHT # 11415
DATE FLOWN Sept 9/65
Sept 17/65
AIRCRAFT MLL
FLYING HEIGHT 200'

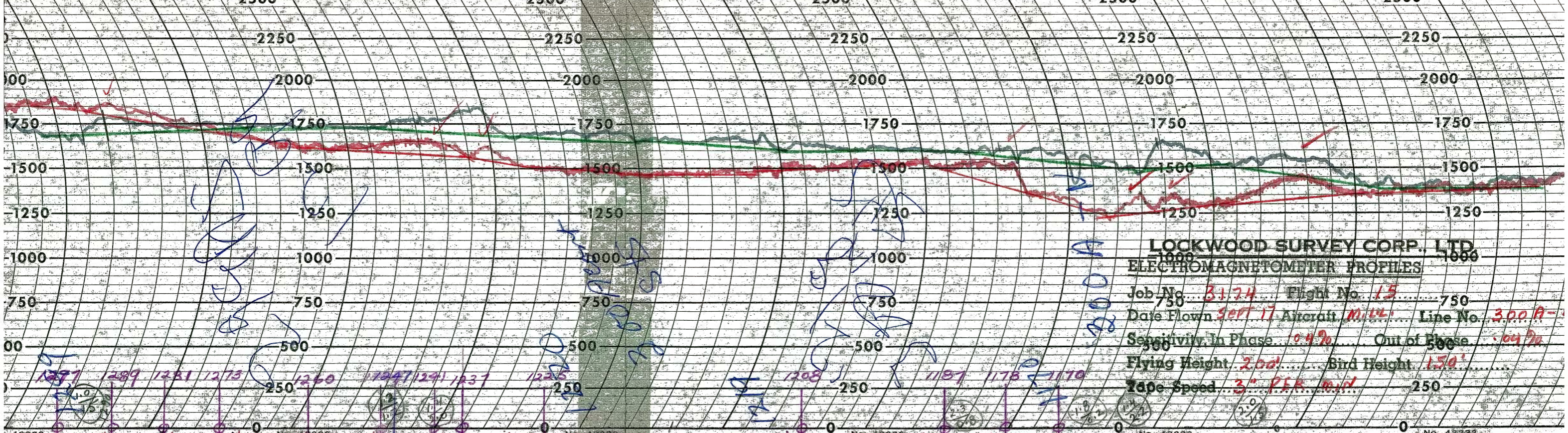
PROFILES
GULF MAGNETOMETER Mk III 4"/MINUTE
SENSITIVITY 1200
APN-1 RADIO ALTIMETER /MINUTE
SENSITIVITY

300 AN
LINE No. 300-N

017141

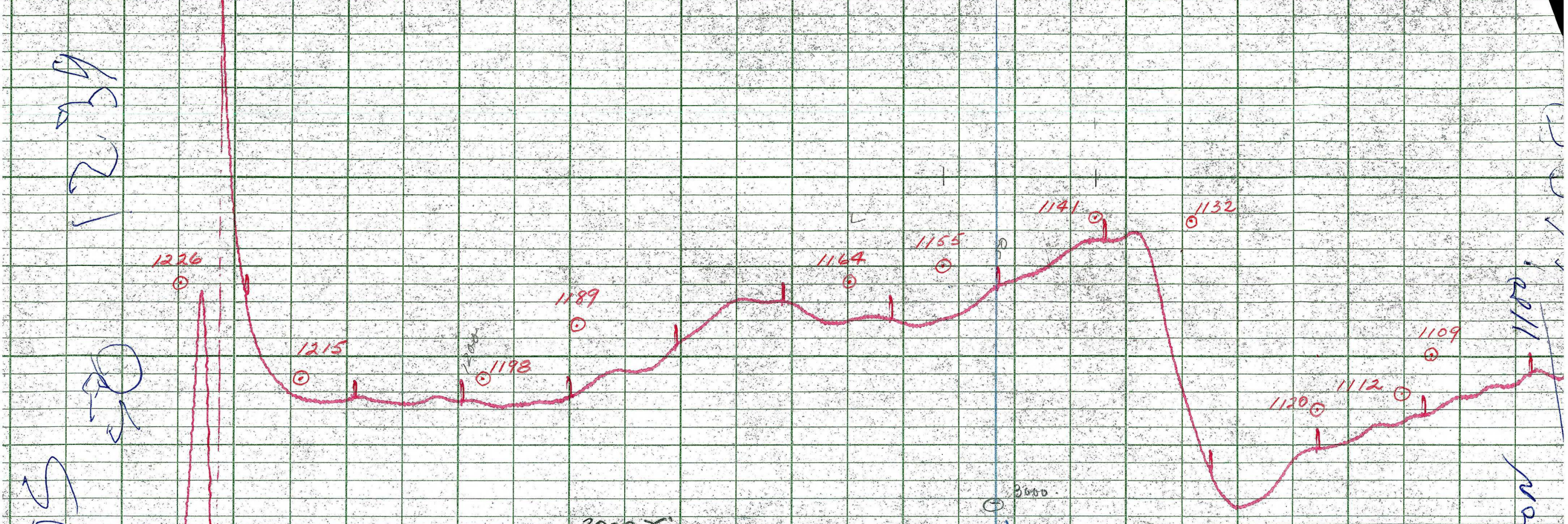
LOCKWOOD SURVEY CORP., LTD.
ELECTROMAGNETOMETER PROFILES.

Job No..... Flight No.....
Date Flown..... Aircraft..... Line No.....
Sensitivity, In Phase..... Out of Phase.....
Flying Height..... Bird Height.....
Tape Speed.....



LOCKWOOD SURVEY CORP., LTD.
ELECTROMAGNETOMETER PROFILES

Job No. *3174* Flight No. *15*
 Date Flown *Sept. 17* Aircraft *M. 44* Line No. *300 A-*
 Sensitivity In Phase *0.4%* Out of Phase *0.04%*
 Flying Height *200'* Bird Height *150'*
 T80c Speed *3" P.F.R. M.D.*



LOCKWOOD SURVEY CORP., LTD.
GULF MK II AIRBORNE MAGNETOMETER PROFILE
 Job No. 3174 Flight No. 11
 Date Flown 2/17/79 Aircraft M-44 Line No. 300..N
 Sensitivity Full Scale 1200γ Steps 1000γ
 Height Above Ground 200' Tape Speed 4" PER MIN

