

LOCKWOOD SURVEY CORPORATION LIMITED

CONTRACT # G 3174
FLIGHT # 11
DATE FLOWN Sept 9-65
AIRCRAFT M.L.L.
FLYING HEIGHT 200'

PROFILES 2
GULF MAGNETOMETER Mk III 4 /MINUTE
SENSITIVITY 1200
APN-1 RADIO ALTIMETER _____ /MINUTE
SENSITIVITY _____

LINE No. 305 S
305 B.
SEPT 17/65 305 A-FLT 15.
017147

LOCKWOOD SURVEY CORP., LTD.
ELECTROMAGNETOMETER PROFILES.

Job No..... Flight No.....
Date Flown..... Direction..... Line No.....
Sensitivity, In Phase..... Out of Phase.....
Flying Height..... Eird Height.....
Tape Speed.....

2379

2375

2363

2341

2324

2306

2296

2273

2279

3055

3000

3000

2-10

LOCKWOOD SURVEY CORP., LTD.
GULF MK-1F AIRBORNE MAGNETOMETER PROFILE

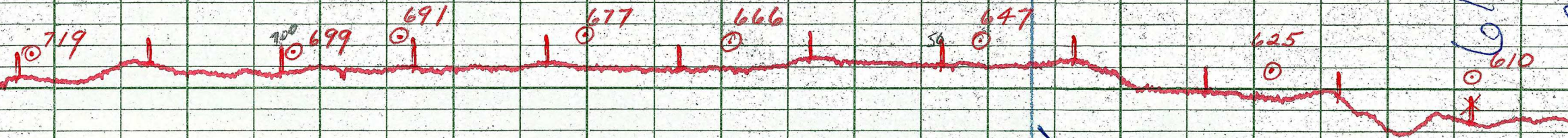
Job No. 3174 Flight No. 11
Date Flown 5/17/59 Aircraft M.K.L. Line No. 305-18
Sensitivity Full Scale 1200γ Steps 10.00γ
Height Flown 200' Tape Speed 4" PER MIN

Handwritten scribbles and a large vertical scribble on the left side of the page.



DC
119
626

305A-8



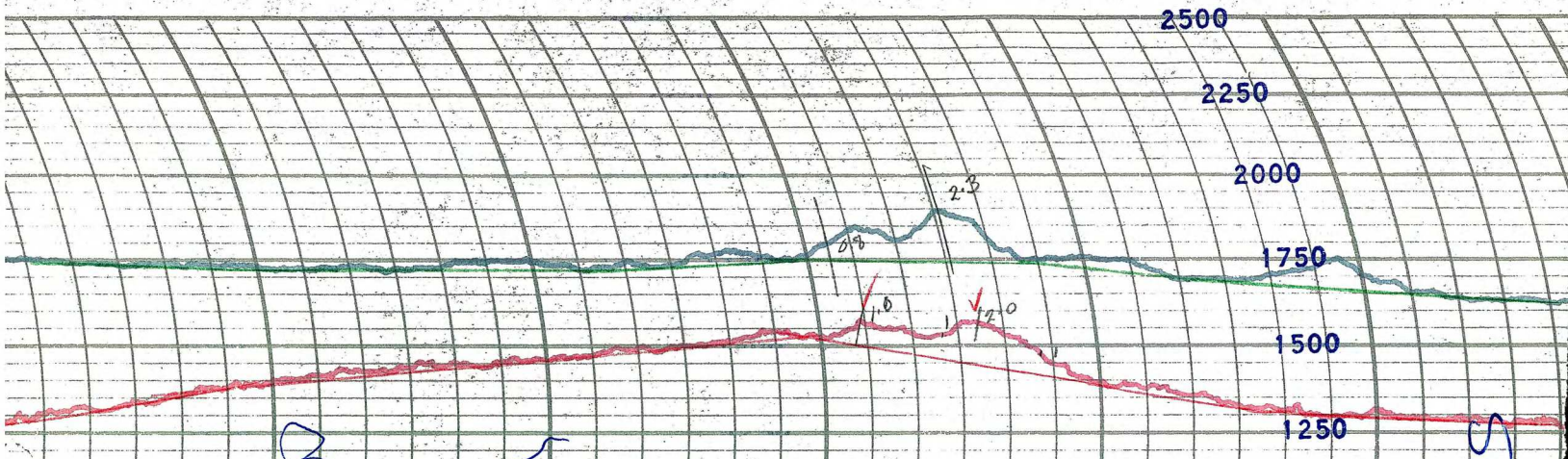
Handwritten blue annotations on the left side of the grid, including several large, stylized characters and arrows pointing in various directions.

Handwritten blue scribbles.

LOCKWOOD SURVEY CORP., LTD.
GULF MK 111 AIRBORNE MAGNETOMETER PROFILE

3000
 Job No. F-3174 Flight No. 15
 Date Flown SEPT. 17/65 Aircraft M.44 Line No. 305A-N
 Sensitivity Full Scale 1.200γ Steps 10.00γ
 Height Flown 200' Tape Speed 4" P.M.

3000



LOCKWOOD SURVEY CORP., LTD.
ELECTROMAGNETOMETER PROFILES.

Job No. J-3174..... Flight No. 11..... 750
 Date Flown SEP. 9/65 Aircraft. M.44..... Line No. 305-5
 Sensitivity, In Phase..... Out of Phase. 500
 Flying Height. 200'..... Bird Height. 150'
 Tape Speed. 3 1/2 P.M...... 2306 2296 250 2273

2374

[Handwritten blue scribble]

2270 2055

2375 2363 2347 2306 2296 2273

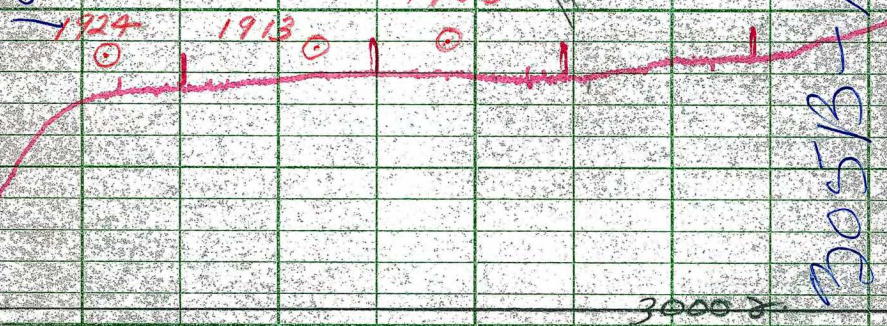
1 1/4

2 2/3

2300

AC
10
1

6261



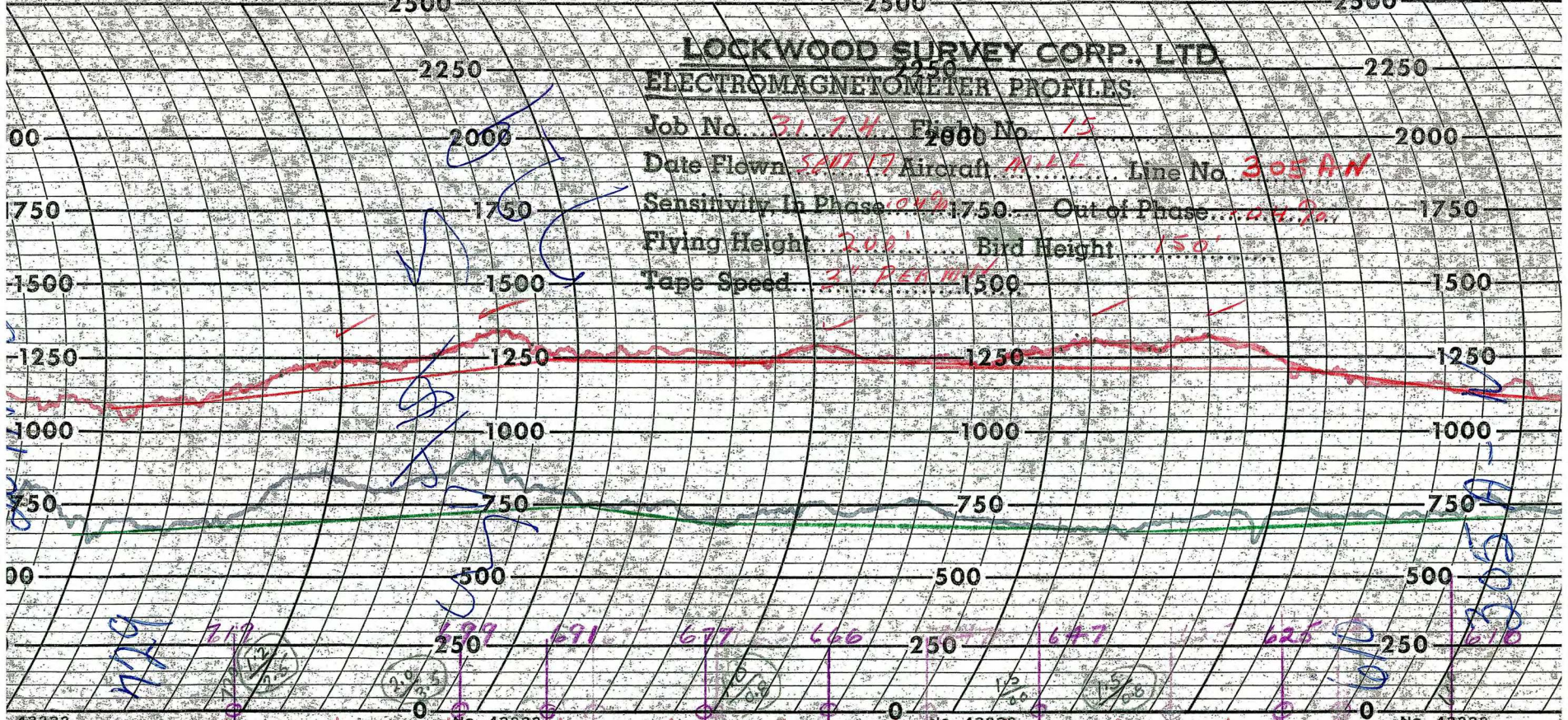
LOCKWOOD SURVEY CORP., LTD.

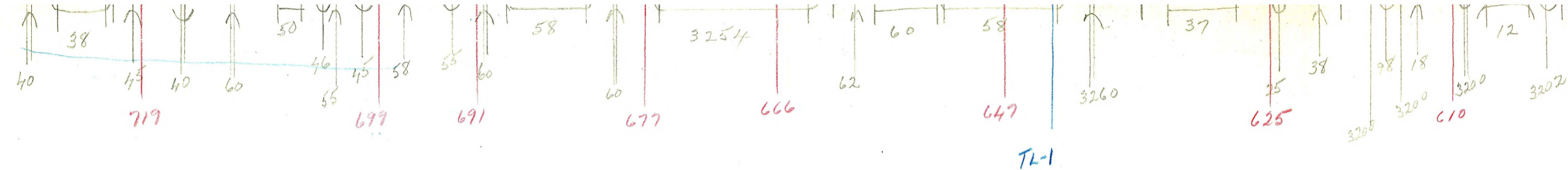
3174
 Sept 9. FLIGHT-11-
 Altitude: 1000
 Line No.:
 Sensitivity Full Scale: 1200 Steps: 100
 Height Flown: 200 Tape Speed: +

LOCKWOOD
 SURVEY
 CORP.

LOCKWOOD SURVEY CORP., LTD. ELECTROMAGNETOMETER PROFILES

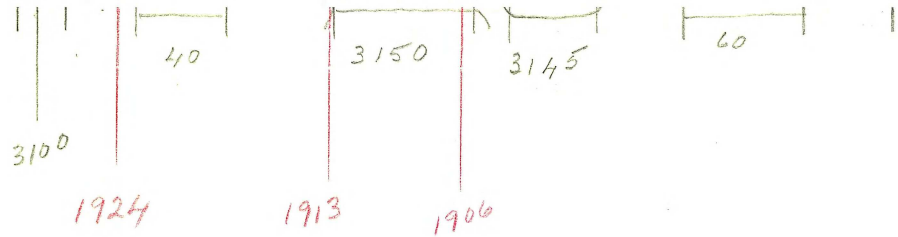
Job No. 31-74 Flight No. 15
 Date Flown 5/11/77 Aircraft M-11 Line No. 305 AN
 Sensitivity In Phase 0.4% Out of Phase 0.4%
 Flying Height 200' Bird Height 150'
 Tape Speed 2' PER MIN





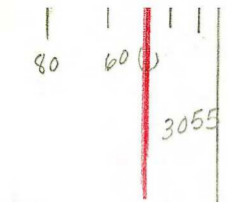
G-3174
 T-305A-N
 SEPT 17/65
 FLT 15

J.B.

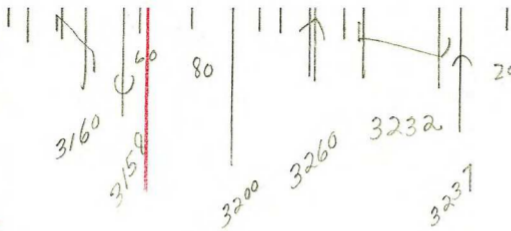


G-3194
T-305-B
SEPT 9/65
FLT 11

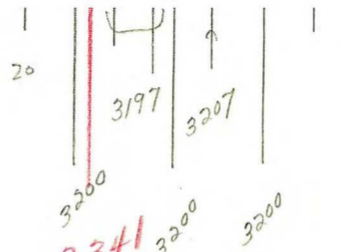
JB.



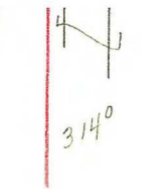
2375
3100



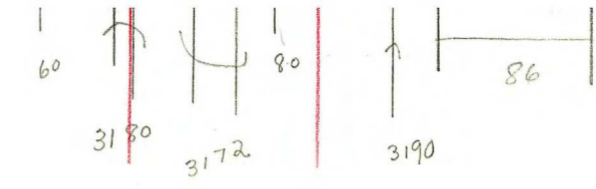
2363



2341

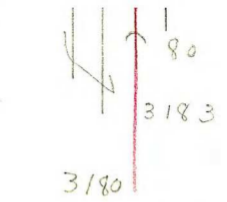


2324



2306

2296



2273

G 3174
Sept 9-65
T 305 S
Inter Em