

**LOCKWOOD SURVEY CORPORATION LIMITED**

CONTRACT # G-3174  
FLIGHT # Nº 11  
DATE FLOWN Sept 9/65  
AIRCRAFT Sm L4  
FLYING HEIGHT 200 ft

PROFILES  
GULF MAGNETOMETER Mk III 4 /MINUTE  
SENSITIVITY 1200 ft.  
APN-1 RADIO ALTIMETER...../MINUTE  
SENSITIVITY.....

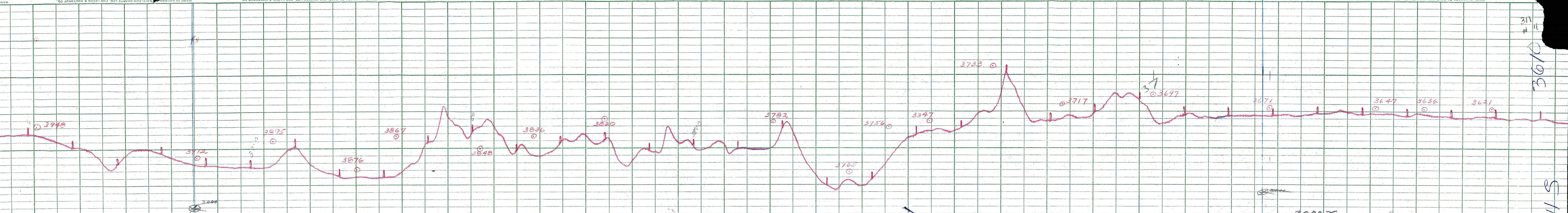
CHART SPEED

LINE No. 311-S

017154

**LOCKWOOD SURVEY CORP., LTD.**  
**ELECTROMAGNETOMETER PROFILES.**

Job No..... Flight No.....  
Date Flown..... Aircraft..... Line No.....  
Sensitivity, In Phase..... Out of Phase.....  
Flying Height..... Bird Height.....  
Tape Speed.....



LOCKWOOD SURVEY CORP., LTD.  
 GULF MK 111 AIRBORNE MAGNETOMETER PROFILE  
 Job No. 3134 Flight No. 11  
 Date Flown SEPT. 9 Aircraft MILL Line No. 311  
 Sensitivity Full Scale 12.5 G Steps 100 G  
 Height Flown 2000 Tape Speed 4" PER MIN

311  
 # 11  
 3610  
 S 112

4057

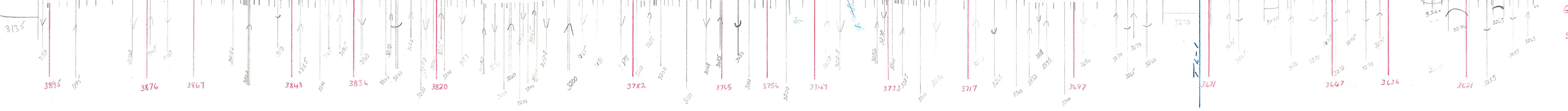


**LOCKWOOD SURVEY CORP., LTD.**

**GULF MK 111 AIRBORNE MAGNETOMETER PROFILE**

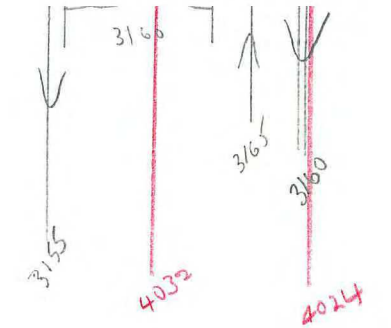
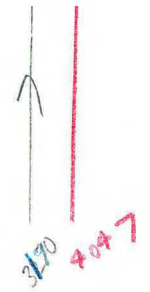
Job No. 3174 Flight No. 11  
 Date Flown Sept. 9 Aircraft. M.46 Line No. 311-S  
 Sensitivity Full Scale 1200 Steps 1000  
 Height Flown 2000 Tape Speed 2" PER MIN

3000

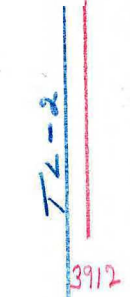
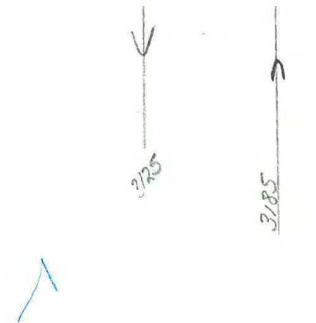
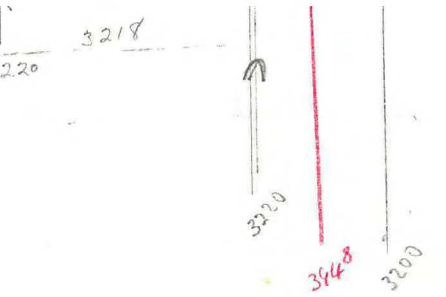
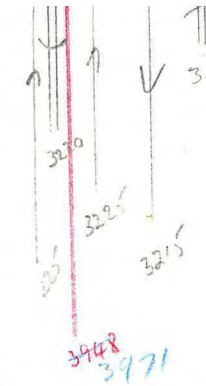
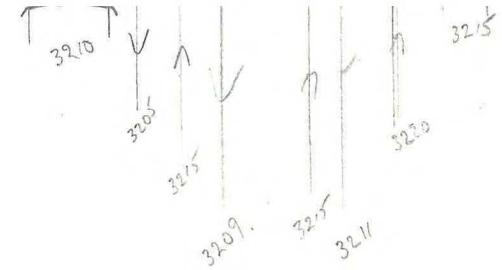


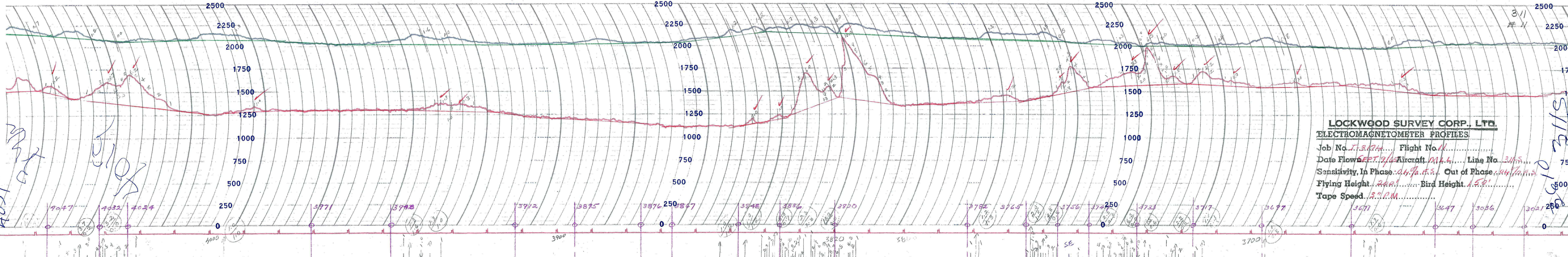
G-3174  
 FLT-11  
 SEPT 9/65  
 311 S.  
 T.C.

G3174  
FLT-11  
Sept 9/65  
341-S



80 3200





*H059*  
*311*

*311*  
*311*  
*5115*  
*0105*  
*105*