

**LOCKWOOD SURVEY CORPORATION LIMITED**

CONTRACT # G-3174  
FLIGHT # 11  
DATE FLOWN SEPT 9/65  
AIRCRAFT MLL  
FLYING HEIGHT 200'

PROFILES CHART SPEED  
GULF MAGNETOMETER Mk III 4"/MINUTE  
SENSITIVITY 1200g  
APN-1 RADIO ALTIMETER...../MINUTE  
SENSITIVITY.....

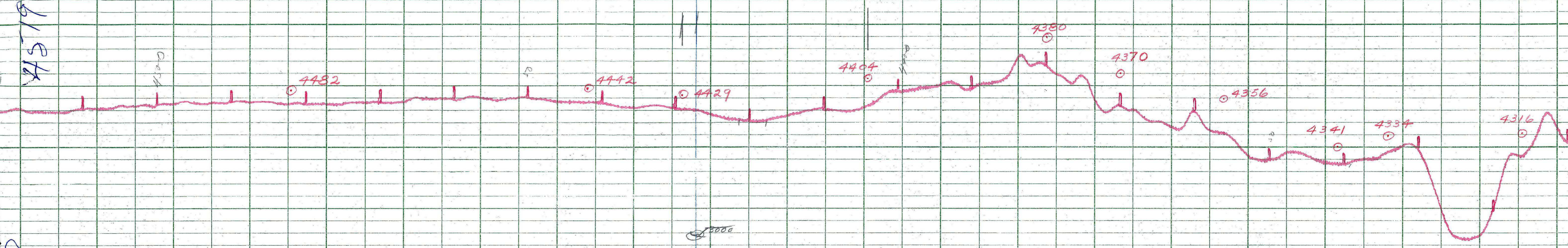
LINE No. 312-N

017155

**LOCKWOOD SURVEY CORP., LTD.**  
**ELECTROMAGNETOMETER PROFILES.**

Job No..... Flight No.....  
Date Flown..... Aircraft..... Line No.....  
Sensitivity, In Phase..... Out of Phase.....  
Flying Height..... Bird Height.....  
Tape Speed.....

6157A

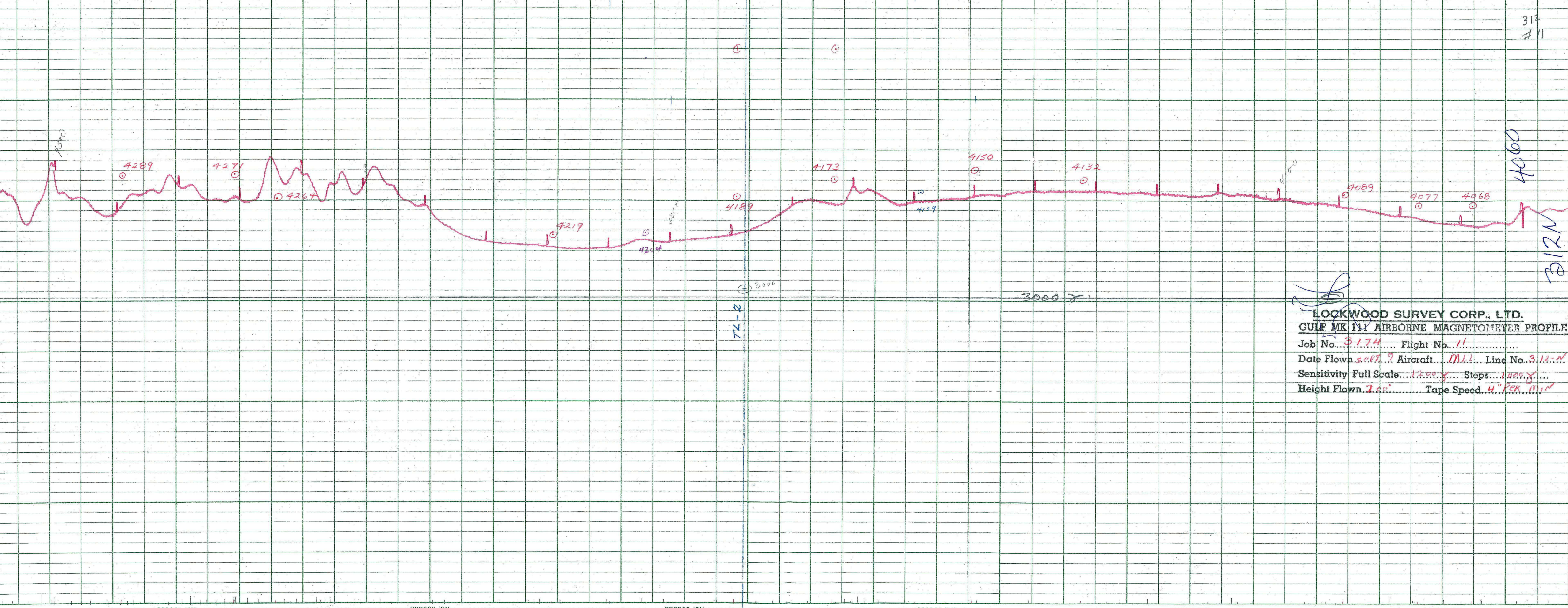


**LOCKWOOD SURVEY CORP., LTD.**

**GULF MK 111 AIRBORNE MAGNETOMETER PROFILE**

Job No. 3174 Flight No. 11  
 Date Flown SEPT. 9 Aircraft M.K.1 Line No. 3.12-IV  
 Sensitivity Full Scale 12000 Steps 10000  
 Height Flown 200' Tape Speed 4" PER MIN

*[Handwritten signature]*

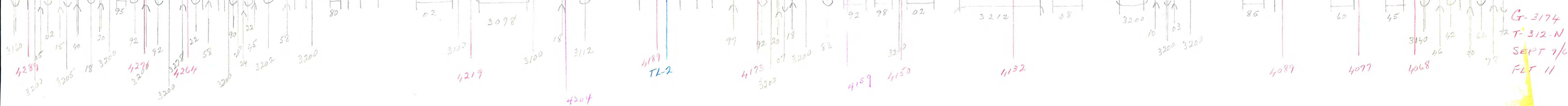


*[Handwritten signature]*

**LOCKWOOD SURVEY CORP., LTD.**  
**GULF MK IV AIRBORNE MAGNETOMETER PROFILE**  
 Job No. 3174 Flight No. 11  
 Date Flown Sept. 9 Aircraft M11 Line No. 312-N  
 Sensitivity Full Scale 1200 Steps 1200  
 Height Flown 700' Tape Speed 4" PER MIN

4060

B12N



G-3174  
 T-312-N  
 SEPT 9/65  
 FLT 11

IB.

G-3174  
T-312-N  
SEPT 9/65  
FLT 11

