

LOCKWOOD SURVEY CORPORATION LIMITED

CONTRACT # 3174
FLIGHT # 11
DATE FLOWN Sept 9-65
AIRCRAFT M.L.L.
FLYING HEIGHT 200'

PROFILES
GULF MAGNETOMETER Mk III 4/MINUTE
SENSITIVITY 1200
APN-1 RADIO ALTIMETER /MINUTE
SENSITIVITY

LINE No. 313 S

017156

LOCKWOOD SURVEY CORP., LTD.
ELECTROMAGNETOMETER PROFILES.

Job No..... Flight No.....
Date Flown..... Aircraft..... Line No.....
Sensitivity, In Phase..... Out of Phase.....
Flying Height..... Bird Height.....
Tape Speed.....

686H

4977

4958

4944

4912

1704

4876

4867

4832

4810

4800

4788

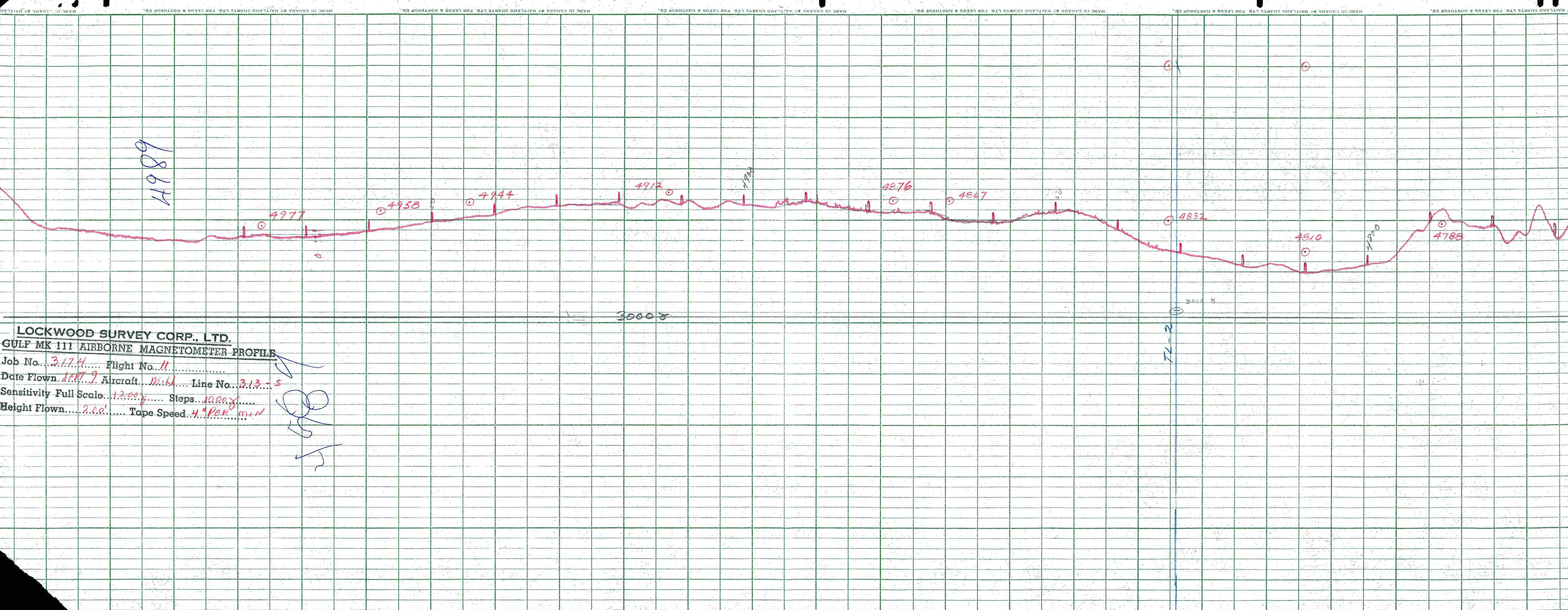
3000

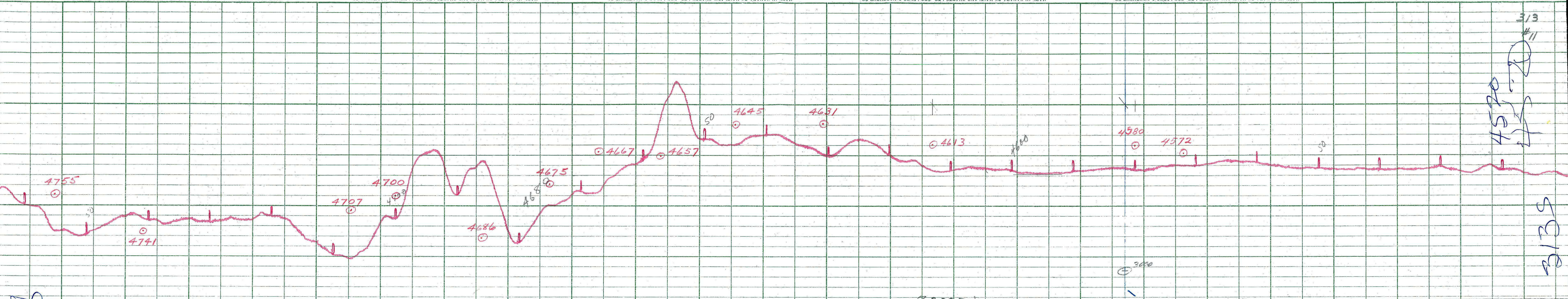
TL-2

3000

LOCKWOOD SURVEY CORP., LTD.
GULF MK 111 AIRBORNE MAGNETOMETER PROFILE
 Job No. 3174 Flight No. 11
 Date Flown 10/17/59 Aircraft M.H.A. Line No. 313-5
 Sensitivity Full Scale 1200 Steps 1000
 Height Flown 2000 Tape Speed 4" PER MIN

Handwritten signature or initials in blue ink.





LOCKWOOD SURVEY CORP., LTD.
GULF MK 111 AIRBORNE MAGNETOMETER PROFILE
 Job No. 3174 Flight No. 11
 Date Flown SEPT. 9 Aircraft M11 Line No. 313-5
 Sensitivity Full Scale 1,200γ Steps 100.0γ
 Height Flown 2,00' Tape Speed 4" PER MIN.

3/3
 4/11
 4570
 4572
 313-5
 313-5

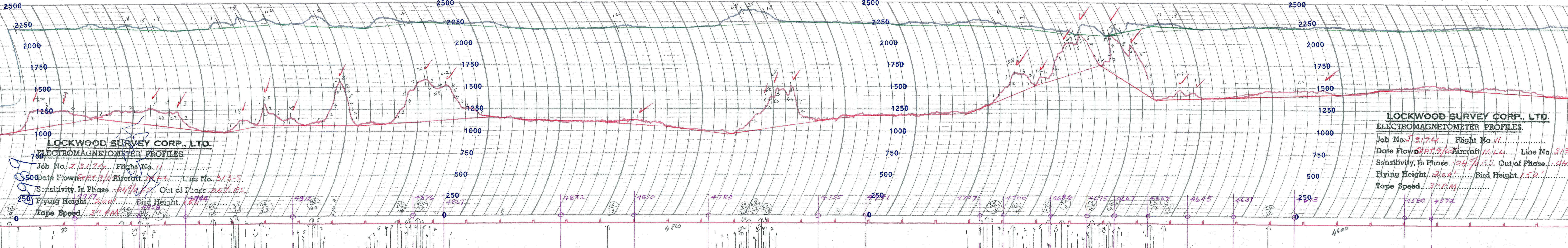
G 3174

Sept 9-65

T 3135

Lower lim.





LOCKWOOD SURVEY CORP., LTD.
ELECTROMAGNETOMETER PROFILES.

Job No. J. 3174 Flight No. 11
 Date Flown SEPT. 9/46 Aircraft M.L.L. Line No. 313-5
 Sensitivity, In Phase .04% F.S. Out of Phase .04% F.S.
 Flying Height 2,000' Bird Height 1,500'
 Tape Speed 3" P.M.

LOCKWOOD SURVEY CORP., LTD.
ELECTROMAGNETOMETER PROFILES.

Job No. J. 3174 Flight No. 11
 Date Flown SEPT. 9/46 Aircraft M.L.L. Line No. 313-5
 Sensitivity, In Phase .04% F.S. Out of Phase .04% F.S.
 Flying Height 2,000' Bird Height 1,500'
 Tape Speed 3" P.M.

313
#11

45-20