

LOCKWOOD SURVEY CORPORATION LIMITED

CONTRACT # G-3174
FLIGHT # 11
DATE FLOWN SEPT 9/65
AIRCRAFT MLL
FLYING HEIGHT 200'

PROFILES
GULF MAGNETOMETER Mk III 4"/MINUTE
SENSITIVITY 1200
APN-1 RADIO ALTIMETER /MINUTE
SENSITIVITY

LINE No. 318-N

017161

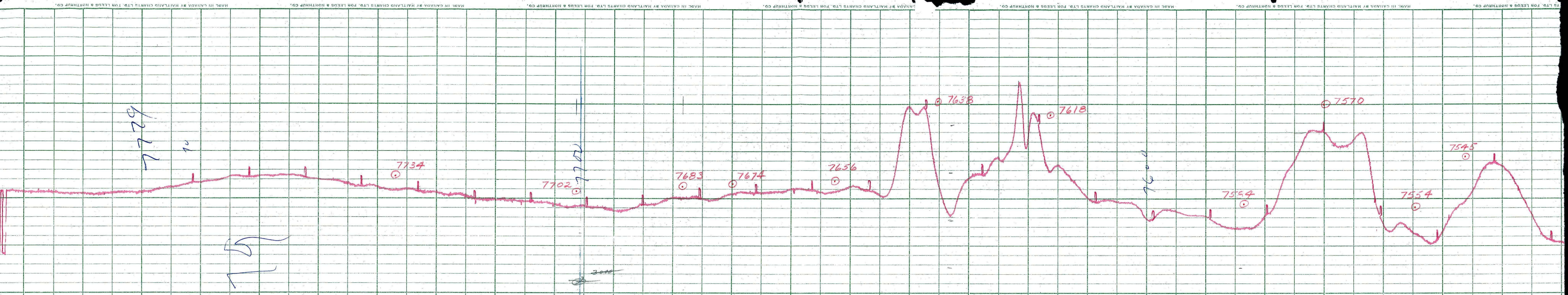
LOCKWOOD SURVEY CORP., LTD.
ELECTROMAGNETOMETER PROFILES.

Job No..... Flight No.....
Date Flown..... Aircraft..... Line No.....
Sensitivity, In Phase..... Out of Phase.....
Flying Height..... Bird Height.....
Tape Speed.....

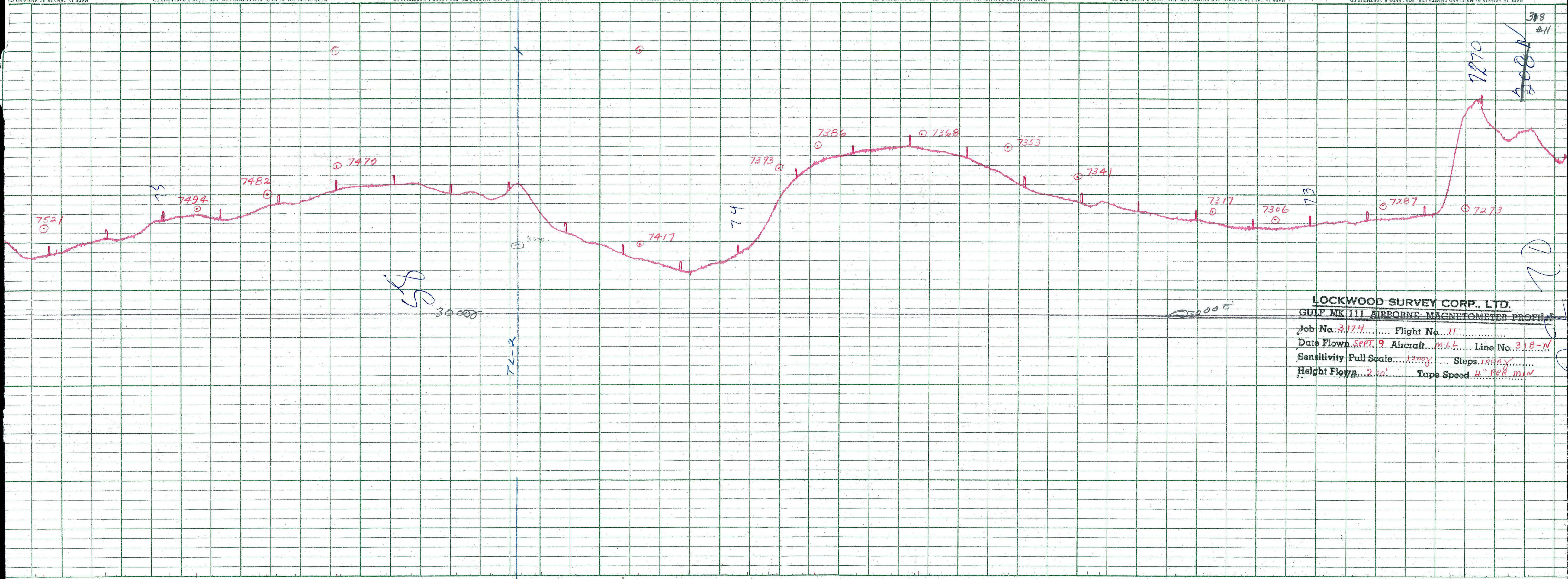
LOCKWOOD SURVEY CORP., LTD.

MILF MK 111 AIRBORNE MAGNETOMETER PROFILE

Job No. J-3174 Flight No. 11
Date Flown SEPT. 9 Aircraft M.44 Line No. 318-N
Sensitivity Full Scale 12,000 Steps 1000
Height Flown 200' Tape Speed 3" PER MIN



3000 0



SS

30,000

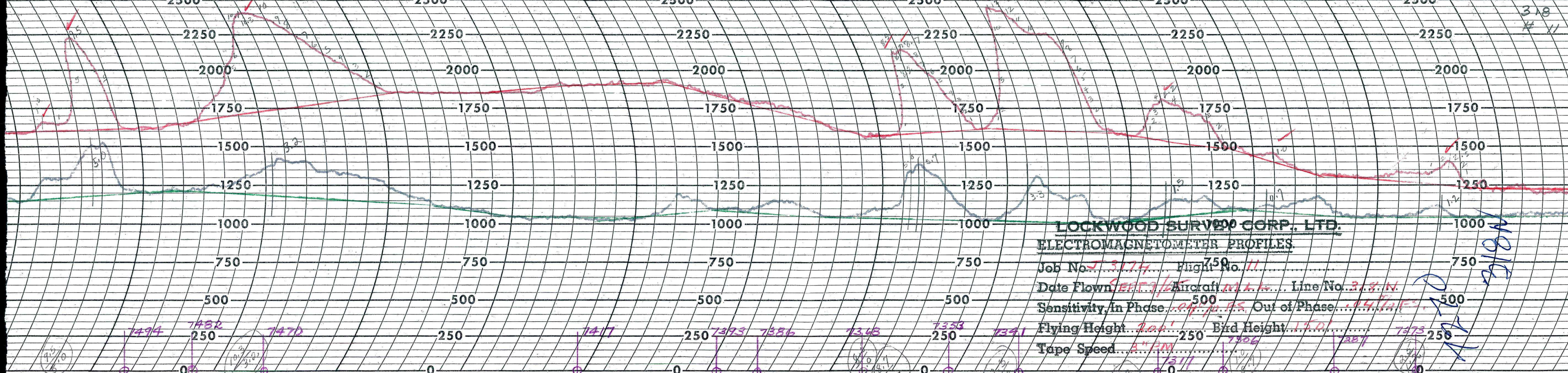
TK-R

30,000

LOCKWOOD SURVEY CORP., LTD.
GULF MK III AIRBORNE MAGNETOMETER PROFILE
 Job No. 3174 Flight No. 11
 Date Flown SEPT. 9. Aircraft MLL Line No. 318-N
 Sensitivity Full Scale 1200γ Steps 100γ
 Height Flown 200' Tape Speed 4" PER MIN

318
#11
2000

12



LOCKWOOD SURVEYING CORP., LTD.
ELECTROMAGNETOMETER PROFILES

Job No. J. 3174 Flight No. 11
 Date Flown SEPT 3/65 Aircraft M.A.H. Line No. 318 N
 Sensitivity, In Phase 0.17 Out of Phase 0.04
 Flying Height 200' Bird Height 150'
 Tape Speed 2" / 3M

NOTE
 318
 # 11



