

LOCKWOOD SURVEY CORPORATION LIMITED

CONTRACT # 3174

PROFILES

CHART SPEED

LINE No. 320 N

FLIGHT # 12

GULF MAGNETOMETER Mk III 4 /MINUTE

DATE FLOWN Sept 11-65

SENSITIVITY 1200

AIRCRAFT M26

APN-1 RADIO ALTIMETER /MINUTE

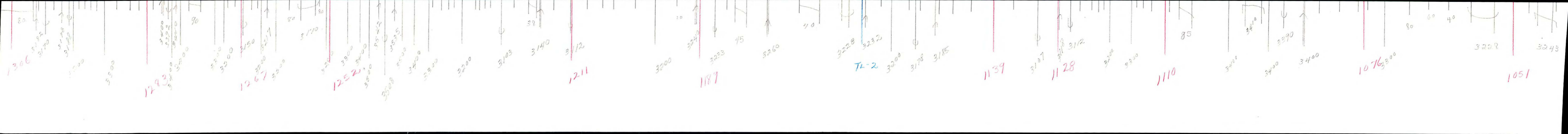
FLYING HEIGHT 200'

SENSITIVITY

017163

LOCKWOOD SURVEY CORP., LTD.
ELECTROMAGNETOMETER PROFILES.

Job No..... Flight No.....
Date Flown..... Aircraft..... Line No.....
Sensitivity, In Phase..... Out of Phase.....
Flying Height..... Bird Height.....
Tape Speed.....



3200

3183

1028

3200

3218

3210

1004³³⁰⁰

3362

3322

3380

G 3174
Sept 11-65

7320 N

Inter Em

320

1519

1510

1511

1447

1416

1367

1326

1306

1283

1267

1252

LOCKWOOD SURVEY CORP., LTD.
GULF MK 111 AIRBORNE MAGNETOMETER PROFILE

Job No. J-3124 Flight No. 12

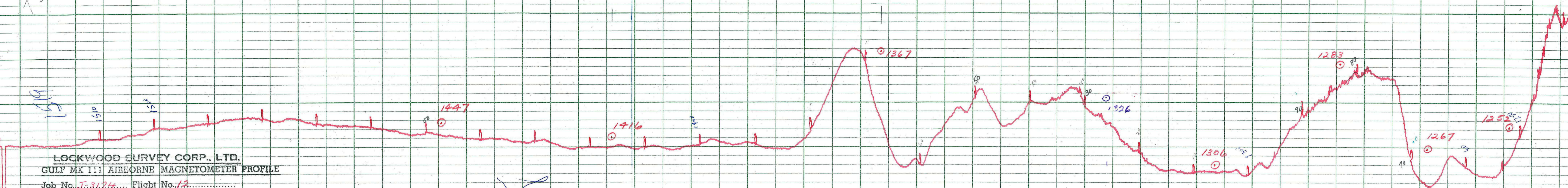
Date Flown SEP 11/55 Aircraft MLL Line No. 320-N

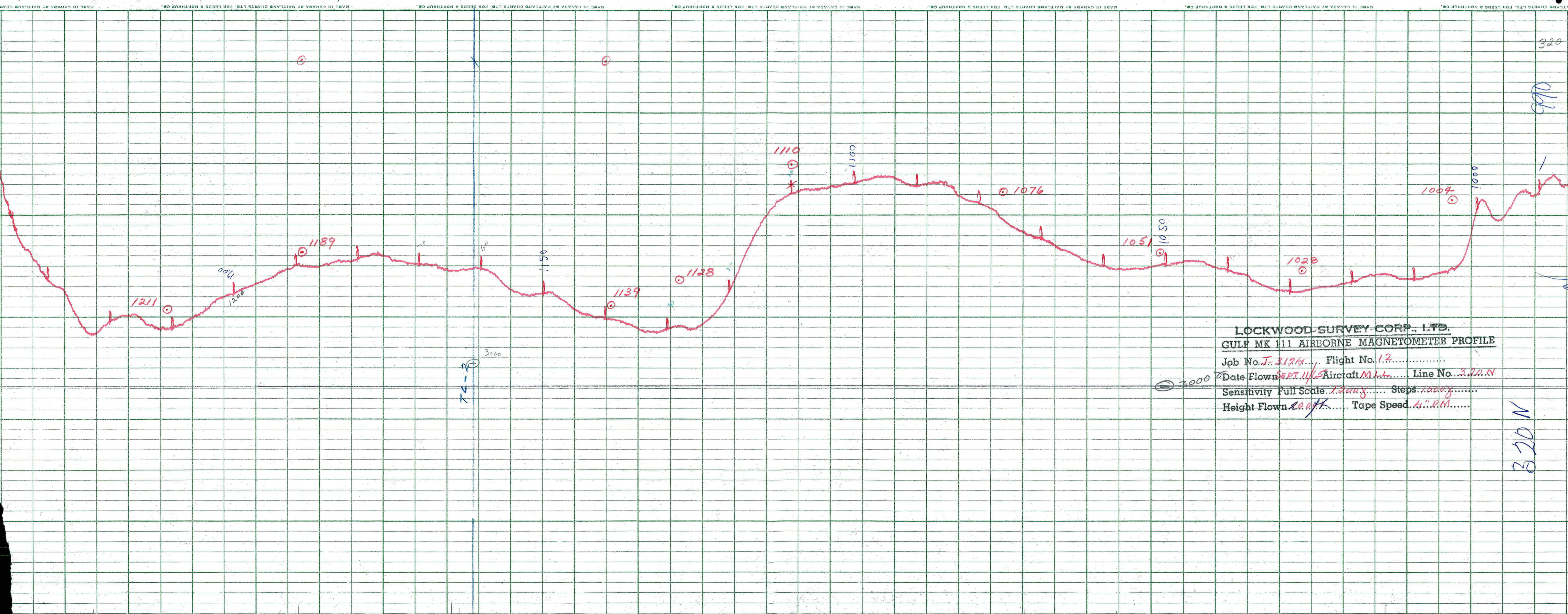
Sensitivity Full Scale 1200 γ Steps 1000 γ

Height Flown 10000' Tape Speed 4" PM

3000

3000





LOCKWOOD SURVEY CORP., LTD.
GULF MK 111 AIRBORNE MAGNETOMETER PROFILE
 Job No. J-3174 Flight No. 12
 Date Flown SEPT. 11/55 Aircraft M.L.L. Line No. 320-N
 Sensitivity Full Scale 1.200g Steps 1.000g
 Height Flown 20,000 ft Tape Speed 4" P.M.

74-30

320 N

320

990

1000

3000

1200

1211

1189

1150

1139

1128

1110

1100

1076

1051

1050

1028

1004

1000