

LOCKWOOD SURVEY CORPORATION LIMITED

CONTRACT # G-3174
FLIGHT # 17
DATE FLOWN SEPT 23/65
AIRCRAFT MLL
FLYING HEIGHT 200'

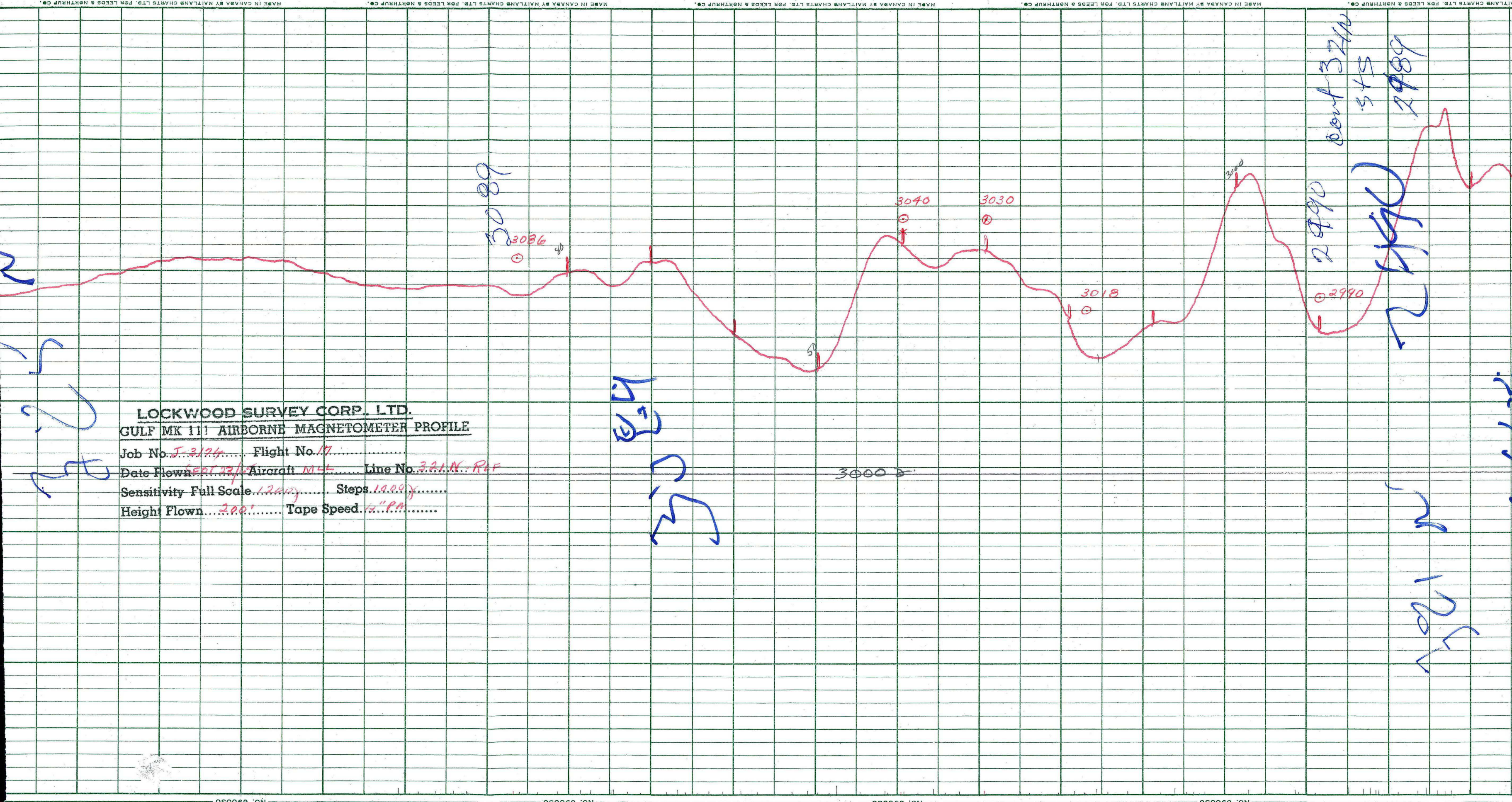
PROFILES
GULF MAGNETOMETER Mk III 4 1/4 /MINUTE
SENSITIVITY 12008
APN-1 RADIO ALTIMETER /MINUTE
SENSITIVITY

LINE No. 321N-REF

017164

LOCKWOOD SURVEY CORP., LTD.
ELECTROMAGNETOMETER PROFILES.

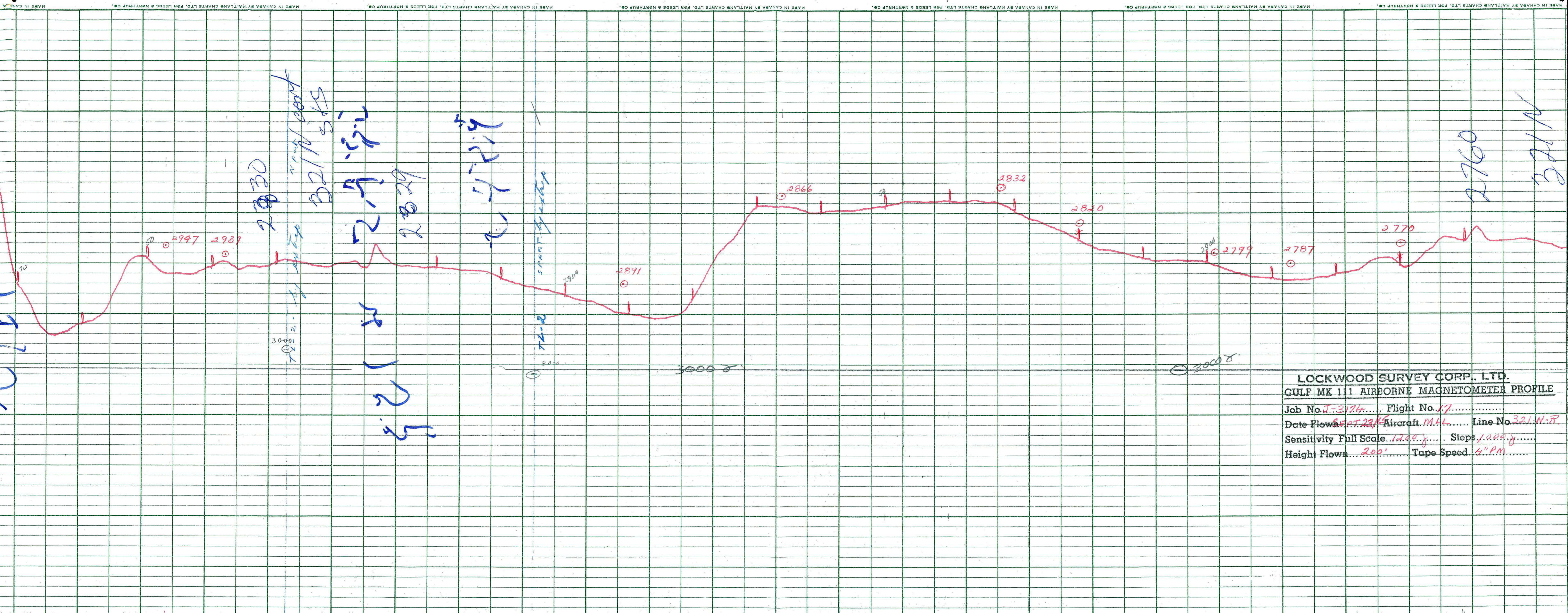
Job No..... Flight No.....
Date Flown..... Aircraft..... Line No.....
Sensitivity, In Phase..... Out of Phase.....
Flying Height..... Bird Height.....
Tape Speed.....



LOCKWOOD SURVEY CORP., LTD.
GULF MK 111 AIRBORNE MAGNETOMETER PROFILE
 Job No. *J-3194* Flight No. *17*
 Date Flown *SEPT 23/54* Aircraft *M4* Line No. *321X-REF*
 Sensitivity Full Scale *1200γ* Steps *1200γ*
 Height Flown *200'* Tape Speed *1/2" PA*

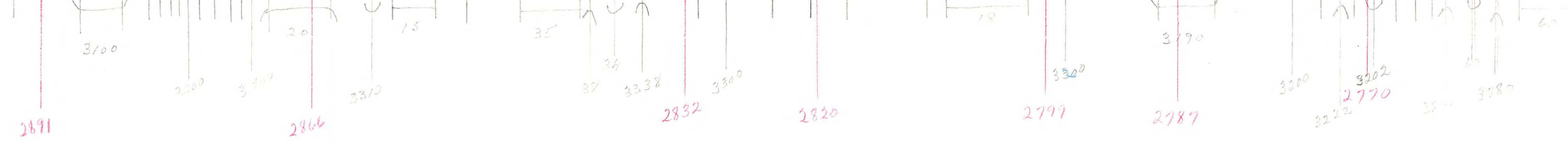
H
 3000
 3000
 2990
 2989

2990
 2989
 2989
 2989



LOCKWOOD SURVEY CORP., LTD.
GULF MK 111 AIRBORNE MAGNETOMETER PROFILE
 Job No. J-3174..... Flight No. 17.....
 Date Flown SEPT 23/45 Aircraft MAL..... Line No. 321 N-R
 Sensitivity Full Scale 1200 γ..... Steps 1000 γ.....
 Height Flown 200'..... Tape Speed 4" PM.....

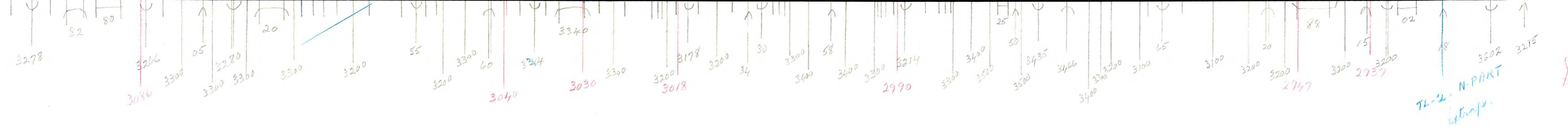
TL-2
(S part, extra)



G-3174
T-321 N-R.
SEPT 23/5
FLT 17.

J.B.

G-3174
T 321 N-R
SEPT 23/65
FLT 17



TL-2 N-PART
extra

S & S

LOCKWOOD ST. 2500 G. LTD.
ELECTROMAGNETOMETER PROFILES.

Job No. J 2174 Flight No. 17
Date Flown SEPT. 23/45 Aircraft MLA Line No. 321 JEP
Sensitivity, In Phase 94.755 Out of Phase 94.755
Flying Height 200' Bird Height 150'
Tape Speed 3" KM

