

LOCKWOOD SURVEY CORPORATION LIMITED

CONTRACT # G-3174
FLIGHT # 17-12
DATE FLOWN SEPT. 11-23/65
AIRCRAFT M.L.L.
FLYING HEIGHT 2001

PROFILES
GULF MAGNETOMETER Mk III 4" /MINUTE
SENSITIVITY 1200
APN-1 RADIO ALTIMETER...../MINUTE
SENSITIVITY.....

LINE No. 323-S RE
323 S

017166

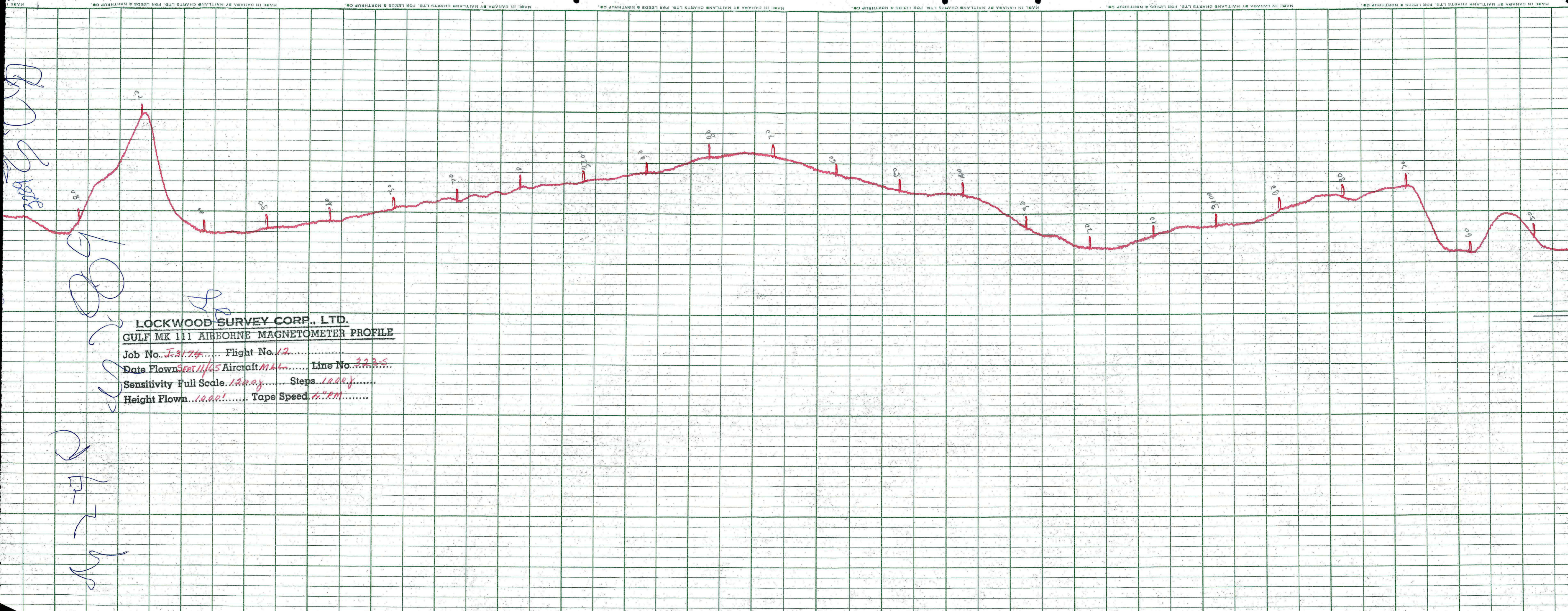
LOCKWOOD SURVEY CORP., LTD.
ELECTROMAGNETOMETER PROFILES.

Job No..... Flight No.....
Date Flown..... Aircraft..... Line No.....
Sensitivity, In Phase..... Out of Phase.....
Flying Height..... Bird Height.....
Tape Speed.....

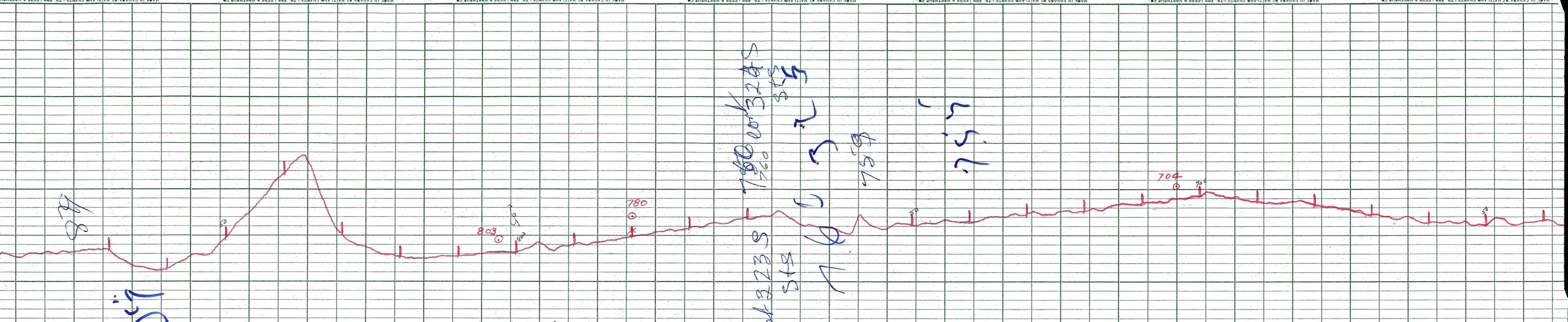
Dr. J. S. [unclear]

1000

1000



LOCKWOOD SURVEY CORP., LTD.
 GULF MK 111 AIRBORNE MAGNETOMETER PROFILE
 Job No. J-3174 Flight No. 12
 Date Flown SEPT 11/65 Aircraft MAL Line No. 323-5
 Sensitivity Full Scale 1000γ Steps 1000γ
 Height Flown 1000' Tape Speed 4" PM



LOCKWOOD SURVEY CORP., LTD.
GULF MK 111 AIRBORNE MAGNETOMETER PROFILE

Job No. J-2174 Flight No. 17
 Date Flown APR 23/6 Aircraft M.111 Line No. 3235 REF
 Sensitivity Full Scale 1200 γ Steps 1200 γ
 Height Flown 1000' Tape Speed 4" PA

750
 760
 750
 750
 STS
 STS
 STS
 STS

88

750

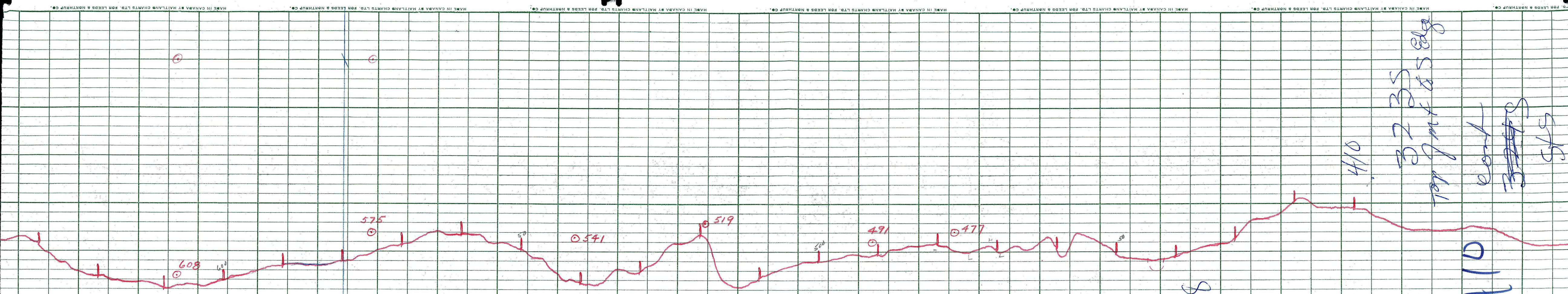
803

780

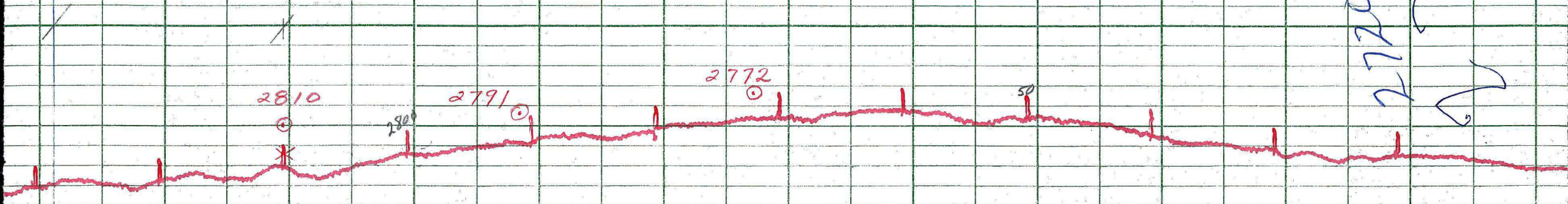
704

3000

3000



LOCKWOOD SURVEY CORP., LTD.
GULF MK 111 AIRBORNE MAGNETOMETER PROFILE
 Job No. J-3174 Flight No. 17
 Date flown APT. 23/6 Aircraft M.L.L. Line No. 323-5 REF.
 Sensitivity Full Scale 1200 γ Steps 1000
 Height flown 2001 Tape Speed 4" PM



3000

3000

1-7-1

LOCKWOOD SURVEY CORP., LTD.
 GULF MK III AIRBORNE MAGNETOMETER PROFILE
 Job No. 5-3174 Flight No. 12
 Date Flown SEP 7 11/68 Aircraft AN-12 Line No. 323-5
 Sensitivity Full Scale 1.200γ Steps 1000γ
 Height Flown 200 ft Tape Speed 4" PM

2770
 2720
 235

MADE IN U.S.A.

ESTERLINE ANGUS

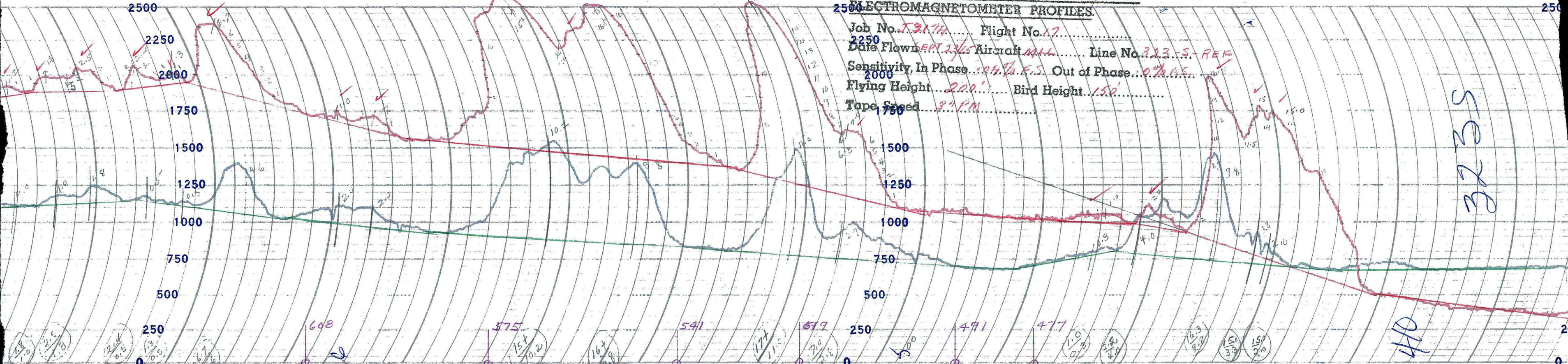
INDIANAPOLIS, IND., U.S.A.

✓ E.S.

LOCKWOOD SURVEY CORP., LTD.

ELECTROMAGNETOMETER PROFILES.

Job No. J. 3174 Flight No. 17
 Date Flown SEPT. 23/45 Aircraft MAL Line No. 323-S-REF
 Sensitivity, In Phase 0.24% F.S. Out of Phase 0% F.S.
 Flying Height 200' Bird Height 150'
 Tape Speed 34 PM



323S

410

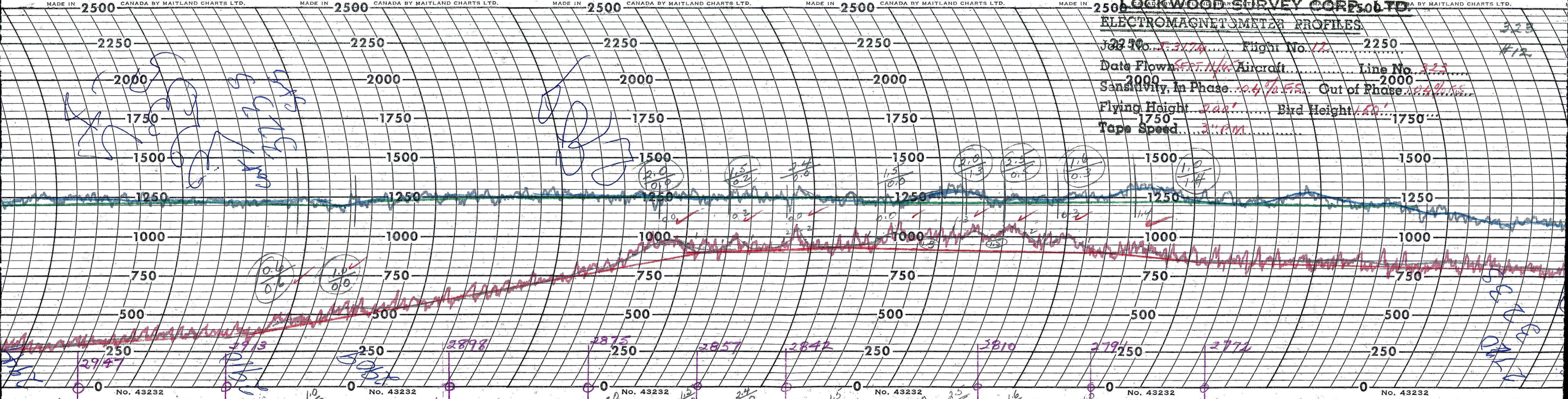
190

LOCKWOOD SURVEY CORP. LTD.

ELECTROMAGNETOMETER PROFILES

323
#12

J2250...
 Date Flown...
 Sensitivity, In Phase...
 Flying Height...
 Tape Speed...



Handwritten blue notes:
S...
C...
T...

Handwritten blue notes:
S...
C...
T...

Handwritten blue notes:
S...
C...
T...

No. 43232

No. 43232

No. 43232

No. 43232

No. 43232

No. 43232

1.0/0.0

2.0/0.0

1.5/0.0

1.0/1.4

2947

2913

2898

2875

2857

2842

2810

2791

2771

1.0/0.0

2.0/0.0

1.5/0.0

1.0/1.4

2947

2913

2898

2875

2857

2842

2810

2791

2771

1.0/0.0

2.0/0.0

1.5/0.0

1.0/1.4

2947

2913

2898

2875

2857

2842

2810

2791

2771

1.0/0.0

2.0/0.0

1.5/0.0

1.0/1.4

2947

2913

2898

2875

2857

2842

2810

2791

2771

1.0/0.0

2.0/0.0

1.5/0.0

1.0/1.4

2947

2913

2898

2875

2857

2842

2810

2791

2771

1.0/0.0

2.0/0.0

1.5/0.0

1.0/1.4

2947

2913

2898

2875

2857

2842

2810

2791

2771

1.0/0.0

2.0/0.0

1.5/0.0

1.0/1.4

2947

2913

2898

2875

2857

2842

2810

2791

2771

1.0/0.0

2.0/0.0

1.5/0.0

1.0/1.4

2947

2913

2898

2875

2857

2842

2810

2791

2771

1.0/0.0

2.0/0.0

1.5/0.0

1.0/1.4

2947

2913

2898

2875

2857

2842

2810

2791

2771

1.0/0.0

2.0/0.0

1.5/0.0

1.0/1.4

2947

2913

2898

2875

2857

2842

2810

2791

2771

1.0/0.0

2.0/0.0

1.5/0.0

1.0/1.4

2947

2913

2898

2875

2857

2842

2810

2791

2771

1.0/0.0

2.0/0.0

1.5/0.0

1.0/1.4

2947

2913

2898

2875

2857

2842

2810

2791

2771

1.0/0.0

2.0/0.0

1.5/0.0

1.0/1.4

2947

2913

2898

2875

2857

2842

2810

2791

2771

1.0/0.0

2.0/0.0

1.5/0.0

1.0/1.4

2947

2913

2898

2875

2857

2842

2810

2791

2771

1.0/0.0

2.0/0.0

1.5/0.0

1.0/1.4

2947

2913

2898

2875

2857

2842

2810

2791

2771

1.0/0.0

2.0/0.0

1.5/0.0

1.0/1.4

2947

2913

2898

2875

2857

2842

2810

2791

2771

1.0/0.0

2.0/0.0

1.5/0.0

1.0/1.4

2947

2913

2898

2875

2857

2842

2810

2791

2771

1.0/0.0

2.0/0.0

1.5/0.0

1.0/1.4

2947

2913

2898

2875

2857

2842

2810

2791

2771

1.0/0.0

2.0/0.0

1.5/0.0

1.0/1.4

2947

2913

2898

2875

2857

2842

2810

2791

2771

1.0/0.0

2.0/0.0

1.5/0.0

1.0/1.4

2947

2913

2898

2875

2857

2842

2810

2791

2771

1.0/0.0

2.0/0.0

1.5/0.0

1.0/1.4

2947

2913

2898

2875

2857

2842

2810

2791

2771

1.0/0.0

2.0/0.0

1.5/0.0

1.0/1.4

2947

2913

2898

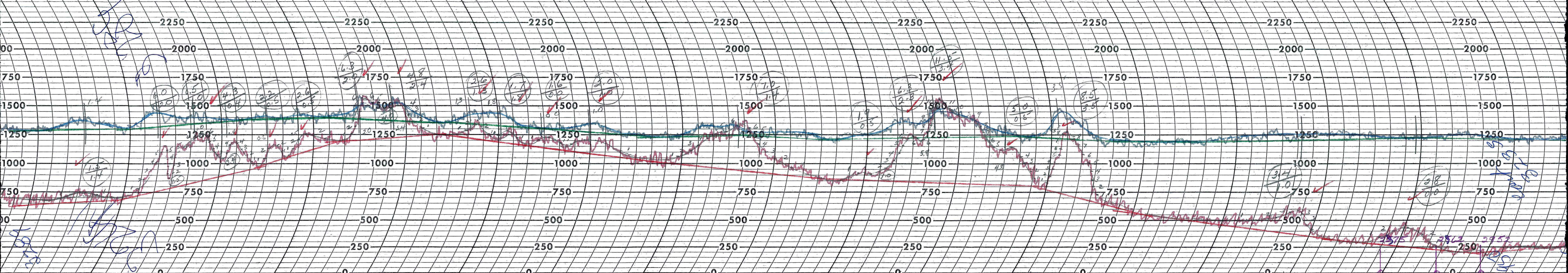
2875

2857

2842

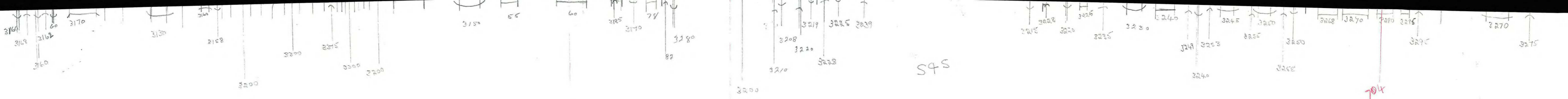
2810

2791



G-3174
F-17
SEPT. 23/65
L. 323. S REF

HC



G-3174

F 17

SEPT. 23/65

L 323-S

REF

323
Inter

3200

3178

3190
3185

3200

3240

3220
3228
3225
3250
3232

2975
3300

3313
3300

2962

3348
3300

2952

3270
3275
60
52

2947

3240

3278

2913

3228

3235

3220
3227

2898

3223
3207

3270

2875

3268

2857

3252
3260

2842

3235

3248

45