

**LOCKWOOD SURVEY CORPORATION LIMITED**

CONTRACT # 3174  
FLIGHT # 17  
DATE FLOWN SEPT-23-65  
AIRCRAFT CP-MLL  
FLYING HEIGHT 200'

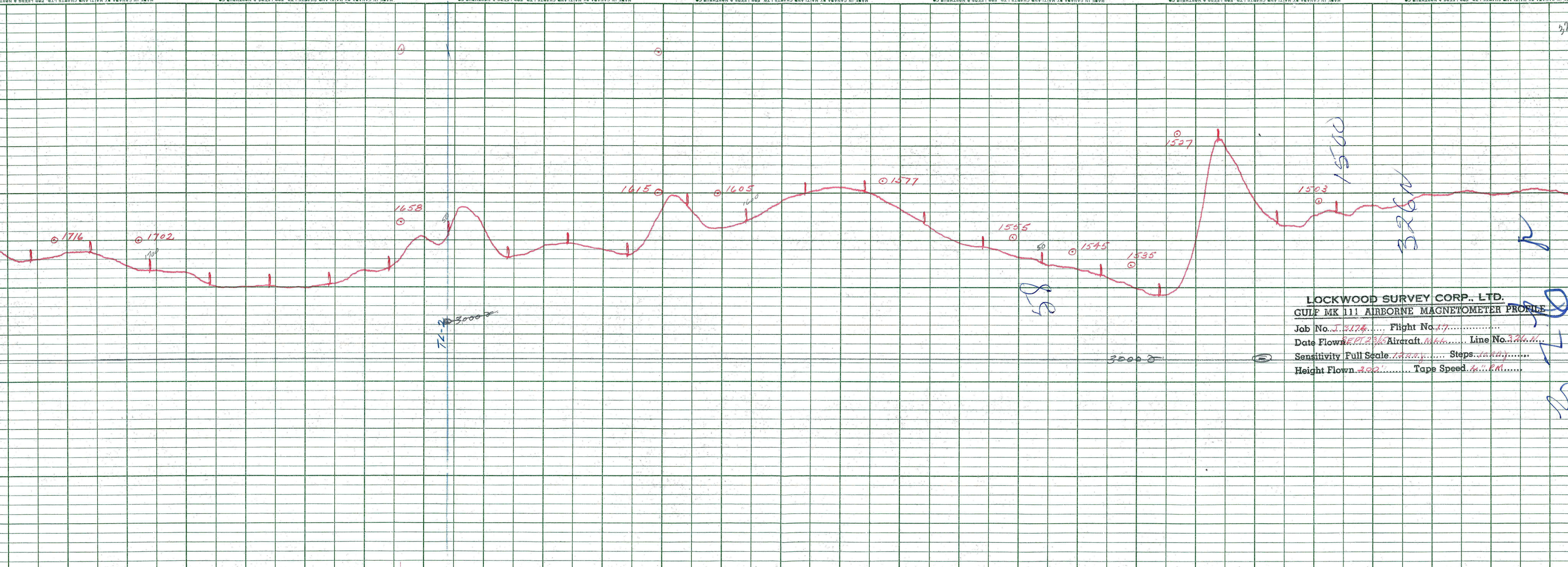
PROFILES  
GULF MAGNETOMETER Mk III 4 /MINUTE  
SENSITIVITY 1200γ  
APN-1 RADIO ALTIMETER /MINUTE  
SENSITIVITY

LINE No. 326-N. REF.

017169

**LOCKWOOD SURVEY CORP., LTD.**  
**ELECTROMAGNETOMETER PROFILES.**

Job No..... Flight No.....  
Date Flown..... Aircraft..... Line No.....  
Sensitivity, In Phase..... Out of Phase.....  
Flying Height..... Bird Height.....  
Tape Speed.....



**LOCKWOOD SURVEY CORP., LTD.**

**GULF MK 111 AIRBORNE MAGNETOMETER PROFILE**

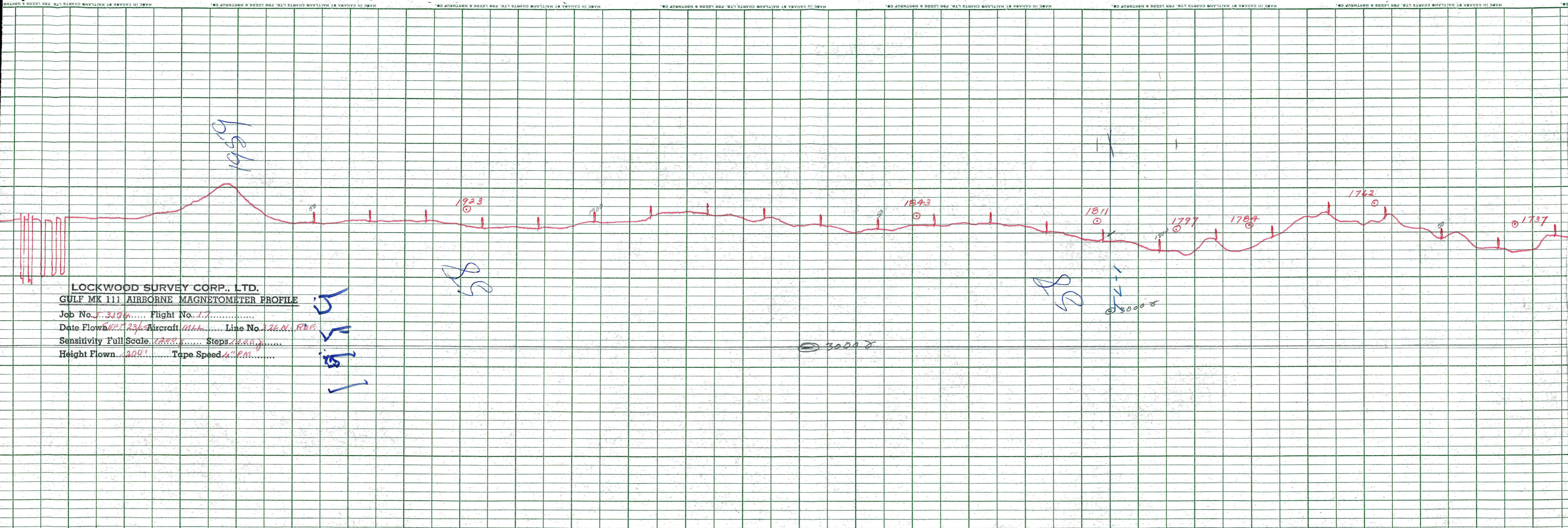
Job No. J. 3174..... Flight No. 117.....  
 Date Flown SEPT 23/55 Aircraft M.H...... Line No. 326N.....  
 Sensitivity Full Scale 1000 γ..... Steps 100 γ.....  
 Height Flown 300'..... Tape Speed 4" P.M......

3000  
 72-2

50  
 85

1550

326N



**LOCKWOOD SURVEY CORP., LTD.**

**GULF MK 111 AIRBORNE MAGNETOMETER PROFILE**

Job No. J-3174 Flight No. 17  
 Date Flown SEPT 23/65 Aircraft M11 Line No. 326 N REF  
 Sensitivity Full Scale 1200 γ Steps 1000 γ  
 Height Flown 200' Tape Speed 4" PM

6561

1923

1900

1843

1811

1797

1784

1762

1737

1917

SS

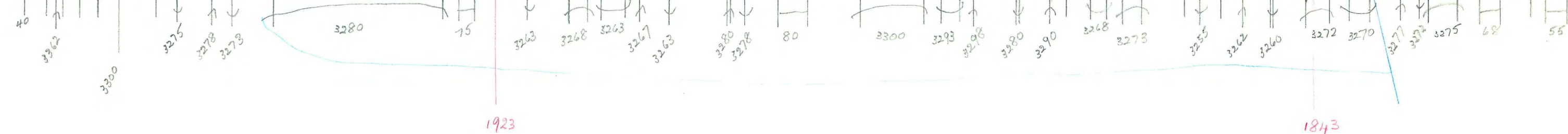
SS

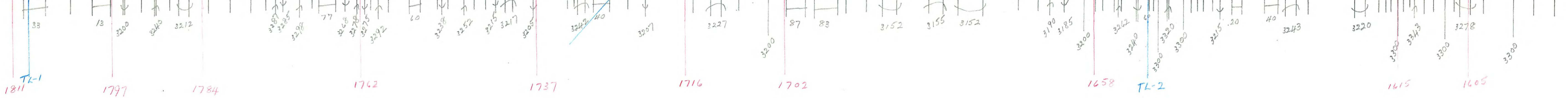
3000 γ

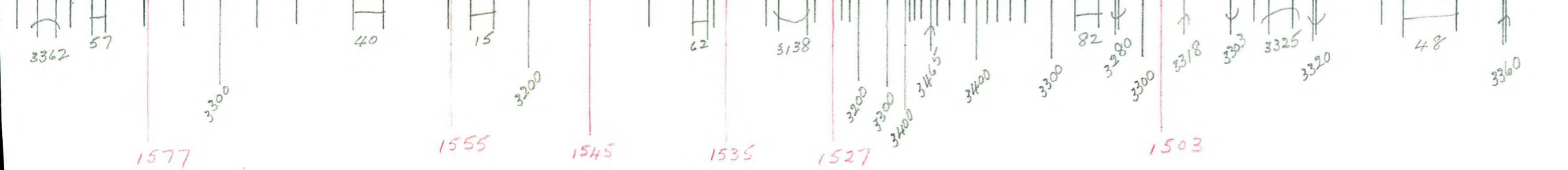
3000 γ

G-3174  
T-326-N. REF.  
SEPT.-23-65  
C.F-MLL  
FLIGHT-17

at K.







G-3174  
 T-326-N  
 SEPT-23-65  
 CR-MLL  
 FLIGHT-17

U.B.

2500  
LOCKWOOD SURVEY CORP., LTD.

ELECTROMAGNETIC PROFILES

Job No. J-3174 Flight No. 17

Date Flown 2000-2-25 Aircraft M.L. Line No. 336 N. REF.

Sensitivity In Phase .04% F.S. Out of Phase .01% F.S.

Flying Height 1750' Bird Height 150'

Tape Speed 3" P.M.

2500

2250

2000

1750

1500

1250

1000

750

500

250

2500

2250

2000

1750

1500

1250

1000

750

500

250

2500

2250

2000

1750

1500

1250

1000

750

500

250

LOCKWOOD SURVEY CORP., LTD.

ELECTROMAGNETIC PROFILES

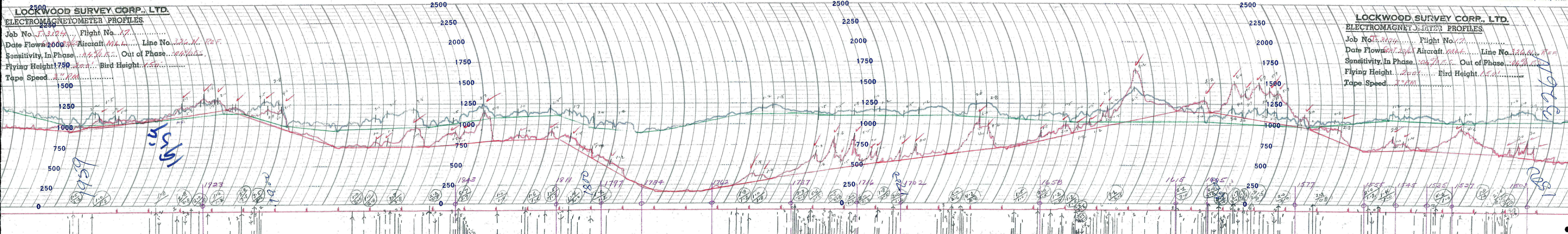
Job No. J-3174 Flight No. 17

Date Flown 2000-2-25 Aircraft M.L. Line No. 336 N. REF.

Sensitivity In Phase .04% F.S. Out of Phase .01% F.S.

Flying Height 1750' Bird Height 150'

Tape Speed 3" P.M.



high

low