

**LOCKWOOD SURVEY CORPORATION LIMITED**

CONTRACT # C 3174  
FLIGHT # #17  
DATE FLOWN Sept 23/65  
AIRCRAFT MLL  
FLYING HEIGHT 200

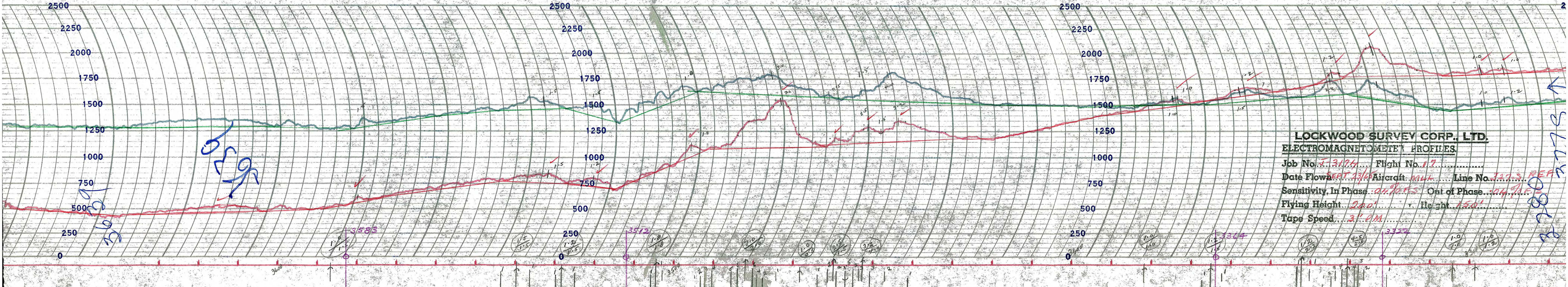
PROFILES  
GULF MAGNETOMETER Mk III 4/MINUTE  
SENSITIVITY 1200  
APN-1 RADIO ALTIMETER \_\_\_\_\_/MINUTE  
SENSITIVITY \_\_\_\_\_

327-N REF  
327-S REF  
LINE No. ....

017170

**LOCKWOOD SURVEY CORP., LTD.**  
**ELECTROMAGNETOMETER PROFILES.**

Job No..... Flight No.....  
Date Flown..... Aircraft..... Line No.....  
Sensitivity, In Phase..... Out of Phase.....  
Flying Height..... Bird Height.....  
Tape Speed.....

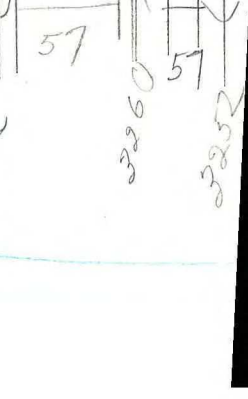
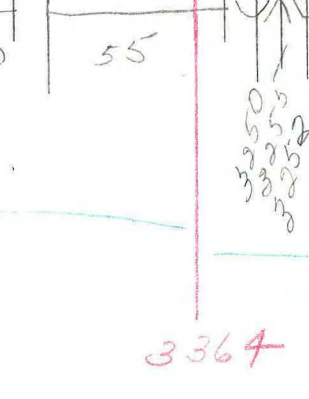
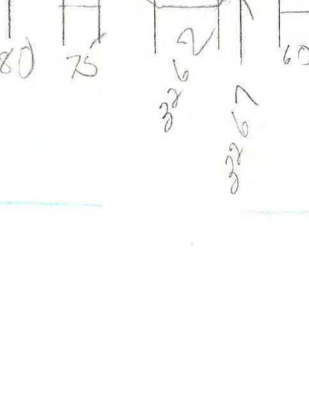
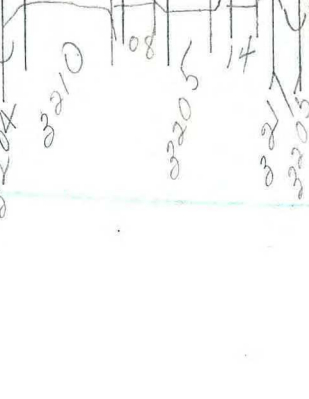
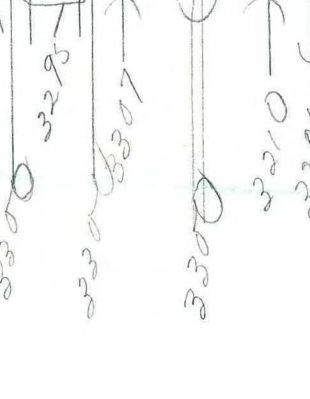
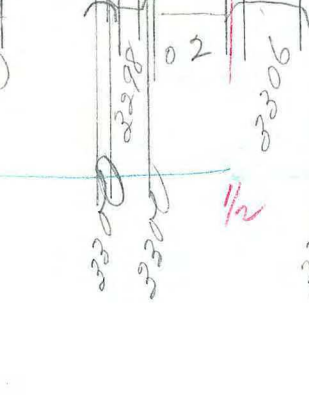
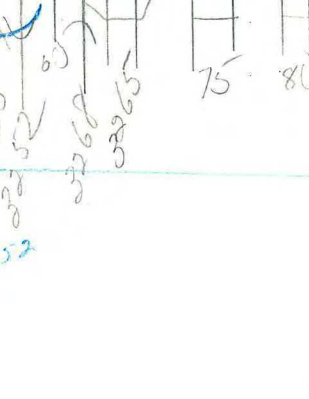
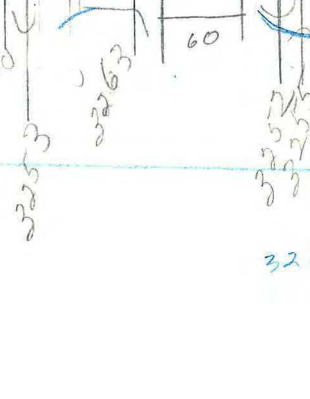
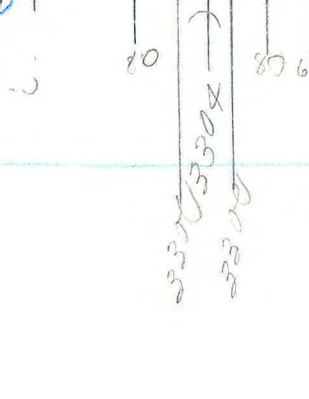
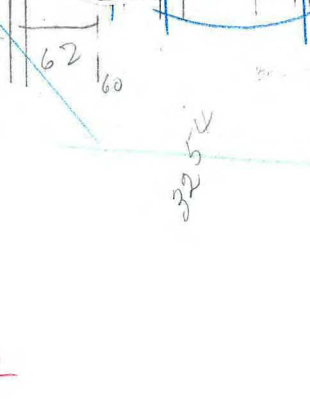
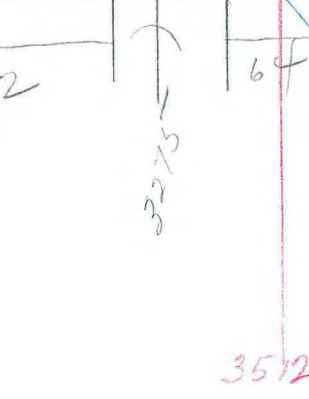
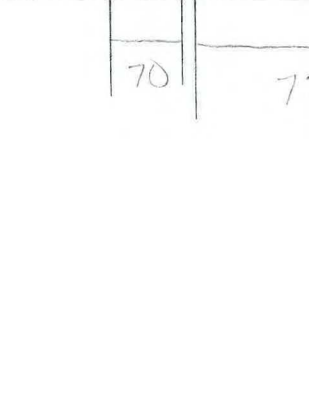
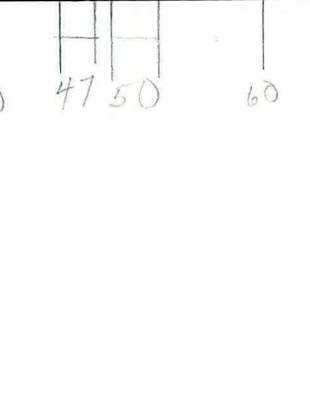
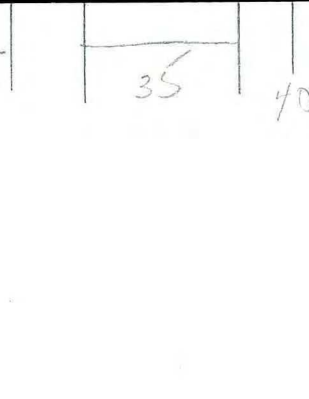
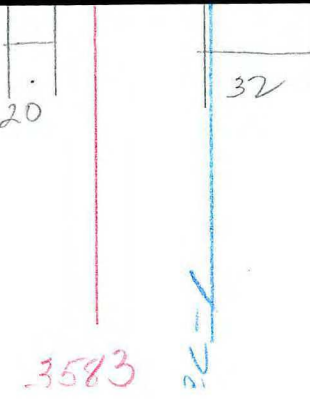
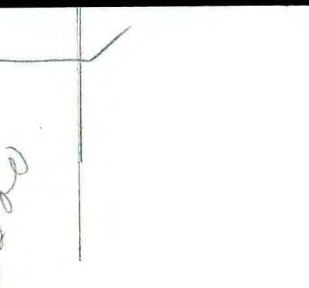
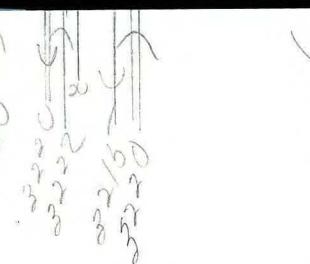


**LOCKWOOD SURVEY CORP., LTD.**  
**ELECTROMAGNETOMETER PROFILES.**  
 Job No. *J. 3174* Flight No. *17*  
 Date flown *SEPT 23/45* Aircraft *MALH* Line No. *727.S. REF*  
 Sensitivity, In Phase *0.4 dots* Out of Phase *0.4 dots*  
 Flying Height *200'* Height *150'*  
 Tape Speed *3' P.M.*

2700  
 2800  
 2900  
 3000  
 3100  
 3200  
 3300  
 3400  
 3500  
 3600  
 3700  
 3800  
 3900  
 4000  
 4100  
 4200  
 4300  
 4400  
 4500  
 4600  
 4700  
 4800  
 4900  
 5000  
 5100  
 5200  
 5300  
 5400  
 5500  
 5600  
 5700  
 5800  
 5900  
 6000  
 6100  
 6200  
 6300  
 6400  
 6500  
 6600  
 6700  
 6800  
 6900  
 7000  
 7100  
 7200  
 7300  
 7400  
 7500  
 7600  
 7700  
 7800  
 7900  
 8000  
 8100  
 8200  
 8300  
 8400  
 8500  
 8600  
 8700  
 8800  
 8900  
 9000  
 9100  
 9200  
 9300  
 9400  
 9500  
 9600  
 9700  
 9800  
 9900  
 10000

G 3174 MLL  
Sept 23/65  
FLT #17

REF-327  
2C



1169

1169

1080  
Cont 327N  
SFB  
DEO

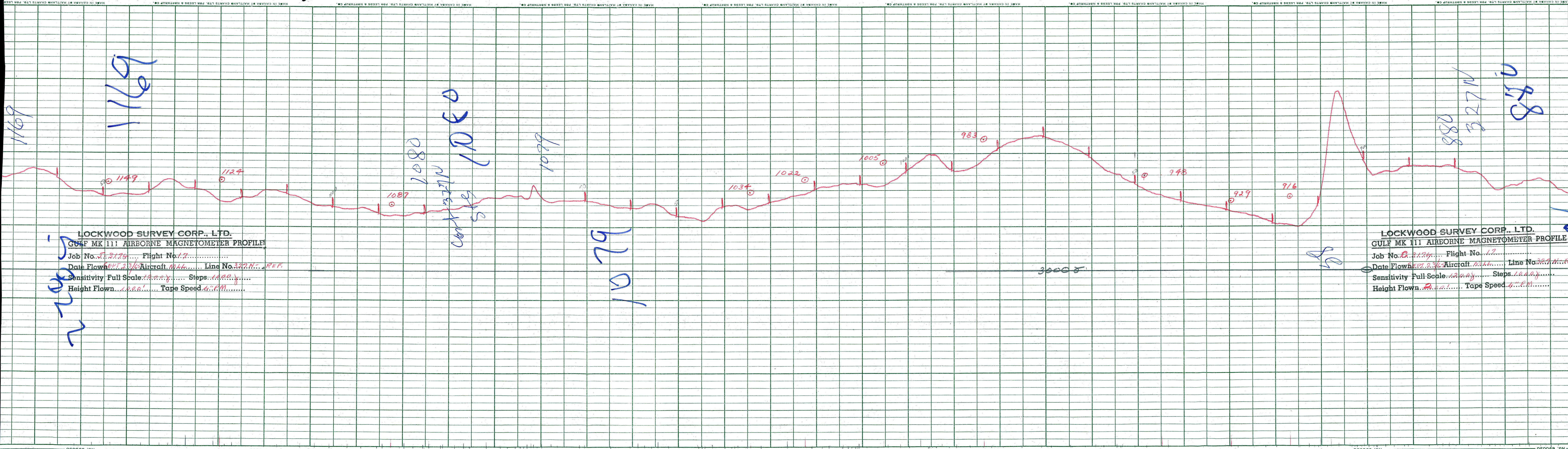
1079

1079

1080  
327N  
870

LOCKWOOD SURVEY CORP., LTD.  
 GULF MK 111 AIRBORNE MAGNETOMETER PROFILE  
 Job No. J-3174 Flight No. 17  
 Date Flown SEP. 23/63 Aircraft M.A. Line No. 327N REF.  
 Sensitivity Full Scale 1200γ Steps 1000γ  
 Height Flown 2000' Tape Speed 4"PM

LOCKWOOD SURVEY CORP., LTD.  
 GULF MK 111 AIRBORNE MAGNETOMETER PROFILE  
 Job No. J-3174 Flight No. 17  
 Date Flown SEP. 23/63 Aircraft M.A. Line No. 327N  
 Sensitivity Full Scale 1200γ Steps 1000γ  
 Height Flown 2000' Tape Speed 4"PM



MADE IN U.S.A.

ESTERLINE ANGUS

INDIANAPOLIS, IND., U.S.A.

E.S.

**LOCKWOOD SURVEY CORP., LTD.**  
**ELECTROMAGNETOMETER PROFILES**

Job No. J-3174 Flight No. 17 REF.  
Date Flown SEP. 25/61 Aircraft M1A1 Line No. 327-N  
Sensitivity, In Phase: 0.4% F.S. Out of Phase: 0.4% F.S.  
Flying Height: 200' Bird Height: 150'  
Tape Speed: 3" P.M.

