

**LOCKWOOD SURVEY CORPORATION LIMITED**

CONTRACT # Q 3174  
FLIGHT # 14  
DATE FLOWN Sept 14/65  
AIRCRAFT MLL  
FLYING HEIGHT 200

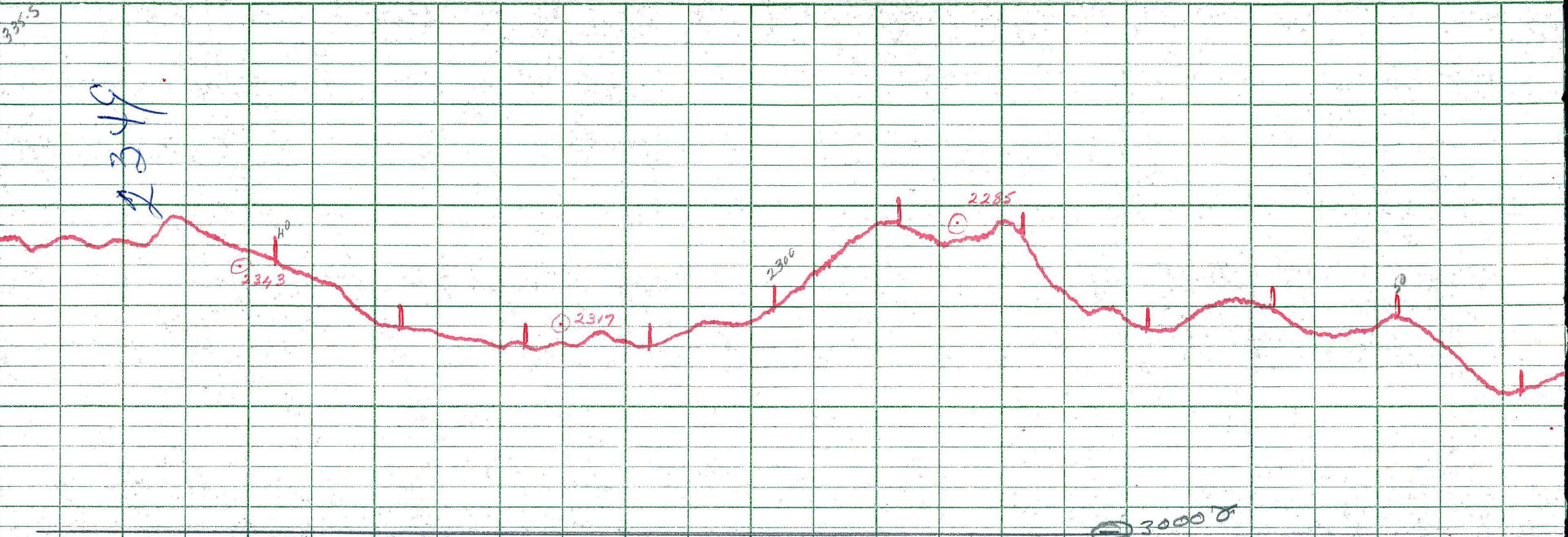
PROFILES  
GULF MAGNETOMETER Mk III 4 /MINUTE  
SENSITIVITY 1200  
APN-1 RADIO ALTIMETER \_\_\_\_\_ /MINUTE  
SENSITIVITY \_\_\_\_\_

LINE No. 335 (Ref)

017178

**LOCKWOOD SURVEY CORP., LTD.**  
**ELECTROMAGNETOMETER PROFILES.**

Job No..... Flight No.....  
Date Flown..... Aircraft..... Line No.....  
Sensitivity, In Phase..... Out of Phase.....  
Flying Height..... Bird Height.....  
Tape Speed.....



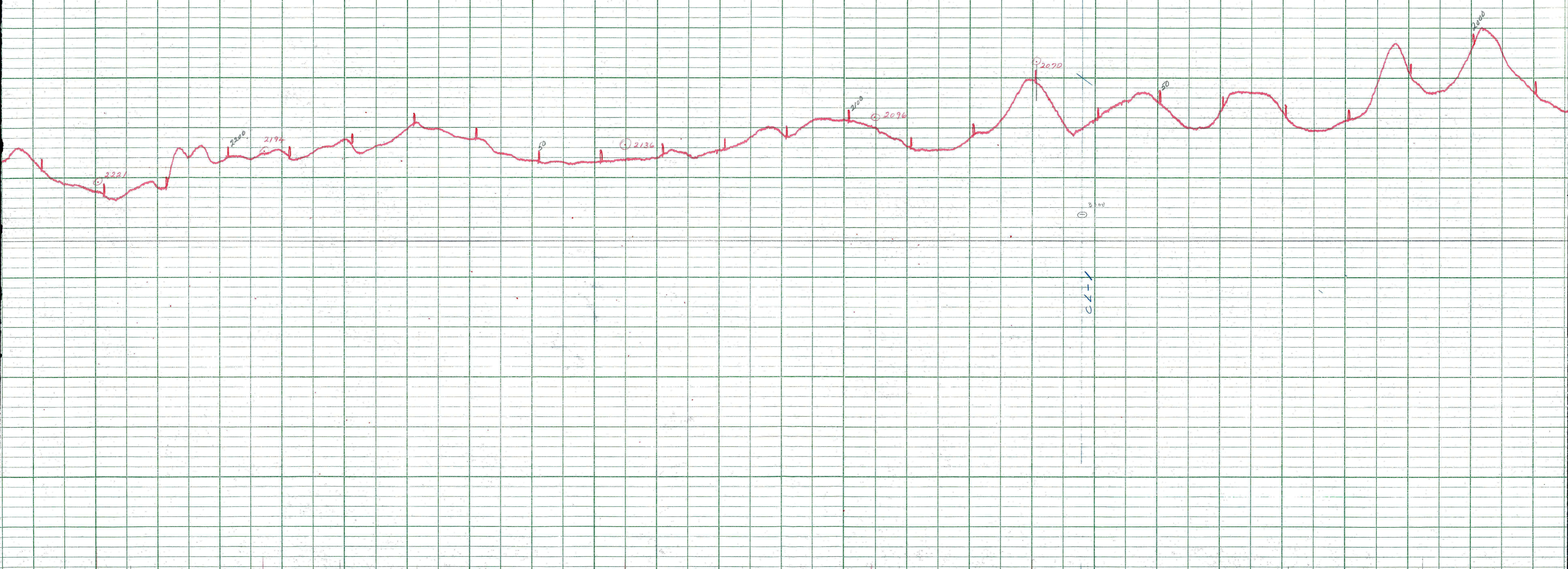
**LOCKWOOD SURVEY CORP. LTD.**  
**GULF MK 111 AIRBORNE MAGNETOMETER PROFILE**

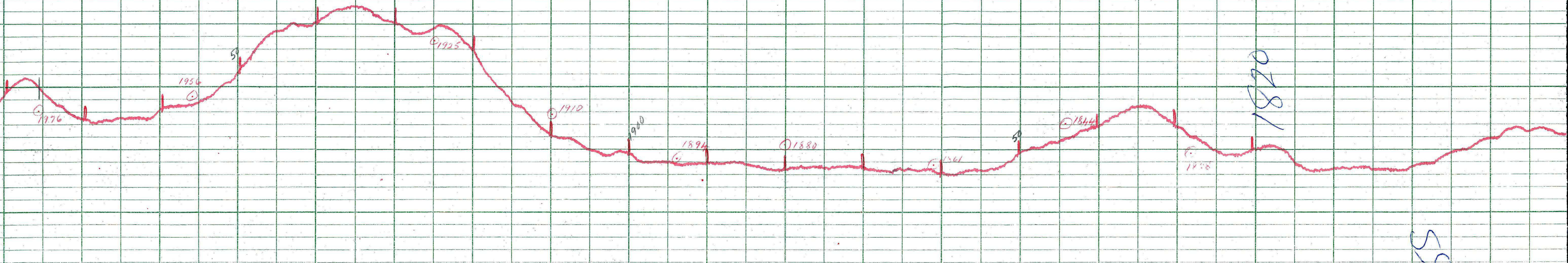
Job No. 9-3174 Flight No. 14  
 Date Flown SEPT. 15/65 Aircraft MLA Line No. 335-S (REF.)  
 Sensitivity Full Scale 1.200γ Steps 1.000γ  
 Height Flown 2,000' Tape Speed 4" P.M.

Sheet  
 2349

Profile

Profile



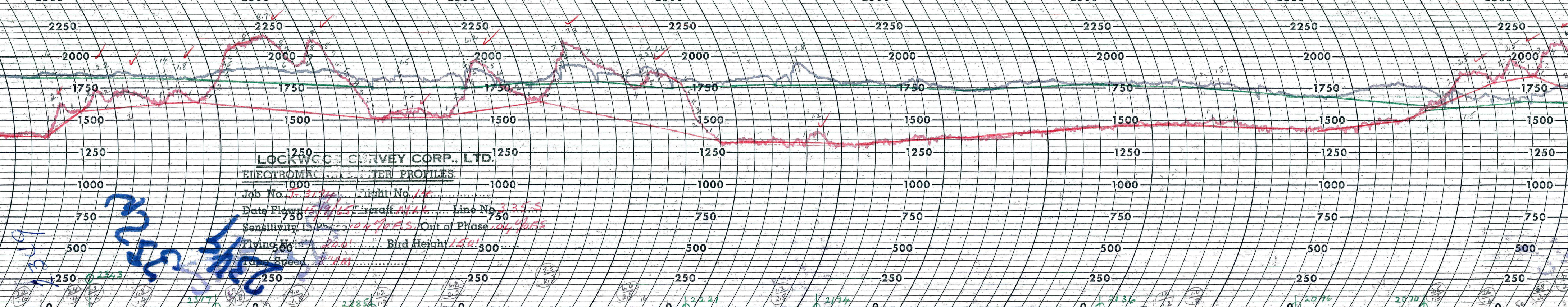


3000

**LOCKWOOD SURVEY CORP., LTD.**  
**GULF MK III AIRBORNE MAGNETOMETER PROFILE**  
 Job No. C-3174 Flight No. 14  
 Date Flown SEPT 15/68 Aircraft MIL Line No. 3355 REF  
 Sensitivity Full Scale 1200 γ Steps 1000 γ  
 Height Flown 200' Tape Speed 4" PM

SS

SS  
 1820









Q 3174 - MLL

Sept 15/65 -

FLT # 14

335 - S/A<sup>2</sup>f)