

LOCKWOOD SURVEY CORPORATION LIMITED

CONTRACT # G-3174
FLIGHT # 14
DATE FLOWN Sept. 15/65
AIRCRAFT M.L.L.
FLYING HEIGHT 200'

PROFILES
GULF MAGNETOMETER Mk III 4" P/MINUTE
SENSITIVITY 1200 X
APN-1 RADIO ALTIMETER _____/MINUTE
SENSITIVITY _____

LINE No. 338-S-REF.

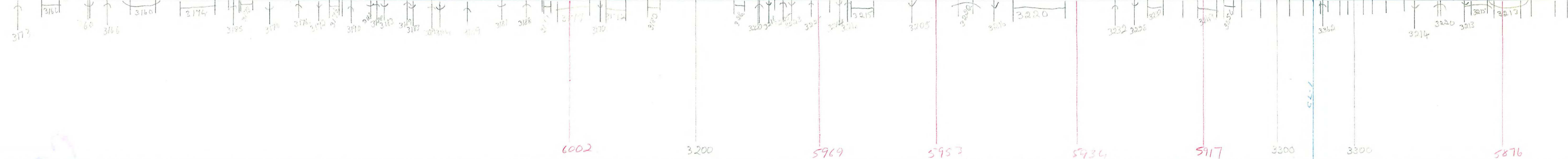
017181

LOCKWOOD SURVEY CORP., LTD.
ELECTROMAGNETOMETER PROFILES.

Job No..... Flight No.....
Date Flown..... Aircraft..... Line No.....
Sensitivity, In Phase..... Out of Phase.....
Flying Height..... Bird Height.....
Tape Speed.....

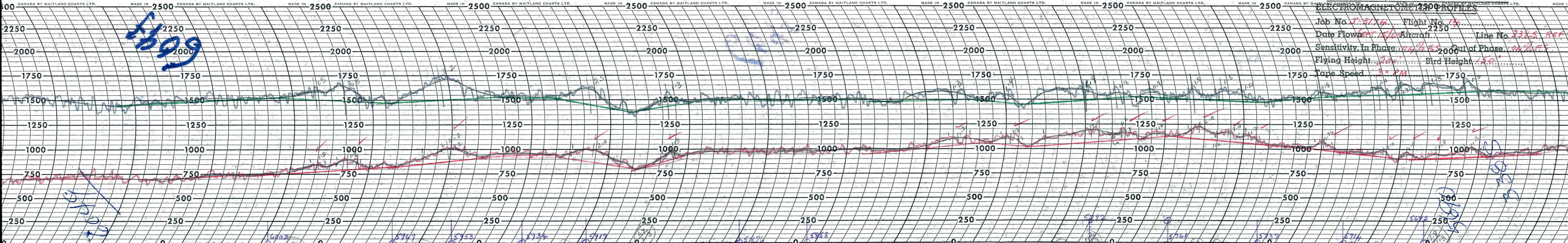
Job - G-3174
Flt - 14
Date - Sept 15/65
LN - 338-5-RCC

AT



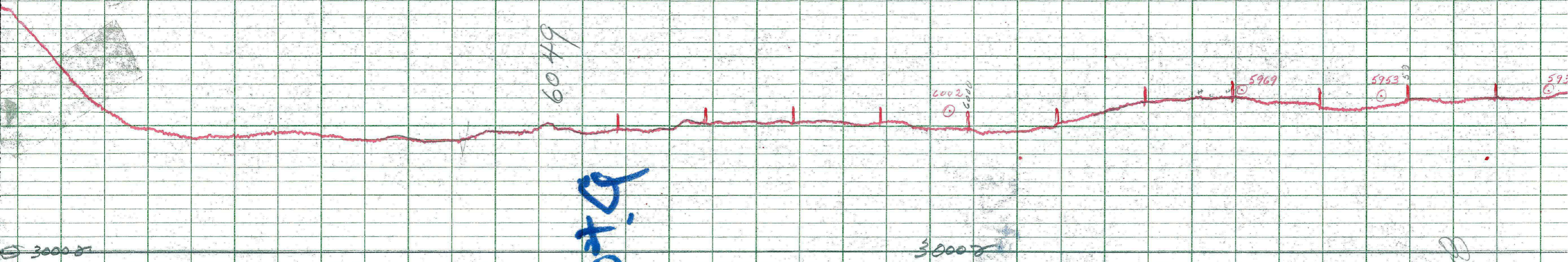
ELECTROMAGNETIC 2500 PROFILES

Job No. J-3174 Flight No. 14
Date Flown 6/15/65 Aircraft Line No. 338.5 REF
Sensitivity, In Phase .04% ES Out of Phase .06% ES
Flying Height 200' Bird Height 150'
Tape Speed 3" PM



No. 43232 No. 43232 No. 43232 No. 43232 No. 43232 No. 43232 No. 43232 No. 43232 No. 43232 No. 43232

6000 1/1.5 1/2.5 5947 5953 5934 5917 5874 5858 5761 5737 5714 5672



LOCKWOOD SURVEY CORP., LTD.
GULF MK 111 AIRBORNE MAGNETOMETER PROFILE

Job No. J-3174 Flight No. 1A
 Date Flown SEPT 15/65 Aircraft MLL Line No. 338-S REF
 Sensitivity Full Scale 1200γ Steps 1000γ
 Height Flown 2000' Tape Speed 1" PM

Handwritten notes:
 4/11/74
 3174
 15/165
 [Signature]

6049

W-19

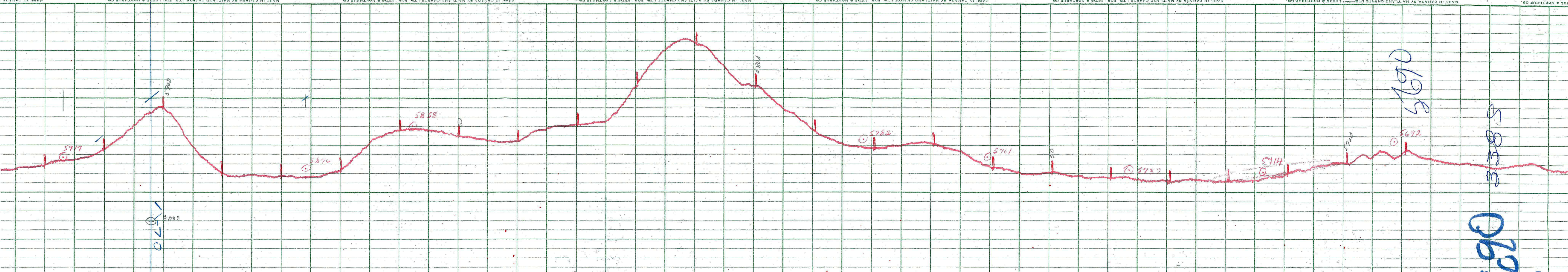
6002

3000

5969

5953

5930



LOCKWOOD SURVEY CORP., LTD.
GULF MK 111 AIRBORNE MAGNETOMETER PROFILE
 Job No. *J. 3124* Flight No. *14*
 Date Flown *SEP. 19/57* Aircraft *M11* Line No. *338-S-REF*
 Sensitivity Full Scale *1200* Steps *1200*
 Height Flown *1500'* Tape Speed *6" PM*